

# *Top selling lots from 2016 Sale*

*Thank you to all those clients attending our 2016 sale.*



## **PEAKES GABBA K556**

Top priced Angus Bull in 2016 sale, sold to Mountain Valley Angus Stud, Coolatai NSW for \$30,000.

## **PEAKES REALITY K697**

2nd top priced Angus bull in 2016, sold to Irelands Angus Stud, Wagga Wagga NSW for \$27,000.



## **PEAKES IN FOCUS K669**

3rd top price Angus bull in 2016 sale, sold to JJ & JM O'Brien, "Peri" Rocky Creek, NSW for \$18,000.

# ANGUS SIREs



**Milwillah Lad E158**

New Zealand outcross, excels in structure. The highest data performance New Zealand cross genetics we could source. Trait leader for EMA and Gestation length. Tremendous carcass and structural correctness.



**Milwillah In Focus B115**

Low Birth weight sire, excellent temperament. Daughters are top cows, deep bodied and easy doing. Good balanced EBV's.



**Tuwharetoa Regent D145**

In 2013 Peakes Angus purchased full live possession rights in Regent D145 from the Dunoon & TeMania Angus Studs. His first sons have sold to \$55,000. He is one of the breed's most popular sires with excellent data, high indexes. Semen has sold world wide.



**Kansas Evidently J81**

The best Evident son we could find in Australia, he is breeding progeny with superb carcass, ideal for the feedlot steer producer.



**Matauri Outlier F031**

One of the best bulls we have seen in New Zealand his progeny have excellent temperament. Trait leader for 200d to 600d & scrotal.



**Milwillah Elsom H283**

The top priced bull at the 2014 Milwillah bull sale sold for \$48,000. His pedigree combines three of the best females we have seen. He has impeccable structure & carcass.

## LOT 67

### PEAKES BOWEN REGENT L521 HBR EVTL521

24MTHS

Born: 15/08/2015

AMFU, NHFU, CAFU, DDFU, RDF

Tattoo: L521

RENNYLEA XPONENTIAL X555 (AI) (ET)  
 TE MANIA AMBASSADOR A134 (AI)  
 TE MANIA LOWAN Y211 (ACR) (AI)  
**SIRE: BNAD145 TUWHARETOA REGENT D145 (AI) (ET)**  
 YTHANBRAE HENRY VIII U8 (AI) (ET)  
 LAWSONS HENRY VIII Y5 (AI)  
 YTHANBRAE DIRECTION T270 (AI)

TE MANIA UNLIMITED U3271 (AI) (ET)  
 HIGHLANDER OF STERN AB (ET)  
 STERN 2664

**DAM: EVTG68 PEAKES ABIGAIL G68 (AI)**  
 MILWILLAH IN FOCUS B115 (AI)  
 PEAKES ABIGAIL E78  
 BOWEN ABIGAIL B13



#### MID-MAY 2017 ANGUS AUSTRALIA BREEDPLAN

CED	CEM	GL	BW	200d	400d	600d	Mcw	Milk	SS	CWT	EMA	Rib	Rump	RBV	IMF	SELECTION INDEXES			
-2.4	-4.8	-4.2	+6.4	+49	+88	+124	+123	+16	+1.9	+75	+4.9	+0.4	+0.5	-0.9	+2.9	ABI	Dom.	Grain	Grass
58%	55%	65%	74%	70%	70%	69%	67%	61%	59%	64%	64%	64%	65%	62%	61%	+\$121	+\$99	+\$139	+\$112

Traits Observed: CE,BWT,200WT,400WT,FAT,EMA,IMF

**Notes:** A beautiful profile on this Regent son, soft easy doing type. K534 full brother sold in the 2016 Bowen Bull Sale.

**EBV's rated within the breed top 5% 600d & Carc.wt, top 10% mat.cow wt, & IMF, top 15% 200, 400d & H.Grain Index.**

Purchaser: ..... \$ .....

## LOT 68

### PEAKES BOWEN REGENT L611 HBR EVTL611

24MTHS

Born: 18/07/2015

AMFU, NHFU, CAF, DDFU, RDF

Tattoo: L611

RENNYLEA XPONENTIAL X555 (AI) (ET)  
 TE MANIA AMBASSADOR A134 (AI)  
 TE MANIA LOWAN Y211 (ACR) (AI)  
**SIRE: BNAD145 TUWHARETOA REGENT D145 (AI) (ET)**  
 YTHANBRAE HENRY VIII U8 (AI) (ET)  
 LAWSONS HENRY VIII Y5 (AI)  
 YTHANBRAE DIRECTION T270 (AI)

MYTTY IN FOCUS  
 MILWILLAH IN FOCUS B115 (AI)  
 MILWILLAH BARUNAH Z18 (AI)  
**DAM: EVTE63 PEAKES NUMERAL E63**  
 DSK HU X-TRA STRENGTH X4 (AI) (ET)  
 PEAKES NUMERAL C30  
 BOWEN NUMERAL T11 (AI)



#### MID-MAY 2017 ANGUS AUSTRALIA BREEDPLAN

CED	CEM	GL	BW	200d	400d	600d	Mcw	Milk	SS	CWT	EMA	Rib	Rump	RBV	IMF	SELECTION INDEXES			
-2.2	-3.7	-2.8	+6.2	+52	+90	+125	+119	+16	+1.9	+79	+5.6	+0.6	-0.6	-0.8	+3.0	ABI	Dom.	Grain	Grass
56%	54%	60%	73%	69%	70%	68%	67%	61%	59%	63%	62%	62%	63%	60%	59%	+\$119	+\$101	+\$136	+\$111

Traits Observed: CE,BWT,200WT,400WT,FAT,EMA,IMF

**Notes:** Great type of young sire with doing ability, excellent volume & weight for age.

**EBV's rated within the breed top 1% carc.wt, top 5% 200d, 600d & mat. cow wt, top 10% 400d & IMF, top 25% Angus breeding & Heavy grain indexes.**

Purchaser: ..... \$ .....

**LOT 69**

**PEAKES BOWEN EDMUND L733 (AI) HBR EVTL733 25MTHS**  
 Born: 10/06/2015 AMFU, NHFU, CAFU, DDFU, Tattoo: L733

BOOROOMOOKA UNDERTAKEN U170 (AI)  
 BOOROOMOOKA UNDERTAKEN Y145  
 BOOROOMOOKA UAAISE U101 (AI)  
**SIRE: NORE11 RENNYLEA EDMUND E11 (AI) (ET)**  
 YTHANBRAE HENRY VIII U8 (AI) (ET)  
 LAWSONS HENRY VIII Y5 (AI)  
 YTHANBRAE DIRECTION T270 (AI)

BT EQUATOR 395M  
 MILLAH MURRAH EQUATOR D78 (AI)  
 MILLAH MURRAH RADO Y119 (AI)  
**DAM: EVTH543 PEAKES LULU H543 (AI)**  
 BT RIGHT TIME 24J  
 PEAKES LULU E32 (AI)  
 BOWEN LULU Z42 (AI)



**MID-MAY 2017 ANGUS AUSTRALIA BREEDPLAN**

CED	GEM	GL	BW	200d	400d	600d	Mcw	Milk	SS	CWT	EMA	Rib	Rump	RBV	IMF	SELECTION INDEXES			
+4.3	+2.6	-5.4	+1.4	+43	+85	+111	+94	+20	+2.0	+65	+5.5	+2.4	+2.0	-0.8	+2.3	ABI	Dom.	Grain	Grass
57%	52%	83%	74%	69%	70%	68%	65%	58%	59%	63%	63%	63%	64%	60%	59%	+\$133	+\$117	+\$142	+\$127

Traits Observed: GL, CE, BWT, 200WT, 400WT, FAT, EMA, IMF

**Notes:** Standout sire with incredible length, balance & sire appeal. Great spread of data.

**EBV's rated within the breed top 5% calving ease dtr, birth wt, rib, rump fat & heavy grass index, top 10% Angus breeding & Domestic indexes, top 15% Heavy grain & grass indexes, top 20% Gest. & Carc. wt, top 25% IMF.**

Purchaser: ..... \$ .....

**LOT 70**

**PEAKES BOWEN ELSOM L525 (AI) HBR EVTL525 23MTHS**  
 Born: 30/07/2015 AMFU, NHFU, CAFU, DDFU, RDF Tattoo: L525

ARDROSSAN EQUATOR A241 (AI) (ET)  
 MILWILLAH ELSOM F189 (AI)  
 MILWILLAH MOONGARA D123  
**SIRE: NJWH283 MILWILLAH ELSOM H283**  
 TE MANIA UNLIMITED U3271 (AI) (ET)  
 MILWILLAH BARUNAH E51 (AI) (ET)  
 TE MANIA BARUNAH X46 (AI) (ET)

TE MANIA UNLIMITED U3271 (AI) (ET)  
 TE MANIA INFINITY 04 379 AB  
 TE MANIA 95102  
**DAM: EVTG93 PEAKES NUMERAL G93 (AI)**  
 MILWILLAH IN FOCUS B115 (AI)  
 PEAKES NUMERAL E35  
 PEAKES NUMERAL C25



**SIRE: MILWILLAH ELSOM H283**

**MID-MAY 2017 ANGUS AUSTRALIA BREEDPLAN**

CED	GEM	GL	BW	200d	400d	600d	Mcw	Milk	SS	CWT	EMA	Rib	Rump	RBV	IMF	SELECTION INDEXES			
+1.3	-0.2	-5.8	+3.2	+42	+80	+106	+87	+17	+2.2	+59	+5.4	+1.5	+2.3	-1.3	+2.3	ABI	Dom.	Grain	Grass
45%	37%	84%	74%	68%	68%	66%	62%	45%	51%	57%	57%	58%	59%	54%	52%	+\$114	+\$103	+\$117	+\$112

Traits Observed: GL, CE, BWT, 200WT, 400WT, FAT, EMA, IMF

**Notes:** Very attractive son sired by Elsom H283 (\$48,000) top priced bull at the 2014 Milwillah bull sale. Terrific maternal lines in this pedigree with low birth weight.

**EBV's rated within the breed top 5% rump fat, top 10% rib fat, top 20% scrotal, top 25% birth wt, milk & IMF**

Purchaser: ..... \$ .....

# LOT 71

## PEAKES BOWEN OUTLIER L718 (AI) HBR EVTL718 24MTHS

Born: 27/06/2015

AMFU, NHFU, CAFU, DDF, RDF

Tattoo: L718

SCHURRTOP REALITY X723  
 MATAURI REALITY 839  
 MATAURI 06663  
**SIRE: NZE14647010F031 MATAURI OUTLIER F031**  
 KAROO W109 DIRECTION Z181  
 MATAURI 08860  
 MATAURI 105583

S A F FOCUS OF E R  
 MYTTY IN FOCUS  
 MYTTY COUNTESS 906  
**DAM: EVTH514 PEAKES ABIGAIL H514 (AI)**  
 MILWILLAH ULTRAVOX B100 (AI)  
 PEAKES ABIGAIL F34  
 BOWEN ABIGAIL X31



SIRE: MATAURI OUTLIER F031

### MID-MAY 2017 ANGUS AUSTRALIA BREEDPLAN

CED	CEM	GL	BW	200d	400d	600d	Mcw	Milk	SS	CWT	EMA	Rib	Rump	RBV	IMF	SELECTION INDEXES			
+3.6	+2.7	-6.4	+5.1	+54	+102	+131	+113	+17	+3.0	+75	+3.8	+0.0	+0.2	+0.2	+1.5	ABI	Dom.	Grain	Grass
51%	45%	81%	73%	68%	68%	66%	62%	53%	57%	58%	59%	59%	60%	55%	54%	+\$130	+\$122	+\$134	+\$128

Traits Observed: GL, CE, BWT, 200WT, 400WT, FAT, EMA, IMF

**Notes:** Width & all over body mass is a feature in this top Outlier son with excellent temperament.

**EBV's rated within the breed top 1% 400d, top 5% 200d, 600d, scrotal, carc. wt & Domestic Index, top 10% gest.L, mat. cow wt & Angus breeding Index, top 25% milk & Heavy grain Index.**

Purchaser: ..... \$ .....

# LOT 72

## PEAKES BOWEN EVIDENTLY L534 HBR EVTL534 23MTHS

Born: 17/08/2015

AMFU, NHFU, CAFU, DDF,

Tattoo: L534

TE MANIA BARTEL B219 (AI) (ET)  
 DUNOON EVIDENT E614 (AI) (ET)  
 DUNOON ELSA B681  
**SIRE: NKLJ81 KANSAS EVIDENTLY J81 (AI)**  
 B C MARATHON 7022 (ET)  
 KANSAS ANNIE E109 (AI) (ET)  
 KANSAS ANNIE X164 (AI) (ET)

VERMILION DATELINE 7078  
 VERMONT DREAMLINE B107 (AI) (ET)  
 VERMONT DREAM Y301 (AI) (ET)  
**DAM: CCVE253 VERMONT WILCOOLA E253**  
 B/R NEW FRONTIER 095  
 VERMONT A006 (AI) (ET)  
 VERMONT WILCOOLA X55 (AI) (ET)



### MID-MAY 2017 ANGUS AUSTRALIA BREEDPLAN

CED	CEM	GL	BW	200d	400d	600d	Mcw	Milk	SS	CWT	EMA	Rib	Rump	RBV	IMF	SELECTION INDEXES			
-2.3	-1.4	-2.2	+5.5	+49	+89	+114	+98	+16	+3.5	+61	+7.1	-1.6	-0.8	+1.9	+1.8	ABI	Dom.	Grain	Grass
45%	37%	46%	72%	67%	67%	64%	59%	49%	49%	56%	57%	57%	58%	53%	51%	+\$121	+\$116	+\$129	+\$117

Traits Observed: CE, BWT, 200WT, 400WT, FAT, EMA, IMF

**Notes:** Evidently was the best Evident son we could find. He has certainly shown his type in this 'Meat Machine' with soft skin combined with exceptional carcass weight. Maternal half brother K585 sold in the 2016 Bowen Bull Sale.

**EBV's rated within the breed top 1% scrotal, top 5% RBV, top 15% 200 & 400d, top 20% 600d. All indexes rated top 25% or better.**

Purchaser: ..... \$ .....

**LOT 73**

**PEAKES BOWEN OUTLIER L506 (AI) HBR EVTL506 23MTHS**  
 Born: 11/08/2015 AMFU, NHFU, CAFU, DDFU, Tattoo: L506

SCHURRTOP REALITY X723  
 MATAURI REALITY 839  
 MATAURI 06663  
**SIRE: NZE14647010F031 MATAURI OUTLIER F031**  
 KAROO W109 DIRECTION Z181  
 MATAURI 08860  
 MATAURI 105583  
 ARDROSSAN DIRECTION W109 (AI) (ET)  
 WOODBANK 6027 AB  
 WOODBANK 18  
**DAM: EVTG147 PEAKES JESTRESS G147 (AI) (ET)**  
 MERRIDALE SENSATION T2 (AI) (ET)  
 MERRIGRANGE JESTRESS V37  
 MERRIGRANGE JESTRESS P116 (AI) (ET)



**SIRE: MATAURI OUTLIER F031**

**MID-MAY 2017 ANGUS AUSTRALIA BREEDPLAN**

CE	GE	GL	BW	200d	400d	600d	Mcw	Milk	SS	CWT	EMA	Rib	Rump	RBV	IMF	SELECTION INDEXES			
-4.3	-0.5	+0.8	+7.1	+51	+96	+128	+120	+18	+2.5	+67	+3.6	+0.1	+0.4	-0.2	+1.1	ABI	Dom.	Grain	Grass
50%	42%	83%	74%	69%	69%	67%	64%	54%	58%	58%	59%	59%	60%	54%	53%	+\$97	+\$94	+\$93	+\$101

Traits Observed: GL, CE, BWT, 200WT, 400WT, FAT, EMA, IMF

**Notes:** Long bodied, good fronted upstanding sire. Maternal half brother K669 sold at 2016 Bowen bull sale.

**EBV's rated within the breed top 5% 400, 660d & Mat.cow wt. top 10% 200d, top 15% scrotal & Carc.wt., top 20% milk.**

Purchaser: ..... \$ .....

**LOT 74**

**PEAKES BOWEN REGENT L523 HBR EVTL523 23MTHS**  
 Born: 4/08/2015 AMFU, NHFU, CAFU, DDC, Tattoo: L523

RENNYLEA XPONENTIAL X555 (AI) (ET)  
 TE MANIA AMBASSADOR A134 (AI)  
 TE MANIA LOWAN Y211 (ACR) (AI)  
**SIRE: BNAD145 TUWHARETOA REGENT D145 (AI) (ET)**  
 YTHANBRAE HENRY VIII U8 (AI) (ET)  
 LAWSONS HENRY VIII Y5 (AI)  
 YTHANBRAE DIRECTION T270 (AI)  
 PAPA EQUATOR 2928  
 ARDROSSAN EQUATOR A241 (AI) (ET)  
 ARDROSSAN PRINCESS W38 (AI) (ET)  
**DAM: EVTF64 PEAKES DREAM F64**  
 ARDROSSAN ADMIRAL A2 (AI) (ET)  
 VERMONT DREAM D309 (AI) (ET)  
 VERMONT DREAM X215 (AI) (ET)



**MID-MAY 2017 ANGUS AUSTRALIA BREEDPLAN**

CE	GE	GL	BW	200d	400d	600d	Mcw	Milk	SS	CWT	EMA	Rib	Rump	RBV	IMF	SELECTION INDEXES			
-3.0	-5.9	-3.7	+4.9	+51	+96	+126	+112	+21	+2.0	+88	+5.4	-0.3	-1.7	-0.5	+3.2	ABI	Dom.	Grain	Grass
58%	56%	60%	74%	70%	71%	69%	67%	61%	59%	64%	64%	65%	66%	63%	62%	+\$121	+\$106	+\$142	+\$111

Traits Observed: CE, BWT, 200WT, 400WT, FAT, EMA, IMF

**Notes:** Long heavy bull with some of the breeds most influential sires in his pedigree. Very good data covering most of the basics with his marbling double the breed average. J618 half brother sold in 2015 Bowen Bull Sale & K537 full brother sold in 2016 Bowen Bull Sale.

**EBV's rated within the breed top 1% carc.wt, top 5% 400 & 600d, top 10% 200d, mat.cow wt, milk & IMF, top 15% H.Grain Index, top 25% Angus Breeding Index.**

Purchaser: ..... \$ .....

# LOT 75

## PEAKES BOWEN LAD L577 HBR EVTL577

23MTHS

Born: 27/07/2015

AMFU, NHFU, CAFU, DDFU, RDC

Tattoo: L577

WAIMATA LAD C78  
 WAIMATA E230  
 WAIMATA H920  
**SIRE: NJWE158 MILWILLAH LAD E158 (AI)**  
 C A FUTURE DIRECTION 5321  
 TE MANIA MITTAGONG X114 (AI)  
 TE MANIA MITTAGONG V1 (AI) (ET)



MYTTY IN FOCUS  
 MILWILLAH IN FOCUS B115 (AI)  
 MILWILLAH BARUNAH Z18 (AI)  
**DAM: EVTE82 PEAKES MONICA E82**  
 G T MAXIMUM  
 PEAKES MONICA B9 (AI)  
 KANSAS MONICA Y74 (AI)

### MID-MAY 2017 ANGUS AUSTRALIA BREEDPLAN

CED	CEM	GL	BW	200d	400d	600d	Mcw	Milk	SS	CWT	EMA	Rib	Rump	RBV	IMF	SELECTION INDEXES			
+1.6	-2.0	-6.3	+5.1	+44	+85	+110	+97	+15	+1.7	+59	+6.6	-0.2	-0.8	+0.7	+1.8	ABI	Dom.	Grain	Grass
46%	39%	59%	74%	68%	69%	68%	63%	54%	56%	60%	60%	61%	61%	57%	56%	+\$120	+\$112	+\$129	+\$116

Traits Observed: CE,BWT,200WT,400WT,FAT,EMA,IMF

**Notes:** Lad E158 sons are consistent in type, that is what you want in your progeny. Lad L577 is from top breeding female, maternal half brothers G81 & J551 sold in 2013 & 2015 Bowen bull sales. Full brother H668 sold in 2014 Bowen Bull Sale.

**EBV's rated within the breed top 10% short gestation length, top 20% EMA, top 25% 400 & 600d. Domestic, Heavy grain & Heavy grass indexes in the top 25%**

Purchaser: ..... \$ .....

# LOT 76

## PEAKES BOWEN REGENT L574 HBR EVTL574

23MTHS

Born: 14/08/2015

AMFU, NHFU, CAFU, DDFU,

Tattoo: L574

RENNYLEA XPONENTIAL X555 (AI) (ET)  
 TE MANIA AMBASSADOR A134 (AI)  
 TE MANIA LOWAN Y211 (ACR) (AI)  
**SIRE: BNAD145 TUWHARETOA REGENT D145 (AI) (ET)**  
 YTHANBRAE HENRY VIII U8 (AI) (ET)  
 LAWSONS HENRY VIII Y5 (AI)  
 YTHANBRAE DIRECTION T270 (AI)

TE MANIA UNLIMITED U3271 (AI) (ET)  
 HIGHLANDER OF STERN AB (ET)  
 STERN 2664  
**DAM: EVTF25 PEAKES DIANA F25 (AI)**  
 S V F HI ROAD  
 PEAKES DIANA C63 (AI) (ET)  
 ABBARINGA DIANA N2+93 (AI) (ET)

### MID-MAY 2017 ANGUS AUSTRALIA BREEDPLAN

CED	CEM	GL	BW	200d	400d	600d	Mcw	Milk	SS	CWT	EMA	Rib	Rump	RBV	IMF	SELECTION INDEXES			
-4.7	-8.5	-1.2	+5.5	+45	+85	+110	+103	+18	+1.5	+72	+5.9	-0.6	-1.9	+0.2	+2.8	ABI	Dom.	Grain	Grass
58%	56%	66%	74%	70%	70%	69%	67%	61%	59%	64%	64%	65%	65%	62%	61%	+\$102	+\$95	+\$117	+\$95

Traits Observed: CE,BWT,200WT,400WT,FAT,EMA,IMF

**Notes:** A top sire combining Regent D145 & Highlander of Stern with the added growth from the Dianna cow family.

**EBV's rated within the breed top 10% carcass wt, top 15% IMF, top 20% mat. cow wt & milk, top 25% 400 & 600d.**

Purchaser: ..... \$ .....

# LOT 77

## PEAKES BOWEN LAD L512 HBR EVTL512

23MTHS

Born: 1/08/2015

AMFU, NHFU, CAFU, DDFU, RDC

Tattoo: L512

WAIMATA LAD C78  
 WAIMATA E230  
 WAIMATA H920  
**SIRE: NJWE158 MILWILLAH LAD E158 (AI)**  
 C A FUTURE DIRECTION 5321  
 TE MANIA MITTAGONG X114 (AI)  
 TE MANIA MITTAGONG V1 (AI) (ET)

S A F NEUTRON  
 S A NEUTRON 377  
 S A QUEEN SUSAN 102  
**DAM: BPKB73 BOWEN ABIGAIL B73 (AI) (TW)**  
 G A R SLEEP EASY 1009  
 ABERDONIAN ABIGAIL R8 (AI) (ET)  
 CALLEEN ABIGAIL K58+90 (AI)



### MID-MAY 2017 ANGUS AUSTRALIA BREEDPLAN

CED	CEM	GL	BW	200d	400d	600d	Mcw	Milk	SS	CWT	EMA	Rib	Rump	RBV	IMF	SELECTION INDEXES			
-2.6	-3.8	-5.6	+7.0	+47	+89	+118	+113	+10	+1.5	+63	+6.0	-2.4	-3.1	+1.7	+1.6	ABI	Dom.	Grain	Grass
49%	41%	60%	73%	69%	69%	68%	63%	56%	58%	61%	61%	61%	61%	57%	56%	+\$109	+\$105	+\$118	+\$105

Traits Observed: CE,BWT,200WT,400WT,FAT,EMA,IMF

**Notes:** A Heavy lad son that will pack the power & weight into his progeny. Dam Abigail B73 has been a top producing female. Maternal half brothers F6, G48 & K560 sold at previous Bowen Bull sales.

**EBV's rated within the breed top 5% RBV, top 10% mat.cow wt, top 15% Gest.L., 400d & 600d, top 25% 200d & EMA.**

Purchaser: ..... \$ .....

# LOT 78

## PEAKES BOWEN REGENT L519 HBR EVTL519

23MTHS

Born: 5/08/2015

AMFU, NHFU, CAFU, DDFU,

Tattoo: L519

RENNYLEA XPONENTIAL X555 (AI) (ET)  
 TE MANIA AMBASSADOR A134 (AI)  
 TE MANIA LOWAN Y211 (ACR) (AI)  
**SIRE: BNAD145 TUWHARETOA REGENT D145 (AI) (ET)**  
 YTHANBRAE HENRY VIII U8 (AI) (ET)  
 LAWSONS HENRY VIII Y5 (AI)  
 YTHANBRAE DIRECTION T270 (AI)

TE MANIA UNLIMITED U3271 (AI) (ET)  
 HIGHLANDER OF STERN AB (ET)  
 STERN 2664  
**DAM: EVTG42 PEAKES LULU G42 (AI)**  
 ARDROSSAN DIRECTION W109 (AI) (ET)  
 PEAKES LULU C32 (AI)  
 BOWEN LULU W27 (AI)

### MID-MAY 2017 ANGUS AUSTRALIA BREEDPLAN

CED	CEM	GL	BW	200d	400d	600d	Mcw	Milk	SS	CWT	EMA	Rib	Rump	RBV	IMF	SELECTION INDEXES			
-2.1	-4.2	-4.3	+5.4	+46	+80	+111	+112	+17	+1.7	+73	+5.4	-0.2	-0.7	-0.4	+2.9	ABI	Dom.	Grain	Grass
59%	57%	67%	75%	70%	71%	69%	68%	61%	60%	64%	65%	65%	66%	63%	62%	+\$109	+\$96	+\$125	+\$102

Traits Observed: CE,BWT,200WT,400WT,FAT,EMA,IMF

**Notes:** The Regent Highlander cross has combined well. This Regent son has excellent weight gain & carcass merit. K504 full brother sold in the 2016 Bowen Bull Sale.

**EBV's rated within the breed top 5% carc.wt, top 10% Mat.cow wt & IMF, top 25% Milk.**

Purchaser: ..... \$ .....

**LOT 79****WITHDRAWN****LOT 80****PEAKES BOWEN EVIDENTLY L608 HBR EVTL608****23MTHS**

Born: 1/08/2015

AMFU, NHF, CAFU, DDC,

Tattoo: L608

TE MANIA BARTEL B219 (AI) (ET)  
 DUNOON EVIDENT E614 (AI) (ET)  
 DUNOON ELSA B681

**SIRE: NKLJ81 KANSAS EVIDENTLY J81 (AI)**

B C MARATHON 7022 (ET)  
 KANSAS ANNIE E109 (AI) (ET)  
 KANSAS ANNIE X164 (AI) (ET)

BANQUET XPLANATION X060 (AI) (ET)  
 BANQUET BUNDY B002 (AI) (ET)  
 BLACK GOLD CHAMPAGNE J031+89 (AI) (ET)

**DAM: EVTE19 PEAKES NUMERAL E19 (AI)**

C A FUTURE DIRECTION 5321  
 BOWEN NUMERAL X24 (AI)  
 BOWEN NUMERAL T11 (AI)

**MID-MAY 2017 ANGUS AUSTRALIA BREEDPLAN**

CED	CEM	GL	BW	200d	400d	600d	Mcw	Milk	SS	CWT	EMA	Rib	Rump	RBY	IMF	SELECTION INDEXES			
																ABI	Dom.	Grain	Grass
-0.1	-1.8	-2.2	+4.5	+44	+79	+102	+86	+14	+3.1	+58	+8.3	-0.7	-0.5	+1.4	+1.5				
45%	37%	54%	73%	67%	68%	65%	61%	48%	51%	57%	57%	58%	59%	54%	52%	+\$109	+\$108	+\$110	+\$109

Traits Observed: CE,BWT,200WT,400WT,FAT,EMA,IMF

**Notes:** This stylish eye catching Evidently son will put mass & extra weight into his progeny, would be ideal for the feedlot producer. Maternal brothers H538 & J629 sold at previous Bowen Bull Sales.

**EBV's rated within the breed top 5% scrotal & EMA, top 10% RBY.**

Purchaser: ..... \$ .....



**TUWHARETOA  
 REGENT D145**

**TRAIT LEADER  
 IMF & CARCASS  
 WEIGHT.**

**25 SONS IN SALE**

# LOT 81

## PEAKES BOWEN FATHOM L770 (AI) (ET) HBR EVTL770 22MTHS

Born: 3/09/2015

AMFU, NHFU, CAFU, DDF,

Tattoo: L770

CONNEALY WHITMAN  
 CONNEALY ALL AROUND  
 ENTRUST OF CONANGA 894  
**SIRE: NKL167 KANSAS FATHOM F167 (AI)**  
 ARDROSSAN DIRECTION W109 (AI) (ET)  
 KANSAS ANNIE B170 (AI) (ET)  
 KANSAS ANNIE Y18 (AI) (ET)

PAPA EQUATOR 2928  
 ARDROSSAN EQUATOR A241 (AI) (ET)  
 ARDROSSAN PRINCESS W38 (AI) (ET)  
**DAM: EVTG17 PEAKES NUMERAL G17 (AI)**  
 MILLAH MURRAH NEW DESIGN U68 (AI)  
 BOWEN NUMERAL Y46  
 MORDALLUP NUMERAL P256



### MID-MAY 2017 ANGUS AUSTRALIA BREEDPLAN

CED	CEM	GL	BW	200d	400d	600d	Mcw	Milk	SS	CWT	EMA	Rib	Rump	RBY	IMF	SELECTION INDEXES			
-1.8	+0.3	-4.4	+5.5	+51	+95	+123	+105	+19	+2.3	+73	+4.8	-0.6	-0.2	+0.4	+2.0	ABI	Dom.	Grain	Grass
46%	38%	62%	72%	67%	67%	65%	60%	49%	53%	57%	57%	58%	58%	54%	52%	+\$120	+\$112	+\$128	+\$117

Traits Observed: BWT,200WT,400WT,FAT,EMA,IMF

**Notes:** An ET son from a brilliant Equator A241 daughter - Numeral G17, Connealy All round was used heavily in the Connealy herd in USA.

**EBV's rated within the breed top 5% 400d & Carc.wt, top 10% 200d & 600d, top 15% mat.cow wt & milk, top 20% scrotal & Heavy grass index, top 25% Angus breeding & domestic indexes.**

Purchaser: ..... \$ .....

# LOT 82

## PEAKES BOWEN REGENT L530 HBR EVTL530

Born: 15/08/2015

AMFU, NHF, CAFU, DDF,

23MTHS

Tattoo: L530

RENNYLEA XPONENTIAL X555 (AI) (ET)  
 TE MANIA AMBASSADOR A134 (AI)  
 TE MANIA LOWAN Y211 (ACR) (AI)  
**SIRE: BNAD145 TUWHARETOA REGENT D145 (AI) (ET)**  
 YTHANBRAE HENRY VIII U8 (AI) (ET)  
 LAWSONS HENRY VIII Y5 (AI)  
 YTHANBRAE DIRECTION T270 (AI)

ARDROSSAN DIRECTION W109 (AI) (ET)  
 BOWEN DIRECTION B64 (AI)  
 BOWEN ABIGAIL Y13  
**DAM: EVTD46 PEAKES LEAH D46**  
 DSK HU X-TRA STRENGTH X4 (AI) (ET)  
 BOWEN LEAH B11  
 BOWEN LEAH X5



### MID-MAY 2017 ANGUS AUSTRALIA BREEDPLAN

CED	CEM	GL	BW	200d	400d	600d	Mcw	Milk	SS	CWT	EMA	Rib	Rump	RBY	IMF	SELECTION INDEXES			
-3.3	-4.5	-3.6	+5.7	+47	+83	+113	+93	+15	+2.1	+74	+5.4	+1.3	+0.7	-0.9	+2.8	ABI	Dom.	Grain	Grass
56%	53%	60%	74%	70%	70%	69%	67%	61%	60%	63%	64%	64%	65%	61%	60%	+\$113	+\$98	+\$124	+\$107

Traits Observed: CE,BWT,200WT,400WT,FAT,EMA,IMF

**Notes:** Excellent Regent son, showing his sires phenotype, great length & structural soundness. Maternal half brothers, G58 & J626 & K652 full brother selling at previous Bowen Bull Sales.

**EBV's rated within the breed top 5% carc.wt, top 15% rib fat & IMF, top 20% 600d, top 25% 200d, scrotal & rump fat.**

Purchaser: ..... \$ .....

**LOT 83**

**PEAKES BOWEN REGENT L607 HBR EVTL607**

**23MTHS**

Born: 4/08/2015

AMFU, NHF, CAFU, DDFU,

Tattoo: L607

RENNYLEA XPONENTIAL X555 (AI) (ET)  
 TE MANIA AMBASSADOR A134 (AI)  
 TE MANIA LOWAN Y211 (ACR) (AI)

**SIRE: BNAD145 TUWHARETOA REGENT D145 (AI) (ET)**

YTHANBRAE HENRY VIII U8 (AI) (ET)  
 LAWSONS HENRY VIII Y5 (AI)  
 YTHANBRAE DIRECTION T270 (AI)

TE MANIA UNLIMITED U3271 (AI) (ET)  
 TE MANIA INFINITY 04 379 AB  
 TE MANIA 95102

**DAM: EVTG63 PEAKES LEAH G63 (AI)**

ARDROSSAN DIRECTION W109 (AI) (ET)  
 PEAKES LEAH D61 (AI)  
 BOWEN LEAH Z11 (AI)

**MID-MAY 2017 ANGUS AUSTRALIA BREEDPLAN**

CED	GEM	GL	BW	200d	400d	600d	Mcw	Milk	SS	CWT	EMA	Rib	Rump	RBV	IMF	SELECTION INDEXES			
-3.1	-6.8	-2.6	+4.5	+42	+79	+106	+95	+15	+1.9	+69	+5.1	+2.2	+2.8	-2.2	+3.0	ABI	Dom.	Grain	Grass
58%	56%	65%	66%	69%	70%	68%	66%	61%	59%	64%	65%	65%	66%	63%	62%	+\$111	+\$92	+\$123	+\$103

Traits Observed: CE,200WT,400WT,FAT,EMA,IMF

**Notes:** A real eye catcher with great structure & stoutness.

**EBV's rated within the breed top 5% rib & rump fats, top 10% carc.wt & IMF.**

Purchaser: ..... \$ .....

**LOT 84**

**PEAKES BOWEN REGENT L645 HBR EVTL645**

**23MTHS**

Born: 7/08/2015

AMFU, NHF, CAFU, DDF,

Tattoo: L645

RENNYLEA XPONENTIAL X555 (AI) (ET)  
 TE MANIA AMBASSADOR A134 (AI)  
 TE MANIA LOWAN Y211 (ACR) (AI)

**SIRE: BNAD145 TUWHARETOA REGENT D145 (AI) (ET)**

YTHANBRAE HENRY VIII U8 (AI) (ET)  
 LAWSONS HENRY VIII Y5 (AI)  
 YTHANBRAE DIRECTION T270 (AI)

C A FUTURE DIRECTION 5321  
 ARDROSSAN DIRECTION W109 (AI) (ET)  
 ARDROSSAN WILCOOLA Q71 (AI) (ET)

**DAM: BPKB61 BOWEN NUMERAL B61 (AI)**

MILLAH MURRAH NEW DESIGN U68 (AI)  
 BOWEN NUMERAL Y46  
 MORDALLUP NUMERAL P256



**MID-MAY 2017 ANGUS AUSTRALIA BREEDPLAN**

CED	GEM	GL	BW	200d	400d	600d	Mcw	Milk	SS	CWT	EMA	Rib	Rump	RBV	IMF	SELECTION INDEXES			
-2.0	-3.5	-3.0	+5.5	+46	+85	+115	+103	+17	+1.8	+77	+5.5	+1.2	+0.0	-0.9	+2.9	ABI	Dom.	Grain	Grass
59%	57%	67%	75%	71%	71%	70%	68%	64%	62%	65%	65%	66%	66%	63%	62%	+\$115	+\$100	+\$130	+\$108

Traits Observed: CE,BWT,200WT,400WT,FAT,EMA,IMF

**Notes:** Typical of the Regent D145 sons, he has good structure, frame & softness. Maternal brothers D36, F110 & G140 sold at previous Bowen bull sales.

**EBV's rated within the breed top 5% carc. wt, top 10% IMF, top 15% rib fat, top 20% 600d & mat. cow wt, top 25% 400d, milk & Heavy grain Index.**

Purchaser: ..... \$ .....

**LOT 85****PEAKES BOWEN TOTAL FOCUS L6 L677 (AI) HBR EVTL677 23MTHS**

Born: 3/08/2015

AMFU, NHFU, CAFU, DDF,

Tattoo: L677

MYTTY IN FOCUS  
 CUDLOBE IN FOCUS 5S  
 CUDLOBE ENCHANTRESS 55M  
**SIRE: CAN1734387 CUDLOBE TOTAL FOCUS 6A**  
 TC TOTAL 410  
 CUDLOBE EXQUISITE LADY 69Y  
 CUDLOBE EXQUISITE LADY 83M

TE MANIA AMBASSADOR A134 (AI)  
 TUWHARETOA REGENT D145 (AI) (ET)  
 LAWSONS HENRY VIII Y5 (AI)  
**DAM: EVTJ661 PEAKES ANNIE J661 (AI) (ET)**  
 BON VIEW NEW DESIGN 1407  
 KANSAS ANNIE Y18 (AI) (ET)  
 AMAROO EXPO ANNIE U020 (AI) (ET)

**MID-MAY 2017 ANGUS AUSTRALIA BREEDPLAN**

CED	CEM	GL	BW	200d	400d	600d	Mcw	Milk	SS	CWT	EMA	Rib	Rump	RBY	IMF	SELECTION INDEXES			
																ABI	Dom.	Grain	Grass
+3.1	+0.8	-7.5	+4.1	+55	+93	+123	+108	+16	+2.4	+70	+4.7	+0.6	-0.4	+0.2	+2.6	+132	+119	+145	+126
44%	36%	82%	71%	65%	66%	63%	57%	48%	50%	56%	56%	56%	56%	52%	50%				

Traits Observed: GL, CE, BWT, 200WT, 400WT, FAT, EMA, IMF

**Notes:** A very classy pedigree. Total Focus 6A sire was a standout on our North American Trip, topping the Cudlobe sale. Excellent calving ease genetics with very good marbling.

**EBV's rated within the breed top 5% Gest.L & 200d, top 10% 400d, 600d, carc.wt, Angus breeding & Heavy grain Indexes, top 15% mat. cow wt & scrotal, top 20% IMF.**

Purchaser: ..... \$ .....

**LOT 86****PEAKES BOWEN COMPLEMENT L54 L543 (AI) HBR EVTL543 23MTHS**

Born: 30/07/2015

AMFU, NHFU, CAFU, DDFU, RDF

Tattoo: L543

C A FUTURE DIRECTION 5321  
 BASIN FRANCHISE P142  
 BASIN CHLOE 812L  
**SIRE: USA16198796 EF COMPLEMENT 8088**  
 BR MIDLAND  
 EF EVERELDA ENTENSE 6117  
 EVERELDA ENTENSE 869

MYTTY IN FOCUS  
 MILWILLAH IN FOCUS B115 (AI)  
 MILWILLAH BARUNAH Z18 (AI)  
**DAM: EVTG40 PEAKES MONA G40 (AI)**  
 G DAR EXECUTIVE 727  
 BOWEN MONA S10 (AI)  
 PALES WB MONA N9+93 (AI) (ET)

**MID-MAY 2017 ANGUS AUSTRALIA BREEDPLAN**

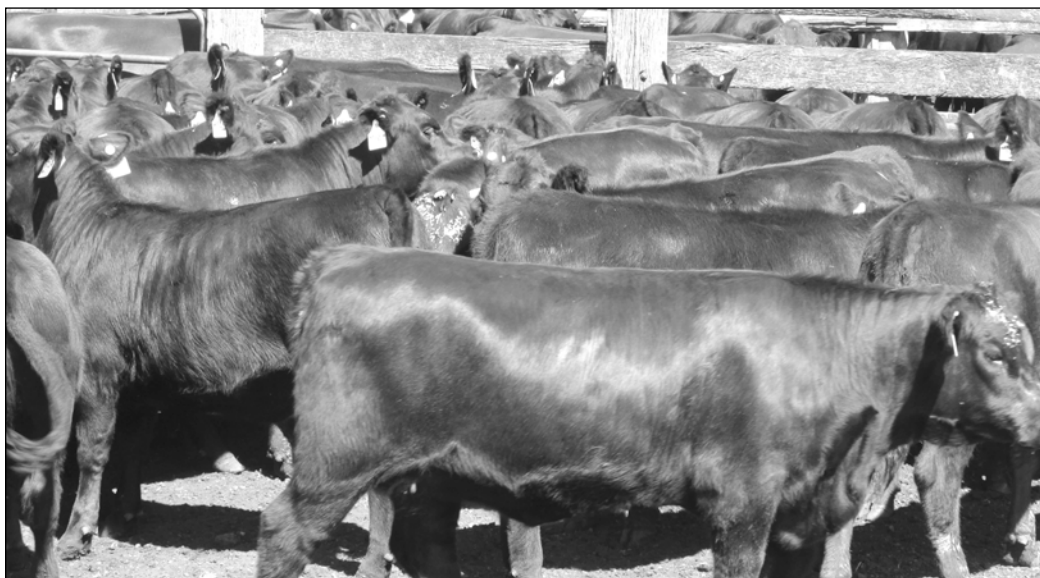
CED	CEM	GL	BW	200d	400d	600d	Mcw	Milk	SS	CWT	EMA	Rib	Rump	RBY	IMF	SELECTION INDEXES			
																ABI	Dom.	Grain	Grass
+2.5	+1.4	-5.9	+4.0	+47	+84	+107	+84	+18	+1.5	+61	+5.8	+0.9	+1.2	+0.1	+1.7	+111	+110	+109	+113
52%	44%	83%	74%	69%	69%	68%	65%	54%	58%	58%	60%	60%	60%	55%	55%				

Traits Observed: GL, CE, BWT, 200WT, 400WT, FAT, EMA, IMF

**Notes:** Sired by very popular sire EF Complement, pedigree contains a double cross of low birth weight & short gestation. Suitable for heifers. Maternal half brother K689 sold in the 2016 Bowen Bull Sale.

**EBV's rated within the breed top 15% short gest. & rump fat, top 20% milk & rib fat, top 25% 200 & 400d.**

Purchaser: ..... \$ .....

**ANGUS WEANER HEIFERS**

**LOT 87****PEAKES BOWEN REGENT L603 HBR EVTL603****23MTHS**

Born: 29/07/2015

AMFU, NHFU, CAFU, DDFU,

Tattoo: L603

RENNYLEA XPONENTIAL X555 (AI) (ET)  
 TE MANIA AMBASSADOR A134 (AI)  
 TE MANIA LOWAN Y211 (ACR) (AI)  
**SIRE: BNAD145 TUWHARETOA REGENT D145 (AI) (ET)**  
 YTHANBRAE HENRY VIII U8 (AI) (ET)  
 LAWSONS HENRY VIII Y5 (AI)  
 YTHANBRAE DIRECTION T270 (AI)

TE MANIA UNLIMITED U3271 (AI) (ET)  
 HIGHLANDER OF STERN AB (ET)  
 STERN 2664  
**DAM: EVTG18 PEAKES VICKY G18 (AI)**  
 ARDROSSAN DIRECTION W109 (AI) (ET)  
 PEAKES VICKY B68 (AI)  
 MOOKI RIVER VICKY S6 (AI) (ET)

**MID-MAY 2017 ANGUS AUSTRALIA BREEDPLAN**

CED	CEM	GL	BW	200d	400d	600d	Mcw	Milk	SS	CWT	EMA	Rib	Rump	RBV	IMF	SELECTION INDEXES			
-1.2	-4.0	-3.5	+5.0	+44	+80	+109	+102	+17	+1.6	+70	+5.3	+1.3	+1.2	-1.2	+2.9	ABI	Dom.	Grain	Grass
58%	56%	62%	74%	70%	70%	69%	67%	61%	60%	64%	64%	65%	65%	62%	61%	+\$114	+\$98	+\$127	+\$106

Traits Observed: CE,BWT,200WT,400WT,FAT,EMA,IMF

**Notes:** Eye catching Regent son with mobility & the excellent type from the Regent Highlander cross. Pedigree is stacked with some of the breeds most influential sires.

**EBV's rated within the breed top 10% Carc.wt & IMF, top 15% Rib & Rump fats, top 20% mat. cow wt, top 25% milk.**

Purchaser: ..... \$ .....

**LOT 88****PEAKES BOWEN LAD L657 HBR EVTL657****23MTHS**

Born: 10/08/2015

AMFU, NHFU, CAFU, DDC,

Tattoo: L657

WAIMATA LAD C78  
 WAIMATA E230  
 WAIMATA H920  
**SIRE: NJWE158 MILWILLAH LAD E158 (AI)**  
 C A FUTURE DIRECTION 5321  
 TE MANIA MITTAGONG X114 (AI)  
 TE MANIA MITTAGONG V1 (AI) (ET)

YTHANBRAE HENRY VIII U8 (AI) (ET)  
 N.E.D HENRY VIII Z3 (AI)  
 KANSAS MONICA W67 (AI)  
**DAM: EVTC54 PEAKES NUMERAL C54**  
 MILLAH MURRAH NEW DESIGN U68 (AI)  
 BOWEN NUMERAL Y4  
 BOWEN NUMERAL T11 (AI)

**MID-MAY 2017 ANGUS AUSTRALIA BREEDPLAN**

CED	CEM	GL	BW	200d	400d	600d	Mcw	Milk	SS	CWT	EMA	Rib	Rump	RBV	IMF	SELECTION INDEXES			
-3.1	-3.7	-4.7	+7.3	+47	+91	+119	+99	+11	+2.0	+64	+6.7	-0.6	-1.1	+0.5	+2.3	ABI	Dom.	Grain	Grass
45%	38%	57%	73%	68%	69%	67%	62%	55%	54%	59%	59%	61%	61%	56%	55%	+\$125	+\$111	+\$140	+\$117

Traits Observed: CE,BWT,200WT,400WT,FAT,EMA,IMF

**Notes:** Pedigree combines some top cow families.

**EBV's rated within the breed top 10% 400d & 600d, top 15% Angus breeding & Heavy grain Indexes, top 20% EMA, top 25% 200d, mat.cow wt, carc.wt & IMF.**

Purchaser: ..... \$ .....

# LOT 89

## PEAKES BOWEN REGENT L616 HBR EVTL616

23MTHS

Born: 12/08/2015

AMFU, NHFU, CAFU, DDFU,

Tattoo: L616

RENNYLEA XPONENTIAL X555 (AI) (ET)  
 TE MANIA AMBASSADOR A134 (AI)  
 TE MANIA LOWAN Y211 (ACR) (AI)  
**SIRE: BNAD145 TUWHARETOA REGENT D145 (AI) (ET)**  
 YTHANBRAE HENRY VIII U8 (AI) (ET)  
 LAWSONS HENRY VIII Y5 (AI)  
 YTHANBRAE DIRECTION T270 (AI)

TE MANIA YORKSHIRE Y437 (AI)  
 TE MANIA BERKLEY B1 (AI)  
 TE MANIA LOWAN Z53 (AI) (ET)  
**DAM: EVTF120 PEAKES ABIGAIL F120 (AI) (TW)**  
 GAR SLEEP EASY 1009  
 BOWEN ABIGAIL S7 (AI) (ET)  
 CALLEEN ABIGAIL K58+90 (AI)



### MID-MAY 2017 ANGUS AUSTRALIA BREEDPLAN

CED	CEM	GL	BW	200d	400d	600d	Mcw	Milk	SS	CWT	EMA	Rib	Rump	RBV	IMF	SELECTION INDEXES			
-1.2	-3.5	-4.0	+5.7	+48	+89	+119	+120	+15	+1.4	+79	+4.4	-0.1	-1.6	-0.8	+3.6	ABI	Dom.	Grain	Grass
58%	56%	59%	64%	67%	69%	66%	63%	62%	60%	63%	63%	63%	64%	61%	60%	+\$126	+\$106	+\$152	+\$112

Traits Observed: CE,200WT,400WT,FAT,EMA,IMF

**Notes:** Athletic Regent D145 son with extra length & excellent carcass data. Maternal half brother H516 sold in 2014 Bowen bull sale.

**EBV's rated within the breed top 1% carc.wt, top 5% mat. cow wt & IMF, top 10% 600d & Heavy grain index, top 15% 400d & Angus breeding index, top 20% 200d.**

Purchaser: ..... \$ .....

# LOT 90

## PEAKES BOWEN REGENT L589 HBR EVTL589

23MTHS

Born: 26/07/2015

AMFU, NHFU, CAFU, DDFU,

Tattoo: L589

RENNYLEA XPONENTIAL X555 (AI) (ET)  
 TE MANIA AMBASSADOR A134 (AI)  
 TE MANIA LOWAN Y211 (ACR) (AI)  
**SIRE: BNAD145 TUWHARETOA REGENT D145 (AI) (ET)**  
 YTHANBRAE HENRY VIII U8 (AI) (ET)  
 LAWSONS HENRY VIII Y5 (AI)  
 YTHANBRAE DIRECTION T270 (AI)

TE MANIA UNLIMITED U3271 (AI) (ET)  
 HIGHLANDER OF STERN AB (ET)  
 STERN 2664  
**DAM: EVTG67 PEAKES DANDLOO G67 (AI)**  
 DSK V6 ACHILLES A116  
 PEAKES DANDLOO D70  
 BOWEN DANDLOO W1 (AI)



### MID-MAY 2017 ANGUS AUSTRALIA BREEDPLAN

CED	CEM	GL	BW	200d	400d	600d	Mcw	Milk	SS	CWT	EMA	Rib	Rump	RBV	IMF	SELECTION INDEXES			
-5.6	-7.4	-1.2	+6.3	+49	+85	+113	+102	+16	+1.8	+71	+4.3	+0.3	-0.1	-0.5	+2.7	ABI	Dom.	Grain	Grass
57%	55%	65%	74%	69%	70%	69%	66%	60%	59%	63%	64%	64%	65%	62%	61%	+\$99	+\$91	+\$108	+\$94

Traits Observed: CE,BWT,200WT,400WT,FAT,EMA,IMF

**Notes:** Stylish long bodied Regent son.

**EBV's rated within the breed top 10% Carc. wt, top 15% 200d & IMF, top 20% 600d & Mat.cow wt, top 25% 400d.**

Purchaser: ..... \$ .....

# LOT 91

## PEAKES BOWEN EVIDENTLY L511 HBR EVTL511

23MTHS

Born: 10/09/2015

AMFU, NHFU, CAFU, DDFU,

Tattoo: L511

TE MANIA BARTEL B219 (AI) (ET)  
DUNOON EVIDENT E614 (AI) (ET)  
DUNOON ELSA B681

B T ULTRAVOX 297E  
MILWILLAH ULTRAVOX B100 (AI)  
TE MANIA JEDDA X66 (AI) (ET)

**SIRE: NKLJ81 KANSAS EVIDENTLY J81 (AI)**  
B C MARATHON 7022 (ET)  
KANSAS ANNIE E109 (AI) (ET)  
KANSAS ANNIE X164 (AI) (ET)

**DAM: EVTF57 PEAKES VICKY F57**  
RITO 9FB3 OF 5H11 FULLBACK  
MOOKI RIVER VICKY S6 (AI) (ET)  
MERRIGRANGE VICKY H47+88 (AI) (ET)

### MID-MAY 2017 ANGUS AUSTRALIA BREEDPLAN

CED	CEM	GL	BW	200d	400d	600d	Mcw	Milk	SS	CWT	EMA	Rib	Rump	RBV	IMF	SELECTION INDEXES			
-1.4	-2.2	-1.2	+5.1	+50	+87	+115	+105	+18	+3.0	+65	+8.1	-0.7	-0.3	+1.3	+1.4	ABI	Dom.	Grain	Grass
43%	35%	46%	72%	67%	67%	64%	60%	47%	48%	55%	56%	57%	58%	53%	51%	+\$110	+\$107	+\$110	+\$110

Traits Observed: CE,BWT,200WT,400WT,FAT,EMA,IMF

**Notes:** Soft easy type.K657 maternal half brother sold at 2017 Bowen bull sale.

**EBV's rated within the breed top 5% scrotal, top 10% 200d, EMA & RBV, top 15% Mat.cow wt., top 20% 400,600d,milk & carc.wt.**

Purchaser: ..... \$ .....

# LOT 92

## PEAKES BOWEN EVIDENTLY L642 HBR EVTL642

23MTHS

Born: 6/08/2015

AMFU, NHF, CAFU, DDFU,

Tattoo: L642

TE MANIA BARTEL B219 (AI) (ET)  
DUNOON EVIDENT E614 (AI) (ET)  
DUNOON ELSA B681

G A R PRECISION 1680  
G A R PINNACLE  
G A R EXT 2114

**SIRE: NKLJ81 KANSAS EVIDENTLY J81 (AI)**  
B C MARATHON 7022 (ET)  
KANSAS ANNIE E109 (AI) (ET)  
KANSAS ANNIE X164 (AI) (ET)

**DAM: VLYX1227 LAWSONS PINNACLE X1227 (AI)**  
GARDENS PRIME TIME  
YTHANBRAE PRIME S355 (AI)  
YTHANBRAE P87 (AI)

### MID-MAY 2017 ANGUS AUSTRALIA BREEDPLAN

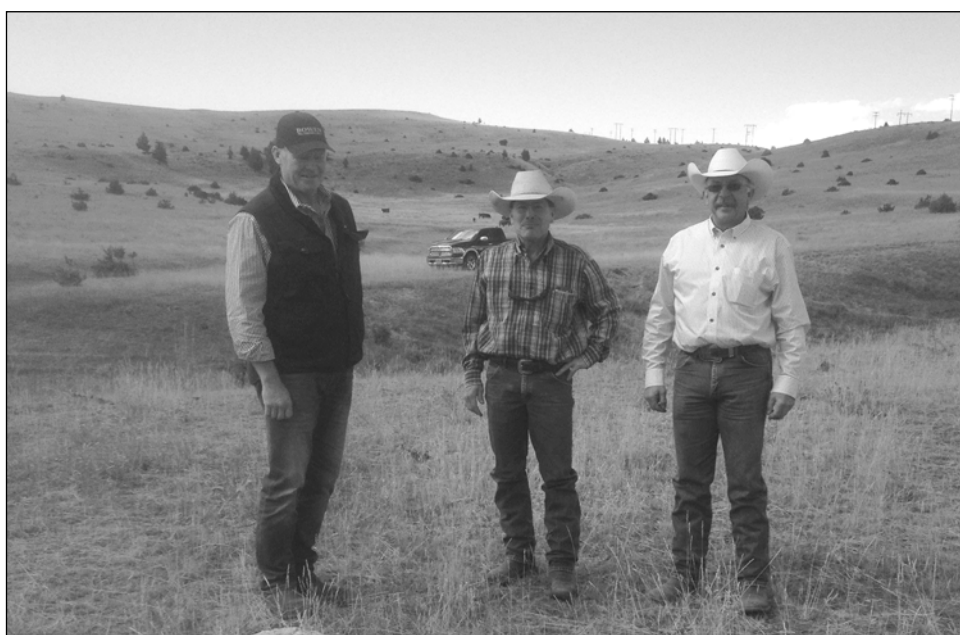
CED	CEM	GL	BW	200d	400d	600d	Mcw	Milk	SS	CWT	EMA	Rib	Rump	RBV	IMF	SELECTION INDEXES			
-5.4	-2.2	-1.9	+6.6	+49	+86	+115	+108	+14	+2.8	+66	+7.0	+0.2	+0.9	+0.8	+1.4	ABI	Dom.	Grain	Grass
47%	39%	55%	74%	68%	69%	66%	62%	52%	52%	58%	58%	59%	60%	55%	53%	+\$106	+\$99	+\$107	+\$105

Traits Observed: CE,BWT,200WT,400WT,FAT,EMA,IMF

**Notes:** Exceptional roundness to this young sires carcass, with tonnes of weight & power. Ideal for the feedlot steer producer. Maternal brothers G12 & H581 have sold at previous Bowen Bull Sales.

**EBV's rated within the breed top 5% scrotal, top 15% Birth wt, mat.cow wt & EMA, top 20% 200d, 400d, carc.wt & rump fat, top 25% RBV**

Purchaser: ..... \$ .....



*Stephen touring cattle herds in the USA and Canada in August 2016. Pictured with Bruce Thomas - Thomas Herefords and Alvin Pawlitza - Hill Galore Stock Farms.*

# LOT 93

## PEAKES BOWEN REGENT L570 HBR EVTL570

23MTHS

Born: 30/07/2015

AMFU, NHFU, CAFU, DDFU,

Tattoo: L570

RENNYLEA XPONENTIAL X555 (AI) (ET)  
 TE MANIA AMBASSADOR A134 (AI)  
 TE MANIA LOWAN Y211 (ACR) (AI)  
**SIRE: BNAD145 TUWHARETOA REGENT D145 (AI) (ET)**  
 YTHANBRAE HENRY VIII U8 (AI) (ET)  
 LAWSONS HENRY VIII Y5 (AI)  
 YTHANBRAE DIRECTION T270 (AI)

G T MAXIMUM  
 BASIN MAX 602C  
 BASIN ELINE ERICA 315U  
**DAM: EVTD84 PEAKES LULU D84 (AI)**  
 C A FUTURE DIRECTION 5321  
 BOWEN LULU X42 (AI)  
 CALLEEN LULU P19



### MID-MAY 2017 ANGUS AUSTRALIA BREEDPLAN

CED	CEM	GL	BW	200d	400d	600d	Mcw	Milk	SS	CWT	EMA	Rib	Rump	RBV	IMF	SELECTION INDEXES			
-3.7	-5.7	-2.7	+4.8	+38	+70	+95	+92	+13	+1.0	+66	+4.8	+0.4	-0.6	-0.8	+2.7	ABI	Dom.	Grain	Grass
59%	57%	67%	75%	71%	71%	70%	68%	63%	60%	65%	65%	66%	66%	63%	62%	+\$85	+\$81	+\$93	+\$82

Traits Observed: CE,BWT,200WT,400WT,FAT,EMA,IMF

**Notes:** Free moving powerful Regent son, excelling in length & performance.

**EBV's rated within the breed top 15% IMF & top 20% carcass wt.**

Purchaser: ..... \$ .....

# LOT 94

## PEAKES BOWEN REGENT L560 HBR EVTL560

22MTHS

Born: 1/09/2015

AMFU, NHFU, CAFU, DDFU, RDF

Tattoo: L560

RENNYLEA XPONENTIAL X555 (AI) (ET)  
 TE MANIA AMBASSADOR A134 (AI)  
 TE MANIA LOWAN Y211 (ACR) (AI)  
**SIRE: BNAD145 TUWHARETOA REGENT D145 (AI) (ET)**  
 YTHANBRAE HENRY VIII U8 (AI) (ET)  
 LAWSONS HENRY VIII Y5 (AI)  
 YTHANBRAE DIRECTION T270 (AI)

TE MANIA UNLIMITED U3271 (AI) (ET)  
 HIGHLANDER OF STERN AB (ET)  
 STERN 2664  
**DAM: EVTH541 PEAKES PRIMROSE H541 (AI)**  
 MILWILLAH IN FOCUS B115 (AI)  
 PEAKES PRIMROSE E40  
 BOWEN PRIMROSE B35



### MID-MAY 2017 ANGUS AUSTRALIA BREEDPLAN

CED	CEM	GL	BW	200d	400d	600d	Mcw	Milk	SS	CWT	EMA	Rib	Rump	RBV	IMF	SELECTION INDEXES			
-2.8	-5.8	-3.1	+5.9	+47	+82	+113	+110	+16	+1.7	+70	+4.3	+0.7	+0.6	-1.2	+3.2	ABI	Dom.	Grain	Grass
57%	55%	66%	74%	69%	70%	69%	66%	60%	59%	63%	64%	64%	65%	62%	61%	+\$110	+\$94	+\$125	+\$101

Traits Observed: CE,BWT,200WT,400WT,FAT,EMA,IMF

**Notes:** The Regent x Highlander of Stern cross is outstanding, you seem to get the best of both sires with the carcass merits of Regents hardiness & doing ability of Highlander.

**EBV's rated within the breed top 10% mat. cow wt. , carc. wt & IMF. Top 20% 600d. Top 25% 200d & rump fat.**

Purchaser: ..... \$ .....

# LOT 95

## PEAKES BOWEN EVIDENTLY L510 (APR) APR EVTL510 23MTHS

Born: 5/08/2015

AMFU, NHFU, CAFU, DDF,

Tattoo: L510

TE MANIA BARTEL B219 (AI) (ET)  
 DUNOON EVIDENT E614 (AI) (ET)  
 DUNOON ELSA B681

**SIRE: NKLJ81 KANSAS EVIDENTLY J81 (AI)**

B C MARATHON 7022 (ET)  
 KANSAS ANNIE E109 (AI) (ET)  
 KANSAS ANNIE X164 (AI) (ET)

YTHANBRAE HENRY VIII U8 (AI) (ET)  
 N.E.D HENRY VIII Z3 (AI)  
 KANSAS MONICA W67 (AI)

**DAM: EVTD13 PEAKES HEART D13 (APR)**

SUMMITCREST POWER PLAY M032 (IMP USA)  
 BOWEN HEART Y47 (APR) (AI)  
 BOWEN HEART V4 (AI) (ET)



### MID-MAY 2017 ANGUS AUSTRALIA BREEDPLAN

CE	CEM	GL	BW	200d	400d	600d	Mcw	Milk	SS	CWT	EMA	Rib	Rump	RBY	IMF	SELECTION INDEXES			
-3.1	-2.6	-1.0	+5.4	+45	+80	+99	+76	+12	+2.3	+58	+6.7	-0.9	-0.6	+1.4	+1.7	ABI	Dom.	Grain	Grass
43%	35%	45%	72%	67%	68%	65%	61%	48%	50%	56%	57%	58%	59%	53%	51%	+\$104	+\$106	+\$105	+\$103

Traits Observed: CE,BWT,200WT,400WT,FAT,EMA,IMF

**Notes:** Typical Evidently J081 son, soft slick skin with a great carcass shape. Three maternal brothers G96, H560 & J524 have sold previous Bowen bull sales.

**EBV's rated within the breed top 10% R.B.Y & top 20% EMA.**

Purchaser: ..... \$ .....

# LOT 96

## PEAKES BOWEN LAD L637 HBR EVTL637

Born: 6/08/2015

AMFU, NHFU, CAFU, DDFU, RDC

23MTHS

Tattoo: L637

WAIMATA LAD C78  
 WAIMATA E230  
 WAIMATA H920

**SIRE: NJWE158 MILWILLAH LAD E158 (AI)**

C A FUTURE DIRECTION 5321  
 TE MANIA MITTAGONG X114 (AI)  
 TE MANIA MITTAGONG V1 (AI) (ET)

TE MANIA UNLIMITED U3271 (AI) (ET)  
 HIGHLANDER OF STERN AB (ET)  
 STERN 2664

**DAM: EVTF19 PEAKES MONICA F19 (AI)**

CONNELLY LEAD ON  
 N.E.D MONICA A1 (AI)  
 KANSAS MONICA Y74 (AI)

### MID-MAY 2017 ANGUS AUSTRALIA BREEDPLAN

CE	CEM	GL	BW	200d	400d	600d	Mcw	Milk	SS	CWT	EMA	Rib	Rump	RBY	IMF	SELECTION INDEXES			
-1.3	-4.7	-4.2	+5.8	+39	+73	+97	+91	+14	+1.8	+50	+6.5	-2.3	-2.8	+1.6	+1.9	ABI	Dom.	Grain	Grass
47%	41%	63%	64%	66%	68%	66%	61%	54%	56%	60%	60%	61%	61%	57%	56%	+\$102	+\$99	+\$112	+\$97

Traits Observed: CE,200WT,400WT,FAT,EMA,IMF

**Notes:** Deep bodied Lad E158 son with a high content of New Zealand bloodlines in his pedigree. Would be ideal for the feeder steer producer. Maternal half brother J654 sold in 2015 Bowen bull sale.

**EBV's rated within the breed top 10% RBY, top 20% EMA.**

Purchaser: ..... \$ .....

**LOT 97****PEAKES BOWEN REGENT L575 HBR EVTL575****23MTHS**

Born: 6/08/2015

AMFU, NHFU, CAFU, DDFU,

Tattoo: L575

RENNYLEA XPONENTIAL X555 (AI) (ET)

TE MANIA AMBASSADOR A134 (AI)

TE MANIA LOWAN Y211 (ACR) (AI)

**SIRE: BNAD145 TUWHARETOA REGENT D145 (AI) (ET)**

YTHANBRAE HENRY VIII U8 (AI) (ET)

LAWSONS HENRY VIII Y5 (AI)

YTHANBRAE DIRECTION T270 (AI)

TE MANIA UNLIMITED U3271 (AI) (ET)

TE MANIA INFINITY 04 379 AB

TE MANIA 95102

**DAM: EVTF103 PEAKES HEART F103 (AI)**

B T ULTRAVOX 297E

PEAKES HEART D57 (AI)

BOWEN HEART T6

**MID-MAY 2017 ANGUS AUSTRALIA BREEDPLAN**

CED	CEM	GL	BW	200d	400d	600d	Mcw	Milk	SS	CWT	EMA	Rib	Rump	RBV	IMF	SELECTION INDEXES			
-4.8	-7.7	-1.9	+5.0	+46	+79	+105	+95	+13	+1.7	+64	+3.9	+1.7	+1.4	-1.9	+3.4	ABI	Dom.	Grain	Grass
58%	56%	66%	73%	69%	70%	69%	65%	61%	60%	64%	64%	64%	65%	62%	61%	+\$98	+\$87	+\$110	+\$92

Traits Observed: CE,BWT,200WT,400WT,FAT,EMA,IMF

**Notes:** The Regent crossed with Infinity has produced a strong upstanding sire with his marbling double the breed average. Maternal half brothers J525 & K529 sold in 2015 & 2016 Bowen bull sales.

**EBV's rated within the breed top 5% IMF, top 10% rib & Rump fats, top 25% Carcass wt.**

Purchaser: ..... \$ .....

**LOT 98****PEAKES BOWEN REGENT L745 HBR EVTL745****22MTHS**

Born: 8/10/2015

AMFU, NHFU, CAFU, DDF,

Tattoo: L745

RENNYLEA XPONENTIAL X555 (AI) (ET)

TE MANIA AMBASSADOR A134 (AI)

TE MANIA LOWAN Y211 (ACR) (AI)

**SIRE: BNAD145 TUWHARETOA REGENT D145 (AI) (ET)**

YTHANBRAE HENRY VIII U8 (AI) (ET)

LAWSONS HENRY VIII Y5 (AI)

YTHANBRAE DIRECTION T270 (AI)

GLENOCH MEGAFORCE+92 (AI)

BOWEN MEGA SON Z43 (AI) (ET)

MILLAH MURRAH HELEN P134 (AI)

**DAM: EVTE115 PEAKES LEAH E115**

CONNEALY LEAD ON

BOWEN LEAH Z11 (AI)

KANSAS LEAH S50 (AI)

**MID-MAY 2017 ANGUS AUSTRALIA BREEDPLAN**

CED	CEM	GL	BW	200d	400d	600d	Mcw	Milk	SS	CWT	EMA	Rib	Rump	RBV	IMF	SELECTION INDEXES			
-3.9	-9.6	-2.5	+4.8	+44	+81	+107	+90	+16	+1.3	+69	+5.1	+1.0	+0.2	-0.8	+2.7	ABI	Dom.	Grain	Grass
55%	53%	58%	72%	68%	68%	68%	66%	59%	57%	62%	62%	63%	64%	60%	59%	+\$102	+\$91	+\$111	+\$96

Traits Observed: CE,BWT,200WT,400WT,FAT,EMA,IMF

**Notes:** Long, slick skinned son of Regent D145, maternal brothers J559 & K574 sold in the 2015 & 2016 Bowen bull sales.

**EBV's rated within the breed top 10% Carc.wt, top 15% IMF & top 20% rib fat.**

Purchaser: ..... \$ .....

**LOT 99****PEAKES BOWEN EDMUND L652 HBR EVTL652****23MTHS**

Born: 18/08/2015

AMFU, NHFU, CAFU, DDFU,

Tattoo: L652

BOOROOMOOKA UNDERTAKEN U170 (AI)  
 BOOROOMOOKA UNDERTAKEN Y145  
 BOOROOMOOKA UAAISE U101 (AI)  
**SIRE: NORE11 RENNYLEA EDMUND E11 (AI) (ET)**  
 YTHANBRAE HENRY VIII U8 (AI) (ET)  
 LAWSONS HENRY VIII Y5 (AI)  
 YTHANBRAE DIRECTION T270 (AI)

HOFF HI SPADE S C 491  
 S V F HI ROAD  
 LADY BLACKBIRD 111 G D A R  
**DAM: EVTC65 PEAKES DIANA C65 (AI) (ET)**  
 G T MAXIMUM  
 ABBARINGA DIANA N2+93 (AI) (ET)  
 BACK TRACK DIANA 191

**MID-MAY 2017 ANGUS AUSTRALIA BREEDPLAN**

CED	CEM	GL	BW	200d	400d	600d	Mcw	Milk	SS	CWT	EMA	Rib	Rump	RBV	IMF	SELECTION INDEXES			
+2.3	-1.1	-5.3	+3.7	+45	+87	+115	+115	+15	+1.7	+67	+3.8	+0.7	-0.7	-0.1	+2.5	ABI	Dom.	Grain	Grass
58%	53%	62%	74%	70%	71%	69%	67%	62%	60%	64%	63%	64%	65%	61%	60%	+\$124	+\$111	+\$140	+\$116

Traits Observed: CE,BWT,200WT,400WT,FAT,EMA,IMF

**Notes:** Attractive Edmund son with the profit making combination of calving ease & high marbling traits. Maternal brother J554 sold in 2015 Bowen Bull Sale.

**EBV's rated within the breed top 10% mat.cow wt, top 15% carc.wt & Heavy grain index, top 20% Gest.L, 400d, 600d, IMF & Angus breeding index, top 25% Rib fat & Domestic Index.**

Purchaser: ..... \$ .....

**LOT 100****PEAKES BOWEN FUSSION L639 HBR EVTL639****23MTHS**

Born: 7/08/2015

AMFU, NHFU, CAFU, DDF,

Tattoo: L639

S A V FINAL ANSWER 0035  
 S A V PIONEER 7301  
 S A V BLACKBIRD 5297  
**SIRE: QPDF33 BULLIAC FUSION F33 (AI)**  
 B/R NEW FRONTIER 095  
 BULLIAC LORNA A1 (AI) (ET)  
 BULLIAC LORNA U1 (AI)

B T ULTRAVOX 297E  
 MILWILLAH ULTRAVOX B100 (AI)  
 TE MANIA JEDDA X66 (AI) (ET)  
**DAM: EVTG126 PEAKES NUMERAL G126**  
 MILLAH MURRAH NEW DESIGN U68 (AI)  
 BOWEN NUMERAL X19  
 BOWEN NUMERAL S22

**MID-MAY 2017 ANGUS AUSTRALIA BREEDPLAN**

CED	CEM	GL	BW	200d	400d	600d	Mcw	Milk	SS	CWT	EMA	Rib	Rump	RBV	IMF	SELECTION INDEXES			
-1.2	+1.4	-2.4	+5.6	+49	+83	+108	+92	+13	+2.3	+64	+7.6	-0.3	-2.2	+1.5	+1.4	ABI	Dom.	Grain	Grass
42%	34%	55%	73%	67%	67%	66%	61%	49%	52%	56%	57%	58%	59%	53%	52%	+\$104	+\$106	+\$103	+\$105

Traits Observed: CE,BWT,200WT,400WT,FAT,EMA,IMF

**Notes:** Deep bodied Fusion son with excellent EMA.

**EBV's rated within the breed top 10% EMA & RBV, top 15% Birth wt, top 20% scrotal, top 25% car cwt.**

Purchaser: ..... \$ .....

**LOT 101****PEAKES BOWEN EDMUND L722 (AI) HBR EVTL722 25MTHS**

Born: 8/06/2015

AMFU, NHFU, CAFU, DDFU,

Tattoo: L722

BOOROOMOOKA UNDERTAKEN U170 (AI)  
 BOOROOMOOKA UNDERTAKEN Y145  
 BOOROOMOOKA UAAISE U101 (AI)  
**SIRE: NORE11 RENNYLEA EDMUND E11 (AI) (ET)**  
 YTHANBRAE HENRY VIII U8 (AI) (ET)  
 LAWSONS HENRY VIII Y5 (AI)  
 YTHANBRAE DIRECTION T270 (AI)

B C MARATHON 7022 (ET)  
 BULLIAC DE CASTELLA D1 (AI)  
 BULLIAC LORNA A1 (AI) (ET)  
**DAM: EVTH657 PEAKES NUMERAL H657**  
 SUMMITCREST POWER PLAY M032 (IMP USA)  
 BOWEN NUMERAL W3 (AI)  
 BOWEN NUMERAL T11 (AI)

**MID-MAY 2017 ANGUS AUSTRALIA BREEDPLAN**

CED	CEM	GL	BW	200d	400d	600d	Mcw	Milk	SS	CWT	EMA	Rib	Rump	RBV	IMF	SELECTION INDEXES			
+3.3	+1.4	-6.8	+3.7	+39	+66	+87	+77	+10	+1.4	+51	+4.8	+3.3	+2.8	-1.0	+2.3	ABI	Dom.	Grain	Grass
55%	50%	81%	73%	68%	68%	66%	63%	57%	58%	61%	61%	61%	62%	58%	57%	+\$111	+\$102	+\$114	+\$107

Traits Observed: GL,CE,BWT,200WT,400WT,FAT,EMA,IMF

**Notes:** If you are after a heifer bull this fellow ticks the box. The birthmark on his back leg may make him a bargain.**EBV's rated within the breed top 1% rib fat, top 5% rump fat, top 10% Gest. L, top 25% IMF.**

Purchaser: ..... \$ .....

**LOT 102****PEAKES BOWEN LAD L558 HBR EVTL558****22MTHS**

Born: 12/09/2015

AMFU, NHFU, CAFU, DDF, RDF

Tattoo: L558

WAIMATA LAD C78  
 WAIMATA E230  
 WAIMATA H920  
**SIRE: NJWE158 MILWILLAH LAD E158 (AI)**  
 C A FUTURE DIRECTION 5321  
 TE MANIA MITTAGONG X114 (AI)  
 TE MANIA MITTAGONG V1 (AI) (ET)

YTHANBRAE HENRY VIII U8 (AI) (ET)  
 N.E.D HENRY VIII Z3 (AI)  
 KANSAS MONICA W67 (AI)  
**DAM: EVTD1 PEAKES NUMERAL D1**  
 MILLAH MURRAH NEW DESIGN U68 (AI)  
 BOWEN NUMERAL X19  
 BOWEN NUMERAL S22

**MID-MAY 2017 ANGUS AUSTRALIA BREEDPLAN**

CED	CEM	GL	BW	200d	400d	600d	Mcw	Milk	SS	CWT	EMA	Rib	Rump	RBV	IMF	SELECTION INDEXES			
-0.9	-2.8	-5.0	+6.6	+43	+81	+108	+97	+11	+1.8	+58	+6.8	-2.7	-4.2	+2.2	+1.9	ABI	Dom.	Grain	Grass
44%	37%	55%	64%	66%	67%	65%	59%	53%	54%	58%	59%	60%	60%	55%	54%	+\$111	+\$107	+\$125	+\$106

Traits Observed: CE,200WT,400WT,FAT,EMA,IMF

**Notes:** Free moving well structured Lad son. Maternal brother J533 sold in the 2015 Bowen Bull Sale.**EBV's rated within the breed top 1% RBV & 15% EMA.**

Purchaser: ..... \$ .....

**LOT 103****PEAKES BOWEN BARTEL L585 HBR EVTL585****23MTHS**

Born: 2/08/2015

AMFU, NHC, CAFU, DDFU,

Tattoo: L585

B/R NEW DIMENSION 7127  
 TE MANIA BARTEL B219 (AI) (ET)  
 TE MANIA JEDDA W85 (AI) (ET)  
**SIRE: EVTH571 PEAKES BARTEL H571 (AI)**  
 MILLAH MURRAH NEW DESIGN U68 (AI)  
 BOWEN ABIGAIL X13  
 BOWEN ABIGAIL S7 (AI) (ET)

C A FUTURE DIRECTION 5321  
 ARDROSSAN DIRECTION W109 (AI) (ET)  
 ARDROSSAN WILCOOLA Q71 (AI) (ET)  
**DAM: EVTC28 PEAKES ABIGAIL C28 (AI)**  
 BASIN MAX 602C  
 BOWEN ABIGAIL Z16 (AI)  
 ABERDONIAN ABIGAIL R8 (AI) (ET)

**MID-MAY 2017 ANGUS AUSTRALIA BREEDPLAN**

CED	CEM	GL	BW	200d	400d	600d	Mcw	Milk	SS	CWT	EMA	Rib	Rump	RBV	IMF	SELECTION INDEXES			
-2.0	-1.4	-4.0	+4.3	+39	+69	+86	+73	+13	+1.9	+55	+5.9	+0.3	+0.4	+0.2	+1.9	ABI	Dom.	Grain	Grass
43%	39%	56%	70%	65%	66%	64%	59%	50%	53%	55%	56%	56%	58%	53%	50%	+\$93	+\$95	+\$93	+\$92

Traits Observed: CE,BWT,200WT,400WT,FAT,EMA,IMF

**Notes:** A cross of popular sires Bartel & Direction W109. Abigail C28 is a top W109 daughter. Maternal half brothers E76, H613 & J572 sold in previous Bowen Bull Sales.

Purchaser: ..... \$ .....

# LOT 104

## PEAKES BOWEN REGENT L514 HBR EVTL514

22MTHS

Born: 1/09/2015

AMFU, NHFU, CAFU, DDFU,

Tattoo: L514

RENNYLEA XPONENTIAL X555 (AI) (ET)  
TE MANIA AMBASSADOR A134 (AI)  
TE MANIA LOWAN Y211 (ACR) (AI)

C A FUTURE DIRECTION 5321  
ARDROSSAN DIRECTION W109 (AI) (ET)  
ARDROSSAN WILCOOLA Q71 (AI) (ET)

**SIRE: BNAD145 TUWHARETOA REGENT D145 (AI) (ET) DAM: EVTC19 PEAKES NAOMI C19 (AI)**

YTHANBRAE HENRY VIII U8 (AI) (ET)  
LAWSONS HENRY VIII Y5 (AI)  
YTHANBRAE DIRECTION T270 (AI)

CIRCLE A 2000 PLUS  
N.E.D NAOMI Y3 (AI) (ET)  
FARRER NAOMI R4 (AI) (ET)

### MID-MAY 2017 ANGUS AUSTRALIA BREEDPLAN

CED	CEM	GL	BW	200d	400d	600d	Mcw	Milk	SS	CWT	EMA	Rib	Rump	RBV	IMF	SELECTION INDEXES			
-2.0	-4.5	-4.2	+5.8	+49	+88	+121	+110	+18	+1.6	+84	+6.4	+1.5	+1.0	-1.2	+2.7	ABI	Dom.	Grain	Grass
59%	57%	66%	66%	69%	70%	69%	67%	64%	61%	65%	65%	66%	66%	63%	62%	+\$123	+\$102	+\$136	+\$115

Traits Observed: CE,200WT,400WT,FAT,EMA,IMF

**Notes:** A very easy doing type of sire with volume & depth. Maternal half brother K595 sold in 2016 Bowen Bull Sale.

**EBV's rated within the breed top 1% carc.wt, top 10% 600d & , mat.cow wt & Rib fat. Top 15% 200,400d & IMF, top 20% milk, EMA, Rump Fat, Indexes ABI & H.Grain & top 25% H.Grass.**

Purchaser: ..... \$ .....

# LOT 105

## PEAKES BOWEN ELSOM L572 (AI) HBR EVTL572

23MTHS

Born: 6/08/2015

AMFU, NHFU, CAFU, DDFU,

Tattoo: L572

ARDROSSAN EQUATOR A241 (AI) (ET)  
MILWILLAH ELSOM F189 (AI)  
MILWILLAH MOONGARA D123

S A F FOCUS OF E R  
MYTTY IN FOCUS  
MYTTY COUNTESS 906

**SIRE: NJWH283 MILWILLAH ELSOM H283**

**DAM: EVTH545 PEAKES NUMERAL H545 (AI)**

TE MANIA UNLIMITED U3271 (AI) (ET)  
MILWILLAH BARUNAH E51 (AI) (ET)  
TE MANIA BARUNAH X46 (AI) (ET)

MILWILLAH ULTRAVOX B100 (AI)  
PEAKES NUMERAL E18  
BOWEN NUMERAL S22

### MID-MAY 2017 ANGUS AUSTRALIA BREEDPLAN

CED	CEM	GL	BW	200d	400d	600d	Mcw	Milk	SS	CWT	EMA	Rib	Rump	RBV	IMF	SELECTION INDEXES			
+3.9	+2.0	-4.2	+2.9	+42	+76	+97	+76	+13	+2.0	+54	+3.8	+0.9	+0.4	+0.1	+1.6	ABI	Dom.	Grain	Grass
29%	26%	80%	65%	57%	58%	54%	50%	33%	32%	45%	47%	47%	49%	43%	39%	+\$96	+\$102	+\$90	+\$100

Traits Observed: GL,BWT,200WT,400WT,FAT,EMA,IMF

**Notes:** Low birth weight, his sire Elsom H283 had a magnificent profile, flawless structure & some of breeds top matrons at the front of his pedigree.

**EBV's rated within the breed top 15% birth wt. & top 20% rib fat.**

Purchaser: ..... \$ .....

# LOT 106

## PEAKES BOWEN IN FOCUS L659 (AI) HBR EVTL659 23MTHS

Born: 9/08/2015

AMFU, NHFU, CAFU, DDFU, RDC

Tattoo: L659

S A F FOCUS OF E R  
MYTTY IN FOCUS  
MYTTY COUNTESS 906

WAIMATA E230  
MILWILLAH LAD E158 (AI)  
TE MANIA MITTAGONG X114 (AI)

**SIRE: NJWB115 MILWILLAH IN FOCUS B115 (AI)**

**DAM: EVTH582 PEAKES DIANA H582**

TE MANIA ULONG U41 (AI) (ET)  
MILWILLAH BARUNAH Z18 (AI)  
TE MANIA BARUNAH X46 (AI) (ET)

BT RIGHT TIME 24J  
PEAKES DIANA E113 (AI)  
ABBARINGA DIANA N2+93 (AI) (ET)

### MID-MAY 2017 ANGUS AUSTRALIA BREEDPLAN

CED	CEM	GL	BW	200d	400d	600d	Mcw	Milk	SS	CWT	EMA	Rib	Rump	RBV	IMF	SELECTION INDEXES			
+2.3	-1.0	-4.9	+4.4	+43	+78	+106	+96	+17	+1.4	+54	+5.1	+1.4	+1.3	-0.4	+1.7	ABI	Dom.	Grain	Grass
48%	42%	59%	73%	68%	68%	67%	63%	55%	55%	58%	59%	60%	60%	56%	54%	+\$111	+\$102	+\$112	+\$109

Traits Observed: CE,BWT,200WT,400WT,FAT,EMA,IMF

**Notes:** Sired by In Focus B115, suitable for heifers.

**EBV's rated within the breed top 10% rib fat, top 15% rump fat & top 25% milk.**

Purchaser: ..... \$ .....

# LOT 107

## PEAKES BOWEN REGENT L581 HBR EVTL581

23MTHS

Born: 7/08/2015

AMFU, NHF, CAFU, DDF,

Tattoo: L581

RENNYLEA XPONENTIAL X555 (AI) (ET)  
TE MANIA AMBASSADOR A134 (AI)  
TE MANIA LOWAN Y211 (ACR) (AI)

C A FUTURE DIRECTION 5321  
ARDROSSAN DIRECTION W109 (AI) (ET)  
ARDROSSAN WILCOOLA Q71 (AI) (ET)

**SIRE: BNAD145 TUWHARETOA REGENT D145 (AI) (ET)**

**DAM: EVTD32 PEAKES ABIGAIL D32 (AI)**

YTHANBRAE HENRY VIII U8 (AI) (ET)  
LAWSONS HENRY VIII Y5 (AI)  
YTHANBRAE DIRECTION T270 (AI)

MILLAH MURRAH NEW DESIGN U68 (AI)  
BOWEN ABIGAIL X13  
BOWEN ABIGAIL S7 (AI) (ET)

### MID-MAY 2017 ANGUS AUSTRALIA BREEDPLAN

CED	CEM	GL	BW	200d	400d	600d	Mcw	Milk	SS	CWT	EMA	Rib	Rump	RBV	IMF	SELECTION INDEXES			
-1.9	-4.1	-3.8	+5.2	+45	+80	+110	+104	+18	+2.1	+75	+5.8	+0.8	-0.6	-0.2	+3.0	ABI	Dom.	Grain	Grass
59%	57%	67%	75%	71%	71%	70%	68%	63%	61%	65%	64%	64%	65%	62%	61%	+\$114	+\$99	+\$130	+\$105

Traits Observed: CE,BWT,200WT,400WT,FAT,EMA,IMF

**Notes:** This Regent son looks a very similar type to his dam, deep bodied & always in good condition. Maternal half brother F48 sold in 2012 Bowen Bull Sale.

**EBV's rated within the breed top 5% carc. wt, top 10% IMF, top 20% mat.cow wt. & milk, top 25% 600d,scrotal, Rib fat & heavy grass Index**

Purchaser: ..... \$ .....

# LOT 108

## PEAKES BOWEN FUSION L583 HBR EVTL583

23MTHS

Born: 27/07/2015

AMFU, NHFU, CAFU, DDFU,

Tattoo: L583

S A V FINAL ANSWER 0035  
S A V PIONEER 7301  
S A V BLACKBIRD 5297

HOFF ULTRA S C 108  
DSK HU X-TRA STRENGTH X4 (AI) (ET)  
DSK PM PANDA R3

**SIRE: QPDF33 BULLIAC FUSION F33 (AI)**

**DAM: BPKB44 BOWEN ABIGAIL B44**

B/R NEW FRONTIER 095  
BULLIAC LORNA A1 (AI) (ET)  
BULLIAC LORNA U1 (AI)

G A R SLEEP EASY 1009  
BOWEN ABIGAIL S6 (AI) (ET)  
CALLEN ABIGAIL K58+90 (AI)

### MID-MAY 2017 ANGUS AUSTRALIA BREEDPLAN

CED	CEM	GL	BW	200d	400d	600d	Mcw	Milk	SS	CWT	EMA	Rib	Rump	RBV	IMF	SELECTION INDEXES			
-0.6	+2.6	-3.3	+5.0	+41	+69	+92	+90	+9	+1.2	+56	+5.7	-0.2	-1.2	+0.9	+1.3	ABI	Dom.	Grain	Grass
44%	36%	54%	73%	67%	67%	66%	61%	52%	53%	56%	57%	58%	59%	54%	52%	+\$91	+\$95	+\$88	+\$93

Traits Observed: CE,BWT,200WT,400WT,FAT,EMA,IMF

**Notes:** Soft loose skinned growthy Fusion son, Dam Abigail B44 is a big strong cow.

**EBV's rated within the breed top 15% calving ease dtrs. & top 25% RBV.**

Purchaser: ..... \$ .....

# LOT 109

## PEAKES BOWEN LAD L542 HBR EVTL542

23MTHS

Born: 16/08/2015

AMFU, NHFU, CAFU, DDF,

Tattoo: L542

WAIMATA LAD C78  
WAIMATA E230  
WAIMATA H920

TWIN VALLEY PRECISION E161  
BR MIDLAND  
BR ROYAL LASS 7036-19

**SIRE: NJWE158 MILWILLAH LAD E158 (AI)**

**DAM: EVTF117 PEAKES BOWEN LULU F117 (AI) (ET)**

C A FUTURE DIRECTION 5321  
TE MANIA MITTAGONG X114 (AI)  
TE MANIA MITTAGONG V1 (AI) (ET)

WHITESTONE WIDESPREAD MB  
BOWEN LULU W27 (AI)  
ABERDONIAN LULU R13 (AI) (ET)

### MID-MAY 2017 ANGUS AUSTRALIA BREEDPLAN

CED	CEM	GL	BW	200d	400d	600d	Mcw	Milk	SS	CWT	EMA	Rib	Rump	RBV	IMF	SELECTION INDEXES			
+0.1	-1.0	-7.8	+5.8	+44	+80	+106	+108	+10	+1.4	+60	+7.0	-0.8	-0.9	+0.7	+1.8	ABI	Dom.	Grain	Grass
48%	41%	59%	73%	68%	69%	67%	63%	54%	55%	60%	60%	60%	61%	56%	56%	+\$111	+\$105	+\$119	+\$107

Traits Observed: CE,BWT,200WT,400WT,FAT,EMA,IMF

**Notes:** The Lad progeny have outstanding early growth, their structure and mobility are excellent. Maternal half brother sold in 2015 Bowen Bull Sale.

**EBV's rated within the breed top 5% short gestation & top 15% EMA.**

Purchaser: ..... \$ .....

**LOT 110****PEAKES BOWEN EVIDENTLY L518 HBR EVTL518****23MTHS**

Born: 13/08/2015

AMFU, NHFU, CAFU, DDFU,

Tattoo: L518

TE MANIA BARTEL B219 (AI) (ET)  
 DUNOON EVIDENT E614 (AI) (ET)  
 DUNOON ELSA B681

**SIRE: NKLJ81 KANSAS EVIDENTLY J81 (AI)**

B C MARATHON 7022 (ET)  
 KANSAS ANNIE E109 (AI) (ET)  
 KANSAS ANNIE X164 (AI) (ET)

B T ULTRAVOX 297E  
 MILWILLAH ULTRAVOX B100 (AI)  
 TE MANIA JEDDA X66 (AI) (ET)

**DAM: EVTE42 PEAKES PRIMROSE E42**

SUMMITCREST POWER PLAY M032 (IMP USA)  
 BOWEN PRIMROSE W22 (AI)  
 BOWEN PRIMROSE T9 (AI)

**MID-MAY 2017 ANGUS AUSTRALIA BREEDPLAN**

CED	CEM	GL	BW	200d	400d	600d	Mcw	Milk	SS	CWT	EMA	Rib	Rump	RBY	IMF	SELECTION INDEXES			
-3.4	-3.4	+0.5	+5.6	+43	+73	+95	+82	+13	+2.6	+50	+5.7	-1.0	-0.5	+1.1	+1.6	ABI	Dom.	Grain	Grass
43%	35%	47%	73%	67%	68%	65%	61%	47%	50%	56%	57%	58%	59%	53%	51%	+\$87	+\$92	+\$84	+\$89

Traits Observed: CE,BWT,200WT,400WT,FAT,EMA,IMF

**Notes:** Free moving long bodied Evidently J81 son with slick skin. Maternal half brothers H532 & K566 sold at the 2014 & 2016 Bowen Bull Sales.

**EBV's rated within the breed top 10% scrotal & top 15% for RBY.**

Purchaser: ..... \$ .....

**LOT 111****PEAKES BOWEN LAD L554 HBR EVTL554****23MTHS**

Born: 11/08/2015

AMFU, NHFU, CAFU, DDFU, RDC

Tattoo: L554

WAIMATA LAD C78  
 WAIMATA E230  
 WAIMATA H920

**SIRE: NJWE158 MILWILLAH LAD E158 (AI)**

C A FUTURE DIRECTION 5321  
 TE MANIA MITTAGONG X114 (AI)  
 TE MANIA MITTAGONG V1 (AI) (ET)

G T MAXIMUM  
 BASIN MAX 602C  
 BASIN ELINE ERICA 315U

**DAM: BPKB2 BOWEN NUMERAL B2 (AI)**

C A FUTURE DIRECTION 5321  
 BOWEN NUMERAL X24 (AI)  
 BOWEN NUMERAL T11 (AI)

**MID-MAY 2017 ANGUS AUSTRALIA BREEDPLAN**

CED	CEM	GL	BW	200d	400d	600d	Mcw	Milk	SS	CWT	EMA	Rib	Rump	RBY	IMF	SELECTION INDEXES			
-0.7	-2.8	-6.3	+5.4	+41	+78	+102	+101	+12	+1.5	+57	+6.0	-1.4	-2.5	+1.0	+1.7	ABI	Dom.	Grain	Grass
49%	42%	64%	74%	69%	70%	69%	64%	57%	57%	62%	62%	62%	63%	58%	57%	+\$95	+\$97	+\$100	+\$94

Traits Observed: CE,BWT,200WT,400WT,FAT,EMA,IMF

**Notes:** A very attractive Lad E158 son, the Lad sons consistently show athleticism & soundness, the type that will have longevity. Maternal half brothers sold at previous Bowen Bull Sales F23, G116, H622 & K634.

**EBV's rated within the breed top 10% short gestation, top 20% mat.cow wt. & RBY, top 25% EMA.**

Purchaser: ..... \$ .....

**LOT 112 PEAKES BOWEN LAD L633 HBR EVTL633 23MTHS**  
 Born: 4/08/2015 AMFU, NHC, CAFU, DDF, RDF Tattoo: L633

WAIMATA LAD C78 ARDROSSAN DIRECTION W109 (AI) (ET)  
 WAIMATA E230 BOWEN DIRECTION B64 (AI)  
 WAIMATA H920 BOWEN ABIGAIL Y13  
**SIRE: NJWE158 MILWILLAH LAD E158 (AI)** **DAM: EVTD20 PEAKES TENTURA D20**  
 C A FUTURE DIRECTION 5321 DSK HU X-TRA STRENGTH X4 (AI) (ET)  
 TE MANIA MITTAGONG X114 (AI) BOWEN TENTURA B28  
 TE MANIA MITTAGONG V1 (AI) (ET) BOWEN TENTURA X38 (AI)

**MID-MAY 2017 ANGUS AUSTRALIA BREEDPLAN**

CED	CEM	GL	BW	200d	400d	600d	Mcw	Milk	SS	CWT	EMA	Rib	Rump	RBV	IMF	SELECTION INDEXES			
+1.0	-2.1	-6.7	+5.0	+37	+73	+96	+92	+13	+1.7	+52	+6.0	-2.1	-3.2	+1.7	+1.6	ABI	Dom.	Grain	Grass
44%	37%	57%	73%	68%	68%	67%	63%	54%	53%	59%	59%	61%	61%	56%	55%	+\$100	+\$101	+\$107	+\$97

Traits Observed: CE,BWT,200WT,400WT,FAT,EMA,IMF

**Notes:** Another Lad E158 with the signature softness & depth.  
**EBV's rated within the breed top 10% Gestation Length & RBV, top 25% EMA.**

Purchaser: ..... \$ .....

**LOT 113 PEAKES BOWEN LAD L551 HBR EVTL551 23MTHS**  
 Born: 26/07/2015 AMFU, NHC, CAFU, DDFU, RDF Tattoo: L551

WAIMATA LAD C78 C A FUTURE DIRECTION 5321  
 WAIMATA E230 ARDROSSAN DIRECTION W109 (AI) (ET)  
 WAIMATA H920 ARDROSSAN WILCOOLA Q71 (AI) (ET)  
**SIRE: NJWE158 MILWILLAH LAD E158 (AI)** **DAM: EVTE24 PEAKES ABIGAIL E24 (AI)**  
 C A FUTURE DIRECTION 5321 BASIN MAX 602C  
 TE MANIA MITTAGONG X114 (AI) BOWEN ABIGAIL Z16 (AI)  
 TE MANIA MITTAGONG V1 (AI) (ET) ABERDONIAN ABIGAIL R8 (AI) (ET)

**MID-MAY 2017 ANGUS AUSTRALIA BREEDPLAN**

CED	CEM	GL	BW	200d	400d	600d	Mcw	Milk	SS	CWT	EMA	Rib	Rump	RBV	IMF	SELECTION INDEXES			
+1.2	-1.7	-7.2	+4.9	+38	+70	+95	+91	+12	+0.9	+52	+5.8	-1.3	-2.6	+1.2	+1.5	ABI	Dom.	Grain	Grass
48%	43%	64%	74%	69%	70%	68%	64%	56%	57%	61%	62%	63%	63%	58%	58%	+\$94	+\$95	+\$96	+\$94

Traits Observed: CE,BWT,200WT,400WT,FAT,EMA,IMF

**Notes:** The Lad E158 x Direction W109 has been an exceptional cross for us. Full brother H584 sold 2014, K543 half brother sold 2016 Bowen bull sales.  
**EBV's rated within the breed top 5% short gestation & top 15% RBV.**

Purchaser: ..... \$ .....

**LOT 114 PEAKES BOWEN REGENT L503 HBR EVTL503 23MTHS**  
 Born: 12/08/2015 AMFU, NHF, CAFU, DDFU, Tattoo: L503

RENNYLEA XPONENTIAL X555 (AI) (ET) C A FUTURE DIRECTION 5321  
 TE MANIA AMBASSADOR A134 (AI) ARDROSSAN DIRECTION W109 (AI) (ET)  
 TE MANIA LOWAN Y211 (ACR) (AI) ARDROSSAN WILCOOLA Q71 (AI) (ET)  
**SIRE: BNAD145 TUWHARETOA REGENT D145 (AI) (ET)** **DAM: EVTD61 PEAKES LEAH D61 (AI)**  
 YTHANBRAE HENRY VIII U8 (AI) (ET) CONNEALY LEAD ON  
 LAWSONS HENRY VIII Y5 (AI) BOWEN LEAH Z11 (AI)  
 YTHANBRAE DIRECTION T270 (AI) KANSAS LEAH S50 (AI)

**MID-MAY 2017 ANGUS AUSTRALIA BREEDPLAN**

CED	CEM	GL	BW	200d	400d	600d	Mcw	Milk	SS	CWT	EMA	Rib	Rump	RBV	IMF	SELECTION INDEXES			
-5.3	-7.2	-1.0	+6.5	+46	+84	+114	+102	+16	+1.9	+76	+6.0	+0.1	-0.7	-0.2	+2.7	ABI	Dom.	Grain	Grass
59%	57%	67%	75%	69%	69%	68%	68%	63%	60%	64%	63%	63%	64%	62%	61%	+\$111	+\$95	+\$126	+\$102

Traits Observed: CE,BWT,200WT,400WT,FAT,EMA,IMF

**Notes:** Long bodied, sound Regent D145 son. Maternal half brothers J671 & K569 sold at 2015 & 2016 Bowen bull sales.  
**EBV's rated within the breed top 5% carc.wt, top 15% IMF, top 20% 600d, Mat.cow wt. & top 25% 400d & EMA.**

Purchaser: ..... \$ .....

**LOT 115****PEAKES BOWEN OUTLIER L709 (AI) HBR EVTL709 25MTHS**

Born: 14/06/2015

AMFU, NHFU, CAFU, DDF, RDF

Tattoo: L709

SCHURRTOP REALITY X723  
MATAURI REALITY 839  
MATAURI 06663**SIRE: NZE14647010F031 MATAURI OUTLIER F031**  
KAROO W109 DIRECTION Z181  
MATAURI 08860  
MATAURI 105583MYTTY IN FOCUS  
MILWILLAH IN FOCUS B115 (AI)  
MILWILLAH BARUNAH Z18 (AI)  
**DAM: EVTH522 PEAKES HEART H522**  
BULLIAC DE CASTELLA D1 (AI)  
PEAKES HEART F3  
BOWEN HEART B10**MID-MAY 2017 ANGUS AUSTRALIA BREEDPLAN**

CED	CEM	GL	BW	200d	400d	600d	Mcw	Milk	SS	CWT	EMA	Rib	Rump	RBV	IMF	SELECTION INDEXES			
+1.4	+1.6	-3.3	+5.1	+49	+87	+115	+105	+16	+2.0	+62	+3.1	-0.1	-0.5	+0.3	+1.6	ABI	Dom.	Grain	Grass
49%	42%	81%	73%	68%	68%	66%	61%	53%	56%	57%	58%	58%	59%	53%	53%	+\$110	+\$107	+\$113	+\$110

Traits Observed: GL,CE,BWT,200WT,400WT,FAT,EMA,IMF

**Notes:** Outlier L709 excels in growth & weight for age. The outlier progeny have excellent temperament & superb soundness.**EBV's rated within the breed top 15% 200d & mat.cow wt, top 20% 400 & 600d.**

Purchaser: ..... \$ .....

**LOT 116****PEAKES BOWEN REGENT L592 HBR EVTL592 23MTHS**

Born: 1/08/2015

AMFU, NHFU, CAF, DDF,

Tattoo: L592

RENNYLEA XPONENTIAL X555 (AI) (ET)  
TE MANIA AMBASSADOR A134 (AI)  
TE MANIA LOWAN Y211 (ACR) (AI)**SIRE: BNAD145 TUWHARETOA REGENT D145 (AI) (ET)**  
YTHANBRAE HENRY VIII U8 (AI) (ET)  
LAWSONS HENRY VIII Y5 (AI)  
YTHANBRAE DIRECTION T270 (AI)HOFF LIMITED EDITION S C 594  
DSK V6 ACHILLES A116  
DSK PD HOT STUFF R36 (AI) (ET)  
**DAM: EVTD18 PEAKES ABIGAIL D18**  
MILLAH MURRAH NEW DESIGN U68 (AI)  
BOWEN ABIGAIL Y42  
BOWEN ABIGAIL U28 (AI)**MID-MAY 2017 ANGUS AUSTRALIA BREEDPLAN**

CED	CEM	GL	BW	200d	400d	600d	Mcw	Milk	SS	CWT	EMA	Rib	Rump	RBV	IMF	SELECTION INDEXES			
-3.6	-6.3	-2.8	+6.4	+49	+86	+118	+122	+16	+2.0	+79	+4.0	-0.6	-1.5	-0.3	+2.7	ABI	Dom.	Grain	Grass
55%	52%	59%	66%	68%	69%	67%	65%	61%	58%	62%	63%	64%	64%	61%	59%	+\$101	+\$91	+\$116	+\$95

Traits Observed: CE,200WT,400WT,FAT,EMA,IMF

**Notes:** This larger framed Regent son, stands over a lot of ground he has a tonne of length. Maternal half brothers G71 & J662 have sold at previous Bowen Bull Sales.**EBV's rated within the breed top 1 % carc. wt, top 5% Mat.cow wt, top 15% 200d, 600d & IMF, top 20% 400d.**

Purchaser: ..... \$ .....

**LOT 117****PEAKES BOWEN LAD L648 HBR EVTL648 23MTHS**

Born: 18/08/2015

AMFU, NHF, CAFU, DDF, RDC

Tattoo: L648

WAIMATA LAD C78  
WAIMATA E230  
WAIMATA H920**SIRE: NJWE158 MILWILLAH LAD E158 (AI)**  
C A FUTURE DIRECTION 5321  
TE MANIA MITTAGONG X114 (AI)  
TE MANIA MITTAGONG V1 (AI) (ET)B/R NEW DESIGN 036  
KENNY'S CREEK ECLIPSE W111 (AI) (ET)  
IMRAN MISS VEGAS U20 (AI) (ET)  
**DAM: EVTD99 PEAKES PINNACLE D99 (AI)**  
G A R PINNACLE  
LAWSONS PINNACLE X1227 (AI)  
YTHANBRAE PRIME S355 (AI)**MID-MAY 2017 ANGUS AUSTRALIA BREEDPLAN**

CED	CEM	GL	BW	200d	400d	600d	Mcw	Milk	SS	CWT	EMA	Rib	Rump	RBV	IMF	SELECTION INDEXES			
-0.5	-2.0	-5.4	+6.2	+42	+78	+102	+93	+13	+1.4	+56	+6.5	+1.3	+1.0	-0.1	+1.8	ABI	Dom.	Grain	Grass
48%	42%	64%	73%	68%	68%	66%	61%	55%	57%	60%	60%	60%	61%	56%	56%	+\$108	+\$101	+\$111	+\$105

Traits Observed: CE,BWT,200WT,400WT,FAT,EMA,IMF

**Notes:** Attractive Lad son with soft loose skin & a stand out profile. Maternal brother G97 & full brother H666 sold at 2013 & 2014 Bowen bull sales.**EBV's rated within the breed top 15% Rib fat, top 20% Gest.L, EMA & Rump fat.**

Purchaser: ..... \$ .....

**LOT 118****PEAKES BOWEN IN FOCUS L777 (AI) (ET) HBR EVTL777 22MTHS**

Born: 6/09/2015

AMFU, NHFU, CAFU, DDFU, RDF

Tattoo: L777

S A F FOCUS OF E R  
 MYTTY IN FOCUS  
 MYTTY COUNTESS 906  
**SIRE: NJWB115 MILWILLAH IN FOCUS B115 (AI)**  
 TE MANIA ULONG U41 (AI) (ET)  
 MILWILLAH BARUNAH Z18 (AI)  
 TE MANIA BARUNAH X46 (AI) (ET)

B/R DESTINATION 727  
 B/R DESTINATION 727-928  
 B/R BLACKCAP EMPRESS 558  
**DAM: VTMZ461 TE MANIA LOWAN Z461 (AI) (ET)**  
 TE MANIA NORMAN N48+93 (AI) (ET)  
 TE MANIA LOWAN R426 (AI) (ET)  
 TE MANIA LOWAN N72+93

**MID-MAY 2017 ANGUS AUSTRALIA BREEDPLAN**

CE	GE	GL	BW	200d	400d	600d	Mcw	Milk	SS	CWT	EMA	Rib	Rump	RBV	IMF	SELECTION INDEXES			
+3.3	+1.6	-4.5	+4.1	+41	+68	+84	+73	+16	+1.8	+50	+4.4	-0.4	+0.1	+0.2	+2.2	ABI	Dom.	Grain	Grass
54%	48%	64%	73%	66%	65%	66%	65%	62%	60%	58%	56%	58%	57%	55%	55%	+\$104	+\$104	+\$108	+\$100

Traits Observed: BWT,200WT,400WT,FAT,EMA,IMF

**Notes:** Donor dam Lowan Z461 is a very attractive female, this In Focus B115 son is low birth sire suitable for heifers. Half brother J704 retained in Peakes Angus stud, maternal half brother K727 sold at 2016 Bowen bull sale.

Purchaser: ..... \$ .....

**LOT 119****PEAKES BOWEN REALITY L711 (AI) HBR EVTL711 24MTHS**

Born: 1/07/2015

AMFU, NHFU, CAF, DDFU, RDF

Tattoo: L711

SCHURR 77 1346 EXCEL  
 SCHURRTOP REALITY X723  
 SCHURRTOP 8019 V141  
**SIRE: NZE14647008839 MATAURI REALITY 839**  
 TE MANIA ULONG U41 (AI) (ET)  
 MATAURI 06663  
 MATAURI 04456 AB

MYTTY IN FOCUS  
 MILWILLAH IN FOCUS B115 (AI)  
 MILWILLAH BARUNAH Z18 (AI)  
**DAM: EVTH544 PEAKES DIANNA H544**  
 BT RIGHT TIME 24J  
 PEAKES DIANA E8 (AI)  
 N.E.D DIANA Y8 (AI)

**SIRE: MATAURI REALITY 839****MID-MAY 2017 ANGUS AUSTRALIA BREEDPLAN**

CE	GE	GL	BW	200d	400d	600d	Mcw	Milk	SS	CWT	EMA	Rib	Rump	RBV	IMF	SELECTION INDEXES			
+5.7	+4.2	-8.1	+1.7	+39	+74	+92	+74	+16	+2.3	+50	+4.7	+2.7	+3.1	-1.3	+2.3	ABI	Dom.	Grain	Grass
54%	51%	60%	73%	68%	69%	67%	63%	57%	58%	60%	60%	59%	60%	56%	55%	+\$109	+\$106	+\$109	+\$109

Traits Observed: CE,BWT,200WT,400WT,FAT,EMA,IMF

**Notes:** Pedigree combines a double cross of low birth weight & short gestation. Ideal for heifers.

**EBV's rated within the breed top 1% calving ease daughters & rump fat, top 5% Gest.L, Birth wt. & Rib fat, top 20% scrotal, top 25% IMF.**

Purchaser: ..... \$ .....

**LOT 120****PEAKES BOWEN IN FOCUS L687 HBR EVTL687****23MTHS**

Born: 26/07/2015

AMFU, NHFU, CAFU, DDFU, RDF

Tattoo: L687

MYTTY IN FOCUS  
 MILWILLAH IN FOCUS B115 (AI)  
 MILWILLAH BARUNAH Z18 (AI)  
**SIRE: EVTH517 PEAKES IN FOCUS H517 (AI)**  
 ARDROSSAN EQUATOR A241 (AI) (ET)  
 PEAKES BUTTONS F21 (AI)  
 BOWEN BUTTONS Y19

MYTTY IN FOCUS  
 MILWILLAH IN FOCUS B115 (AI)  
 MILWILLAH BARUNAH Z18 (AI)  
**DAM: EVTH546 PEAKES ENNA H546**  
 ARDROSSAN DIRECTION W109 (AI) (ET)  
 PEAKES ENNA E27 (AI)  
 BOWEN ENNA V8

**MID-MAY 2017 ANGUS AUSTRALIA BREEDPLAN**

CED	GEM	GL	BW	200d	400d	600d	Mcw	Milk	SS	CWT	EMA	Rib	Rump	RBY	IMF	SELECTION INDEXES			
+4.6	+2.4	-6.2	+2.2	+35	+50	+71	+68	+15	+1.1	+42	+5.3	+0.0	-0.6	+0.4	+1.5	ABI	Dom.	Grain	Grass
40%	34%	55%	71%	65%	66%	63%	58%	45%	44%	54%	53%	53%	55%	49%	46%	+\$79	+\$84	+\$71	+\$82

Traits Observed: CE,BWT,200WT,400WT,FAT,EMA,IMF

**Notes:** Calving ease sire suitable for heifers.**EBV's rated within the breed top 10% Gestation Length & Birth wt, top 15% calving ease daughters.**

Purchaser: ..... \$ .....

**LOT 121****PEAKES BOWEN OUTLIER L729 (AI) HBR EVTL729****25MTHS**

Born: 18/06/2015

AMFU, NHFU, CAFU, DDF,

Tattoo: L729

SCHURRTOP REALITY X723  
 MATAURI REALITY 839  
 MATAURI 06663  
**SIRE: NZE14647010F031 MATAURI OUTLIER F031**  
 KAROO W109 DIRECTION Z181  
 MATAURI 08860  
 MATAURI 105583

TE MANIA BARTEL B219 (AI) (ET)  
 DUNOON EVIDENT E614 (AI) (ET)  
 DUNOON ELSA B681  
**DAM: EVTH606 PEAKES MONICA H606 (AI)**  
 BT RIGHT TIME 24J  
 PEAKES MONICA E11 (AI)  
 KANSAS MONICA W67 (AI)

**MID-MAY 2017 ANGUS AUSTRALIA BREEDPLAN**

CED	GEM	GL	BW	200d	400d	600d	Mcw	Milk	SS	CWT	EMA	Rib	Rump	RBY	IMF	SELECTION INDEXES			
-4.1	-1.9	-1.4	+6.3	+50	+96	+123	+108	+16	+2.6	+68	+5.0	-0.2	+0.6	+0.3	+1.7	ABI	Dom.	Grain	Grass
51%	45%	82%	73%	64%	63%	64%	61%	53%	57%	54%	53%	55%	54%	51%	52%	+\$114	+\$107	+\$119	+\$112

Traits Observed: GL,CE,BWT,200WT,600WT,FAT,EMA,IMF

**Notes:** Long bodied Outlier son with roundness to his carcass.**EBV's rated within the breed top 5% 400d, top 10% 200d, 600d & scrotal, top 15% mat. cow wt & carcass wt, top 25% rump fat.**

Purchaser: ..... \$ .....



**LOT 122**

**PEAKES BOWEN REGENT L584 HBR EVTL584**

**23MTHS**

Born: 20/08/2015

AMFU, NHFU, CAF, DDF,

Tattoo: L584

RENNYLEA XPONENTIAL X555 (AI) (ET)  
 TE MANIA AMBASSADOR A134 (AI)  
 TE MANIA LOWAN Y211 (ACR) (AI)  
**SIRE: BNAD145 TUWHARETOA REGENT D145 (AI) (ET)**  
 YTHANBRAE HENRY VIII U8 (AI) (ET)  
 LAWSONS HENRY VIII Y5 (AI)  
 YTHANBRAE DIRECTION T270 (AI)

YTHANBRAE HENRY VIII U8 (AI) (ET)  
 N.E.D HENRY VIII Z3 (AI)  
 KANSAS MONICA W67 (AI)  
**DAM: BPKB76 BOWEN NUMERAL B76**  
 MILLAH MURRAH NEW DESIGN U68 (AI)  
 BOWEN NUMERAL Y4  
 BOWEN NUMERAL T11 (AI)



**MID-MAY 2017 ANGUS AUSTRALIA BREEDPLAN**

CE	GE	GL	BW	200d	400d	600d	Mcw	Milk	SS	CWT	EMA	Rib	Rump	RBV	IMF	SELECTION INDEXES			
-1.6	-3.4	-3.0	+4.1	+42	+79	+104	+74	+16	+1.4	+71	+5.9	+0.2	-1.2	-0.3	+3.0	ABI	Dom.	Grain	Grass
57%	55%	63%	75%	71%	71%	70%	68%	64%	60%	64%	64%	65%	66%	63%	61%	+\$115	+\$104	+\$129	+\$107

Traits Observed: CE,BWT,200WT,400WT,FAT,EMA,IMF

**Notes:** Soft smooth Regent D145 son. Maternal half brothers D65 & F62 sold in the 2010 & 2012 Bowen bull sales.

**EBV's rated within the breed top 10% Carc.wt & IMF. Top 25% Heavy grain Index.**

Purchaser: ..... \$ .....

**LOT 123**

**PEAKES BOWEN LAD L545 HBR EVTL545**

**23MTHS**

Born: 27/07/2015

AMFU, NHF, CAFU, DDFU, RDF

Tattoo: L545

WAIMATA LAD C78  
 WAIMATA E230  
 WAIMATA H920  
**SIRE: NJWE158 MILWILLAH LAD E158 (AI)**  
 C A FUTURE DIRECTION 5321  
 TE MANIA MITTAGONG X114 (AI)  
 TE MANIA MITTAGONG V1 (AI) (ET)

C A FUTURE DIRECTION 5321  
 ARDROSSAN DIRECTION W109 (AI) (ET)  
 ARDROSSAN WILCOOLA Q71 (AI) (ET)  
**DAM: EVTD48 PEAKES LULU D48 (AI)**  
 TC STOCKMAN 2164  
 BOWEN LULU Z26 (AI)  
 ABERDONIAN LULU R13 (AI) (ET)

**MID-MAY 2017 ANGUS AUSTRALIA BREEDPLAN**

CE	GE	GL	BW	200d	400d	600d	Mcw	Milk	SS	CWT	EMA	Rib	Rump	RBV	IMF	SELECTION INDEXES			
-0.4	-2.9	-6.8	+6.3	+44	+83	+111	+106	+14	+1.7	+63	+7.8	-1.3	-1.8	+1.2	+1.5	ABI	Dom.	Grain	Grass
49%	43%	64%	74%	69%	70%	68%	64%	55%	57%	61%	62%	62%	63%	58%	57%	+\$109	+\$104	+\$115	+\$107

Traits Observed: CE,BWT,200WT,400WT,FAT,EMA,IMF

**Notes:** Another Lad with that outstanding profile, slick skin & hair type. His short gestation offsets his heavier birth weight. Maternal brothers, G73, H611 & K568 sold at previous Bowen bull sales.

**EBV's rated within the breed top 10% short gest. & EMA, top 15% mat.cow wt, RBV, top 25% 600d.**

Purchaser: ..... \$ .....

**LOT 124**

**PEAKES BOWEN IN FOCUS L693 (TR) HBR EVTL693**

**23MTHS**

Born: 24/07/2015

AMFU, NHF, CAFU, DDFU, RDF

Tattoo: L693

MYTTY IN FOCUS  
MILWILLAH IN FOCUS B115 (AI)  
MILWILLAH BARUNAH Z18 (AI)  
**SIRE: EVTH517 PEAKES IN FOCUS H517 (AI)**  
ARDROSSAN EQUATOR A241 (AI) (ET)  
PEAKES BUTTONS F21 (AI)  
BOWEN BUTTONS Y19

B/R NEW DIMENSION 7127  
TE MANIA BARTEL B219 (AI) (ET)  
TE MANIA JEDDA W85 (AI) (ET)  
**DAM: EVTH680 PEAKES JESTRESS H680 (AI) (ET)**  
MERRIDALE SENSATION T2 (AI) (ET)  
MERRIGRANGE JESTRESS V37  
MERRIGRANGE JESTRESS P116 (AI) (ET)

**MID-MAY 2017 ANGUS AUSTRALIA BREEDPLAN**

CED	CEM	GL	BW	200d	400d	600d	Mcw	Milk	SS	CWT	EMA	Rib	Rump	RBV	IMF	SELECTION INDEXES			
-0.4	+0.3	-2.7	+4.0	+42	+67	+90	+79	+17	+1.6	+52	+6.8	-0.5	-0.7	+0.6	+1.8	ABI	Dom.	Grain	Grass
41%	35%	53%	55%	52%	51%	51%	49%	44%	44%	46%	43%	45%	44%	42%	42%	+\$93	+\$94	+\$91	+\$94

Traits Observed: BWT,200WT,600WT,FAT,EMA,IMF

**Notes:** Note the extra length to this sire.

**EBV's rated within the breed top 15% EMA & top 25% milk.**

Purchaser: ..... \$ .....

**LOT 125**

**PEAKES BOWEN EVIDENTLY L628 HBR EVTL628**

**23MTHS**

Born: 26/07/2015

AMFU, NHFU, CAFU, DDF,

Tattoo: L628

TE MANIA BARTEL B219 (AI) (ET)  
DUNOON EVIDENT E614 (AI) (ET)  
DUNOON ELSA B681  
**SIRE: NKLJ81 KANSAS EVIDENTLY J81 (AI)**  
B C MARATHON 7022 (ET)  
KANSAS ANNIE E109 (AI) (ET)  
KANSAS ANNIE X164 (AI) (ET)

B/R NEW DESIGN 036  
MILLAH MURRAH NEW DESIGN U68 (AI)  
MILLAH MURRAH FLOWER S22 (AI)  
**DAM: BPKY45 BOWEN LEAH Y45**  
TC STOCKMAN 2164  
KANSAS LEAH S50 (AI)  
KANSAS LEAH L23+91 (AI) (ET)

**MID-MAY 2017 ANGUS AUSTRALIA BREEDPLAN**

CED	CEM	GL	BW	200d	400d	600d	Mcw	Milk	SS	CWT	EMA	Rib	Rump	RBV	IMF	SELECTION INDEXES			
-2.6	-3.2	-1.9	+5.3	+43	+74	+99	+92	+12	+3.7	+54	+7.7	-2.1	-1.7	+2.3	+1.3	ABI	Dom.	Grain	Grass
45%	37%	49%	73%	63%	61%	62%	59%	51%	50%	53%	49%	53%	51%	48%	47%	+\$97	+\$99	+\$98	+\$98

Traits Observed: CE,BWT,200WT,400WT,FAT,EMA,IMF

**Notes:** Moderate framed Evidently son showing the trademarks of his sire with his softness & style. Maternal brothers C6 & J637 have sold at previous Bowen Bull Sales.

**EBV's rated within the breed top 1% scrotal & RBV, top 10% EMA.**

Purchaser: ..... \$ .....

**LOT 126**

**PEAKES BOWEN EVIDENTLY L549 HBR EVTL549**

**23MTHS**

Born: 4/08/2015

AMFU, NHFU, CAFU, DDC,

Tattoo: L549

TE MANIA BARTEL B219 (AI) (ET)  
DUNOON EVIDENT E614 (AI) (ET)  
DUNOON ELSA B681  
**SIRE: NKLJ81 KANSAS EVIDENTLY J81 (AI)**  
B C MARATHON 7022 (ET)  
KANSAS ANNIE E109 (AI) (ET)  
KANSAS ANNIE X164 (AI) (ET)

BANQUET XPLANATION X060 (AI) (ET)  
BANQUET BUNDY B002 (AI) (ET)  
BLACK GOLD CHAMPAGNE J031+89 (AI) (ET)  
**DAM: EVTD37 PEAKES NUMERAL D37 (AI)**  
BON VIEW BANDO 598  
BOWEN NUMERAL T11 (AI)  
MORDALLUP NUMERAL P256

**MID-MAY 2017 ANGUS AUSTRALIA BREEDPLAN**

CED	CEM	GL	BW	200d	400d	600d	Mcw	Milk	SS	CWT	EMA	Rib	Rump	RBV	IMF	SELECTION INDEXES			
-0.7	-2.5	-1.7	+4.4	+41	+72	+95	+81	+14	+3.1	+51	+6.3	-1.0	-1.2	+1.4	+1.4	ABI	Dom.	Grain	Grass
45%	37%	54%	73%	67%	68%	65%	61%	49%	51%	57%	57%	58%	59%	54%	52%	+\$94	+\$97	+\$92	+\$96

Traits Observed: CE,BWT,200WT,400WT,FAT,EMA,IMF

**Notes:** Evidently consistently adds extra muscle expression. Maternal half brothers G92 & K646 sold at the 2013 & 2016 Bowen bull sales.

**EBV's rated within the breed top 5% scrotal, top 10% RBV & top 20% EMA.**

Purchaser: ..... \$ .....

**LOT 127****PEAKES BOWEN EVIDENTLY L644 HBR EVTL644****23MTHS**

Born: 4/08/2015

AMFU, NHFU, CAFU, DDFU,

Tattoo: L644

TE MANIA BARTEL B219 (AI) (ET)  
 DUNOON EVIDENT E614 (AI) (ET)  
 DUNOON ELSA B681

**SIRE: NKLJ81 KANSAS EVIDENTLY J81 (AI)**

B C MARATHON 7022 (ET)  
 KANSAS ANNIE E109 (AI) (ET)  
 KANSAS ANNIE X164 (AI) (ET)

TC STOCKMAN  
 TC STOCKMAN 2164  
 TC RUBY 5087

**DAM: BPKZ24 BOWEN CALLEEN Z24 (AI)**

BEN NEVIS KNIGHT+90 (AI)  
 BOWEN CALLEEN S14  
 CALLEEN P68 (AI)

**MID-MAY 2017 ANGUS AUSTRALIA BREEDPLAN**

CED	CEM	GL	BW	200d	400d	600d	Mcw	Milk	SS	CWT	EMA	Rib	Rump	RBV	IMF	SELECTION INDEXES			
-4.6	-4.9	-1.5	+5.3	+41	+67	+89	+86	+13	+2.6	+48	+5.9	+0.2	+1.8	+0.6	+1.1	ABI	Dom.	Grain	Grass
46%	38%	49%	73%	68%	68%	66%	60%	51%	53%	57%	58%	59%	60%	54%	52%	+\$77	+\$82	+\$66	+\$82

Traits Observed: CE,BWT,200WT,400WT,FAT,EMA,IMF

**Notes:** Evidently L644's dam Callen Z14 has been a great producer, producing five sons E33, F87, G44, H602 & J632 selling in Bowen Bull Sales from 2011 to 2015.

**EBV's rated within the breed top 10% rump fat.**

Purchaser: ..... \$ .....

**LOT 128****PEAKES BOWEN EVIDENTLY L596 HBR EVTL596****23MTHS**

Born: 27/07/2015

AMFU, NHFU, CAF, DDFU,

Tattoo: L596

TE MANIA BARTEL B219 (AI) (ET)  
 DUNOON EVIDENT E614 (AI) (ET)  
 DUNOON ELSA B681

**SIRE: NKLJ81 KANSAS EVIDENTLY J81 (AI)**

B C MARATHON 7022 (ET)  
 KANSAS ANNIE E109 (AI) (ET)  
 KANSAS ANNIE X164 (AI) (ET)

C A FUTURE DIRECTION 5321  
 ARDROSSAN DIRECTION W109 (AI) (ET)  
 ARDROSSAN WILCOOLA Q71 (AI) (ET)

**DAM: EVTB68 PEAKES VICKY B68 (AI)**

RITO 9FB3 OF 5H11 FULLBACK  
 MOOKI RIVER VICKY S6 (AI) (ET)  
 MERRIGRANGE VICKY H47+88 (AI) (ET)

**MID-MAY 2017 ANGUS AUSTRALIA BREEDPLAN**

CED	CEM	GL	BW	200d	400d	600d	Mcw	Milk	SS	CWT	EMA	Rib	Rump	RBV	IMF	SELECTION INDEXES			
-0.5	-0.5	-2.7	+4.9	+44	+76	+102	+93	+16	+2.7	+60	+7.9	-0.5	-0.3	+1.7	+1.0	ABI	Dom.	Grain	Grass
46%	39%	54%	73%	67%	68%	64%	60%	50%	52%	57%	57%	57%	59%	54%	52%	+\$105	+\$104	+\$102	+\$106

Traits Observed: CE,BWT,200WT,400WT,FAT,EMA,IMF

**Notes:** Another solid Evidently son. Maternal half brothers E77, H568 & J573 sold in previous Bowen bull sales.

**EBV's rated within the breed top 5% IMF & top 10% EMA.**

Purchaser: ..... \$ .....



Kansas Evidently J81

**KANSAS EVIDENTLY J81****SIRE OF LOTS**

**80, 91, 92, 95, 110, 125,  
 126, 127, 135 & 138.**

# LOT 129

## PEAKES BOWEN LAD L625 HBR EVTL625

24MTHS

Born: 18/07/2015

AMFU, NHFU, CAFU, DDFU, RDC

Tattoo: L625

WAIMATA LAD C78  
WAIMATA E230  
WAIMATA H920

LEACHMAN RIGHT TIME  
BT RIGHT TIME 24J  
SITZ EVERELDA ENTENSE 1905

**SIRE: NJWE158 MILWILLAH LAD E158 (AI)**

**DAM: EVTE29 PEAKES PRIMROSE E29 (AI)**

C A FUTURE DIRECTION 5321  
TE MANIA MITTAGONG X114 (AI)  
TE MANIA MITTAGONG V1 (AI) (ET)

YTHANBRAE PRECISION U28 (AI) (ET)  
BOWEN PRIMROSE A38 (AI)  
BOWEN PRIMROSE X17 (AI)

### MID-MAY 2017 ANGUS AUSTRALIA BREEDPLAN

CED	CEM	GL	BW	200d	400d	600d	Mcw	Milk	SS	CWT	EMA	Rib	Rump	RBV	IMF	SELECTION INDEXES			
-1.2	-3.6	-5.3	+5.4	+40	+74	+98	+75	+13	+1.2	+54	+6.4	-1.0	-1.6	+1.1	+1.7	ABI	Dom.	Grain	Grass
48%	42%	64%	74%	69%	69%	68%	63%	55%	55%	61%	61%	62%	62%	58%	57%	+\$104	+\$101	+\$108	+\$102

Traits Observed: CE,BWT,200WT,400WT,FAT,EMA,IMF

**Notes:** A tonne of volume and growth in this Lad son, exhibiting excellent top structure and slick skin.

**EBV's rated within the breed top 15% RBV, top 20% short gestation L. & EMA.**

Purchaser: ..... \$ .....

# LOT 130

## PEAKES BOWEN REGENT L532 HBR EVTL532

22MTHS

Born: 4/09/2015

AMFU, NHFU, CAFU, DDFU,

Tattoo: L532

RENNYLEA XPONENTIAL X555 (AI) (ET)  
TE MANIA AMBASSADOR A134 (AI)  
TE MANIA LOWAN Y211 (ACR) (AI)

C A FUTURE DIRECTION 5321  
ARDROSSAN DIRECTION W109 (AI) (ET)  
ARDROSSAN WILCOOLA Q71 (AI) (ET)

**SIRE: BNAD145 TUWHARETOA REGENT D145 (AI) (ET)**

**DAM: EVTC32 PEAKES LULU C32 (AI)**

YTHANBRAE HENRY VIII U8 (AI) (ET)  
LAWSONS HENRY VIII Y5 (AI)  
YTHANBRAE DIRECTION T270 (AI)

WHITESTONE WIDESPREAD MB  
BOWEN LULU W27 (AI)  
ABERDONIAN LULU R13 (AI) (ET)

### MID-MAY 2017 ANGUS AUSTRALIA BREEDPLAN

CED	CEM	GL	BW	200d	400d	600d	Mcw	Milk	SS	CWT	EMA	Rib	Rump	RBV	IMF	SELECTION INDEXES			
-2.6	-3.1	-3.8	+5.8	+43	+76	+109	+116	+15	+1.3	+77	+5.4	-0.9	-2.3	+0.0	+2.8	ABI	Dom.	Grain	Grass
60%	58%	67%	75%	71%	72%	71%	69%	64%	61%	66%	66%	66%	67%	64%	63%	+\$103	+\$90	+\$120	+\$95

Traits Observed: CE,BWT,200WT,400WT,FAT,EMA,IMF

**Notes:** Dam Lulu C32 is a magnificent cow, we have retained many of her daughters. This long sound Regent son will breed well.

**EBV's rated within the breed top 5% mat.cow wt & carc. Wt, top 15% IMF.**

Purchaser: ..... \$ .....

# LOT 131

## PEAKES BOWEN ELSOM L621 HBR EVTL621

23MTHS

Born: 19/08/2015

AMFU, NHF, CAFU, DDF,

Tattoo: L621

ARDROSSAN EQUATOR A241 (AI) (ET)  
MILWILLAH ELSOM F189 (AI)  
MILWILLAH MOONGARA D123

B T ULTRAVOX 297E  
MILWILLAH ULTRAVOX B100 (AI)  
TE MANIA JEDDA X66 (AI) (ET)

**SIRE: NJWH283 MILWILLAH ELSOM H283**

**DAM: EVTH650 PEAKES LEAH H650**

TE MANIA UNLIMITED U3271 (AI) (ET)  
MILWILLAH BARUNAH E51 (AI) (ET)  
TE MANIA BARUNAH X46 (AI) (ET)

ARDROSSAN DIRECTION W109 (AI) (ET)  
BOWEN LEAH B81 (AI)  
BOWEN LEAH Y45

### MID-MAY 2017 ANGUS AUSTRALIA BREEDPLAN

CED	CEM	GL	BW	200d	400d	600d	Mcw	Milk	SS	CWT	EMA	Rib	Rump	RBV	IMF	SELECTION INDEXES			
+1.4	+0.0	-2.7	+3.7	+39	+70	+99	+83	+17	+2.0	+58	+7.0	-1.3	-2.2	+0.9	+1.7	ABI	Dom.	Grain	Grass
43%	34%	60%	73%	68%	69%	66%	62%	45%	50%	56%	58%	59%	59%	54%	53%	+\$97	+\$96	+\$99	+\$98

Traits Observed: CE,BWT,200WT,400WT,FAT,EMA,IMF

**Notes:** Note this young sire's deep body, soft skin & hair type. Sired by Elsom H283, (\$48,000) top priced bull at the 2014 Milwillah bull sale.

**EBV's rated within the breed top 15% EMA, top 25% milk & RBV.**

Purchaser: ..... \$ .....

**LOT 132****PEAKES BOWEN ELSOM L744 (AI) HBR EVTL744****21MTHS**

Born: 11/10/2015

AMFU, NHFU, CAFU, DDFU,

Tattoo: L744

ARDROSSAN EQUATOR A241 (AI) (ET)  
 MILWILLAH ELSOM F189 (AI)  
 MILWILLAH MOONGARA D123  
**SIRE: NJWH283 MILWILLAH ELSOM H283**  
 TE MANIA UNLIMITED U3271 (AI) (ET)  
 MILWILLAH BARUNAH E51 (AI) (ET)  
 TE MANIA BARUNAH X46 (AI) (ET)

B/R DESTINATION 727  
 B/R DESTINATION 727-928  
 B/R BLACKCAP EMPRESS 558  
**DAM: VTMZ461 TE MANIA LOWAN Z461 (AI) (ET)**  
 TE MANIA NORMAN N48+93 (AI) (ET)  
 TE MANIA LOWAN R426 (AI) (ET)  
 TE MANIA LOWAN N72+93

**MID-MAY 2017 ANGUS AUSTRALIA BREEDPLAN**

CED	CEM	GL	BW	200d	400d	600d	Mcw	Milk	SS	CWT	EMA	Rib	Rump	RBV	IMF	SELECTION INDEXES			
+0.6	+0.0	-3.1	+4.6	+39	+71	+91	+74	+17	+2.3	+56	+5.3	-0.7	-0.8	+0.5	+2.2	ABI	Dom.	Grain	Grass
50%	41%	84%	75%	70%	71%	68%	64%	52%	56%	60%	61%	62%	62%	58%	57%	+\$105	+\$103	+\$111	+\$101

Traits Observed: GL, CE, BWT, 200WT, 400WT, FAT, EMA, IMF

**Notes:** One of the youngest bulls in catalogue, excellent structure & has loads of potential. His Donor Dam Lowan Z461 is a beautiful soft deep bodied female.

**EBV's rated within the breed top 20% scrotal & top 25% milk.**

Purchaser: ..... \$ .....

**LOT 133****PEAKES BOWEN REGENT L586 HBR EVTL586****23MTHS**

Born: 7/08/2015

AMFU, NHFU, CAFU, DDFU,

Tattoo: L586

RENNYLEA XPONENTIAL X555 (AI) (ET)  
 TE MANIA AMBASSADOR A134 (AI)  
 TE MANIA LOWAN Y211 (ACR) (AI)  
**SIRE: BNAD145 TUWHARETOA REGENT D145 (AI) (ET)**  
 YTHANBRAE HENRY VIII U8 (AI) (ET)  
 LAWSONS HENRY VIII Y5 (AI)  
 YTHANBRAE DIRECTION T270 (AI)

TE MANIA UNLIMITED U3271 (AI) (ET)  
 TE MANIA INFINITY 04 379 AB  
 TE MANIA 95102  
**DAM: EVTG15 PEAKES ENNA G15 (AI)**  
 DSK HU X-TRA STRENGTH X4 (AI) (ET)  
 BOWEN ENNA B41  
 BOWEN ENNA V8

**MID-MAY 2017 ANGUS AUSTRALIA BREEDPLAN**

CED	CEM	GL	BW	200d	400d	600d	Mcw	Milk	SS	CWT	EMA	Rib	Rump	RBV	IMF	SELECTION INDEXES			
-6.1	-8.1	-2.4	+6.4	+44	+76	+107	+108	+11	+1.7	+68	+3.9	-1.2	-1.8	-0.6	+3.2	ABI	Dom.	Grain	Grass
57%	55%	66%	74%	69%	70%	69%	66%	60%	59%	64%	64%	64%	65%	62%	61%	+\$91	+\$81	+\$107	+\$83

Traits Observed: CE, BWT, 200WT, 400WT, FAT, EMA, IMF

**Notes:** Typical Regent son showing great body length & high marbling.

**EBV's rated within the breed top 10% IMF, top 15% Mat.cow wt & Carc. wt.**

Purchaser: ..... \$ .....

**MILWILLAH LAD E158****SIRE OF LOTS**

**75, 77, 88, 96, 109, 111,  
 112, 113, 117, 123 & 129.**

# LOT 134

## PEAKES BOWEN REGENT L623 HBR EVTL623

23MTHS

Born: 29/07/2015

AMFU, NHFU, CAFU, DDFU,

Tattoo: L623

RENNYLEA XPONENTIAL X555 (AI) (ET) TC STOCKMAN 2164  
 TE MANIA AMBASSADOR A134 (AI) BOWEN STOCKMAN W16 (AI)  
 TE MANIA LOWAN Y211 (ACR) (AI) KANSAS HEART N60+93 (AI) (ET)  
**SIRE: BNAD145 TUWHARETOA REGENT D145 (AI) (ET)** **DAM: BPKZ1 BOWEN DAINTY Z1**  
 YTHANBRAE HENRY VIII U8 (AI) (ET) OUTWEST RELISH R11  
 LAWSONS HENRY VIII Y5 (AI) BOWEN DAINTY T4  
 YTHANBRAE DIRECTION T270 (AI) MORDALLUP DAINTY Q154 (AI)

### MID-MAY 2017 ANGUS AUSTRALIA BREEDPLAN

CED	CEM	GL	BW	200d	400d	600d	Mcw	Milk	SS	CWT	EMA	Rib	Rump	RBY	IMF	SELECTION INDEXES			
-6.4	-7.8	-0.3	+6.7	+41	+69	+94	+95	+11	+0.7	+62	+3.4	-0.9	-2.1	-0.2	+2.7	ABI	Dom.	Grain	Grass
55%	52%	60%	74%	70%	70%	68%	64%	62%	59%	62%	61%	61%	63%	59%	57%	+\$69	+\$72	+\$75	+\$67

Traits Observed: CE,BWT,200WT,400WT,FAT,EMA,IMF

**Notes:** A high yielding young sire with excellent temperament. His dam Dainty Z1 has had four sons selling at previous Bowen Bull Sales.

**EBV's rated within the breed top 15% IMF.**

Purchaser: ..... \$ .....

# LOT 135

## PEAKES BOWEN EVIDENTLY L638 HBR EVTL638

23MTHS

Born: 1/08/2015

AMFU, NHF, CAFU, DDC,

Tattoo: L638

TE MANIA BARTEL B219 (AI) (ET) ARDROSSAN DIRECTION W109 (AI) (ET)  
 DUNOON EVIDENT E614 (AI) (ET) BOWEN DIRECTION B64 (AI)  
 DUNOON ELSA B681 BOWEN ABIGAIL Y13  
**SIRE: NKLJ81 KANSAS EVIDENTLY J81 (AI)** **DAM: EVTD63 PEAKES DANDLOO D63**  
 B C MARATHON 7022 (ET) SA NEUTRON 377  
 KANSAS ANNIE E109 (AI) (ET) BOWEN DANDLOO B46 (AI)  
 KANSAS ANNIE X164 (AI) (ET) BOWEN DANDLOO X3

### MID-MAY 2017 ANGUS AUSTRALIA BREEDPLAN

CED	CEM	GL	BW	200d	400d	600d	Mcw	Milk	SS	CWT	EMA	Rib	Rump	RBY	IMF	SELECTION INDEXES			
-3.1	-4.5	-2.4	+5.4	+40	+68	+90	+82	+14	+2.8	+50	+6.2	-2.0	-1.8	+2.0	+1.4	ABI	Dom.	Grain	Grass
43%	35%	49%	73%	67%	68%	65%	61%	48%	49%	56%	57%	58%	59%	53%	51%	+\$86	+\$91	+\$85	+\$87

Traits Observed: CE,BWT,200WT,400WT,FAT,EMA,IMF

**Notes:** This Evidently J81 son will weigh like lead. He will produce soft high yielding progeny.

**EBV's rated within the breed top 5% scrotal & RBY, top 25% EMA.**

Purchaser: ..... \$ .....

# LOT 136

## PEAKES BOWEN REGENT L541 HBR EVTL541

23MTHS

Born: 28/08/2015

AMFU, NHFU, CAFU, DDF, RDF

Tattoo: L541

RENNYLEA XPONENTIAL X555 (AI) (ET) MYTTY IN FOCUS  
 TE MANIA AMBASSADOR A134 (AI) MILWILLAH IN FOCUS B115 (AI)  
 TE MANIA LOWAN Y211 (ACR) (AI) MILWILLAH BARUNAH Z18 (AI)  
**SIRE: BNAD145 TUWHARETOA REGENT D145 (AI) (ET)** **DAM: EVTE86 PEAKES NUMERAL E86**  
 YTHANBRAE HENRY VIII U8 (AI) (ET) R/M ULTRA CASH FLOW 102  
 LAWSONS HENRY VIII Y5 (AI) PEAKES NUMERAL C20 (AI)  
 YTHANBRAE DIRECTION T270 (AI) BOWEN NUMERAL Y46

### MID-MAY 2017 ANGUS AUSTRALIA BREEDPLAN

CED	CEM	GL	BW	200d	400d	600d	Mcw	Milk	SS	CWT	EMA	Rib	Rump	RBY	IMF	SELECTION INDEXES			
+0.2	-3.1	-4.4	+4.2	+43	+70	+99	+90	+16	+1.0	+64	+5.9	+0.1	-1.3	-0.5	+3.1	ABI	Dom.	Grain	Grass
57%	54%	61%	66%	68%	69%	68%	66%	61%	59%	63%	64%	64%	65%	62%	60%	+\$102	+\$93	+\$115	+\$97

Traits Observed: CE,200WT,400WT,FAT,EMA,IMF

**Notes:** Maternal brother J526 sold in the 2015 Bowen Bull Sale. Regent L541 exhibits his sire's length & will breed terrific females.

**EBV's rated within the breed top 10% IMF & top 25% carc.wt.**

Purchaser: ..... \$ .....

# LOT 137

## PEAKES BOWEN IRONSIDE L780 (AI) (ET) HBR EVTL780 22MTHS

Born: 6/09/2015

AMFU, NHFU, CAFU, DDF,

Tattoo: L780

G A R PRECISION 1680  
C A FUTURE DIRECTION 5321  
C A MISS POWER FIX 308

**SIRE: USA14954578 R/M IRONSTONE 4047**

B/R NEW DESIGN 323  
B/R RUBY OF TIFFANY 5144  
B/R RUBY OF TIFFANY 346

B/R NEW DESIGN 036  
BON VIEW NEW DESIGN 1407  
BON VIEW PRIDE 664

**DAM: NKLY18 KANSAS ANNIE Y18 (AI) (ET)**

G T EXPO  
AMAROO EXPO ANNIE U020 (AI) (ET)  
SUMMITCREST ANNIE C022

### MID-MAY 2017 ANGUS AUSTRALIA BREEDPLAN

CED	CEM	GL	BW	200d	400d	600d	Mcw	Milk	SS	CWT	EMA	Rib	Rump	RBY	IMF	SELECTION INDEXES			
-1.8	-0.3	-2.2	+5.2	+45	+75	+104	+95	+14	+1.6	+51	+5.6	-2.0	-2.0	+1.5	+2.0	ABI	Dom.	Grain	Grass
60%	53%	65%	76%	72%	72%	71%	68%	65%	65%	65%	65%	65%	65%	62%	61%	+\$106	+\$101	+\$114	+\$103

Traits Observed: BWT,200WT,400WT,FAT,EMA,IMF

**Notes:** Donor Dam Annie Y18 has bred very well for us, we have retained many daughters in our herd. This son displays natural doing ability and volume. Would suit the feedlot producer.

**EBV's rated within the breed top 10% RBY.**

Purchaser: ..... \$ .....

# LOT 138

## PEAKES BOWEN EVIDENTLY L756 HBR EVTL756 21MTHS

Born: 10/10/2015

AMFU, NHFU, CAFU, DDFU,

Tattoo: L756

TE MANIA BARTEL B219 (AI) (ET)  
DUNOON EVIDENT E614 (AI) (ET)  
DUNOON ELSA B681

**SIRE: NKLJ81 KANSAS EVIDENTLY J81 (AI)**

B C MARATHON 7022 (ET)  
KANSAS ANNIE E109 (AI) (ET)  
KANSAS ANNIE X164 (AI) (ET)

S A F FOCUS OF E R  
MYTTY IN FOCUS  
MYTTY COUNTESS 906

**DAM: EVTH621 PEAKES LOWAN H621 (AI)**

VERMILION NEW DESIGN L805  
VERMONT LOWAN E334 (AI) (ET)  
VERMONT LOWAN B136 (AI) (ET)

### MID-MAY 2017 ANGUS AUSTRALIA BREEDPLAN

CED	CEM	GL	BW	200d	400d	600d	Mcw	Milk	SS	CWT	EMA	Rib	Rump	RBY	IMF	SELECTION INDEXES			
+0.5	-0.8	-0.7	+4.9	+50	+85	+112	+96	+16	+3.6	+64	+7.4	-1.6	-1.4	+1.8	+1.6	ABI	Dom.	Grain	Grass
45%	38%	52%	60%	57%	57%	56%	54%	46%	48%	50%	50%	52%	51%	48%	49%	+\$119	+\$114	+\$124	+\$117

Traits Observed: CE,200WT,400WT,FAT,EMA,IMF

**Notes:** Strong sound Evidently J81 son.

**EBV's rated within the breed top 1% scrotal, top 10% 200d, EMA & RBY, top 20% Domestic & Heavy grass indexes, top 25% 400d, carc.wt & Angus breeding index.**

Purchaser: ..... \$ .....



### Stuart Peake Memorial Cancer Research Trust makes donation to Garven Institute.

On the 16th November 2016, Jodi & Stephen Peake visited the Garvan Institute to present a cheque for \$21,000 to Deputy Director Garvan Research Foundation Chris Goodnow on behalf of the Stuart Peake Memorial Cancer Research Trust.

The Garvan Institute conducts research into many diseases ranging from Cancer, Arthritis, Multiple Sclerosis, Parkinsons Disease, Motor Neurone Disease just to name a few.

**LOT 139**

**PEAKES BOWEN REGENT L600 HBR EVTL600**

**23MTHS**

Born: 30/07/2015

AMFU, NHFU, CAF, DDF, RDC

Tattoo: L600

RENNYLEA XPONENTIAL X555 (AI) (ET)  
TE MANIA AMBASSADOR A134 (AI)  
TE MANIA LOWAN Y211 (ACR) (AI)

MYTTY IN FOCUS  
MILWILLAH IN FOCUS B115 (AI)  
MILWILLAH BARUNAH Z18 (AI)

**SIRE: BNAD145 TUWHARETOA REGENT D145 (AI) (ET)**  
YTHANBRAE HENRY VIII U8 (AI) (ET)  
LAWSONS HENRY VIII Y5 (AI)  
YTHANBRAE DIRECTION T270 (AI)

**DAM: EVTE75 PEAKES ABIGAIL E75**  
N.E.D HENRY VIII Z3 (AI)  
BOWEN ABIGAIL B12  
BOWEN ABIGAIL Y42

**MID-MAY 2017 ANGUS AUSTRALIA BREEDPLAN**

CE	CEM	GL	BW	200d	400d	600d	Mcw	Milk	SS	CWT	EMA	Rib	Rump	RBV	IMF	SELECTION INDEXES			
+0.2	-2.8	-3.5	+4.5	+44	+72	+101	+99	+16	+1.2	+70	+6.2	-1.0	-3.0	+0.3	+3.1	ABI	Dom.	Grain	Grass
57%	54%	62%	75%	70%	71%	70%	68%	62%	59%	64%	64%	65%	66%	62%	61%	+\$107	+\$97	+\$124	+\$98

Traits Observed: CE,BWT,200WT,400WT,FAT,EMA,IMF

**Notes:** Maternal brother G99 sold in 2013 Bowen bull sale. L600 is a sound free moving sire with smooth slick skin, would suit the feedlot producer.

**EBV's rated within the breed top 10% carc.wt & IMF. Top 25% mat.cow wt, & EMA.**

Purchaser: ..... \$ .....

**LOT 140**

**PEAKES BOWEN FATHOM L717 HBR EVTL717**

**24MTHS**

Born: 2/07/2015

AMFU, NHFU, CAFU, DDF,

Tattoo: L717

CONNEALY ALL AROUND  
KANSAS FATHOM F167 (AI)  
KANSAS ANNIE B170 (AI) (ET)

ARDROSSAN ADMIRAL A2 (AI) (ET)  
DUNOON FOURMILE F464 (AI) (ET)  
DUNOON BEEAC Z120

**SIRE: EVTJ606 PEAKES FATHOM J606**  
BR MIDLAND  
PEAKES BOWEN LULU F117 (AI) (ET)  
BOWEN LULU W27 (AI)

**DAM: EVTJ648 PEAKES HEART J648**  
BULLIAC DE CASTELLA D1 (AI)  
PEAKES HEART F3  
BOWEN HEART B10

**MID-MAY 2017 ANGUS AUSTRALIA BREEDPLAN**

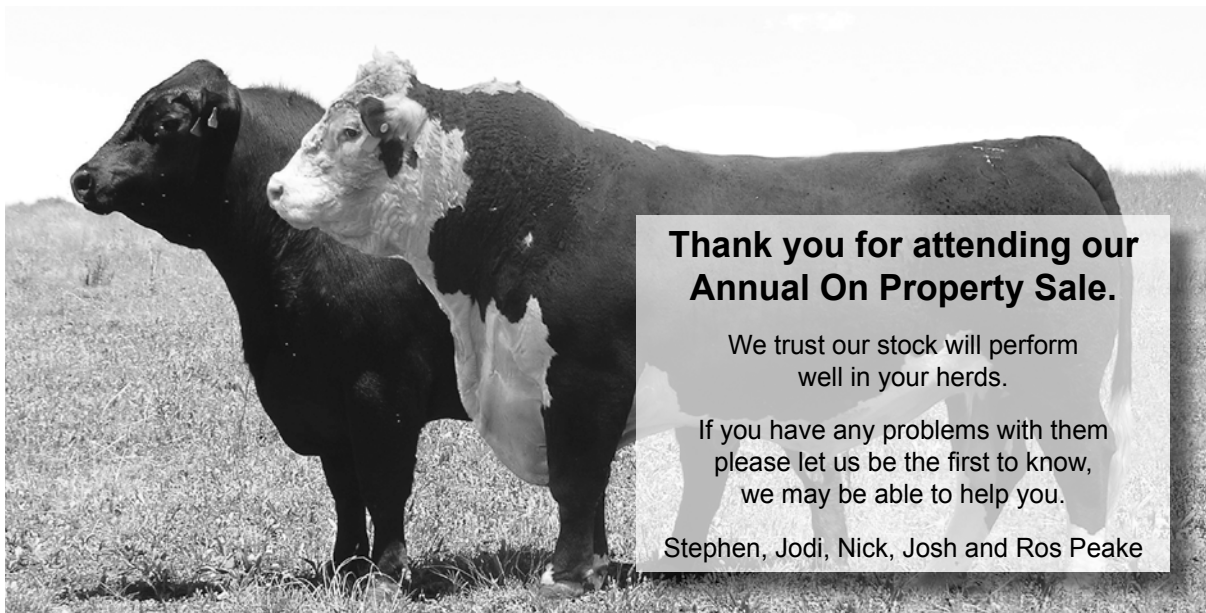
CE	CEM	GL	BW	200d	400d	600d	Mcw	Milk	SS	CWT	EMA	Rib	Rump	RBV	IMF	SELECTION INDEXES			
-2.5	-0.9	-4.3	+6.5	+52	+86	+122	+119	+11	+1.8	+73	+3.3	-2.3	-2.7	+1.0	+1.8	ABI	Dom.	Grain	Grass
39%	29%	41%	70%	64%	65%	62%	56%	40%	41%	52%	52%	52%	54%	48%	45%	+\$105	+\$98	+\$113	+\$103

Traits Observed: CE,BWT,200WT,400WT,FAT,EMA,IMF

**Notes:** A later maturing sire with excellent growth & weight for age.

**EBV's rated within the breed top 5% 200d, Mat.cow wt. & carc. wt, top 10% 600d, top 20% 400d & RBV.**

Purchaser: ..... \$ .....



**Thank you for attending our Annual On Property Sale.**

We trust our stock will perform well in your herds.

If you have any problems with them please let us be the first to know, we may be able to help you.

Stephen, Jodi, Nick, Josh and Ros Peake

## SEMEN PACKAGES

# CONNEALY BLACK GRANITE (HBR)

Born: 13/01/2011

AMF, NHF, CAF, DDF

Ident: USA17028963



KMK ALLIANCE 6595 I87  
 CONNEALY CONSENSUS  
 BLINDA OF CONANGA 004  
**SIRE: USA16447771 CONNEALY CONSENSUS 7229**  
 WOODHILL ADMIRAL 77K  
 BLUE LILLY OF CONANGA 16  
 BLUE CASH OF CONANGA 6020

G A R GRID MAKER  
 S A V BISMARCK 5682  
 S A V ABIGALE 0451  
**DAM: USA16448837 EURA ELGA OF CONANGA 9109**  
 CONNEALY BLACK BARON OF SCAR  
 EURA CAL OF CONANGA 56B  
 ELGINA OF CONANGA 868 232

### MID-MAY 2017 ANGUS AUSTRALIA BREEDPLAN

CED	CEM	GL	BW	200d	400d	600d	M <sub>cw</sub>	Milk	SS	CWT	EMA	Rib	Rump	RBY	IMF	SELECTION INDEXES			
																ABI	Dom.	Grain	Grass
+1.0	+0.3	-4.4	+4.1	+46	+76	+89	+70	+15	+1.3	+56	+9.0	+0.0	-1.3	+2.0	+1.4	+105	+113	+102	+106
47%	38%	55%	55%	54%	54%	54%	51%	51%	53%	49%	49%	50%	48%	46%	48%				

*Traits Observed:*

**Notes:** Outstanding sire that we inspected last September, he has excellent structure, very good feet and has a bomb proof temperament.

**Lot 141      20 x straws Connealy Black Granite**

Purchaser: ..... \$ .....

**Lot 142      10 x straws Connealy Black Granite. Proceeds will be donated to  
 Stuart Peake Memorial Cancer Research Trust**

Purchaser: ..... \$ .....



Snapshots from the year



# CONDITIONS OF SALE

All bids shall be treated as offers made upon the following Terms and Conditions of Sale and all persons present are admitted to the sale on the basis that they have notice of these Terms and Conditions.

1. The highest bidder shall, subject to Condition 2, be the purchaser provided that the vendor reserves the right to bid either by himself or through his agent or auctioneer and should any dispute arise among the bidders for any lot, during or immediately after sale of lot, it shall be settled at the auctioneer's absolute discretion who may, should one of the disputants advance, put the lot or lots up again. The bidding from time to time shall be regulated by the auctioneer and no bid shall be retracted.
  2. The sale will be conducted on a "Sale" or "No Sale" basis whereby the lot for sale shall be knocked down to the highest bidder, but the sale will be subject to the acceptance of the highest bid by the vendor who will immediately after the fall of the hammer declare "Sale" or "No Sale". Should the vendor reject the bid of the highest bidder such bidder will have the right of first refusal of the lot at the vendor's nominated price for one hour after the lot has been passed out of the ring on the Terms and Conditions herein set forth in so far as they shall apply.
  3. The details of the purchaser, the purchase price and the lot sold as recorded by the sale clerk for and on behalf of the auctioneer shall be equally binding on both purchaser and vendor.
  4. The auctioneer expressly reserves the right, without giving any reason therefore to:-
    - (a) Refuse to acknowledge any bid;
    - (b) Withdraw any lot or lots before or during the sale;
    - (c) Exclude any person from the auction venue should it think fit.
  5. Each lot in all cases shall be at the risk and expense of the purchaser, upon acceptance of his bid by the vendor or upon acceptance of the highest bidder's offer by the vendor whichever shall be earlier.
  6. Except as expressly provided in these Terms and Conditions of Sale no guarantee or warranty shall be given in respect of any lot sold under these Conditions as to pedigree, sex, age, breeding condition or otherwise howsoever, and no guarantee, warranty or condition whatsoever shall be implied from any affirmation made before or at the time of the sale, or from any circumstances of the sale, but in all cases where a guarantee is intended the same shall attach and be enforceable only if reduced to writing before delivery of the lot and signed by the vendor or by the auctioneer acting as agent for the vendor, and the absence of such writing shall be conclusive evidence in case of dispute that no guarantee, warranty or condition whatsoever was given or implied.
  7. In the event of any dispute in respect of the sale of any lot:-
    - (a) The purchaser shall nevertheless be obliged to pay the auctioneer the full purchase price and any other moneys or interest payable by the purchaser in accordance with these Terms and Conditions;
    - (b) The vendor and the purchaser shall resolve the dispute between themselves;
    - (c) The auctioneer shall have no liability or responsibility in regard to the dispute; and
    - (d) No lot shall be returned to the auctioneer and the purchaser shall indemnify the auctioneer for all costs, expenses and damages which the auctioneer is put to or incurs by reason of the purchaser so doing.
  8. The name of the vendor for whom the auctioneer acts is acknowledged to have been furnished to the purchasers prior to sale and further particulars will in call cases be furnished to a purchaser if required. In the case of any dispute the remedy of the purchaser shall be against the vendor only and in no case or under any circumstances against the auctioneer who is to be regarded for all intents and purposes as agent for a disclosed principal.
  9. (a) Payment - Unless prior credit arrangements have been made in writing with the auctioneer the full purchase price for each lot shall be due and payable to the auctioneer in cash upon acceptance of the highest bid or the highest bidder's offer by the vendor and prior to delivery. Notwithstanding that delivery is given to or possession obtained by the purchaser or his representative prior to the payment of the purchase money in full the property in any lot which is sold shall not pass to the purchaser until the full purchase price and all cheques promissory notes, bills or exchange, acceptance orders or drafts given in connection with such payment have been paid and liquidated, and until property shall pass, the purchaser shall hold such lot as bailee, provided that in all cases should such payment not have been made and liquidated within 14 days of the date of the sale the auctioneer reserves the right to:
    - (i) Rescind the contract on behalf of the vendor and repossess and resell any lot;
    - (ii) Recover from the purchaser interest upon the purchase price at a rate per annum which aggregates the AMBA Bill Rate and two percentum. For the purposes of this condition, the expression "the AMBA Bill Rate" is the rate published by the Australian Merchant Bankers Association in good faith as at the date of the sale as its bill rate for 180 day bills of exchange expressed as a percentage per annum. If any time the AMBA bill Rate becomes unavailable for any reason, the auctioneer shall determine and advise the purchaser of the interest rate to apply for the purposes of this condition.
  - (b) The auctioneer is selling as the del credere agent of the vendor and the full purchase price of any lot sold shall be payable by the purchaser to the auctioneer and be full recoverable by the auctioneer in its own name.
10. If the purchaser shall neglect or fail to comply with any of the within conditions, any lot purchased by him may be immediately resold by public auction or private contract, with or without notice, at the risk of the former purchaser, who will be held responsible for all loss and expenses arising out of such resale, and shall not participate in any profit accruing therefrom.
  11. Any vendor or purchaser removing the sale number from any lot after it has been sold will full indemnify all affected parties for any loss, costs or damage should the lot be wrongly delivered.
  12. The purchasers, if more than one, shall be jointly and severally bound by these Terms and Conditions, and shall jointly and severally carry out and perform same.
  13. Any person who advances a bid on a lot shall do so on the expressed condition and understanding that should that person's bid be highest bid and such bid is accepted by the vendor, then that person will be held personally liable for the price so agreed upon, regardless of the fact that the person may be acting on behalf of another party, either disclosed or undisclosed to the vendor or the auctioneer, provided however, that this condition shall not in any way negate the vendor's right to claim against any principal and in such case the bidder's liability shall be construed to be by way of guarantee.
  14. The auctioneer may, should it think fit, make arrangements on a purchaser's behalf for the feeding, watering, trucking, shipping of and general attendance to any lot after sale but no responsibility will be accepted by the auctioneer and all such service will be at the purchaser's risk and expense.
  15. No lot will be delivered until the sales invoice has been checked and signed by the purchaser or his duly authorised representative.
  16. (a) Each lot in all cases shall be sold with all faults, if any, and excepting those conditions and warranties implied by the Trade Practices Act or any applicable State legislation which cannot be contractually excluded and excepting conditions and warranties expressly contained in these Terms and Conditions of Sale, any express or implied condition, statement or warranty, statutory or otherwise, is hereby excluded. The auctioneer is not liable in respect of any error, misdescription or omission in any particulars appearing or stated regarding the description or pedigrees of any lot offered for sale and no such error, misdescription or omission shall entitle the purchaser to annul the sale or reject the lot or claim any compensation, damage or abatement in price.
    - (b) Each lot will be sold subject to passing all veterinary tests required by the law of the state or country to which the purchaser intends to transport that particular lot, such tests to be undertaken at the purchaser's expense and concluded immediately following the sale. In the event that a lot is alleged or provided not to be a breeder, the purchaser shall nevertheless be obliged to pay the auctioneer the full purchase price and any other moneys or interest payable by the purchaser in accordance with the Terms and Conditions.
  17. (a) Each lot shall be at the risk of the vendor in respect of any damage or injury, whether by disease, accident or otherwise, or whether caused by the negligence of the auctioneer for the period that the lot be in the custody of the auctioneer, unless such lots shall have been sold, in which latter case such lot shall be at the risk of the purchaser in all such respect.
    - (b) If any vendor brings to the sale premises any lot which is dangerous or injected with any disease, that vendor shall be liable for all injury, damages, costs, losses or expenses, which the auctioneer may sustain, incur or be put to either directly or indirectly as a result of the vendor do doing. The auctioneer reserves the right, at its absolute discretion, to exclude from the sale, or put out of the sale venue or dispose of, any lot which in its opinion shows signs of any disease, whether infectious, contagious or not, or of any serious fault or of being dangerous.
  18. Delivery- Except at the discretion of the auctioneer no lot shall be delivered to the purchaser unless payment of the purchase money together with any additional charges incurred including those expenses incurred by the auctioneer pursuant to Condition 14 hereof, is first made by the purchaser to the auctioneer. Release of lots may be withheld by the auctioneer until personal cheques are cleared.
  19. In these Conditions:
    - (a) Reference to "Auctioneer" shall be taken to mean as the context so admits, the selling agent or any member, subsidiary or related corporation or body, officer, agent or employee thereof, authorised by the vendor to conduct the sale of a lot;
    - (b) "Purchaser" shall have the meaning ascribed to it in Condition 1;
    - (c) "Vendor" shall mean the person or corporation upon whose account lots are offered for sale and where a stud or farm is named shall mean the proprietor of that stud or farm;
    - (d) "Lot" shall be taken to mean the animal offered for sale and/or sold by the auctioneer on behalf of a vendor.

## IMPORTANT NOTICE

The selling agent, its members, subsidiary or related corporations, officers, agents and employees for themselves and for those for whom they act while exercising due care provide all information without responsibility and give no guarantee whatsoever as to its accuracy.

All persons who attend the sale do so entirely at their risk and the selling agent, its members, subsidiary or related corporations, officers, agents, employees and its principles, for themselves and for those for whom they act, do not assume or accept any responsibility or liability of whatever nature for any injury or damage whatsoever which may occur.

