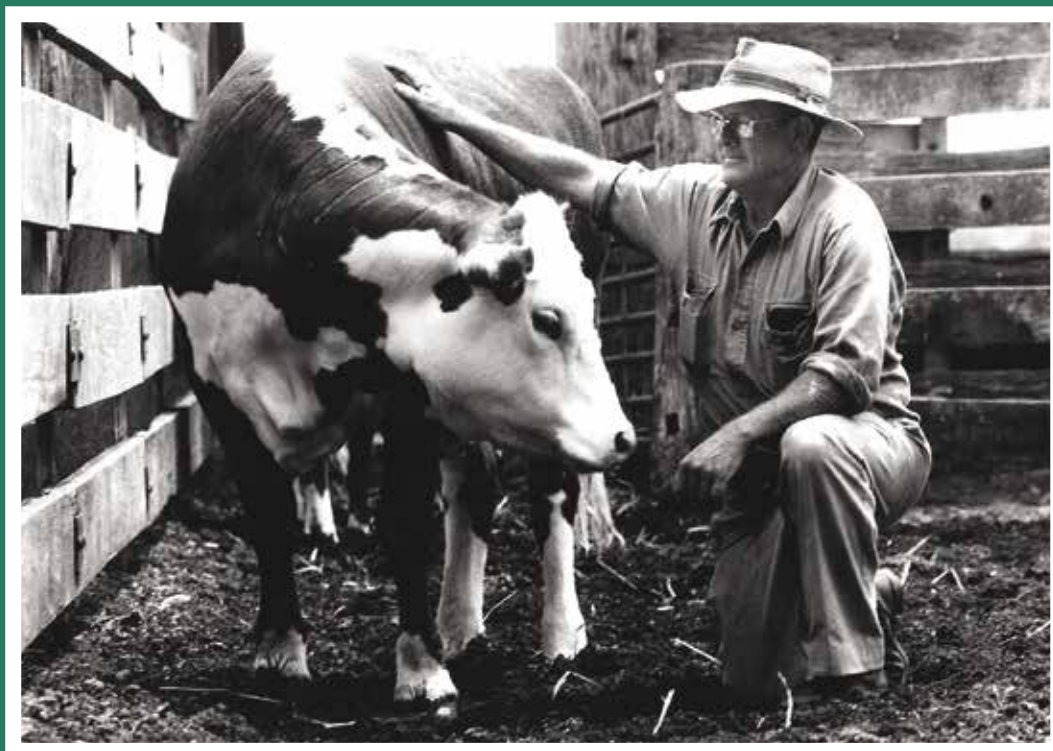


STUART PEAKE MEMORIAL CANCER RESEARCH TRUST



The Stuart Peake Memorial Cancer Research Trust was established in 2003 in memory of the late Stuart Peake, the founding principal of the Bowen Poll Hereford and Angus Studs.

The Late Stuart Peake fought a long battle against the cancer Non Hodgkins Lymphoma.

The main objective of the trust is to donate the income generated by the trust investments to the cause of cancer research.

Since 2003 the trust has donated approximately \$30,000 to cancer research and the trustees intend to continue donating to cancer research not only for Non Hodgkins Lymphoma but all forms of this disease for years to come.

Donations to the fund may be tax deductible depending on the particular circumstances of the business and it is suggested that donors consult their advisors in this regard.

The trustees of the fund would like to acknowledge the work of the Late Tony Crowley who suffered this disease for many years and only recently lost his fight against this form of cancer.

Tony was a driving force in the establishment of this trust.

**For further information please contact:
David Kelly on 02 6782 1403 - Email kelly@djkelly.com.au**

LOTS 1 - 65

65 POLL HEREFORD BULLS

LOT 1

BOWEN HANLEY L137 (S)

BWNL137

Eye Pigment: 100/100 Born: 1/09/2015 Age: 22 mths

HYF, DLF,IEF

Tattoo: L137

ALLENDALE NATIONAL W168 (P)
 BOWEN DIAMANTINA D203 (AI) (P)
 BOWEN MATCHLESS Z152 (AI) (P)
SIRE: BOWEN HANLEY H92 (P)
 BOWEN ARGYLE A355 (AI) (S)
 PEAKES VICTORIA LASS D201 (P)
 AMOR VICTORIA LASS A157 (P)
 HARVIE RAFTSMAN 16R (IMP CAN) (P)
 MAUNGAHINA KINGDOM BAY 070073 (IMP NZL) (P)
 MAUNGAHINA MODESTY T264 (P)
DAM: BOWEN FANCY G196 (AI) (ET) (P)
 KENYA KIDMAN (P)
 BOWEN FANCY X57 (AI) (P)
 BOWEN FANCY U2791 (AI) (P)



GRAND DAM: BOWEN FANCY X57 (AI) (P)

MAY 2017 HEREFORD GROUP BREEDPLAN

CED	CEM	GL	BW	200d	400d	600d	Mcw	Milk	SS	CWT	EMA	Rib	Rump	RBV	IMF	SELECTION INDEXES			
-4.0	-2.9	+0.2	+5.7	+37	+54	+71	+67	+8	+0.9	+46	+2.2	-0.1	-0.4	+0.6	+0.2	SM	Grass	Grain	EU
34%	29%	46%	70%	64%	64%	68%	60%	42%	50%	55%	46%	50%	54%	48%	47%	+\$60	+\$54	+\$60	+\$67

Traits Observed: BWT,200WT,600WT,FAT,EMA,IMF

Notes: Very complete bull to kick off the sale he has natural balance with a sires outlook. Grand dam Fancy X57 has been a great donor cow for us. K175 maternal half brother sold at 2016 Bowen bull sale.

Rated in the top 10% for 200day ebv's.

Purchaser: \$

LOT 2

BOWEN JET FIRE L66 (AI) (P)

BWNL66

Eye Pigment: 100/100 Born: 7/07/2015 Age: 24 mths

HYF, DLF,IEF-PP98%

Tattoo: L66

KOANUI ROCKET 0219 (IMP NZL) (P)
 PINE HILL CROSSFIRE C558 (AI) (P)
 PINE HILL GHOST MAPLE W16 (AI) (P)
SIRE: YAVENVALE JET FIRE J032 (P)
 KURRAJONG PARK B144 (P)
 YAVENVALE EMPRESS G320 (P)
 YAVENVALE EMPRESS C340 (H#)
 BOWEN MINISTER Y168 (S)
 STUDBROOK PRINCE B034 (S)
 BOWEN PRINCESS T65 (P)
DAM: BOWEN MATCHLESS D292 (P)
 ALLENDALE OCTAGONAL (AI) (P)
 BOWEN MATCHLESS Y195 (P)
 BOWEN MATCHLESS V15 (AI) (P)



MAY 2017 HEREFORD GROUP BREEDPLAN

CED	CEM	GL	BW	200d	400d	600d	Mcw	Milk	SS	CWT	EMA	Rib	Rump	RBV	IMF	SELECTION INDEXES			
+2.6	+2.2	-2.4	+3.7	+30	+50	+72	+56	+20	+3.0	+46	+3.2	+0.9	+1.1	+0.6	+0.8	SM	Grass	Grain	EU
37%	28%	72%	72%	66%	65%	69%	61%	44%	47%	55%	46%	51%	55%	49%	49%	+\$95	+\$92	+\$111	+\$106

Traits Observed: GL,CE,BWT,200WT,600WT,FAT,EMA,IMF

Notes: Jet Fire L66 has been a standout since birth. Offering power, capacity, natural balance & performance. He has low actual birth weight to an excellent final 600d weight. From the great Matchless cow family.

Low birth & good EMA, EBV's rated within the breed top 5% scrotal, top 10% G.L & milk, top 15%IMF, top 20% rib fat & indexes, top 25% rump fat & C.E.Dtr.

Purchaser: \$

LOT 3

BOWEN ELVIS L197 (P)

BWNL197

Eye Pigment: 100/100 Born: 3/07/2015 Age: 24 mths HYF, DLF, IEF-PP98% Tattoo: L197

SOUTH BUKALONG WALKER 6 (AI) (P)
 SOUTH BUKALONG WALLACE 2 (P)
 SOUTH BUKALONG VICTORIA 152 (P)

SIRE: YAVENVALE ELVIS E199 (P)

KIDMAN TRIUMPH V179 (AI) (P)
 ONSLOW CORISANDE Z125 (P)
 ONSLOW CORISANDE W23 (H)

DEBARRY EDEN (P)
 BOWEN EL NINO E148 (AI) (ET) (S)
 SVY LAVENDER Y005 (AI) (H)

DAM: BOWEN RUTH H206 (AI) (P)

BOWEN ARGYLE A355 (AI) (S)
 BOWEN RUTH E293 (P)
 BOWEN RUTH Z324 (AI) (P)



MAY 2017 HEREFORD GROUP BREEDPLAN

CED	CEM	GL	BW	200d	400d	600d	Mcw	Milk	SS	CWT	EMA	Rib	Rump	RBV	IMF	SELECTION INDEXES			
+0.8	+3.5	-0.4	+3.7	+37	+57	+84	+65	+19	+2.1	+56	+4.0	+0.4	+0.8	+1.1	+0.5	SM	Grass	Grain	EU
36%	30%	57%	72%	66%	65%	69%	60%	39%	49%	58%	49%	52%	57%	49%	51%	+\$104	+\$99	+\$113	+\$113

Traits Observed: CE, BWT, 200WT, 600WT, FAT, EMA, IMF

Notes: Outcross pedigree with excellent eye setting, skin & hair type. Outstanding weight for age. Sire Elvis has been in the HAL BIN progeny test program & performed well.

EBV's rated within the breed top 10% 200d & milk, top 15% carc.wt & all indexes. Top 20% 400, 600d & EMA. Low birth good Rib, rump, RBV & IMF.

Purchaser: \$

LOT 4

BOWEN GWYDIR L41 (S)

BWNL41

Eye Pigment: 100/100 Born: 15/08/2015 Age: 23 mths HYF, DLF, IEF-PH98% Tattoo: L41

ALLENDALE NATIONAL W168 (P)
 BOWEN DIAMANTINA D203 (AI) (P)
 BOWEN MATCHLESS Z152 (AI) (P)

SIRE: BOWEN GWYDIR G222 (AI) (ET) (P)

KENYA LEGION 6 (AI) (P)
 BOWEN ROLLINA Y186 (AI) (P)
 BOWEN ROLLINA U278 (AI) (P)

BOWEN TORNADO Z260 (AI) (ET) (P)
 RILO PARK UNSHAKEABLE (AI) (ET) (P)
 BOWEN MATCHLESS L140 (AI) (P)

DAM: PEAKES HUMBLE E165 (AI) (P)

ALLENDALE ROCKHAMPTON (P)
 AMOR HUMBLE B52 (P)
 KYILLA PARK HUMBLE (H)



MAY 2017 HEREFORD GROUP BREEDPLAN

CED	CEM	GL	BW	200d	400d	600d	Mcw	Milk	SS	CWT	EMA	Rib	Rump	RBV	IMF	SELECTION INDEXES			
-3.8	-5.3	+1.1	+7.4	+38	+62	+94	+92	+10	+2.2	+54	+3.0	-0.8	-1.5	+1.4	+0.4	SM	Grass	Grain	EU
36%	30%	53%	73%	67%	66%	70%	61%	43%	45%	56%	47%	52%	56%	50%	50%	+\$81	+\$72	+\$88	+\$92

Traits Observed: CE, BWT, 200WT, 600WT, FAT, EMA, IMF

Notes: Power packed Gwydir G222 son with a tremendous hind quarter, style, balance & sires outlook. He offers pure weight gain & performance.

EBV's rated within the breed top 5% 600d & MCW, top 10% 200 & 400d, top 15% RBV & top 20% carc.wt. Good IMF & indexes.

Purchaser: \$

LOT 5

BOWEN CALIBRE L150 (P)

BWNL150

Eye Pigment: 100/100 Born: 2/08/2015 Age: 23 mths HYF, DLF, IEF-PP98% Tattoo: L150

ALLENDALE VAGABOND A74 (AI) (P)
 ALLENDALE WATERHOUSE D1 (P)
 ALLENDALE MARLINE X185 (P)

SIRE: DAYS CALIBRE G74 (P)

ALLENDALE ROBIN HOOD Z239 (P)
 ALLENDALE DAWN C62 (AI) (P)
 ALLENDALE DAWN A150 (AI) (ET) (P)

ALLENDALE NATIONAL W168 (P)
 BOWEN CHELMSFORD C154 (AI) (P)
 BOWEN ROLLINA Z258 (AI) (ET) (P)

DAM: BOWEN MATCHLESS E27 (P)

KENYA KIDMAN (P)
 BOWEN MATCHLESS B387 (AI) (P)
 BOWEN MATCHLESS Y188 (P)



MAY 2017 HEREFORD GROUP BREEDPLAN

CED	CEM	GL	BW	200d	400d	600d	Mcw	Milk	SS	CWT	EMA	Rib	Rump	RBV	IMF	SELECTION INDEXES			
-1.2	+2.7	-0.7	+6.2	+39	+62	+89	+87	+7	+3.2	+56	+5.1	+0.0	+0.2	+1.3	+1.2	SM	Grass	Grain	EU
46%	40%	57%	75%	70%	69%	73%	65%	54%	57%	60%	52%	55%	60%	53%	55%	+\$105	+\$101	+\$127	+\$122

Traits Observed: CE, BWT, 200WT, 600WT, FAT, EMA, IMF

Notes: Top sire potential in this Calibre son, he is later maturing & will grow into a tremendous bull. He has length, growth & natural balance. H138 & K064 maternal half brothers sold in Previous Bowen Bull Sales.

EBV's rated within the breed top 5% scrotal, EMA & IMF, top 10% 200 to 600d, Mat. Cow wt & all Indexes. Top 15% carc wt.

Purchaser: \$

LOT 6

BOWEN JET FIRE L62 (P)

BWNL62

Eye Pigment: 100/100 Born: 4/08/2015 Age: 23 mths HYF, DLF, IEF-PP98% Tattoo: L62

KOANUI ROCKET 0219 (IMP NZL) (P)
 PINE HILL CROSSFIRE C558 (AI) (P)
 PINE HILL GHOST MAPLE W16 (AI) (P)

SIRE: YAVENVALE JET FIRE J032 (P)

KURRAJONG PARK B144 (P)
 YAVENVALE EMPRESS G320 (P)
 YAVENVALE EMPRESS C340 (H#)

KARINA CHERRY Z8 (P)
 TYCOLAH JOVIAL F77 (P)
 TYCOLAH COUNTESS W48 (P)

DAM: BOWEN MATCHLESS J274 (AI) (ET) (P)

DR TRANSCENDENT (IMP USA) (IMP USA) (P)
 BOWEN MATCHLESS Z152 (AI) (P)
 BOWEN MATCHLESS W406 (AI) (ET) (P)



SIRE: YAVENVALE JET FIRE J032 (P)

MAY 2017 HEREFORD GROUP BREEDPLAN

CED	CEM	GL	BW	200d	400d	600d	Mcw	Milk	SS	CWT	EMA	Rib	Rump	RBV	IMF	SELECTION INDEXES			
+0.1	+1.7	+0.0	+6.5	+45	+73	+103	+85	+20	+3.0	+67	+2.9	+0.0	-0.3	+1.1	+0.5	SM	Grass	Grain	EU
38%	30%	52%	71%	65%	64%	67%	58%	39%	49%	54%	45%	48%	53%	47%	47%	+\$112	+\$104	+\$122	+\$122

Traits Observed: CE, BWT, 200WT, 600WT, FAT, EMA, IMF

Notes: High growth later maturing sire, some top performers in this fellows pedigree with donor Dam Matchless Z152 & Tycolah Jovial F77 Supreme Champion Sydney RAS & Grand Champion Dubbo National 2012.

EBV's rated within the breed top 1% 200 to 600d, top 5% scrotal & carc.wt, top 10% MCW, milk & all indexes. Good IMF.

Purchaser: \$

LOT 7

BOWEN EVEREADY L89 (P)

BWNL89

Eye Pigment: 100/100 Born: 9/08/2015 Age: 23 mths HYF, DLF, IEF-PP98% Tattoo: L89

SKY 236G PREMIER 132K (P)
 OTAPAWA SKYMATE 2046 (IMP NZL) (ET) (P)
 OTAPAWA LEONORA P23 (IMP NZL) (P)
SIRE: BRAYBOOK EVEREADY E385 (AI) (ET) (P)
 VALMA SOUTHERN STAR (AI) (ET) (P)
 BOWEN PRINCESS U130 (P)
 BOWEN PRINCESS P146 (P)

KENYA KIDMAN (P)
 BOWEN ARGYLE A355 (AI) (S)
 BOWEN VIRTUE S307 (P)
DAM: PEAKES VICTORIA LASS D201 (P)
 BOWEN STU-GRADON W404 (S)
 AMOR VICTORIA LASS A157 (P)
 AMOR VICTORIA LASS X28 (P)



MAY 2017 HEREFORD GROUP BREEDPLAN

CED	CEM	GL	BW	200d	400d	600d	Mcw	Milk	SS	CWT	EMA	Rib	Rump	RBV	IMF	SELECTION INDEXES			
-8.3	+1.9	-0.3	+5.8	+31	+44	+68	+64	+17	+0.8	+42	+3.6	+1.1	+1.4	+0.5	+1.0	SM	Grass	Grain	EU
39%	32%	44%	73%	67%	66%	70%	61%	47%	53%	57%	48%	52%	56%	50%	51%	+\$73	+\$70	+\$90	+\$85

Traits Observed: CE, BWT, 200WT, 600WT, FAT, EMA, IMF

Notes: Smooth high yielding carcass sire with style & balance. Maternal half brother Bowen Hanley H92 has been retained at "Bowen" as a Stud Sire.

EBV's rated within the breed top 10% IMF, top 15% rib & rump fats, top 25% milk.

Purchaser: \$

LOT 8

BOWEN CALIBRE L111 (P)

BWNL111

Eye Pigment: 100/100 Born: 1/08/2015 Age: 23 mths HYF, DLF, IEF-PP98% Tattoo: L111

ALLENDALE VAGABOND A74 (AI) (P)
 ALLENDALE WATERHOUSE D1 (P)
 ALLENDALE MARLINE X185 (P)
SIRE: DAYS CALIBRE G74 (P)
 ALLENDALE ROBIN HOOD Z239 (P)
 ALLENDALE DAWN C62 (AI) (P)
 ALLENDALE DAWN A150 (AI) (ET) (P)

BRAXTON WESTWIND 120M (IMP NZL) (P)
 BOWEN URIARRA U96 (AI) (ET) (P)
 CORTINA FLORRIE (AI) (P)
DAM: BOWEN KAREN Z321 (P)
 BOWEN MAGNIFICENT M160 (P)
 BOWEN KAREN R002 (P)
 BOWEN KAREN M221 (P)



MAY 2017 HEREFORD GROUP BREEDPLAN

CED	CEM	GL	BW	200d	400d	600d	Mcw	Milk	SS	CWT	EMA	Rib	Rump	RBV	IMF	SELECTION INDEXES			
-1.1	+1.8	+1.7	+7.0	+37	+60	+91	+101	+6	+3.4	+52	+4.5	-0.8	-1.3	+1.8	+0.6	SM	Grass	Grain	EU
47%	40%	59%	75%	70%	70%	73%	65%	56%	58%	61%	53%	56%	61%	55%	56%	+\$94	+\$87	+\$104	+\$110

Traits Observed: CE, BWT, 200WT, 600WT, FAT, EMA, IMF

Notes: Exhibiting length & depth with a smooth stylish Calibre profile. Maternal brother J105 sold in 2015 Bowen Bull sale, maternal sister F254 sold in 2015 Golden Anniversary Female sale.

EBV's rated within the breed top 5% mat.cow wt, scrotal & RBV, top 10% 200, 600d & EMA, top 15% 400d. Carcass wt, IMF & all indexes top 15% or better.

Purchaser: \$

LOT 9

BOWEN REVOLUTION L270 (AI) (P)

BWNL270

Eye Pigment: 100/100 Born: 27/09/2015 Age: 21 mths HYF, DLF,IEF-PP98% Tattoo: L270

FELTONS DOMINO 774 (P)
 FELTONS LEGEND 242 (IMP USA) (P)
 FELTONS G15 (P)
SIRE: MSU TCF REVOLUTION 4R (IMP USA) (P)
 REMITALL ONLINE 122L (IMP CAN) (P)
 MSU TCF RACHAEL ET 54N (P)
 HH MISS ADV 786G 1ET (H)



BRIDGE POWERPLAY (AI) (ET) (S)
 DEBARRY HIGHLANDER 2 (AI) (S)
 DEBARRY LAST DAY T103 (P)
DAM: BOWEN ROLLINA B347 (P)
 BOWEN VINCENT V1 (S)
 BOWEN ROLLINA X322 (P)
 BOWEN ROLLINA U121 (P)

MAY 2017 HEREFORD GROUP BREEDPLAN

CED	CEM	GL	BW	200d	400d	600d	Mcw	Milk	SS	CWT	EMA	Rib	Rump	RBV	IMF	SELECTION INDEXES			
+3.6	+3.5	-9.1	+3.8	+37	+62	+84	+81	+16	+2.8	+64	+5.2	+0.4	-0.2	+1.3	+0.2	SM	Grass	Grain	EU
47%	39%	75%	72%	68%	68%	67%	62%	58%	57%	58%	52%	56%	59%	53%	56%	+\$103	+\$97	+\$107	+\$115

Traits Observed: GL,BWT,200WT,400WT,FAT,EMA,IMF

Notes: Revolution L270 has excellent length, structure and soundness. Top Pedigree, his donor dam Rollina B347 is a tremendous cow and the Revolution 4R females we had seen in USA/Canada were great matrons. Maternal brother J047 sold at 2015 Bowen bull sale and is a maternal half brother to Bowen Esplanade E332 sold to Remolea Stud.

EBV's rated within the breed top 1% G.L, top 5% EMA, top 10% 200d,400d & scrotal, top 15% C.E.Dtr & Mat. cow wt, top 20% 600d & RBV. All indexes top 20% or better.

Purchaser: \$

LOT 10

BOWEN GWYDIR L215 (P)

BWNL215

Eye Pigment: 100/100 Born: 30/09/2015 Age: 21 mths HYF, DLF,IEF-PP98% Tattoo: L215

ALLENDALE NATIONAL W168 (P)
 BOWEN DIAMANTINA D203 (AI) (P)
 BOWEN MATCHLESS Z152 (AI) (P)
SIRE: BOWEN GWYDIR G222 (AI) (ET) (P)
 KENYA LEGION 6 (AI) (P)
 BOWEN ROLLINA Y186 (AI) (P)
 BOWEN ROLLINA U278 (AI) (P)



BRAXTON GIANT THUNDER S138 (IMP NZL) (P)
 BOWEN TORNADO Z260 (AI) (ET) (P)
 BOWEN TRICEL P180 (P)
DAM: BOWEN PRINCESS E99 (P)
 DEBARRY HIGHLANDER 2 (AI) (S)
 BOWEN PRINCESS A71 (P)
 BOWEN PRINCESS U130 (P)

SIRE: BOWEN GWYDIR G222 (AI) (ET) (P)

MAY 2017 HEREFORD GROUP BREEDPLAN

CED	CEM	GL	BW	200d	400d	600d	Mcw	Milk	SS	CWT	EMA	Rib	Rump	RBV	IMF	SELECTION INDEXES			
-3.9	-4.5	+1.9	+6.5	+38	+58	+86	+79	+10	+2.2	+52	+2.8	-0.1	-0.4	+0.8	+0.6	SM	Grass	Grain	EU
39%	34%	50%	72%	66%	65%	64%	58%	44%	50%	54%	48%	52%	56%	50%	51%	+\$83	+\$76	+\$94	+\$95

Traits Observed: BWT,200WT,400WT,FAT,EMA,IMF

Notes: Top performing Gwydir G222 son, soft easy doing, excellent temperament & ticks all the boxes for Style & Structure. Maternal half brothers H152 & K097 sold at Bowen bull sales.

Good indexes. EBV's rated within the breed top 10% 200d. Top 15% 600d. Top 20% 400d & mat. cow wt. Top 25% scrotal, carc.wt & IMF.

Purchaser: \$

LOT 11

BOWEN SPARK L76 (AI) (P)

BWNL76

Eye Pigment: 100/100

Born: 18/07/2015

Age: 24 mths

Tattoo: L76

OTAPAWA SPARK 3060 (ET) (IMP NZL) (AI) (ET) (P)
 GRASSMERE SPARK 330 (P)
 GRASSMERE PRINCESS 195 (P)
SIRE: GRASSMERE SPARK 555 (IMP NZL) (P)
 GRASSMERE NIBBS 991 (P)
 GRASSMERE PRINCESS 245 (P)
 GRASSMERE PRINCESS 60 (P)



KENYA KIDMAN (P)
 BOWEN BECKER B32 (AI) (P)
 BOWEN HILDA T287 (P)
DAM: BOWEN LEONORA E117 (P)
 MONYMUSK DISCOVERY L34 (IMP NZL) (P)
 BOWEN LEONORA B168 (AI) (ET) (P)
 OTAPAWA LEONORA P23 (IMP NZL) (P)

MAY 2017 HEREFORD GROUP BREEDPLAN

CED	CEM	GL	BW	200d	400d	600d	Mcw	Milk	SS	CWT	EMA	Rib	Rump	RBV	IMF	SELECTION INDEXES			
-6.2	+3.3	+0.9	+5.8	+34	+55	+80	+72	+11	+0.9	+49	+3.4	+2.5	+3.6	-0.9	+2.1	SM	Grass	Grain	EU
50%	43%	75%	74%	70%	69%	73%	67%	59%	57%	62%	53%	57%	61%	55%	56%	+\$95	+\$93	+\$128	+\$105

Traits Observed: GL, CE, BWT, 200WT, 600WT, FAT, EMA, IMF

Notes: His pedigree consists of three quarter New Zealand bloodlines, his sire Spark 555 is a trait leader for IMF. Spark L76 has tremendous volume, depth & doing ability, note his soft loose skin, suit the breeder with crossbreeding enterprise. Half brother sold in the 2014 Bowen bull sale.

EBV's rated within the breed top 1% IMF, rib & rump fat, top 20% C.E.Dtrs & all indexes, top 25% 200d & 600d.

Purchaser: \$

LOT 12

BOWEN CALIBRE L161 (P)

BWNL161

Eye Pigment: 100/100

Born: 15/08/2015

Age: 23 mths

HYF, DLF, IEF-PP98% Tattoo: L161

ALLENDALE VAGABOND A74 (AI) (P)
 ALLENDALE WATERHOUSE D1 (P)
 ALLENDALE MARLINE X185 (P)
SIRE: DAYS CALIBRE G74 (P)
 ALLENDALE ROBIN HOOD Z239 (P)
 ALLENDALE DAWN C62 (AI) (P)
 ALLENDALE DAWN A150 (AI) (ET) (P)



OTAPAWA SKYMATE 2046 (IMP NZL) (ET) (P)
 BRAYBOOK CHEROKEE C200 (AI) (P)
 TYCOLAH DOMINETTE Y56 (P)
DAM: BOWEN HARMONY F27 (P)
 MONREID YALE (H)
 BOWEN HARMONY B279 (H)
 MONREID HARMONY T523 (H)

FULL BROTHER TO LOT 12 - BOWEN CALIBRE K68 (ABOVE), SOLD TO BILL FISHER, COONAMBLE IN 2016 SALE.

MAY 2017 HEREFORD GROUP BREEDPLAN

CED	CEM	GL	BW	200d	400d	600d	Mcw	Milk	SS	CWT	EMA	Rib	Rump	RBV	IMF	SELECTION INDEXES			
-2.1	+3.0	+0.0	+5.8	+33	+57	+78	+83	+7	+2.8	+50	+5.9	+0.6	+1.0	+1.1	+1.3	SM	Grass	Grain	EU
44%	37%	54%	74%	69%	68%	72%	65%	51%	55%	59%	50%	54%	59%	52%	54%	+\$97	+\$94	+\$121	+\$114

Traits Observed: CE, BWT, 200WT, 600WT, FAT, EMA, IMF

Notes: Dam Harmony F27 is in Donor program at "Bowen". J108 maternal half brother sold at 2015 Bowen Bull Sale, K068 full brother sold at Bowen bull sale 2016.

EBV's rated within the breed top 5% IMF, top 10% scrotal & EMA, top 15% mat.cow wt. top 20% 400d, good Rib & Rump fats. All indexes top 20% or better.

Purchaser: \$

LOT 13

BOWEN TRUST L7 (AI) (S)

BWNL7

Eye Pigment: 100/100 Born: 12/08/2015 Age: 23 mths

HYF, DLF, IEF

Tattoo: L7

RRH MR FELT 3008 (IMP USA) (P)
 KCF BENNETT 3008 M326 (P)
 KCF MISS 459 F284 (P)
SIRE: NJW 73S M326 TRUST 100W ET (IMP USA) (ET) (P)
 PW VICTOR BOOMER P606 (P)
 NJW P606 72N DAYDREAM 73S (P)
 NJW 94J DEW 72N (P)



BBSF 3K RANCHMAN 18R (IMP CAN) (P)
 BOWEN COWBOY C245 (AI) (ET) (P)
 BOWEN ROLLINA N61 (P)
DAM: BOWEN ADVANCE G292 (P)
 MERRANLEE SUNDANCE S55 (AI) (P)
 BOWEN ADVANCE Z263 (AI) (ET) (P)
 BOWEN ADVANCE Q122 (P)

MAY 2017 HEREFORD GROUP BREEDPLAN

CED	CEM	GL	BW	200d	400d	600d	Mcw	Milk	SS	CWT	EMA	Rib	Rump	RBV	IMF	SELECTION INDEXES			
+0.2	+3.5	+3.2	+4.2	+34	+61	+85	+66	+19	+2.4	+59	+5.7	+1.0	+1.1	+1.1	+0.6	SM	Grass	Grain	EU
41%	33%	74%	74%	69%	68%	71%	63%	53%	54%	58%	50%	53%	56%	50%	52%	+\$106	+\$101	+\$119	+\$116

Traits Observed: GL, CE, BWT, 200WT, 600WT, FAT, EMA, IMF

Notes: Trust has an outcross pedigree with excellent carcass. Trust is from the renowned NJW herd & is one of the superior sire lines we saw when travelling in USA & Canada. The Trust females were terrific breeding cows.

EBV's rated within the breed top 5% EMA, top 10% milk & carc.wt, top 15% all indexes, 400d, 600d & rib fat, top 20% scrotal, top 25% 200d, rump fat, RBV & IMF.

Purchaser: \$

LOT 14

BOWEN TRUST L234 (AI) (P)

BWNL234

Eye Pigment: 100/100 Born: 9/10/2015 Age: 22 mths

HYF, DLF, IEF-PP98% Tattoo: L234

RRH MR FELT 3008 (IMP USA) (P)
 KCF BENNETT 3008 M326 (P)
 KCF MISS 459 F284 (P)
SIRE: NJW 73S M326 TRUST 100W ET (IMP USA) (ET) (P)
 PW VICTOR BOOMER P606 (P)
 NJW P606 72N DAYDREAM 73S (P)
 NJW 94J DEW 72N (P)



BOWEN VINCENT V1 (S)
 DEBARRY EDEN (P)
 DEBARRY PURITY V50 (AI) (ET) (P)
DAM: BOWEN RUTH E321 (AI) (P)
 TYCOLAH ZORRO (P)
 BOWEN RUTH B31 (AI) (P)
 BOWEN RUTH V207 (AI) (P)

DAM: BOWEN RUTH E321 (AI) (P)

MAY 2017 HEREFORD GROUP BREEDPLAN

CED	CEM	GL	BW	200d	400d	600d	Mcw	Milk	SS	CWT	EMA	Rib	Rump	RBV	IMF	SELECTION INDEXES			
+3.1	+4.0	+0.3	+3.1	+33	+60	+89	+66	+27	+2.1	+67	+6.3	+0.9	+0.8	+1.3	+1.0	SM	Grass	Grain	EU
42%	34%	75%	72%	68%	67%	66%	59%	53%	55%	56%	51%	54%	57%	51%	54%	+\$121	+\$117	+\$142	+\$132

Traits Observed: GL, BWT, 200WT, 400WT, FAT, EMA, IMF

Notes: Excellent pigment on this young sire, he has been a stand out since birth. He has excellent, feet & structure. His pedigree contains top shelf genetics, Donor dam E321 (see Photo) is a terrific female. Semen has been retained for use at "Bowen" H054 maternal half brother sold at 2014 Bowen bull sale to Doodle Cooma Stud.

EBV's rated within the breed top 1% milk & EMA, top 5% all indexes & carc. wt, top 10% 600d & IMF, top 15% 400d, top 20% rib fat & RBV, top 25% B.W.

Purchaser: \$

LOT 15

BOWEN CALIBRE L253 (AI) (ET) (P)

BWNL253

Eye Pigment: 100/100 Born: 10/09/2015 Age: 22 mths HYF, DLF, IEF-PP98% Tattoo: L253

ALLEDALE VAGABOND A74 (AI) (P)
 ALLEDALE WATERHOUSE D1 (P)
 ALLEDALE MARLINE X185 (P)
SIRE: DAYS CALIBRE G74 (P)
 ALLEDALE ROBIN HOOD Z239 (P)
 ALLEDALE DAWN C62 (AI) (P)
 ALLEDALE DAWN A150 (AI) (ET) (P)

KOANUI ROCKET Q334 (P)
 KOANUI ROCKET 0219 (IMP NZL) (P)
 KOANUI ANGEL R187 (P)
DAM: BOWEN KATIE G100 (AI) (P)
 BOWEN ARGYLE A355 (AI) (S)
 BOWEN KATIE D236 (P)
 BOWEN KATIE A336 (P)



DAM: BOWEN KATIE G100 (AI) (P)

MAY 2017 HEREFORD GROUP BREEDPLAN

CED	CEM	GL	BW	200d	400d	600d	Mcw	Milk	SS	CWT	EMA	Rib	Rump	RBV	IMF	SELECTION INDEXES			
+4.2	+6.3	+0.1	+2.7	+32	+57	+78	+78	+9	+3.3	+56	+4.8	+1.3	+2.2	+0.4	+1.4	SM	Grass	Grain	EU
48%	43%	62%	69%	65%	63%	64%	59%	51%	58%	55%	48%	50%	54%	49%	53%	+\$114	+\$112	+\$136	+\$127

Traits Observed: BWT,200WT,600WT,FAT,EMA,IMF

Notes: Low birth Calibre G74 son with a high final weight. Excellent growth & soft skin & hair type. (See photo of his Donor Dam Katie G100). K191 maternal half brother sold at 2016 Bowen bull sale.

EBV's rated within the breed top 5% All indexes C.E.Dtr, scrotal rump fat & IMF, top 10% EMA & rib fat. Top 15% carc. wt, top 20%B.W. 400d & Mat. cow wt.

Purchaser: \$

LOT 16

BOWEN COWBOY L5 (P)

BWNL5

Eye Pigment: 100/100 Born: 2/08/2015 Age: 23 mths HYF, DLF, IEF-PP98% Tattoo: L5

DXB 7C BLOCKBUSTER 3K (IMP CAN) (P)
 BBSF 3K RANCHMAN 18R (IMP CAN) (P)
 BBSF 610F CINDY 86L (P)
SIRE: BOWEN COWBOY C245 (AI) (ET) (P)
 VALMA SOUTHERN STAR (AI) (ET) (P)
 BOWEN ROLLINA N61 (P)
 BOWEN ROLLINA D23 (AI) (P)

BOWEN TORNADO Z260 (AI) (ET) (P)
 RILO PARK UNSHAKEABLE (AI) (ET) (P)
 BOWEN MATCHLESS L140 (AI) (P)
DAM: BOWEN FANCY E94 (AI) (P)
 KENYA KIDMAN (P)
 BOWEN FANCY X57 (AI) (P)
 BOWEN FANCY U2791 (AI) (P)



SIRE: BOWEN COWBOY C245 (AI) (ET) (P)

MAY 2017 HEREFORD GROUP BREEDPLAN

CED	CEM	GL	BW	200d	400d	600d	Mcw	Milk	SS	CWT	EMA	Rib	Rump	RBV	IMF	SELECTION INDEXES			
-3.0	+2.2	-2.4	+6.0	+35	+55	+73	+68	+11	+1.4	+43	+3.2	+0.2	-0.1	+0.9	+0.3	SM	Grass	Grain	EU
44%	36%	62%	74%	70%	69%	72%	65%	57%	57%	60%	51%	55%	60%	53%	55%	+\$75	+\$70	+\$82	+\$86

Traits Observed: CE,BWT,200WT,600WT,FAT,EMA,IMF

Notes: Long bodied Cowboy son, this pedigree combines some of our favourite donor cows with Fancy X57, Matchless L140 & Rollina N61. Maternal half brothers H040 & J067 sold at previous Bowen bull sales.

EBV's rated within the breed top 10% for short gestation length, good EMA.

Purchaser: \$

LOT 17

BOWEN REVOLUTION L185 (AI) (P)

BWNL185

Eye Pigment: 100/75 Born: 2/07/2015 Age: 24 mths HYF, DLF, IEF-PP98% Tattoo: L185

FELTONS DOMINO 774 (P)
 FELTONS LEGEND 242 (IMP USA) (P)
 FELTONS G15 (P)
SIRE: MSU TCF REVOLUTION 4R (IMP USA) (P)
 REMITALL ONLINE 122L (IMP CAN) (P)
 MSU TCF RACHAEL ET 54N (P)
 HH MISS ADV 786G 1ET (H)

BBSF 3K RANCHMAN 18R (IMP CAN) (P)
 BOWEN COWBOY C245 (AI) (ET) (P)
 BOWEN ROLLINA N61 (P)
DAM: BOWEN RUTH H146 (P)
 BOWEN VINCENT V1 (S)
 BOWEN RUTH A237 (P)
 BOWEN RUTH X178 (P)

MAY 2017 HEREFORD GROUP BREEDPLAN

CED	CEM	GL	BW	200d	400d	600d	Mcw	Milk	SS	CWT	EMA	Rib	Rump	RBV	IMF	SELECTION INDEXES			
+1.3	+3.5	-2.6	+4.7	+35	+56	+76	+66	+15	+2.0	+55	+5.8	+0.7	+0.3	+1.6	+0.1	SM	Grass	Grain	EU
44%	35%	73%	73%	68%	67%	70%	62%	54%	54%	58%	50%	53%	56%	50%	52%	+\$95	+\$91	+\$100	+\$108

Traits Observed: GL, CE, BWT, 200WT, 600WT, FAT, EMA, IMF

Notes: This Revolution 4R son has a high muscle content a real 'Meat Machine'. He would breed excellent early maturing weaners & supermarket type progeny.

EBV's rated within the breed top 5% EMA, top 10% G.L & RBV, top 15% carc.wt & C.E. dtr. Top 20% 200d. All indexes top 25% or better.

Purchaser: \$

LOT 18

BOWEN SPARK L85 (AI) (P)

BWNL85

Eye Pigment: 100/100 Born: 10/07/2015 Age: 24 mths PP 98% Tattoo: L85

ALLENDALE MUSKETEER (AI) (S)
 STUDBROOK D'ARTAGNION V086 (AI) (ET) (S)
 BOWEN TRICEL P180 (P)
SIRE: OTAPAWA SPARK 3060 (ET) (IMP NZL) (AI) (ET) (P)
 MONYMUSK DISCOVERY L34 (IMP NZL) (P)
 OTAPAWA SPOT P30 (P)
 OTAPAWA SPOT L44 (P)

VALMA SOUTHERN STAR (AI) (ET) (P)
 BOWEN VINCENT V1 (S)
 BOWEN PRINCESS P146 (P)
DAM: BOWEN RUTH A237 (P)
 MERRANLEE SUNDANCE S55 (AI) (P)
 BOWEN RUTH X178 (P)
 BOWEN RUTH R258 (AI) (ET) (S)

MAY 2017 HEREFORD GROUP BREEDPLAN

CED	CEM	GL	BW	200d	400d	600d	Mcw	Milk	SS	CWT	EMA	Rib	Rump	RBV	IMF	SELECTION INDEXES			
+2.7	+4.4	-1.9	+4.1	+35	+56	+80	+89	+17	+2.3	+54	+2.4	+1.0	+1.5	-0.4	+1.0	SM	Grass	Grain	EU
55%	52%	74%	74%	70%	70%	68%	64%	61%	59%	61%	58%	59%	62%	58%	58%	+\$103	+\$98	+\$116	+\$114

Traits Observed: GL, CE, BWT, 200WT, 400WT, FAT, EMA, IMF

Notes: Quality sire, soft excellent structure and doing ability. Pedigree stacked with great cows and breed leading sires. Low actual birth weight of 34kg. Maternal brother sold in 2013 Bowen bull sale.

Low B.W, EBV's rated within the breed top 10% C.E.Dtrs, MCW & IMF, top 15% G.L, rib & rump fat, top 20% 200d & scrotal, top 25% C.E.Dir, 400d, 600d & milk. All indexes top 20% or better.

Purchaser: \$

LOT 19

BOWEN SPARK L11 (AI) (P)

BWNL11

Eye Pigment: 100/100 Born: 4/08/2015 Age: 23 mths PP 98% Tattoo: L11

ALLENDALE MUSKETEER (AI) (S)
 STUDBROOK D'ARTAGNION V086 (AI) (ET) (S)
 BOWEN TRICEL P180 (P)
SIRE: OTAPAWA SPARK 3060 (ET) (IMP NZL) (AI) (ET) (P)
 MONYMUSK DISCOVERY L34 (IMP NZL) (P)
 OTAPAWA SPOT P30 (P)
 OTAPAWA SPOT L44 (P)

KOANUI ROCKET 0219 (IMP NZL) (P)
 PEAKES BENTLEY B166 (AI) (ET) (P)
 WONDAI FANCY S15 (AI) (P)
DAM: BOWEN MATCHLESS F243 (P)
 HILLS-GALORE HUMMER 118M (IMP CAN) (P)
 BOWEN MATCHLESS C160 (AI) (P)
 BOWEN MATCHLESS Z254 (AI) (ET) (P)

MAY 2017 HEREFORD GROUP BREEDPLAN

CED	CEM	GL	BW	200d	400d	600d	Mcw	Milk	SS	CWT	EMA	Rib	Rump	RBV	IMF	SELECTION INDEXES			
+1.9	+4.2	-4.7	+4.4	+37	+62	+91	+110	+16	+1.8	+66	+3.6	+1.5	+2.1	-0.6	+1.7	SM	Grass	Grain	EU
52%	48%	74%	73%	69%	69%	69%	65%	58%	58%	61%	57%	60%	63%	58%	58%	+\$111	+\$106	+\$130	+\$121

Traits Observed: GL, CE, BWT, 200WT, 400WT, FAT, EMA, IMF

Notes: Otapawa Spark son from our best Bentley B166 daughter. This sire oozes quality with his soft loose skin. Out cross pedigree with a high content of NZ bloodlines. Excellent data.

EBV's rated within the breed top 1% mat.cow wt & IMF, top 5% gestation length, carc.wt, rib & rump fat, top 10% 200,400,600d, rib, rump fat & all indexes. Good milk & EMA.

Purchaser: \$

LOT 20

BOWEN JET FIRE L193 (AI) (S)

BWNL193

Eye Pigment: 100/100 Born: 6/07/2015 Age: 24 mths PH 98% Tattoo: L193

KOANUI ROCKET 0219 (IMP NZL) (P)
 PINE HILL CROSSFIRE C558 (AI) (P)
 PINE HILL GHOST MAPLE W16 (AI) (P)
SIRE: YAVENVALE JET FIRE J032 (P)
 KURRAJONG PARK B144 (P)
 YAVENVALE EMPRESS G320 (P)
 YAVENVALE EMPRESS C340 (H#)

MOUNTAIN VALLEY ROCKYNED B1 (P)
 CASCADE EL DORADO E27 (P)
 CASCADE IRISH MAID A37 (AI) (P)
DAM: BOWEN ROLLINA H22 (AI) (S)
 SMITHSTON WEE DRAM ET1 (AI) (ET) (H)
 BOWEN ROLLINA Z132 (AI) (P)
 BOWEN ROLLINA P197 (P)

MAY 2017 HEREFORD GROUP BREEDPLAN

CED	CEM	GL	BW	200d	400d	600d	Mcw	Milk	SS	CWT	EMA	Rib	Rump	RBV	IMF	SELECTION INDEXES			
+1.2	+1.1	+0.5	+4.0	+34	+60	+83	+72	+18	+2.6	+53	+2.9	+0.3	+0.5	+0.7	+0.7	SM	Grass	Grain	EU
38%	29%	73%	71%	65%	65%	63%	55%	41%	48%	52%	47%	50%	54%	48%	48%	+\$97	+\$92	+\$109	+\$106

Traits Observed: GL, CE, BWT, 200WT, 400WT, FAT, EMA, IMF

Notes: Outstanding Jet Fire son with length, strength & weight for age. Very moderate birth weight yet tonnes of growth. Big testicles & tight sheath.

EBV's rated within the breed top 15% 400d, milk & scrotal. Top 20% 600d, carc.wt & IMF, top 25% 200d. Indexes all in top 20% or better.

Purchaser: \$

LOT 21

BOWEN OPIUM L188 (P)

BWNL188

Eye Pigment: 100/100 Born: 26/06/2015 Age: 24 mths PP 98% Tattoo: L188

BT MOHICAN TRADITION 530 (IMP USA) (P)
 MSU OPTIMUM Z03 (IMP USA) (P)
 MSU MISS RIVAL X10 (P)
SIRE: HEATHERDALE OPIUM U78 (AI) (P)
 DR TRANSCENDENT (IMP USA) (IMP USA) (P)
 NEILPO MARITANA 29 (P)
 NEILPO MARITANA 4 (P)

ALLENDALE NATIONAL W168 (P)
 BOWEN DIAMANTINA D203 (AI) (P)
 BOWEN MATCHLESS Z152 (AI) (P)
DAM: BOWEN MINERVA H243 (P)
 BOWEN VALOUR V39 (AI) (P)
 BOWEN MINERVA Z212 (P)
 LYNLAND MINERVA P27 (P)

MID PARENT EBVS - MAY 2017 HEREFORD GROUP BREEDPLAN

CED	CEM	GL	BW	200d	400d	600d	Mcw	Milk	SS	CWT	EMA	Rib	Rump	RBV	IMF	SELECTION INDEXES			
+0.6	-2.8	-1.9	+44	+36	+52	+71	+63	+11	+2.5	+52	+4.2	-0.1	-0.1	+1.3	+0.6	SM	Grass	Grain	EU
																+\$79	+\$75	+\$89	+\$91

Notes: Sired by the calving ease carcass sire Opium U78, exhibiting that extra growth from his dams pedigree. He will pack the weight into his progeny and has good IMF.

Purchaser: \$



YAVENVALE JET FIRE J032 (P)

SIRE OF LOTS

2, 6, 20, 22, 23, 24, 32, 37,
 46, 49, 50, 57, 62 & 63.

LOT 22**BOWEN JET FIRE L194 (S)****UNREGISTERED**

Eye Pigment: 100/100

Born: 14/6/2015

Age: 25 mths

Tattoo:L194

KOANUI ROCKET 0219 (IMP NZL) (P)
 PINE HILL CROSSFIRE C558 (AI) (P)
 PINE HILL GHOST MAPLE W16 (AI) (P)

SIRE: YAVENVALE JET FIRE J032 (P)

KURRAJONG PARK B144 (P)
 YAVENVALE EMPRESS G320 (P)
 YAVENVALE EMPRESS C340 (H#)

DEBARRY EDEN Y34
 BOWEN EL NINO E148
 SVY LAVENDER Y005

DAM: BOWEN ROLLINA H79

BOWEN ARGYLE
 BOWEN ROLLINA E264
 BOWEN ROLLINA W379

**SIRE YAVENVALE JET FIRE EBVS - MAY 2017 HEREFORD GROUP BREEDPLAN**

CED	CEM	GL	BW	200d	400d	600d	Mcw	Milk	SS	CWT	EMA	Rib	Rump	RBV	IMF	SELECTION INDEXES			
+6.5	+6.0	-1.8	+2.5	+33	+60	+80	+58	+23	+3.1	+58	+3.5	+0.7	+0.8	+0.8	+0.8	SM	Grass	Grain	EU
58%	43%	84%	87%	83%	82%	79%	71%	56%	77%	68%	58%	63%	68%	61%	67%	+\$113	+\$110	+\$130	+\$124

Notes: An easy doing type of sire with depth & volume, his progeny will handle the tough times. Actual birth weight 34kg.

Purchaser: \$

LOT 23**BOWEN JET FIRE L203 (P)****BWNL203**

Eye Pigment: 100/100 Born: 2/07/2015 Age: 24 mths

PP 98%

Tattoo: L203

KOANUI ROCKET 0219 (IMP NZL) (P)
 PINE HILL CROSSFIRE C558 (AI) (P)
 PINE HILL GHOST MAPLE W16 (AI) (P)

SIRE: YAVENVALE JET FIRE J032 (P)

KURRAJONG PARK B144 (P)
 YAVENVALE EMPRESS G320 (P)
 YAVENVALE EMPRESS C340 (H#)

ALLENDALE NATIONAL W168 (P)
 DUNOON DIAMANTINA D651 (AI) (S)
 DUNOON FIRST DAY Y200 (H)

DAM: BOWEN PRUNELLA H162 (P)

AMOR YANAC 2 (ET) (P)
 PEAKES PRUNELLA C203 (P)
 CAS PRUNELLA X299 (P)

**MAY 2017 HEREFORD GROUP BREEDPLAN**

CED	CEM	GL	BW	200d	400d	600d	Mcw	Milk	SS	CWT	EMA	Rib	Rump	RBV	IMF	SELECTION INDEXES			
+3.8	+3.5	-1.2	+2.6	+26	+44	+62	+49	+19	+2.3	+43	+3.1	+1.1	+1.1	+0.2	+0.9	SM	Grass	Grain	EU
36%	28%	51%	70%	65%	65%	62%	55%	40%	48%	52%	46%	49%	54%	47%	48%	+\$86	+\$84	+\$103	+\$96

Traits Observed: CE,BWT,200WT,400WT,FAT,EMA,IMF

Notes: Eye catching bull, very stylish with balance & presence. Excellent set of data, suitable for heifers.

Good Indexes. EBV's rated within the breed top 10% milk & IMF, top 15% rib fat & C.E Dtr, top 20% B.W. & scrotal, top 25% G.L & rump fat.

Purchaser: \$

LOT 24

BOWEN JET FIRE L142 (P)

BWNL142

Eye Pigment: 100/90

Born: 4/09/2015

Age: 22 mths

Tattoo: L142

KOANUI ROCKET 0219 (IMP NZL) (P)
 PINE HILL CROSSFIRE C558 (AI) (P)
 PINE HILL GHOST MAPLE W16 (AI) (P)
SIRE: YAVENVALE JET FIRE J032 (P)
 KURRAJONG PARK B144 (P)
 YAVENVALE EMPRESS G320 (P)
 YAVENVALE EMPRESS C340 (H#)



ALLENDALE NATIONAL W168 (P)
 BOWEN DIAMANTINA D203 (AI) (P)
 BOWEN MATCHLESS Z152 (AI) (P)
DAM: BOWEN PRINCESS G328 (P)
 TE TAUMATA SUPERSTAR (IMP NZL) (P)
 BOWEN PRINCESS C331 (AI) (P)
 BOWEN PRINCESS U130 (P)

MAY 2017 HEREFORD GROUP BREEDPLAN

CED	CEM	GL	BW	200d	400d	600d	Mcw	Milk	SS	CWT	EMA	Rib	Rump	RBV	IMF	SELECTION INDEXES			
+1.5	+1.0	+0.0	+5.6	+45	+75	+103	+93	+18	+2.9	+69	+2.6	+0.3	+0.3	+0.6	+0.7	SM	Grass	Grain	EU
38%	31%	53%	71%	65%	65%	63%	57%	41%	49%	52%	46%	49%	54%	48%	48%	+\$112	+\$104	+\$121	+\$120

Traits Observed: BWT,200WT,400WT,FAT,EMA,IMF

Notes: Top maternal cow families in this sires pedigree, with extra power coming from the Matchless line. Will produce rapid weight gaining weaners. K180 maternal brother sold at 2016 Bowen bull sale.

EBV's rated within the breed top 1% 200 to 600d & carc.wt, top 5% mat.cow wt. Top 10% scrotal, top 15% milk, top 20% IMF. All indexes top 15% or better.

Purchaser: \$

LOT 25

BOWEN COWBOY L172 (P)

BWNL172

Eye Pigment: 100/100

Born: 4/09/2015

Age: 22 mths

PP 98%

Tattoo: L172

DXB 7C BLOCKBUSTER 3K (IMP CAN) (P)
 BBSF 3K RANCHMAN 18R (IMP CAN) (P)
 BBSF 610F CINDY 86L (P)
SIRE: BOWEN COWBOY C245 (AI) (ET) (P)
 VALMA SOUTHERN STAR (AI) (ET) (P)
 BOWEN ROLLINA N61 (P)
 BOWEN ROLLINA D23 (AI) (P)

BOWEN VINCENT V1 (S)
 DEBARRY SCHOONER (S)
 DIMBY SONIA 32 (P)
DAM: BOWEN URSULA G42 (P)
 BOWEN STU-GRADON W404 (S)
 PEAKES URSULA C287 (P)
 KAYNE URSULA X285 (AI) (P)

MAY 2017 HEREFORD GROUP BREEDPLAN

CED	CEM	GL	BW	200d	400d	600d	Mcw	Milk	SS	CWT	EMA	Rib	Rump	RBV	IMF	SELECTION INDEXES			
-2.0	+3.4	-0.5	+6.4	+36	+60	+81	+67	+12	+1.7	+48	+3.5	+0.8	+1.1	+0.7	+0.2	SM	Grass	Grain	EU
43%	36%	53%	73%	68%	68%	67%	62%	54%	56%	57%	51%	55%	59%	53%	54%	+\$87	+\$82	+\$92	+\$95

Traits Observed: BWT,200WT,400WT,FAT,EMA,IMF

Notes: Pedigree stacked with performance sires.

EBV's rated within the breed top 15% 200 & 400d, top 25% rib & rump fat, good EMA & indexes.

Purchaser: \$

LOT 26**BOWEN FORT WORTH L269 (P)****BWNL269**

Eye Pigment: 100/100 Born: 13/09/2015 Age: 22 mths HYF, DLF, IEF-PP98% Tattoo: L269

HARVIE RAFTSMAN 16R (IMP CAN) (P)
 MAUNGAHINA KINGDOM BAY 070073 (IMP NZL) (P)
 MAUNGAHINA MODESTY T264 (P)

SIRE: BOWEN FORT WORTH F44 (AI) (P)

BOWEN URALBA U160 (P)
 BOWEN TRICEL B100 (P)
 BOWEN TRICEL Y33 (TW) (P)

KENYA KIDMAN (P)
 BOWEN ARGYLE A355 (AI) (S)
 BOWEN VIRTUE S307 (P)

DAM: BOWEN RUTH E293 (P)

JSF 37 271 DEVO 23C (IMP CAN) (P)
 BOWEN RUTH Z324 (AI) (P)
 BOWEN RUTH M17 (AI) (P)

MID PARENT EBVS - MAY 2017 HEREFORD GROUP BREEDPLAN

CED	CEM	GL	BW	200d	400d	600d	Mcw	Milk	SS	CWT	EMA	Rib	Rump	RBY	IMF	SELECTION INDEXES			
																SM	Grass	Grain	EU
-2.3	+1.9	-0.8	+5.1	+33	+50	+73	+76	+12	+1.2	+45	+2.4	-0.2	-0.4	+0.8	+0.2	+\$69	+\$63	+\$68	+\$77

Traits Observed:

Notes: Dam is a front paddock cow, one of the younger bulls in sale a very attractive son of Fort Worth with balance & presence.

June Group Breedplan EBVs will be available on Sale Supplementary Sheet.

Purchaser: \$

LOT 27**BOWEN GWYDIR L22 (P)****BWNL22**

Eye Pigment: 100/100 Born: 10/08/2015 Age: 23 mths

PP 98%

Tattoo: L22

ALLENDALE NATIONAL W168 (P)
 BOWEN DIAMANTINA D203 (AI) (P)
 BOWEN MATCHLESS Z152 (AI) (P)

SIRE: BOWEN GWYDIR G222 (AI) (ET) (P)

KENYA LEGION 6 (AI) (P)
 BOWEN ROLLINA Y186 (AI) (P)
 BOWEN ROLLINA U278 (AI) (P)

MM RSM STOCKMASTER 512 (IMP USA) (P)
 DEBARRY IMAGE (AI) (P)
 DEBARRY MODEL T88 (H)

DAM: BOWEN MAPLE E25 (P)

BOWEN URALBA U160 (P)
 BOWEN MAPLE B93 (P)
 BOWEN MAPLE U226 (P)

**MAY 2017 HEREFORD GROUP BREEDPLAN**

CED	CEM	GL	BW	200d	400d	600d	Mcw	Milk	SS	CWT	EMA	Rib	Rump	RBY	IMF	SELECTION INDEXES																			
																SM	Grass	Grain	EU																
-2.8	-5.5	+1.3	+7.2	+39	+62	+95	+94	+10	+2.3	+56	+2.8	-0.6	-1.2	+1.4	+0.3	37%	31%	48%	72%	66%	66%	65%	58%	43%	48%	54%	49%	53%	57%	51%	51%	+\$86	+\$78	+\$91	+\$98

Traits Observed: CE, BWT, 200WT, 400WT, FAT, EMA, IMF

Notes: This Gwydir G222 son will make an outstanding sire, he has excellent growth, length & roundness to his carcass. Three maternal brothers sold previously at Bowen bull sales.

EBV's rated within the breed top 5% 600d & MCW, top 10% 200 & 400d, top 15 Carc. wt & RBY, top 20% scrotal. Good Indexes.

Purchaser: \$

LOT 28**BOWEN DIAMANTINA L109 (P)**

Eye Pigment: 100/100

Born: 5/08/2015

Age: 23 mths

BWNL109

Tattoo: L109

ALLENDALE KING KONG 2 (S)
 ALLENDALE NATIONAL W168 (P)
 ALLENDALE CORA R22 (P)
SIRE: BOWEN DIAMANTINA D203 (AI) (P)
 DR TRANSCENDENT (IMP USA) (IMP USA) (P)
 BOWEN MATCHLESS Z152 (AI) (P)
 BOWEN MATCHLESS W406 (AI) (ET) (P)

BRAXTON GIANT THUNDER S138 (IMP NZL) (P)
 BOWEN TORNADO Z260 (AI) (ET) (P)
 BOWEN TRICEL P180 (P)
DAM: BOWEN DELICIOUS C74 (P)
 BOWEN TRIATHLON T42 (AI) (S)
 BOWEN DELICIOUS W339 (P)
 BOWEN DELICIOUS L86 (P)

**MAY 2017 HEREFORD GROUP BREEDPLAN**

CED	CEM	GL	BW	200d	400d	600d	Mcw	Milk	SS	CWT	EMA	Rib	Rump	RBV	IMF	SELECTION INDEXES			
-4.2	-6.7	+0.6	+7.7	+46	+77	+108	+110	+8	+2.9	+68	+2.9	+0.1	+0.1	+0.7	+0.7	SM	Grass	Grain	EU
47%	43%	56%	74%	69%	69%	68%	63%	55%	55%	60%	55%	57%	62%	56%	57%	+\$101	+\$92	+\$110	+\$112

Traits Observed: CE,BWT,200WT,400WT,FAT,EMA,IMF

Notes: Sound, agile excellent weight for age. Very attractive Diamantina son.**EBV's rated within the breed top 1% 200,400,600d & mat cow wt., top 5% carc.wt, top 10% scrotal, all Indexes top 20% or better, top 20% IMF.**

Purchaser: \$

LOT 29**BOWEN SPARK L090 (AI) (P)**

Eye Pigment: 0/100

Born: 9/07/2015

Age: 24 mths

PP 98%

BWNL090

Tattoo: L090

ALLENDALE MUSKETEER (AI) (S)
 STUDBROOK D'ARTAGNION V086 (AI) (ET) (S)
 BOWEN TRICEL P180 (P)
SIRE: OTAPAWA SPARK 3060 (ET) (IMP NZL) (AI) (ET) (P)
 MONYMUSK DISCOVERY L34 (IMP NZL) (P)
 OTAPAWA SPOT P30 (P)
 OTAPAWA SPOT L44 (P)

VALMA SOUTHERN STAR (AI) (ET) (P)
 BOWEN VINCENT V1 (S)
 BOWEN PRINCESS P146 (P)
DAM: BOWEN CORAL B258 (AI) (P)
 BOWEN VERITY V346 (AI) (P)
 BOWEN CORAL Y204 (P)
 BOWEN CORAL V98 (P)

MAY 2017 HEREFORD GROUP BREEDPLAN

CED	CEM	GL	BW	200d	400d	600d	Mcw	Milk	SS	CWT	EMA	Rib	Rump	RBV	IMF	SELECTION INDEXES			
+2.6	+3.7	-3.4	+5.5	+42	+68	+97	+102	+17	+2.6	+68	+3.8	+0.9	+1.4	+0.0	+1.2	SM	Grass	Grain	EU
54%	51%	76%	67%	68%	69%	68%	64%	62%	58%	62%	58%	61%	63%	59%	59%	+\$120	+\$114	+\$138	+\$133

Traits Observed: GL,CE,200WT,400WT,FAT,EMA,IMF

Notes: This young sire has always been a stand out for body depth & volume, he will produce great feedlot progeny with extra marbling. Maternal Half Brothers sold in 2014 & 2015 Bowen bull sales.**EBV's rated within the breed top 5% Gest. L, 200 to 600d, mat. cow wt, carcass wt, IMF & all Indexes. Top 15% calving ease dtr, scrotal & rump fat. Top 20% EMA & rib fat. Top 25% milk.**

Purchaser: \$

LOT 30

BOWEN DIAMANTINA L217 (P)

BWNL217

Eye Pigment: 80/70 Born: 5/10/2015 Age: 21 mths

PH 98%

Tattoo: L217

ALLENDALE KING KONG 2 (S)
 ALLENDALE NATIONAL W168 (P)
 ALLENDALE CORA R22 (P)
SIRE: BOWEN DIAMANTINA D203 (AI) (P)
 DR TRANSCENDENT (IMP USA) (IMP USA) (P)
 BOWEN MATCHLESS Z152 (AI) (P)
 BOWEN MATCHLESS W406 (AI) (ET) (P)

BRAXTON GIANT THUNDER S138 (IMP NZL) (P)
 BOWEN TORNADO Z260 (AI) (ET) (P)
 BOWEN TRICEL P180 (P)
DAM: BOWEN HARMONY D232 (AI) (ET) (P)
 MONREID RICHMAN (AI) (H)
 MONREID HARMONY T523 (H)
 MONREID HARMONY Q485 (H)



MAY 2017 HEREFORD GROUP BREEDPLAN

CED	CEM	GL	BW	200d	400d	600d	Mcw	Milk	SS	CWT	EMA	Rib	Rump	RBV	IMF	SELECTION INDEXES			
-3.3	-7.3	+0.8	+7.3	+44	+76	+105	+98	+6	+2.4	+68	+3.7	+0.1	+0.0	+1.1	+0.8	SM	Grass	Grain	EU
45%	42%	54%	63%	65%	65%	64%	59%	54%	56%	58%	53%	55%	58%	53%	55%	+\$102	+\$94	+\$116	+\$114

Traits Observed: 200WT,400WT,FAT,EMA,IMF

Notes: High growth quality sire covering a lot of ground, has great soft skin & hair type. Maternal half brothers G276 & H205 sold at previous Bowen bull sales.

All indexes top 20% or better. EBV's rated within the breed top 1% 200 to 600d, top 5% MCW & IMF, top 25% EMA.

Purchaser: \$

LOT 31

BOWEN DIAMANTINA L116 (P)

BWNL116

Eye Pigment: 100/100 Born: 10/08/2015 Age: 23 mths

PH 98%

Tattoo: L116

ALLENDALE KING KONG 2 (S)
 ALLENDALE NATIONAL W168 (P)
 ALLENDALE CORA R22 (P)
SIRE: BOWEN DIAMANTINA D203 (AI) (P)
 DR TRANSCENDENT (IMP USA) (IMP USA) (P)
 BOWEN MATCHLESS Z152 (AI) (P)
 BOWEN MATCHLESS W406 (AI) (ET) (P)

TYCOLAH WARRIOR (P)
 TYCOLAH ZORRO (P)
 TYCOLAH YUTTONG R85 (H#)
DAM: BOWEN IRISH GIRL C23 (AI) (P)
 BOWEN QANTAS Q176 (P)
 BOWEN IRISH GIRL U182 (AI) (P)
 BOWEN IRISH GIRL M219 (P)

MAY 2017 HEREFORD GROUP BREEDPLAN

CED	CEM	GL	BW	200d	400d	600d	Mcw	Milk	SS	CWT	EMA	Rib	Rump	RBV	IMF	SELECTION INDEXES			
-2.0	-6.9	-0.6	+7.1	+41	+70	+96	+94	+10	+2.3	+63	+3.3	+0.4	+0.6	+0.8	+0.5	SM	Grass	Grain	EU
47%	43%	61%	74%	68%	67%	67%	62%	55%	55%	58%	52%	55%	59%	53%	55%	+\$94	+\$86	+\$101	+\$104

Traits Observed: CE,BWT,200WT,400WT,FAT,EMA,IMF

Notes: Quality weight gain sire by Diamantina, very powerful the hind leg & lower thigh.

EBV's rated within the breed top 5% 200 to 600d, mat.cow wt. & Carc. wt., top 20% scrotal, good IMF & EMA. All indexes top 25%.

Purchaser: \$

LOT 32

BOWEN JET FIRE L92 (P)

UNREGISTERED

Eye Pigment: 100/0

Born: 16/7/2015

Age: 24 mths

Tattoo: L92

KOANUI ROCKET 0219 (IMP NZL) (P)
 PINE HILL CROSSFIRE C558 (AI) (P)
 PINE HILL GHOST MAPLE W16 (AI) (P)

MM RSM STOCKMASTER 512
 DEBARRY IMAGE X178
 DEBARRY MODEL T88

SIRE: YAVENVALE JET FIRE J032 (P)

DAM: PEAKES NOVELTY E155

KURRAJONG PARK B144 (P)
 YAVENVALE EMPRESS G320 (P)
 YAVENVALE EMPRESS C340 (H#)

BOWEN TRIATHLON T42
 CAS NOVELTY X170
 CAS NOVELTY S2

SIRE EBVS - MAY 2017 HEREFORD GROUP BREEDPLAN

CED	CEM	GL	BW	200d	400d	600d	Mcw	Milk	SS	CWT	EMA	Rib	Rump	RBV	IMF	SELECTION INDEXES			
+6.5	+6.0	-1.8	+2.5	+33	+60	+80	+58	+23	+3.1	+58	+3.5	+0.7	+0.8	+0.8	+0.8	SM	Grass	Grain	EU
58%	43%	84%	87%	83%	82%	79%	71%	56%	77%	68%	58%	63%	68%	61%	67%	+\$113	+\$110	+\$130	+\$124

Notes: Quality top carcass sire from a tidy cow. Has always stood out, one of the heaviest at weaning. Maternal brother sold at 2014 Bowen bull sale.

Purchaser: \$

LOT 33

BOWEN CALIBRE L159 (AI) (S)

BWNL159

Eye Pigment: 100/95

Born: 8/08/2015

Age: 23 mths

HYF, DLF, IEF-PP98% Tattoo: L159

ALLENDALE VAGABOND A74 (AI) (P)
 ALLENDALE WATERHOUSE D1 (P)
 ALLENDALE MARLINE X185 (P)

HARVIE LADIES MAN 4L (IMP CAN) (P)
 HARVIE RAFTSMAN 16R (IMP CAN) (P)
 HARVIE MISS FIREFLY 51F (IMP CAN) (P)

SIRE: DAYS CALIBRE G74 (P)

DAM: BOWEN URSULA G161 (AI) (P)

ALLENDALE ROBIN HOOD Z239 (P)
 ALLENDALE DAWN C62 (AI) (P)
 ALLENDALE DAWN A150 (AI) (ET) (P)

ALLENDALE NATIONAL W168 (P)
 PEAKES URSULA D13 (AI) (P)
 PEAKES URSULA Z50 (P)

MAY 2017 HEREFORD GROUP BREEDPLAN

CED	CEM	GL	BW	200d	400d	600d	Mcw	Milk	SS	CWT	EMA	Rib	Rump	RBV	IMF	SELECTION INDEXES			
+0.6	+1.9	-1.8	+5.4	+39	+71	+97	+104	+6	+3.5	+67	+6.4	+0.1	+0.1	+1.7	+1.1	SM	Grass	Grain	EU
46%	40%	74%	73%	69%	69%	68%	63%	53%	57%	59%	53%	56%	60%	54%	56%	+\$115	+\$110	+\$133	+\$131

Traits Observed: GL, BWT, 200WT, 400WT, FAT, EMA, IMF

Notes: Stands over a lot of ground this high growth Calibre son, he is athletic with terrific balance. Maternal half brother K115 sold at Bowen bull sale.

EBV's rated within the breed top 1% M.C. wt & EMA, top 5% 400,600d, scrotal, carc.wt & all indexes. Top 10% 200d, RBV & IMF, top 15% gest.L.

Purchaser: \$

LOT 34

BOWEN EXTREMIST L180 (AI) (P)

BWNL180

Eye Pigment: 100/100

Born: 11/06/2015

Age: 25 mths

HYF, DLF, IEF-PP98% Tattoo: L180

KOANUI ROCKET Q334 (P)
 KOANUI ROCKET 0219 (IMP NZL) (P)
 KOANUI ANGEL R187 (P)

BOWEN ARGYLE A355 (AI) (S)
 BOWEN CROWN PRINCE C330 (AI) (P)
 BOWEN PRINCESS T65 (P)

SIRE: BOWEN EXTREMIST E96 (AI) (P)

DAM: BOWEN MARLINE H181 (P)

BOWEN URALBA U160 (P)
 BOWEN ROLLINA B385 (P)
 BOWEN ROLLINA Y73 (P)

BOWEN VINCENT V1 (S)
 BOWEN MARLINE B28 (AI) (P)
 BOWEN MARLINE X112 (AI) (ET) (P)

MAY 2017 HEREFORD GROUP BREEDPLAN

CED	CEM	GL	BW	200d	400d	600d	Mcw	Milk	SS	CWT	EMA	Rib	Rump	RBV	IMF	SELECTION INDEXES			
+3.7	+5.4	-3.9	+1.8	+27	+44	+65	+62	+16	+2.0	+48	+3.4	+0.7	+1.2	+1.0	+0.3	SM	Grass	Grain	EU
43%	37%	73%	72%	67%	67%	66%	59%	49%	54%	56%	50%	53%	57%	51%	52%	+\$87	+\$84	+\$88	+\$95

Traits Observed: GL, CE, BWT, 200WT, 400WT, FAT, EMA, IMF

Notes: From a superb cow family & has excellent calving ease data. Actual Birth weight of 33kg.

EBV's rated within the breed top 5% G.L & Calving ease dtr, top 10% B.W. Good indexes, EMA & IMF

Purchaser: \$

LOT 35**BOWEN COWBOY L102 (P)****BWNL102**

Eye Pigment: 100/100 Born: 4/08/2015 Age: 23 mths

PP 98%

Tattoo: L102

DXB 7C BLOCKBUSTER 3K (IMP CAN) (P)

BBSF 3K RANCHMAN 18R (IMP CAN) (P)

BBSF 610F CINDY 86L (P)

SIRE: BOWEN COWBOY C245 (AI) (ET) (P)

VALMA SOUTHERN STAR (AI) (ET) (P)

BOWEN ROLLINA N61 (P)

BOWEN ROLLINA D23 (AI) (P)

BRAXTON GIANT THUNDER S138 (IMP NZL) (P)

BOWEN TORNADO Z260 (AI) (ET) (P)

BOWEN TRICEL P180 (P)

DAM: BOWEN ROLLINA C86 (AI) (P)

BOWEN TRIATHLON T42 (AI) (S)

BOWEN ROLLINA W237 (P)

BOWEN ROLLINA P82 (AI) (P)

MAY 2017 HEREFORD GROUP BREEDPLAN

CED	CEM	GL	BW	200d	400d	600d	Mcw	Milk	SS	CWT	EMA	Rib	Rump	RBV	IMF	SELECTION INDEXES			
-1.0	+3.2	-2.3	+5.0	+33	+45	+63	+44	+9	+1.8	+38	+3.4	+0.8	+0.7	+0.7	+0.7	SM	Grass	Grain	EU
47%	39%	61%	74%	70%	70%	69%	63%	59%	57%	59%	53%	56%	61%	55%	56%	+\$84	+\$82	+\$102	+\$98

Traits Observed: CE,BWT,200WT,400WT,FAT,EMA,IMF

Notes: Cowboy son possessing a mirror carcass to his sire, check out his hind quarter. Dam Rollina C86 has been a consistent breeder. Maternal half brother J205 sold at 2015 Bowen bull sale.

EBV's rated within the breed top 10% Gestation L, top 20% C.E. dtr & IMF. Good EMA, rib, rump & Indexes.

Purchaser: \$

LOT 36**BOWEN COWBOY L16 (S)****BWNL16**

Eye Pigment: 100/100 Born: 5/08/2015 Age: 23 mths

PH 98%

Tattoo: L16

DXB 7C BLOCKBUSTER 3K (IMP CAN) (P)

BBSF 3K RANCHMAN 18R (IMP CAN) (P)

BBSF 610F CINDY 86L (P)

SIRE: BOWEN COWBOY C245 (AI) (ET) (P)

VALMA SOUTHERN STAR (AI) (ET) (P)

BOWEN ROLLINA N61 (P)

BOWEN ROLLINA D23 (AI) (P)

BRIDGE POWERPLAY (AI) (ET) (S)

DEBARRY HIGHLANDER 2 (AI) (S)

DEBARRY LAST DAY T103 (P)

DAM: BOWEN RUTH A245 (AI) (P)

VALMA SOUTHERN STAR (AI) (ET) (P)

BOWEN RUTH V169 (P)

BOWEN RUTH Q5 (P)

**MAY 2017 HEREFORD GROUP BREEDPLAN**

CED	CEM	GL	BW	200d	400d	600d	Mcw	Milk	SS	CWT	EMA	Rib	Rump	RBV	IMF	SELECTION INDEXES			
-5.5	+2.7	-0.9	+6.5	+34	+50	+71	+68	+9	+2.0	+39	+2.8	+0.2	+0.0	+1.0	+0.0	SM	Grass	Grain	EU
46%	39%	61%	74%	69%	69%	68%	61%	58%	56%	58%	52%	55%	60%	54%	55%	+\$65	+\$60	+\$66	+\$75

Traits Observed: CE,BWT,200WT,400WT,FAT,EMA,IMF

Notes: This Cowboy son combines terrific carcass with mobility, check out his hind quarter hard to find better on a British Bred bull. Maternal brother sold in previous Bowen Bull sale.

EBV's rated within the breed top 25% Calving ease dtr. & 200d, good RBV.

Purchaser: \$

LOT 37**BOWEN JET FIRE L61 (AI) (S)**

Eye Pigment: 100/100 Born: 12/08/2015 Age: 23 mths

PH 98%

BWNL61

Tattoo: L61

KOANUI ROCKET 0219 (IMP NZL) (P)
 PINE HILL CROSSFIRE C558 (AI) (P)
 PINE HILL GHOST MAPLE W16 (AI) (P)
SIRE: YAVENVALE JET FIRE J032 (P)
 KURRAJONG PARK B144 (P)
 YAVENVALE EMPRESS G320 (P)
 YAVENVALE EMPRESS C340 (H#)

ALLENDALE NATIONAL W168 (P)
 BOWEN DIAMANTINA D203 (AI) (P)
 BOWEN MATCHLESS Z152 (AI) (P)
DAM: BOWEN IRISH GIRL J207 (P)
 TYCOLAH ZORRO (P)
 BOWEN IRISH GIRL C23 (AI) (P)
 BOWEN IRISH GIRL U182 (AI) (P)

**MAY 2017 HEREFORD GROUP BREEDPLAN**

CED	CEM	GL	BW	200d	400d	600d	Mcw	Milk	SS	CWT	EMA	Rib	Rump	RBY	IMF	SELECTION INDEXES			
																SM	Grass	Grain	EU
+3.0	+0.4	-0.4	+5.0	+40	+74	+99	+85	+18	+2.8	+69	+3.8	+0.6	+0.7	+1.0	+0.7				
38%	30%	72%	70%	65%	65%	63%	56%	40%	48%	53%	47%	51%	56%	49%	50%	+\$118	+\$112	+\$131	+\$129

Traits Observed: GL,CE,BWT,200WT,400WT,FAT,EMA,IMF

Notes: Impressive Jet Fire son with style, balance and great carcass.

EBV's rated within the breed top 1% 400d, carc. wt, top 5% 200d, 600d, top 10% MCW, scrotal & all indexes, top 15% milk, top 20% EMA, good RBY rib & rump fats.

Purchaser: \$

**FOR ALL YOUR ARTIFICIAL BREEDING NEEDS**

Artificial Insemination Ultrasound Preg Testing Semen Collection Semen & Embryo Storage Ear Tags Supplements

www.northernab.com.aubrendan@northernab.com.au

02 6545 2465

0427 417 148

LOT 38**BOWEN COWBOY L29 (S)****BWNL29**

Eye Pigment: 100/100 Born: 23/07/2015 Age: 23 mths

PP 98%

Tattoo: L29

DXB 7C BLOCKBUSTER 3K (IMP CAN) (P)
 BBSF 3K RANCHMAN 18R (IMP CAN) (P)
 BBSF 610F CINDY 86L (P)
SIRE: BOWEN COWBOY C245 (AI) (ET) (P)
 VALMA SOUTHERN STAR (AI) (ET) (P)
 BOWEN ROLLINA N61 (P)
 BOWEN ROLLINA D23 (AI) (P)

BOWEN MINISTER Y168 (S)
 STUDBROOK PRINCE B034 (S)
 BOWEN PRINCESS T65 (P)
DAM: BOWEN CORAL D293 (P)
 STUDBROOK NESS N67 (AI) (ET) (P)
 BOWEN CORAL U310 (P)
 BOWEN CORAL Q206 (P)

MAY 2017 HEREFORD GROUP BREEDPLAN

CED	CEM	GL	BW	200d	400d	600d	Mcw	Milk	SS	CWT	EMA	Rib	Rump	RBV	IMF	SELECTION INDEXES			
-2.8	+0.5	-1.6	+7.3	+34	+53	+77	+68	+11	+2.3	+43	+4.0	+0.8	+0.9	+1.0	+0.2	SM	Grass	Grain	EU
44%	36%	53%	74%	69%	69%	68%	63%	58%	58%	58%	51%	54%	59%	53%	54%	+\$84	+\$79	+\$91	+\$96

Traits Observed: CE,BWT,200WT,400WT,FAT,EMA,IMF

Notes: Maternal half brothers H49 & J190 sold at the 2014 & 2015 Bowen bull sales.**EBV's rated within the breed, top 15% G.L, top 20%scrotal & EMA, top 25% 200d. Good rib, rump fats & indexes.**

Purchaser: \$

LOT 39**BOWEN SPARK L35 (AI) (P)****BWNL35**

Eye Pigment: 95/100 Born: 6/08/2015 Age: 23 mths

PH 98%

Tattoo: L35

ALLENDALE MUSKETEER (AI) (S)
 STUDBROOK D'ARTAGNION V086 (AI) (ET) (S)
 BOWEN TRICEL P180 (P)
SIRE: OTAPAWA SPARK 3060 (ET) (IMP NZL) (AI) (ET) (P)
 MONYMUSK DISCOVERY L34 (IMP NZL) (P)
 OTAPAWA SPOT P30 (P)
 OTAPAWA SPOT L44 (P)

MOUNTAIN VALLEY ROCKYNED B1 (P)
 CASCADE EL DORADO E27 (P)
 CASCADE IRISH MAID A37 (AI) (P)
DAM: BOWEN LEONORA H39 (AI) (S)
 MONYMUSK DISCOVERY L34 (IMP NZL) (P)
 BOWEN LEONORA B168 (AI) (ET) (P)
 OTAPAWA LEONORA P23 (IMP NZL) (P)

MAY 2017 HEREFORD GROUP BREEDPLAN

CED	CEM	GL	BW	200d	400d	600d	Mcw	Milk	SS	CWT	EMA	Rib	Rump	RBV	IMF	SELECTION INDEXES			
+1.8	+3.0	-0.6	+5.0	+40	+75	+110	+122	+17	+2.3	+74	+3.8	+0.5	+0.9	+0.3	+1.6	SM	Grass	Grain	EU
54%	50%	76%	74%	70%	70%	69%	66%	59%	58%	62%	58%	60%	62%	58%	58%	+\$131	+\$124	+\$153	+\$144

Traits Observed: GL,CE,BWT,200WT,400WT,FAT,EMA,IMF

Notes: Long bodied, slick skinned & balanced son of Otapawa Spark - will breed top feedlot progeny.**EBV's rated within the breed top 1% 400,600d, MCW, Carc.wt & all indexes. Top 5% 200d & IMF, top 20% scrotal & EMA. Good rib & rump fats.**

Purchaser: \$

LOT 40**BOWEN GWYDIR L21 (P)****BWNL21**

Eye Pigment: 100/100 Born: 30/07/2015 Age: 23 mths

PP 98%

Tattoo: L21

ALLENDALE NATIONAL W168 (P)
 BOWEN DIAMANTINA D203 (AI) (P)
 BOWEN MATCHLESS Z152 (AI) (P)
SIRE: BOWEN GWYDIR G222 (AI) (ET) (P)
 KENYA LEGION 6 (AI) (P)
 BOWEN ROLLINA Y186 (AI) (P)
 BOWEN ROLLINA U278 (AI) (P)

BOWEN MINISTER Y168 (S)
 STUDBROOK PRINCE B034 (S)
 BOWEN PRINCESS T65 (P)
DAM: BOWEN NANCY D285 (P)
 BOWEN DECANter D22 (AI) (P)
 BOWEN NANCY V305 (AI) (P)
 BOWEN NANCY K234 (AI) (P)

MAY 2017 HEREFORD GROUP BREEDPLAN

CED	CEM	GL	BW	200d	400d	600d	Mcw	Milk	SS	CWT	EMA	Rib	Rump	RBV	IMF	SELECTION INDEXES			
-2.3	-4.2	+0.8	+6.1	+32	+50	+77	+80	+10	+2.3	+46	+2.5	+0.0	-0.1	+0.7	+0.2	SM	Grass	Grain	EU
37%	29%	46%	72%	66%	66%	65%	58%	44%	47%	54%	47%	52%	57%	50%	50%	+\$69	+\$63	+\$70	+\$78

Traits Observed: CE,BWT,200WT,400WT,FAT,EMA,IMF

Notes: Sire Gwydir G222 stamps consistently into his progeny. This bulls pedigree combines some of our very best matrons. Three maternal brothers G126, H66, J189 sold at previous Bowen bull sales.**EBV's rated within the breed top 20% scrotal.**

Purchaser: \$

LOT 41

BOWEN ELVIS L9 (AI) (S)

BWNL9

Eye Pigment: 100/100 Born: 7/08/2015 Age: 23 mths PH 98% Tattoo: L9

SOUTH BUKALONG WALKER 6 (AI) (P)
SOUTH BUKALONG WALLACE 2 (P)
SOUTH BUKALONG VICTORIA 152 (P)

ALLENDALE NATIONAL W168 (P)
BOWEN DIAMANTINA D203 (AI) (P)
BOWEN MATCHLESS Z152 (AI) (P)

SIRE: YAVENVALE ELVIS E199 (P)

DAM: BOWEN URSULA H220 (P)

KIDMAN TRIUMPH V179 (AI) (P)
ON SLOW CORISANDE Z125 (P)
ON SLOW CORISANDE W23 (H)

BRAXTON GIANT 1 (IMP NZ) (IMP NZL) (P)
PEAKES URSULA Z286 (AI) (P)
KAYNE URSULA W7 (P)

MAY 2017 HEREFORD GROUP BREEDPLAN

CED	CEM	GL	BW	200d	400d	600d	Mcw	Milk	SS	CWT	EMA	Rib	Rump	RBV	IMF	SELECTION INDEXES			
-0.3	-0.5	+0.7	+4.9	+40	+67	+94	+75	+14	+2.8	+59	+3.8	+1.0	+1.8	+0.4	+1.1	SM	Grass	Grain	EU
40%	35%	73%	72%	67%	67%	66%	60%	43%	52%	58%	53%	55%	60%	52%	55%	+\$113	+\$109	+\$133	+\$124

Traits Observed: GL, CE, BWT, 200WT, 400WT, FAT, EMA, IMF

Notes: Very good bull, ticks a lot of box's for soundness, carcass, mobility & type.

EBV's rated within the breed top 5% 200d to 600d, top 10% scrotal, rump fat & all indexes, top 15% rib fat, top 20% EMA, top 25% MCW.

Purchaser: \$

LOT 42

BOWEN HOLY SMOKE L182 (AI) (S)

BWNL182

Eye Pigment: 100/100 Born: 16/06/2015 Age: 25 mths PH 98% Tattoo: L182

YARRAM HOT SHOT P028 (AI) (H)
CAPETHORNE HOT SHOT 03 22 (P)
CAPETHORNE AMETHYST U21 (P)

HARVIE LADIES MAN 4L (IMP CAN) (P)
HARVIE RAFTSMAN 16R (IMP CAN) (P)
HARVIE MISS FIREFLY 51F (IMP CAN) (P)

SIRE: MATARIKI HOLY - SMOKE (IMP NZL) (P)

DAM: BOWEN ADVANCE H25 (AI) (P)

KOANUI BULL'S-EYE R60 (P)
MATARIKI GIRLIE 00323 (P)
MATARIKI GIRLIE 3 (P)

TYCOLAH ZORRO (P)
BOWEN ADVANCE Z238 (P)
BOWEN ADVANCE Q122 (P)

MAY 2017 HEREFORD GROUP BREEDPLAN

CED	CEM	GL	BW	200d	400d	600d	Mcw	Milk	SS	CWT	EMA	Rib	Rump	RBV	IMF	SELECTION INDEXES			
-3.5	+1.0	-1.7	+5.2	+43	+73	+96	+82	+13	+1.8	+69	+4.7	+0.6	+0.7	+1.2	+0.8	SM	Grass	Grain	EU
52%	47%	74%	73%	69%	69%	67%	62%	57%	56%	59%	54%	56%	60%	55%	56%	+\$108	+\$102	+\$123	+\$120

Traits Observed: GL, CE, BWT, 200WT, 400WT, FAT, EMA, IMF

Notes: Excellent body depth & weight for age, very docile. Our only Holy-Smoke this year, outcross pedigree New Zealand, Canadian & Australian genetics.

EBV's rated within the breed top 1% carc.wt,200 & 400d. Top 5% 600d, top 10% EMA, IMF & all Indexes. Top 15% G.L, mat. cow wt & IMF.

Purchaser: \$

LOT 43

BOWEN EXTREMIST L190 (AI) (P)

BWNL190

Eye Pigment: 100/95 Born: 17/06/2015 Age: 25 mths PP 98% Tattoo: L190

KOANUI ROCKET Q334 (P)
KOANUI ROCKET 0219 (IMP NZL) (P)
KOANUI ANGEL R187 (P)

KIDMAN BRADMAN W101 (AI) (P)
KIDMAN THE DON Y220 (P)
KIDMAN HILDA V21 (P)

SIRE: BOWEN EXTREMIST E96 (AI) (P)

DAM: BOWEN PRINCESS H34 (AI) (P)

BOWEN URALBA U160 (P)
BOWEN ROLLINA B385 (P)
BOWEN ROLLINA Y73 (P)

BOWEN VINCENT V1 (S)
BOWEN PRINCESS Z271 (AI) (ET) (P)
BOWEN PRINCESS T65 (P)

MAY 2017 HEREFORD GROUP BREEDPLAN

CED	CEM	GL	BW	200d	400d	600d	Mcw	Milk	SS	CWT	EMA	Rib	Rump	RBV	IMF	SELECTION INDEXES			
+2.8	+5.2	-2.2	+3.2	+34	+58	+88	+80	+19	+2.5	+61	+3.8	+0.9	+1.4	+1.4	+0.1	SM	Grass	Grain	EU
45%	38%	75%	72%	67%	67%	66%	60%	50%	55%	57%	51%	54%	57%	52%	53%	+\$108	+\$102	+\$107	+\$115

Traits Observed: GL, CE, BWT, 200WT, 400WT, FAT, EMA, IMF

Notes: Superb carcass merits will breed top feedlot steers, balanced data with excellent calving ease.

Indexes all in top 20% or better. EBV's rated within the breed top 10% 600d, carc.wt, milk. Top 15% Mat. cow wt, scrotal, rump fat & RBV. Top 20% 400d, EMA & rib fat. Top 25% B.W & 600d.

Purchaser: \$

LOT 44**BOWEN EVEREADY L82 (AI) (P)****BWNL82**

Eye Pigment: 100/100 Born: 16/07/2015 Age: 24 mths

PH 98%

Tattoo: L82

SKY 236G PREMIER 132K (P)
 OTAPAWA SKYMATE 2046 (IMP NZL) (ET) (P)
 OTAPAWA LEONORA P23 (IMP NZL) (P)
SIRE: BRAYBOOK EVEREADY E385 (AI) (ET) (P)
 VALMA SOUTHERN STAR (AI) (ET) (P)
 BOWEN PRINCESS U130 (P)
 BOWEN PRINCESS P146 (P)

BOWEN VINCENT V1 (S)
 DEBARRY EDEN (P)
 DEBARRY PURITY V50 (AI) (ET) (P)
DAM: BOWEN MAPLE E90 (AI) (P)
 JSF 37 271 DEVO 23C (IMP CAN) (P)
 BOWEN MAPLE B182 (AI) (ET) (P)
 BOWEN MAPLE P111 (P)

MID PARENT EBVS - MAY 2017 HEREFORD GROUP BREEDPLAN

CED	CEM	GL	BW	200d	400d	600d	Mcw	Milk	SS	CWT	EMA	Rib	Rump	RBY	IMF	SELECTION INDEXES			
																SM	Grass	Grain	EU
+4.9	+7.3	-1.4	+2.1	+29	+48	+67	+61	+19	+2.4	+44	+1.0	0.0	0.0	+0.4	-0.1	+\$82	+\$78	+\$80	+\$89

Notes: Eveready L82 has extra body length. His pedigree combines the great maternal lines of Maple, Purity and Princess cow families.

June Group Breedplan EBVs will be available on Sale Supplementary Sheet.

Purchaser: \$

LOT 45**BOWEN EVEREADY L88 (P)****BWNL88**

Eye Pigment: 60/90 Born: 3/08/2015 Age: 23 mths

PH 98%

Tattoo: L88

SKY 236G PREMIER 132K (P)
 OTAPAWA SKYMATE 2046 (IMP NZL) (ET) (P)
 OTAPAWA LEONORA P23 (IMP NZL) (P)
SIRE: BRAYBOOK EVEREADY E385 (AI) (ET) (P)
 VALMA SOUTHERN STAR (AI) (ET) (P)
 BOWEN PRINCESS U130 (P)
 BOWEN PRINCESS P146 (P)

BOWEN ROXBOROUGH R266 (AI) (ET) (P)
 BOWEN URALBA U160 (P)
 ALLENDALE MARLINE L72 (P)
DAM: BOWEN PRINCESS D166 (P)
 MERRANLEE SUNDANCE S55 (AI) (P)
 BOWEN PRINCESS W154 (P)
 BOWEN PRINCESS S195 (P)

MAY 2017 HEREFORD GROUP BREEDPLAN

CED	CEM	GL	BW	200d	400d	600d	Mcw	Milk	SS	CWT	EMA	Rib	Rump	RBY	IMF	SELECTION INDEXES			
																SM	Grass	Grain	EU
-5.1	+3.4	-0.5	+6.1	+33	+51	+82	+86	+18	+1.9	+50	+3.4	+0.4	+0.3	+1.0	+0.7	+\$88	+\$82	+\$100	+\$101
40%	35%	46%	72%	67%	67%	67%	60%	49%	53%	56%	50%	54%	59%	52%	53%				

Traits Observed: CE,BWT,200WT,400WT,FAT,EMA,IMF

Notes: Dam Princess D166 is a magnificent cow. Eveready L88 is very similar to his sire with his extra length, round barrel and excellent marbling.

Good indexes, EMA, IMF, rib & rump fats. EBV's rated within the breed top 10% MCW, top 15% milk, top 20% C.E.Dtrs & 600d.

Purchaser: \$

LOT 46**BOWEN JET FIRE L178 (P)****BWNL178**

Eye Pigment: 100/100 Born: 3/07/2015 Age: 25 mths

HYF, DLF, IEF-PP98% Tattoo: L178

KOANUI ROCKET 0219 (IMP NZL) (P)
 PINE HILL CROSSFIRE C558 (AI) (P)
 PINE HILL GHOST MAPLE W16 (AI) (P)
SIRE: YAVENVALE JET FIRE J032 (P)
 KURRAJONG PARK B144 (P)
 YAVENVALE EMPRESS G320 (P)
 YAVENVALE EMPRESS C340 (H#)

ALLENDALE NATIONAL W168 (P)
 DUNOON DIAMANTINA D651 (AI) (S)
 DUNOON FIRST DAY Y200 (H)
DAM: BOWEN PRINCESS H147 (P)
 BOWEN URALBA U160 (P)
 BOWEN PRINCESS D166 (P)
 BOWEN PRINCESS W154 (P)

MAY 2017 HEREFORD GROUP BREEDPLAN

CED	CEM	GL	BW	200d	400d	600d	Mcw	Milk	SS	CWT	EMA	Rib	Rump	RBY	IMF	SELECTION INDEXES			
																SM	Grass	Grain	EU
+3.3	+4.3	-1.3	+3.8	+34	+58	+82	+74	+20	+2.6	+55	+3.3	+0.0	-0.3	+1.3	+0.4	+\$98	+\$93	+\$105	+\$109
36%	28%	51%	69%	64%	64%	62%	54%	40%	47%	52%	46%	50%	54%	48%	48%				

Traits Observed: CE,BWT,200WT,400WT,FAT,EMA,IMF

Notes: Jet Fire L178 has superior body length, pigment & excellent eye setting. He has short gestation and low birth weight with excellent calving data.

EBV's rated within the breed top 10% milk & calving ease dtr., top 15% scrotal, top 20% G.L. 400,600d, RBY, good IMF & EMA. All Indexes top 25% or better.

Purchaser: \$

LOT 47

BOWEN CALIBRE L117 (P)

BWNL117

Eye Pigment: 100/100 Born: 1/09/2015 Age: 22 mths

PP 98%

Tattoo: L117

ALLENDALE VAGABOND A74 (AI) (P)
 ALLENDALE WATERHOUSE D1 (P)
 ALLENDALE MARLINE X185 (P)
SIRE: DAYS CALIBRE G74 (P)
 ALLENDALE ROBIN HOOD Z239 (P)
 ALLENDALE DAWN C62 (AI) (P)
 ALLENDALE DAWN A150 (AI) (ET) (P)



TYCOLAH WARRIOR (P)
 TYCOLAH ZORRO (P)
 TYCOLAH YUTTONG R85 (H#)
DAM: BOWEN MAPLE D249 (AI) (ET) (P)
 VALMA SOUTHERN STAR (AI) (ET) (P)
 BOWEN MAPLE P111 (P)
 BOWEN MAPLE H140 (P)

MAY 2017 HEREFORD GROUP BREEDPLAN

CED	CEM	GL	BW	200d	400d	600d	Mcw	Milk	SS	CWT	EMA	Rib	Rump	RBV	IMF	SELECTION INDEXES			
-1.5	+2.4	+0.0	+7.5	+38	+69	+97	+106	+4	+2.8	+58	+5.5	+0.5	+0.9	+0.9	+1.4	SM	Grass	Grain	EU
48%	41%	58%	73%	69%	69%	68%	63%	55%	58%	59%	53%	56%	60%	54%	56%	+\$111	+\$105	+\$134	+\$127

Traits Observed: BWT,200WT,400WT,FAT,EMA,IMF

Notes: Upstanding son of Calibre from an outstanding cow family. Maternal half brother J099 sold in 2015 Bowen bull sale.

EBV's rated within the breed top 1% mat. cow wt, top 5% 400,600d, EMA, IMF, frain fed & EU Indexes. Top 10% 200d, scrotal, carc. wt., supermarket & grass fed Indexes.

Purchaser: \$

LOT 48

BOWEN ELVIS L201 (S)

BWNL201

Eye Pigment: 100/100

Born: 6/07/2015

Age: 24 mths

Tattoo: L201

SOUTH BUKALONG WALKER 6 (AI) (P)
 SOUTH BUKALONG WALLACE 2 (P)
 SOUTH BUKALONG VICTORIA 152 (P)
SIRE: YAVENVALE ELVIS E199 (P)
 KIDMAN TRIUMPH V179 (AI) (P)
 ONSLOW CORISANDE Z125 (P)
 ONSLOW CORISANDE W23 (H)

MAUNGAHINA KINGDOM BAY 070073 (IMP NZL) (P)
 BOWEN FORT WORTH F44 (AI) (P)
 BOWEN TRICEL B100 (P)
DAM: BOWEN FLORRIE H150 (P)
 DEBARRY EDEN (P)
 BOWEN FLORRIE E195 (AI) (P)
 BOWEN FLORRIE A161 (P)

MID PARENT EBVS - MAY 2017 HEREFORD GROUP BREEDPLAN

CED	CEM	GL	BW	200d	400d	600d	Mcw	Milk	SS	CWT	EMA	Rib	Rump	RBV	IMF	SELECTION INDEXES			
+1.4	+5.3	-0.4	+3.9	+33	+53	+74	+71	+17	+3.0	+45	+1.8	-0.2	-0.6	+1.9	0.0	SM	Grass	Grain	EU
																+\$80	+\$74	+\$79	+\$89

Notes: Sired by low birth weight sire Elvis E199, he is a long bodied volume sire that will pack the weight into his progeny.

June Group Breedplan EBVs will be available on Sale Supplementary Sheet.

Purchaser: \$

LOT 49**BOWEN JET FIRE L83 (AI) (P)****BWNL83**

Eye Pigment: 100/100 Born: 9/07/2015 Age: 24 mths

PP 98%

Tattoo: L83

KOANUI ROCKET 0219 (IMP NZL) (P)
 PINE HILL CROSSFIRE C558 (AI) (P)
 PINE HILL GHOST MAPLE W16 (AI) (P)

BRIDGE POWERPLAY (AI) (ET) (S)
 DEBARRY HIGHLANDER 2 (AI) (S)
 DEBARRY LAST DAY T103 (P)

SIRE: YAVENVALE JET FIRE J032 (P)**DAM: PEAKES PRUNELLA B9 (P)**

KURRAJONG PARK B144 (P)
 YAVENVALE EMPRESS G320 (P)
 YAVENVALE EMPRESS C340 (H#)

VALMA SOUTHERN STAR (AI) (ET) (P)
 CAS PRUNELLA U114 (P)
 CAS PRUNELLA N140 (P)

MAY 2017 HEREFORD GROUP BREEDPLAN

CED	CEM	GL	BW	200d	400d	600d	Mcw	Milk	SS	CWT	EMA	Rib	Rump	RBV	IMF	SELECTION INDEXES			
+1.6	+4.1	-0.8	+3.0	+29	+49	+67	+55	+19	+2.5	+45	+2.3	+1.0	+1.2	+0.1	+0.6	SM	Grass	Grain	EU
40%	32%	72%	72%	66%	66%	64%	57%	45%	49%	54%	47%	52%	56%	50%	50%	+\$86	+\$83	+\$97	+\$95

Traits Observed: GL,CE,BWT,200WT,400WT,FAT,EMA,IMF

Notes: Maternal half brother F37 sold at 2012 Bowen bull sale. Suitable for heifers.**Good indexes, EBV's rated within the breed top 10% milk, top 15% scrotal & rib fat, top 20% rump fat, top 25% IMF.**

Purchaser: \$

LOT 50**BOWEN JET FIRE L53 (AI) (P)****BWNL53**

Eye Pigment: 100/100

Born: 7/08/2015

Age: 23 mths

Tattoo: L53

KOANUI ROCKET 0219 (IMP NZL) (P)
 PINE HILL CROSSFIRE C558 (AI) (P)
 PINE HILL GHOST MAPLE W16 (AI) (P)

MOUNTAIN VALLEY ROCKYNED B1 (P)
 CASCADE EL DORADO E27 (P)
 CASCADE IRISH MAID A37 (AI) (P)

SIRE: YAVENVALE JET FIRE J032 (P)**DAM: BOWEN MATCHLESS J210 (AI) (P)**

KURRAJONG PARK B144 (P)
 YAVENVALE EMPRESS G320 (P)
 YAVENVALE EMPRESS C340 (H#)

KENYA KIDMAN (P)
 BOWEN MATCHLESS B387 (AI) (P)
 BOWEN MATCHLESS Y188 (P)

MAY 2017 HEREFORD GROUP BREEDPLAN

CED	CEM	GL	BW	200d	400d	600d	Mcw	Milk	SS	CWT	EMA	Rib	Rump	RBV	IMF	SELECTION INDEXES			
+3.7	+3.3	-1.0	+3.0	+31	+56	+77	+60	+17	+2.5	+49	+2.8	+0.5	+0.9	+0.6	+0.9	SM	Grass	Grain	EU
38%	29%	72%	70%	65%	65%	64%	57%	41%	49%	53%	48%	52%	56%	49%	50%	+\$102	+\$99	+\$120	+\$113

Traits Observed: GL,CE,BWT,200WT,400WT,FAT,EMA,IMF

Notes: Quality sire, ideal for heifer joining.**EBV's rated within the breed top 10% IMF, top 15% scrotal & all indexes, top 25% Milk, 400d, B.W & G.L. Good rib, rump fats.**

Purchaser: \$

LOT 51**BOWEN SPARK L72 (AI) (S)****BWNL72**

Eye Pigment: 100/100 Born: 9/07/2015 Age: 24 mths

PH 98%

Tattoo: L72

ALLENDALE MUSKETEER (AI) (S)
 STUDBROOK D'ARTAGNION V086 (AI) (ET) (S)
 BOWEN TRICEL P180 (P)

MERRANLEE SUNDANCE S55 (AI) (P)
 BOWEN WESTERN STAR W35 (AI) (P)
 BOWEN MAPLE P111 (P)

SIRE: OTAPAWA SPARK 3060 (ET) (IMP NZL) (AI) (ET) (P)**DAM: PEAKES MINERVA B291 (AI) (P)**

MONYMUSK DISCOVERY L34 (IMP NZL) (P)
 OTAPAWA SPOT P30 (P)
 OTAPAWA SPOT L44 (P)

BOWEN VALOUR V39 (AI) (P)
 PEAKES MINERVA Y12 (AI) (P)
 KENYA MINERVA 98 (P)

MAY 2017 HEREFORD GROUP BREEDPLAN

CED	CEM	GL	BW	200d	400d	600d	Mcw	Milk	SS	CWT	EMA	Rib	Rump	RBV	IMF	SELECTION INDEXES			
+2.7	+3.2	-3.1	+3.7	+33	+57	+77	+90	+10	+1.8	+54	+2.7	+1.9	+2.9	-1.1	+1.4	SM	Grass	Grain	EU
53%	50%	76%	74%	70%	70%	69%	64%	60%	57%	62%	57%	60%	63%	58%	58%	+\$102	+\$99	+\$120	+\$113

Traits Observed: GL,CE,BWT,200WT,400WT,FAT,EMA,IMF

Notes: Another quality Otapawa Spark son that ticks a lot of boxes for soundness & type. Two maternal brothers sold at previous Bowen bull sales.**Low birth, EBV's rated within the breed top 1% rump fat, top 5% G.L, MCW, IMF & rib fat, top 15% all indexes, top 20% 40d, C.E.Dtr. & carc. wt.**

Purchaser: \$

LOT 52

BOWEN COYBOY L14 (P)

BWNL14

Eye Pigment: 100/100 Born: 26/07/2015 Age: 23 mths PP 98% Tattoo: L14

DXB 7C BLOCKBUSTER 3K (IMP CAN) (P)
 BBSF 3K RANCHMAN 18R (IMP CAN) (P)
 BBSF 610F CINDY 86L (P)
SIRE: BOWEN COYBOY C245 (AI) (ET) (P)
 VALMA SOUTHERN STAR (AI) (ET) (P)
 BOWEN ROLLINA N61 (P)
 BOWEN ROLLINA D23 (AI) (P)

KAYNE LEGION W51 (S)
 BOWEN LEGION Z190 (P)
 BOWEN LIONESS U232 (AI) (P)
DAM: PEAKES GLEAM D76 (P)
 LOMA LANGI VERSACE (P)
 PEAKES GLEAM Z192 (P)
 KAYNE GLEAM X284 (P)

MAY 2017 HEREFORD GROUP BREEDPLAN

CED	CEM	GL	BW	200d	400d	600d	Mcw	Milk	SS	CWT	EMA	Rib	Rump	RBV	IMF	SELECTION INDEXES			
-3.2	-0.3	-1.4	+6.1	+32	+49	+68	+67	+11	+1.8	+38	+3.3	+0.3	+0.2	+1.0	+0.3	SM	Grass	Grain	EU
41%	33%	51%	72%	67%	68%	67%	62%	53%	51%	56%	49%	54%	58%	52%	53%	+\$68	+\$63	+\$73	+\$79

Traits Observed: CE,BWT,200WT,400WT,FAT,EMA,IMF

Notes: Sired by carcass sire Cowboy, his dam side of pedigree going back to the very strong Kenya Gleam cow family.

EBV's rated within the breed top 20% gestation length, good EMA & IMF.

Purchaser: \$

LOT 53

BOWEN HOMETOWN L74 (AI) (H)

BWNL74

Eye Pigment: 100/100 Born: 17/07/2015 Age: 24 mths Tattoo: L74

KCF BENNETT 3008 M326 (P)
 SHF WONDER M326 W18 ET (P)
 SHF GOVERNESS 236G L37 (P)
SIRE: NJW 73S W18 HOMETOWN 10Y (IMP USA) (P)
 PW VICTOR BOOMER P606 (P)
 NJW P606 72N DAYDREAM 73S (P)
 NJW 94J DEW 72N (P)

BOWEN VINCENT V1 (S)
 BOWEN LIDDELL Z128 (AI) (P)
 BOWEN FANCY W150 (AI) (P)
DAM: BOWEN FLORRIE C91 (P)
 BOWEN VALOUR V39 (AI) (P)
 BOWEN FLORRIE Y10 (P)
 BOWEN FLORRIE U157 (AI) (ET) (P)

MAY 2017 HEREFORD GROUP BREEDPLAN

CED	CEM	GL	BW	200d	400d	600d	Mcw	Milk	SS	CWT	EMA	Rib	Rump	RBV	IMF	SELECTION INDEXES			
+1.8	+2.4	+2.6	+4.0	+33	+61	+88	+78	+23	+3.3	+60	+5.0	+0.2	-0.7	+1.5	+0.7	SM	Grass	Grain	EU
37%	27%	74%	74%	68%	68%	67%	60%	51%	53%	55%	49%	53%	57%	49%	52%	+\$109	+\$104	+\$126	+\$124

Traits Observed: GL,CE,BWT,200WT,400WT,FAT,EMA,IMF

Notes: Dam Florrie C91 is one of our donor cows, her progeny include maternal half brothers J44, J50, K205 & K217 previously sold at Bowen bull sales. Sire Hometown is one of the top breeding sires from USA in recent times.

EBV's rated within the breed top 5% milk, scrotal & EMA, top 10% 600d, carc. wt & all indexes, top 20% MCW & IMF.

Purchaser: \$



**Brendan Coonan,
 Northern Artificial
 Breeders,
 semen testing the 2017
 Bowen Sale bulls.**

LOT 54

BOWEN HANLEY L147 (P)

BWNL147

Eye Pigment: 100/100 Born: 10/09/2015 Age: 22 mths PP 98% Tattoo: L147

ALLENDALE NATIONAL W168 (P)
 BOWEN DIAMANTINA D203 (AI) (P)
 BOWEN MATCHLESS Z152 (AI) (P)
SIRE: BOWEN HANLEY H92 (P)
 BOWEN ARGYLE A355 (AI) (S)
 PEAKES VICTORIA LASS D201 (P)
 AMOR VICTORIA LASS A157 (P)

BOWEN VINCENT V1 (S)
 DEBARRY SCHOONER (S)
 DIMBY SONIA 32 (P)
DAM: BOWEN HILDA G108 (P)
 ALLENDALE NATIONAL W168 (P)
 BOWEN HILDA C155 (AI) (P)
 BOWEN HILDA Z94 (AI) (P)

MAY 2017 HEREFORD GROUP BREEDPLAN

CED	CEM	GL	BW	200d	400d	600d	Mcw	Milk	SS	CWT	EMA	Rib	Rump	RBV	IMF	SELECTION INDEXES			
-3.1	-2.1	-0.4	+6.7	+41	+61	+89	+88	+11	+1.7	+56	+2.6	-0.4	-0.5	+1.2	+0.1	SM	Grass	Grain	EU
34%	31%	43%	60%	62%	63%	61%	56%	41%	48%	52%	47%	51%	55%	49%	48%	+\$80	+\$72	+\$79	+\$89

Traits Observed: 200WT,400WT,FAT,EMA,IMF

Notes: A similar style of bull to maternal half brother Esplanade K176, sold to the Radford family at the 2016 Bowen bull sale. Note his growth for age, length & quality skin.

EBV's rated within the breed top 5% 200d, top 10% 600d & Mat. cow wt, 15% 400d, top 25% RBV.

Purchaser: \$

LOT 55

BOWEN HANLEY L227 (P)

BWNL227

Eye Pigment: 98/100 Born: 25/09/2015 Age: 21 mths PP 98% Tattoo: L227

ALLENDALE NATIONAL W168 (P)
 BOWEN DIAMANTINA D203 (AI) (P)
 BOWEN MATCHLESS Z152 (AI) (P)
SIRE: BOWEN HANLEY H92 (P)
 BOWEN ARGYLE A355 (AI) (S)
 PEAKES VICTORIA LASS D201 (P)
 AMOR VICTORIA LASS A157 (P)

BRAXTON GIANT THUNDER S138 (IMP NZL) (P)
 BOWEN TORNADO Z260 (AI) (ET) (P)
 BOWEN TRICEL P180 (P)
DAM: BOWEN ROLLINA G198 (AI) (ET) (P)
 BOWEN TRIATHLON T42 (AI) (S)
 BOWEN ROLLINA W237 (P)
 BOWEN ROLLINA P82 (AI) (P)

MAY 2017 HEREFORD GROUP BREEDPLAN

CED	CEM	GL	BW	200d	400d	600d	Mcw	Milk	SS	CWT	EMA	Rib	Rump	RBV	IMF	SELECTION INDEXES			
-4.8	-2.5	-0.1	+6.9	+41	+59	+85	+81	+8	+1.7	+52	+2.7	+0.1	-0.1	+0.8	+0.5	SM	Grass	Grain	EU
36%	31%	44%	67%	62%	61%	60%	53%	43%	48%	50%	45%	48%	52%	46%	46%	+\$81	+\$75	+\$90	+\$93

Traits Observed: BWT,200WT,400WT,FAT,EMA,IMF

Notes: Soft, smooth well balanced. Plenty of length & quality would breed ideal feeder steers & replacement females. His Dam has perfect udder.

Good balanced Indexes. EBV's rated within the breed top 5%200d, top 15% 400d,600d & MCW, top 25% carc.wt.

Purchaser: \$

LOT 56

BOWEN CALIBRE L261 (AI) (ET) (S)

BWNL261

Eye Pigment: 100/100 Born: 13/09/2015 Age: 22 mths PP 98% Tattoo: L261

ALLENDALE VAGABOND A74 (AI) (P)
 ALLENDALE WATERHOUSE D1 (P)
 ALLENDALE MARLINE X185 (P)
SIRE: DAYS CALIBRE G74 (P)
 ALLENDALE ROBIN HOOD Z239 (P)
 ALLENDALE DAWN C62 (AI) (P)
 ALLENDALE DAWN A150 (AI) (ET) (P)

KENYA KIDMAN (P)
 BOWEN ARGYLE A355 (AI) (S)
 BOWEN VIRTUE S307 (P)
DAM: BOWEN KATIE D236 (P)
 BOWEN URALBA U160 (P)
 BOWEN KATIE A336 (P)
 BOWEN KATIE X229 (P)

MAY 2017 HEREFORD GROUP BREEDPLAN

CED	CEM	GL	BW	200d	400d	600d	Mcw	Milk	SS	CWT	EMA	Rib	Rump	RBV	IMF	SELECTION INDEXES			
-1.8	+3.0	-0.8	+5.5	+37	+59	+84	+88	+7	+2.7	+55	+5.0	+0.7	+1.3	+0.7	+1.4	SM	Grass	Grain	EU
46%	39%	58%	63%	60%	60%	61%	58%	53%	56%	53%	45%	49%	53%	47%	52%	+\$103	+\$99	+\$125	+\$118

Traits Observed: BWT,200WT,400WT,FAT,EMA,IMF

Notes: Soft, easy doing, well pigmented & tremendous hind quarter. Donor dam Katie D236 is a top breeder. Full brother to Kyooma K27 1/2 share sold to Melville Herefords & retained for use at "Bowen".

EBV's rated within the breed top 5% EMA & IMF, top 10% 200d & scrotal, top 20% 600d & rump fat. All Indexes top 15% or better.

Purchaser: \$

LOT 57

BOWEN JET FIRE L179 (AI) (S)

BWNL179

Eye Pigment: 100/100 Born: 9/06/2015 Age: 25 mths

PH 98%

Tattoo: L179

KOANUI ROCKET 0219 (IMP NZL) (P)
 PINE HILL CROSSFIRE C558 (AI) (P)
 PINE HILL GHOST MAPLE W16 (AI) (P)
SIRE: YAVENVALE JET FIRE J032 (P)
 KURRAJONG PARK B144 (P)
 YAVENVALE EMPRESS G320 (P)
 YAVENVALE EMPRESS C340 (H#)

ALLENDALE NATIONAL W168 (P)
 DUNOON DIAMANTINA D651 (AI) (S)
 DUNOON FIRST DAY Y200 (H)
DAM: BOWEN ROLIINA H125 (S)
 BOWEN QANTAS Q176 (P)
 BOWEN ROLLINA A352 (AI) (P)
 BOWEN ROLLINA T171 (AI) (P)

MAY 2017 HEREFORD GROUP BREEDPLAN

CED	CEM	GL	BW	200d	400d	600d	Mcw	Milk	SS	CWT	EMA	Rib	Rump	RBV	IMF	SELECTION INDEXES			
+4.8	+3.1	-2.1	+2.3	+28	+46	+66	+52	+20	+2.4	+46	+3.1	+0.9	+1.0	+0.5	+0.8	SM	Grass	Grain	EU
36%	28%	72%	70%	65%	65%	62%	55%	40%	48%	52%	46%	49%	54%	47%	47%	+\$91	+\$89	+\$106	+\$101

Traits Observed: GL, CE, BWT, 200WT, 400WT, FAT, EMA, IMF

Notes: Good safe all round young Sire, soft skin & easy doing. Versatile, would suit heifers & cows.

EBV's rated within the breed top 10% milk & G.L, top 15% B.W, good fats, all indexes top 25% or better.

Purchaser: \$

LOT 58

BOWEN EVEREADY L77 (P)

BWNL77

Eye Pigment: 100/100 Born: 9/08/2015 Age: 23 mths

PP 98%

Tattoo: L77

SKY 236G PREMIER 132K (P)
 OTAPAWA SKYMATE 2046 (IMP NZL) (ET) (P)
 OTAPAWA LEONORA P23 (IMP NZL) (P)
SIRE: BRAYBOOK EVEREADY E385 (AI) (ET) (P)
 VALMA SOUTHERN STAR (AI) (ET) (P)
 BOWEN PRINCESS U130 (P)
 BOWEN PRINCESS P146 (P)

RLOA R271 DYNASTY ET37U (IMP CAN) (P)
 JSF 37 271 DEVO 23C (IMP CAN) (P)
 JSF 183 VICTORIA 7A (IMP CAN) (P)
DAM: BOWEN RUTH Z324 (AI) (P)
 KENYA BEACON 2 (P)
 BOWEN RUTH M17 (AI) (P)
 BOWEN RUTH H18 (AI) (P)

MAY 2017 HEREFORD GROUP BREEDPLAN

CED	CEM	GL	BW	200d	400d	600d	Mcw	Milk	SS	CWT	EMA	Rib	Rump	RBV	IMF	SELECTION INDEXES			
-3.7	+2.8	+0.5	+4.8	+30	+44	+71	+67	+18	+1.3	+44	+2.8	+0.9	+1.2	+0.6	+0.6	SM	Grass	Grain	EU
42%	36%	51%	73%	68%	67%	66%	58%	51%	55%	56%	49%	52%	57%	51%	51%	+\$80	+\$76	+\$89	+\$90

Traits Observed: CE, BWT, 200WT, 400WT, FAT, EMA, IMF

Notes: Dam has been a top producing female, this is the fifth son to be offered at a Bowen bull sales. Eveready L77 is very correct, well balanced with excellent sheath & feet. He will breed terrific carcass feeder steers. Four maternal brothers F64, G25, H135 & J129 sold at previous Bowen Bull Sales.

EBV's rated within the breed top 15% milk, top 20% rib & rump fats, top 25% C.E.Dtrs & IMF.

Purchaser: \$



**BOWEN POLL
 HEREFORD
 WEANERS 2017**

LOT 59

BOWEN FRONTIER L162 (P)

BWNL162

Eye Pigment: 100/100 Born: 13/09/2015 Age: 22 mths HYF, DLF, IEF-PP98% Tattoo: L162

OTAPAWA SKYMATE 2046 (IMP NZL) (ET) (P)
 BRAYBOOK CHEROKEE C200 (AI) (P)
 TYCOLAH DOMINETTE Y56 (P)
SIRE: BOWEN FRONTIER F314 (P)
 ALLENDALE MUSKETEER (AI) (S)
 BOWEN HILDA W188 (P)
 BOWEN HILDA M208 (AI) (P)

ALLENDALE NATIONAL W168 (P)
 BOWEN DIAMANTINA D203 (AI) (P)
 BOWEN MATCHLESS Z152 (AI) (P)
DAM: BOWEN ROLLINA G149 (P)
 BOWEN TORNADO Z260 (AI) (ET) (P)
 BOWEN ROLLINA C144 (P)
 BOWEN ROLLINA W18 (P)

MAY 2017 HEREFORD GROUP BREEDPLAN

CED	CEM	GL	BW	200d	400d	600d	Mcw	Milk	SS	CWT	EMA	Rib	Rump	RBV	IMF	SELECTION INDEXES			
-5.6	-2.0	+0.4	+6.9	+39	+64	+90	+85	+12	+1.5	+54	+3.5	+0.7	+1.1	+0.5	+1.1	SM	Grass	Grain	EU
38%	33%	44%	73%	67%	67%	66%	60%	46%	52%	56%	49%	53%	57%	51%	52%	+\$90	+\$84	+\$107	+\$100

Traits Observed: BWT,200WT,400WT,FAT,EMA,IMF

Notes: Typical Frontier son, great balance, structure & feet. Top body shape.

EBV's rated within the breed top 10% IMF & 200 to 600d, top 15% mat. cow wt, top 20 % carc.wt. Good indexes.

Purchaser: \$

LOT 60

BOWEN CALIBRE L135 (P)

BWNL135

Eye Pigment: 100/100 Born: 4/08/2015 Age: 23 mths PP 98% Tattoo: L135

ALLENDALE VAGABOND A74 (AI) (P)
 ALLENDALE WATERHOUSE D1 (P)
 ALLENDALE MARLINE X185 (P)
SIRE: DAYS CALIBRE G74 (P)
 ALLENDALE ROBIN HOOD Z239 (P)
 ALLENDALE DAWN C62 (AI) (P)
 ALLENDALE DAWN A150 (AI) (ET) (P)

MSU OPTIMUM Z03 (IMP USA) (P)
 HEATHERDALE OPIUM U78 (AI) (P)
 NEILPO MARITANA 29 (P)
DAM: BOWEN CORAL E18 (AI) (P)
 BOWEN VINCENT V1 (S)
 BOWEN CORAL B258 (AI) (P)
 BOWEN CORAL Y204 (P)

MAY 2017 HEREFORD GROUP BREEDPLAN

CED	CEM	GL	BW	200d	400d	600d	Mcw	Milk	SS	CWT	EMA	Rib	Rump	RBV	IMF	SELECTION INDEXES			
+3.3	+3.2	-1.4	+4.2	+31	+50	+73	+73	+8	+3.6	+51	+6.0	+0.4	+0.8	+1.2	+1.2	SM	Grass	Grain	EU
48%	43%	62%	74%	69%	69%	69%	63%	54%	59%	59%	54%	56%	61%	55%	57%	+\$104	+\$103	+\$128	+\$122

Traits Observed: CE,BWT,200WT,400WT,FAT,EMA,IMF

Notes: Maternal half brother J91 & K85 full brother sold at previous Bowen bull sales. Soft smooth skinned sire with a top carcass.

EBV's rated within the breed top 1% EMA, top 5% scrotal & IMF, top 20% C.E. dir, dtr, Gest. L. All indexes top 15% or better.

Purchaser: \$

LOT 61

BOWEN REVOLUTION L158 (AI) (P)

BWNL158

Eye Pigment: 100/100 Born: 29/08/2015 Age: 22 mths PP 98% Tattoo: L158

FELTONS DOMINO 774 (P)
 FELTONS LEGEND 242 (IMP USA) (P)
 FELTONS G15 (P)
SIRE: MSU TCF REVOLUTION 4R (IMP USA) (P)
 REMITALL ONLINE 122L (IMP CAN) (P)
 MSU TCF RACHAEL ET 54N (P)
 HH MISS ADV 786G 1ET (H)

BBSF 3K RANCHMAN 18R (IMP CAN) (P)
 BOWEN COWBOY C245 (AI) (ET) (P)
 BOWEN ROLLINA N61 (P)
DAM: BOWEN MATCHLESS G302 (P)
 KAYNE WINTER W43 (P)
 BOWEN MATCHLESS Z254 (AI) (ET) (P)
 BOWEN MATCHLESS P288 (P)

MAY 2017 HEREFORD GROUP BREEDPLAN

CED	CEM	GL	BW	200d	400d	600d	Mcw	Milk	SS	CWT	EMA	Rib	Rump	RBV	IMF	SELECTION INDEXES			
-0.3	+2.2	-0.3	+4.9	+37	+58	+82	+73	+13	+1.6	+59	+6.0	+0.5	+0.0	+1.6	+0.3	SM	Grass	Grain	EU
43%	35%	74%	72%	68%	68%	67%	60%	54%	54%	57%	52%	55%	58%	52%	54%	+\$95	+\$90	+\$102	+\$107

Traits Observed: GL,CE,BWT,200WT,400WT,FAT,EMA,IMF

Notes: The Revolution 4R daughters I had seen in Canada & USA had consistently good udders & teat placement. He breed very well this son offers an outcross pedigree, soft skin & hair type. Would produce high muscled feeder steers.

EBV's rated within the breed top 1% EMA, top 10% 200d, carc. wt & RBV. Top 20% 400 & 600d. All indexes rated top 25% or better, good IMF.

Purchaser: \$

4 YEARLING BULLS

LOT 62

BOWEN JET FIRE M2 (P)

BWNM002

Eye Pigment: 100/100 Born: 20/03/2016 Age: 16 mths HYF, DLF, IEF-PP98% Tattoo: M002

KOANUI ROCKET 0219 (IMP NZL) (P)
 PINE HILL CROSSFIRE C558 (AI) (P)
 PINE HILL GHOST MAPLE W16 (AI) (P)
SIRE: YAVENVALE JET FIRE J032 (P)
 KURRAJONG PARK B144 (P)
 YAVENVALE EMPRESS G320 (P)
 YAVENVALE EMPRESS C340 (H#)

VALMA SOUTHERN STAR (AI) (ET) (P)
 BOWEN VINCENT V1 (S)
 BOWEN PRINCESS P146 (P)
DAM: PEAKES ADVANCE A343 (AI) (P)
 MERRANLEE SUNDANCE S55 (AI) (P)
 KAYNE ADVANCE W41 (AI) (P)
 KAYNE ADVANCE R154 (P)



MAY 2017 HEREFORD GROUP BREEDPLAN

CED	CEM	GL	BW	200d	400d	600d	Mcw	Milk	SS	CWT	EMA	Rib	Rump	RBV	IMF	SELECTION INDEXES			
+3.4	+4.2	-0.8	+4.3	+35	+62	+86	+76	+20	+3.0	+57	+2.9	+0.2	+0.2	+0.8	+0.3	SM	Grass	Grain	EU
42%	35%	55%	58%	56%	55%	54%	50%	47%	52%	48%	41%	44%	47%	43%	46%				

Traits Observed:

Notes: First of the four younger sires, Jet Fire M2 has that X-Factor, a very attractive calf. Dam Advance A343 is a picture perfect cow, sired by the dominant sire Vincent V1.

EBV's rated within the breed top 5% scrotal, top 10% 400d & milk, top 15% & 600d, top 20% 200d, top 25% carc.wt.

Purchaser: \$

LOT 63

BOWEN JET FIRE M1 (P)

BWNM001

Eye Pigment: 100/100 Born: 4/03/2016 Age: 16 mths HYFU - PP 98% Tattoo: M001

KOANUI ROCKET 0219 (IMP NZL) (P)
 PINE HILL CROSSFIRE C558 (AI) (P)
 PINE HILL GHOST MAPLE W16 (AI) (P)
SIRE: YAVENVALE JET FIRE J032 (P)
 KURRAJONG PARK B144 (P)
 YAVENVALE EMPRESS G320 (P)
 YAVENVALE EMPRESS C340 (H#)

BOWEN ROXBOROUGH R266 (AI) (ET) (P)
 BOWEN URALBA U160 (P)
 ALLENDALE MARLINE L72 (P)
DAM: BOWEN ROLLINA B385 (P)
 BURANDO BRAVEHEART T59 (P)
 BOWEN ROLLINA Y73 (P)
 BOWEN ROLLINA T90 (P)



MAY 2017 HEREFORD GROUP BREEDPLAN

CED	CEM	GL	BW	200d	400d	600d	Mcw	Milk	SS	CWT	EMA	Rib	Rump	RBV	IMF	SELECTION INDEXES			
+3.3	+4.5	-3.4	+3.1	+33	+54	+78	+64	+20	+2.7	+54	+3.3	+0.4	+0.5	+1.0	+0.6	SM	Grass	Grain	EU
40%	31%	54%	60%	57%	56%	56%	52%	44%	53%	49%	41%	45%	49%	44%	46%				

Traits Observed:

Notes: Jet fire J32 son exhibiting a real sires outlook. Donor dam Rollina B385 is a beautiful deep bodied, slick skinned powerful matron, four sons sold in Previous Bowen Bull Sale.

EBV's rated within the breed top 10% milk & scrotal, top 200d & carc.wt, top 25% IMF, moderate birth.

Purchaser: \$

LOT 64**BOWEN GWYDIR M130 (P)**

Eye Pigment: 100/100 Born: 26/04/2016 Age: 15 mths

PP 98%

BWNM130

Tattoo: M130

ALLENDALE NATIONAL W168 (P)
 BOWEN DIAMANTINA D203 (AI) (P)
 BOWEN MATCHLESS Z152 (AI) (P)
SIRE: BOWEN GWYDIR G222 (AI) (ET) (P)
 KENYA LEGION 6 (AI) (P)
 BOWEN ROLLINA Y186 (AI) (P)
 BOWEN ROLLINA U278 (AI) (P)

ALLENDALE KING KONG 2 (S)
 ALLENDALE NATIONAL W168 (P)
 ALLENDALE CORA R22 (P)
DAM: PEAKES LADY ALMOND C101 (AI) (P)
 TYCOLAH ZORRO (P)
 PEAKES LADY ALMOND Z223 (P)
 BINBARRA LADY ALMOND W33 (P)

**MAY 2017 HEREFORD GROUP BREEDPLAN**

CED	CEM	GL	BW	200d	400d	600d	Mcw	Milk	SS	CWT	EMA	Rib	Rump	RBV	IMF	SELECTION INDEXES			
-2.0	-4.5	-0.2	+6.3	+39	+66	+95	+86	+12	+2.8	+60	+3.5	+0.6	+1.0	+0.7	+0.7	SM	Grass	Grain	EU
41%	36%	54%	61%	58%	58%	58%	53%	46%	50%	50%	44%	48%	51%	46%	49%	+\$98	+\$92	+\$109	+\$108

Traits Observed: BWT

Notes: A very attractive Gwydir G222 Son, his Dam Lady Almond C101 has bred two maternal brothers F175 & H248 sold in previous Bowen Bull sales.

EBV's rated within the breed top 5% 400d & 600d, top 10% 200d, MCW, scrotal & carc.wt, top 20% IMF.

Purchaser: \$

LOT 65**BOWEN COORS LIGHT M3 (P)**

Eye Pigment: 100/100 Born: 27/03/2016 Age: 15 mths

PP 98%

BWNM003

Tattoo: M003

FELTONS SOUNDER 957 (P)
 EFBEEF FOREMOST U208 (IMP USA) (P)
 EFBEEF G824 KATE S610 ET (P)
SIRE: BOWEN COORS LIGHT J53 (AI) (ET) (P)
 BOWEN URALBA U160 (P)
 BOWEN ROLLINA B385 (P)
 BOWEN ROLLINA Y73 (P)

ALLENDALE KING KONG 2 (S)
 ALLENDALE NATIONAL W168 (P)
 ALLENDALE CORA R22 (P)
DAM: BOWEN HILDA C155 (AI) (P)
 BOWEN VINDICATOR V331 (P)
 BOWEN HILDA Z94 (AI) (P)
 BOWEN HILDA W414 (AI) (ET) (P)

MAY 2017 HEREFORD GROUP BREEDPLAN

CED	CEM	GL	BW	200d	400d	600d	Mcw	Milk	SS	CWT	EMA	Rib	Rump	RBV	IMF	SELECTION INDEXES			
+2.0	+3.6	-4.1	+3.1	+36	+54	+72	+57	+16	+2.3	+54	+3.4	+0.4	+0.3	+1.1	+0.4	SM	Grass	Grain	EU
37%	32%	51%	55%	52%	50%	52%	49%	46%	43%	44%	37%	41%	43%	39%	41%				

Traits Observed:

Notes: Fantastic carcass to this lad, he will certainly produce high yielding progeny.

Smooth soft young sire low birth & good milk, EBV's rated within the breed top 5% G.L, top 20% scrotal & carc.wt.

Purchaser: \$