

POLL HEREFORD SIRES



Twenty Twelve 190Z

The first of his sons sell this year. Purchased semen after seeing him in Denver 2015. He has muscle mass is high yielding and suit the Australian type we like with strong maternal lines. Trait leader 400d, 600d, top 1% EMA and top 5% milk.



The Ranch Tipperary J06

The first of his sons sell this year. Purchased Dubbo National 2015 \$36,000, Intermediate Champion. Impeccable structure, moderate birth, positive fats and excellent milk.



Bowen Cowboy C245

Consistant breeder with a top carcass exceptional soundness at 10 years of age. Trait leader for Gestation Length.



Bowen Gwydir G222

Home bred sire retained at "Bowen" our best son of Diamantina D203. Trait Leader for 200d, 400d and 600d.



Yavenvale Jet Fire J032

Short gestation, low birth weight and high milk sire with exceptional phonetype breeding soft easy doing progeny.



Days Calibre G74

Owned in partnership with Melville Park stud, Calibre was 2013 Dubbo Champion. Trait leader 400d, 600d, scrotal, EMA, RBV & IMF.

LOTS 1 - 66

66 PH BULLS

LOT 1

BOWEN MAGISTRATE M241 (AI) (P)

BWNM241

Eye Pigment: 100-100 Born: 20/06/2016 Age: 25 mths

PP,IEF,HYF,DLF,

Tattoo: M241

KOANUI ROCKET 0219 (IMP NZL) (P)
 PINE HILL CROSSFIRE C558 (AI) (P)
 PINE HILL GHOST MAPLE W16 (AI) (P)
SIRE: YAVENVALE JET FIRE J032 (P)
 KURRAJONG PARK B144 (P)
 YAVENVALE EMPRESS G320 (P)
 YAVENVALE EMPRESS C340 (H#)

ALLENDALE WATERHOUSE D1 (P)
 HUNTER LAKES FONZ F15 (AI) (P)
 BOWEN RUTH B59 (P)
DAM: BOWEN IRISH GIRL J269 (P)
 BOWEN WESTERN STAR W35 (AI) (P)
 BOWEN IRISH GIRL A152 (AI) (P)
 BOWEN IRISH GIRL U182 (AI) (P)



MAY 2018 HEREFORD GROUP BREEDPLAN

CED	CEM	GL	BW	200d	400d	600d	Mcw	Milk	SS	CWT	EMA	Rib	Rump	RBV	IMF	SELECTION INDEXES			
+3.6	+4.4	-4.2	+4.0	+34	+64	+86	+76	+19	+2.8	+60	+4.2	+0.3	+0.3	+1.3	+0.7	SM	Grass	Grain	EU
44%	32%	73%	72%	67%	67%	65%	57%	40%	57%	54%	48%	53%	57%	50%	52%	+\$112	+\$108	+\$127	+\$125

Traits Observed: GL,CE,BWT,200WT,400WT,FAT,EMA,IMF,Genomics

Notes: Wow Magistrate catches your eye as soon as you see him with his power & performance. Stud sire potential- excels in weight for age, tremendous carcass attributes. Excellent performance data, maternally Irish Girl U182 & Ruth B69 (owned by the Hunter Lakes Stud) both Donor Dams. M241 has moderate Birth, positive fats, top 5% of breed Gestation length, top 10% scrotal, supermarket & EU indexes, top 15% 400 day weight, carcass weight, grass & grain indexes, top 20% milk, IMF, EMA & RBV.

Purchaser: \$

LOT 2

BOWEN MYSTIC M265 (AI) (P)

BWNM265

Eye Pigment: 100-100 Born: 9/08/2016 Age: 23.5 mths

PP,IEF,HYF,DLF,

Tattoo: M265

KCF BENNETT 3008 M326 (P)
 NJW 73S M326 TRUST 100W ET (IMP USA) (ET) (P)
 NJW P606 72N DAYDREAM 73S (P)
SIRE: NJW 78P TWENTYTWELVE 190Z (IMP AUS) (AI) (ET) (P)
 RU 20X BOULDER 57G (IMP CAN) (P)
 NJW BW LADYSPORT DEW 78P ET (P)
 SADDLE-VALLEY LADYSPORT 120J (P)

BOWEN ARGYLE A355 (AI) (S)
 BOWEN CROWN PRINCE C330 (AI) (P)
 BOWEN PRINCESS T65 (P)
DAM: BOWEN MARLINE H181 (P)
 BOWEN VINCENT V1 (S)
 BOWEN MARLINE B28 (AI) (P)
 BOWEN MARLINE X112 (AI) (ET) (P)



MAY 2018 HEREFORD GROUP BREEDPLAN

CED	CEM	GL	BW	200d	400d	600d	Mcw	Milk	SS	CWT	EMA	Rib	Rump	RBV	IMF	SELECTION INDEXES			
-3.6	+0.7	+2.0	+4.4	+30	+49	+73	+63	+18	+1.7	+47	+5.4	+0.6	+0.5	+1.3	+0.4	SM	Grass	Grain	EU
43%	31%	74%	72%	67%	67%	65%	57%	41%	58%	54%	48%	51%	55%	48%	49%	+\$82	+\$78	+\$90	+\$92

Traits Observed: GL,CE,BWT,200WT,400WT,FAT,EMA,IMF,Genomics

Notes: After inspecting the NJW Twenty Twelve sire in 2015 in Denver we decided to import semen given his phenotype, performance pedigree & female lines. Mystic ticks all the box's, sound correct, excellent sires head & pigment. Twenty Twelve has been adding extra carcass to his progeny this fellow has outstanding performance data & his pedigree is stacked with the outstanding cow families of Ladysport, Daydream, Marline & Princess. Maternal brother sold in 2017 Bowen Bull sale. Ebvs rated top 5% EMA, top 20% RBV, top 25% milk, good IMF, rib & Rump fats.

Purchaser: \$

LOT 3

BOWEN MANTRA M139 (P)

BWNM139

Eye Pigment: 100-100 Born: 8/08/2016 Age: 23.5 mths

PP,IEF,HYF,DLF,

Tattoo: M139

ALLENDALE VAGABOND A74 (AI) (P)
 ALLENDALE WATERHOUSE D1 (P)
 ALLENDALE MARLINE X185 (P)
SIRE: DAYS CALIBRE G74 (P)
 ALLENDALE ROBIN HOOD Z239 (P)
 ALLENDALE DAWN C62 (AI) (P)
 ALLENDALE DAWN A150 (AI) (ET) (P)

STUDBROOK NESS N67 (AI) (ET) (P)
 KAYNE GIBRALTAR X279 (P)
 KENYA LARGESS 61 (P)
DAM: BOWEN TRICEL C50 (AI) (P)
 BRAXTON WESTWIND 120M (IMP NZL) (P)
 BOWEN TRICEL X169 (AI) (P)
 BOWEN TRICEL S018 (P)



MAY 2018 HEREFORD GROUP BREEDPLAN

CED	CEM	GL	BW	200d	400d	600d	Mcw	Milk	SS	CWT	EMA	Rib	Rump	RBV	IMF	SELECTION INDEXES			
-2.6	+3.4	+0.5	+5.9	+33	+55	+79	+93	+9	+2.2	+48	+5.2	+0.0	+0.2	+1.3	+1.1	SM	Grass	Grain	EU
51%	44%	65%	74%	69%	69%	69%	63%	57%	63%	59%	54%	57%	61%	56%	57%	+\$91	+\$88	+\$109	+\$107

Traits Observed: CE,BWT,200WT,400WT,FAT,EMA,IMF,Genomics

Notes: Excellent weight for age with beautiful balance & style. This bull exhibits all the traits we strive to breed for, with a combination of outstanding cow families Marline, Dawn, Tricel & Largess. Ebvs rated within the breed top 10% IMF & EMA, top 20% RBV.

Purchaser: \$

LOT 4

BOWEN MOOLOOLABA M281 (P)

BWNM281

Eye Pigment: 100-100 Born: 31/07/2016 Age: 23.5 mths

PP,IEF,HYF,DLF,

Tattoo: M281

ALLENDALE TIPPERARY D13 (AI) (ET) (P)
 DAYS WIZARD F84 (P)
 ALLENDALE DAWN Z21 (AI) (P)
SIRE: THE RANCH TIPPERARY J06 (AI) (P)
 KIDMAN TAIT C194 (P)
 THE RANCH SUSAN F02 (P)
 THE RANCH SUSAN C82 (P)

4K KFF KAZZ (IMP USA) (P)
 BOWEN VALOUR V39 (AI) (P)
 BOWEN MATCHLESS S238 (AI) (ET) (P)
DAM: PEAKES LADY ALMOND C29 (AI) (P)
 WOMBOYNE SHANTY S121 (P)
 BINBARRA LADY ALMOND W33 (P)
 BINBARRA LADY ALMOND T21 (P)



MAY 2018 HEREFORD GROUP BREEDPLAN

CED	CEM	GL	BW	200d	400d	600d	Mcw	Milk	SS	CWT	EMA	Rib	Rump	RBV	IMF	SELECTION INDEXES			
-3.1	-1.2	+0.7	+5.8	+36	+58	+76	+71	+16	+2.5	+49	+2.5	+0.4	+0.4	+0.6	+0.0	SM	Grass	Grain	EU
39%	29%	51%	72%	66%	65%	63%	55%	44%	52%	52%	45%	50%	54%	47%	46%	+\$71	+\$66	+\$69	+\$77

Traits Observed: CE,BWT,200WT,400WT,FAT,EMA,IMF,Genomics

Notes: Outstanding son of Tipperary that fills right into his lower thigh, has fantastic phenotype & carcass with great structure. Good milk, ebvs rated top 20% scrotal, top 25% 200 day weight with positive fats.

Purchaser: \$

LOT 5**BOWEN MARIO M108 (P)****BWNM108**

Eye Pigment: 100-100 Born: 14/08/2016 Age: 23.0 mths

PP,IEF,HYF,DLF,

Tattoo: M108

ALLEDALE TIPPERARY D13 (AI) (ET) (P)
 DAYS WIZARD F84 (P)
 ALLEDALE DAWN Z21 (AI) (P)
SIRE: THE RANCH TIPPERARY J06 (AI) (P)
 KIDMAN TAIT C194 (P)
 THE RANCH SUSAN F02 (P)
 THE RANCH SUSAN C82 (P)

BBSF 3K RANCHMAN 18R (IMP CAN) (P)
 BOWEN COWBOY C245 (AI) (ET) (P)
 BOWEN ROLLINA N61 (P)
DAM: BOWEN LADY ALMOND H188 (P)
 TYCOLAH ZORRO (P)
 PEAKES LADY ALMOND Z223 (P)
 BINBARRA LADY ALMOND W33 (P)

MAY 2018 HEREFORD GROUP BREEDPLAN

CED	CEM	GL	BW	200d	400d	600d	Mcw	Milk	SS	CWT	EMA	Rib	Rump	RBV	IMF	SELECTION INDEXES			
+1.0	+1.4	-0.5	+4.9	+35	+63	+84	+68	+19	+2.2	+55	+4.0	+1.2	+1.7	+0.4	+0.7	SM	Grass	Grain	EU
39%	28%	47%	71%	66%	65%	63%	54%	40%	54%	52%	46%	50%	54%	47%	47%	+\$100	+\$97	+\$113	+\$108

Traits Observed: CE,BWT,200WT,400WT,FAT,EMA,IMF,Genomics

Notes: Mario certainly ticks a lot of box's, a Tipperary son that really takes your eye with his soft slick skin, excellent structure, carcass & phenotype. His data is exceptional, ebvs rated top 10% rump fat, top 15% 400 day weight, rib fat. Top 20% milk, top 25% 200 day,

Purchaser: \$

LOT 6**BOWEN MAJOR M290 (P)****BWNM290**

Eye Pigment: 100-100 Born: 12/08/2016 Age: 23.0 mths

PP,IEF,HYF,DLF,

Tattoo: M290

ALLEDALE TIPPERARY D13 (AI) (ET) (P)
 DAYS WIZARD F84 (P)
 ALLEDALE DAWN Z21 (AI) (P)
SIRE: THE RANCH TIPPERARY J06 (AI) (P)
 KIDMAN TAIT C194 (P)
 THE RANCH SUSAN F02 (P)
 THE RANCH SUSAN C82 (P)

BRIDGE POWERPLAY (AI) (ET) (S)
 DEBARRY HIGHLANDER 2 (AI) (S)
 DEBARRY LAST DAY T103 (P)
DAM: PEAKES PRUNELLA B9 (P)
 VALMA SOUTHERN STAR (AI) (ET) (P)
 CAS PRUNELLA U114 (P)
 CAS PRUNELLA N140 (P)

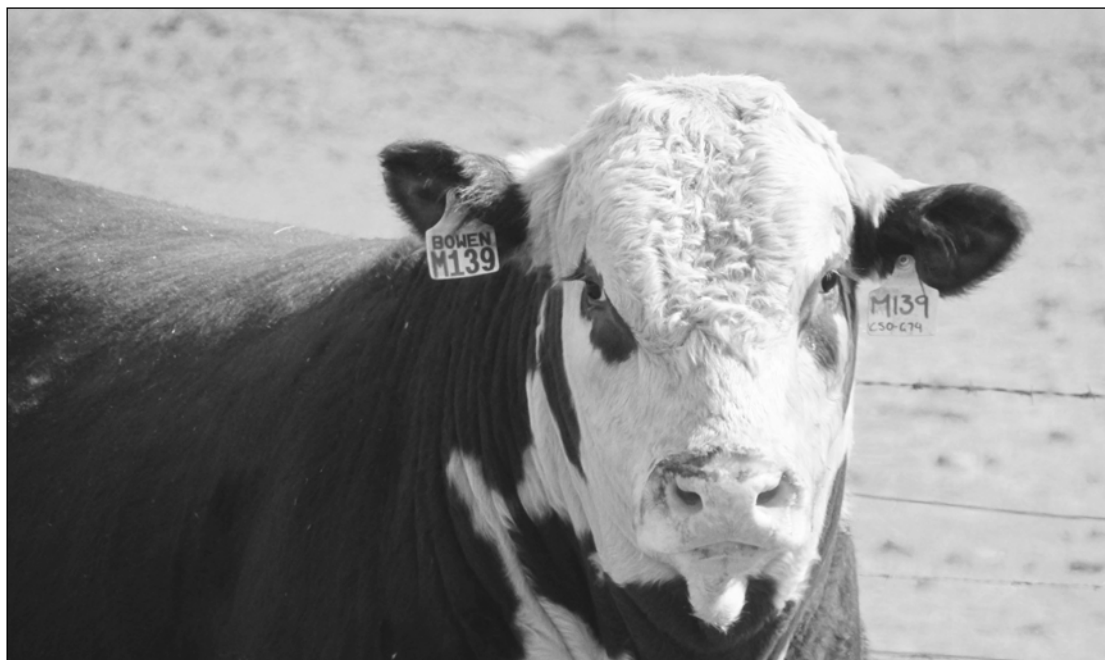
MAY 2018 HEREFORD GROUP BREEDPLAN

CED	CEM	GL	BW	200d	400d	600d	Mcw	Milk	SS	CWT	EMA	Rib	Rump	RBV	IMF	SELECTION INDEXES			
-5.3	-0.7	+1.0	+3.9	+27	+42	+60	+48	+16	+2.4	+37	+2.2	+1.1	+1.5	+0.0	+0.1	SM	Grass	Grain	EU
41%	32%	48%	66%	65%	65%	63%	55%	44%	55%	54%	48%	52%	56%	50%	49%	+\$60	+\$57	+\$62	+\$65

Traits Observed: CE,200WT,400WT,FAT,EMA,IMF,Genomics

Notes: Major features great depth of body has low birth ebvs & is lighter boned, a very safe, sound athletic sire. He will produce soft easy doing weaners with loads of weight. Ebvs rated within the breed top 15% rib, rump fats, top 25% scrotal, has good milk & low birth.

Purchaser: \$



LOT 7

BOWEN MAGENTA M240 (AI) (P)

BWNM240

Eye Pigment: 100-100 Born: 15/07/2016 Age: 24.0 mths

PP,IEF,HYF,DLF,

Tattoo: M240

KOANUI ROCKET 0219 (IMP NZL) (P)
 PINE HILL CROSSFIRE C558 (AI) (P)
 PINE HILL GHOST MAPLE W16 (AI) (P)
SIRE: YAVENVALE JET FIRE J032 (P)
 KURRAJONG PARK B144 (P)
 YAVENVALE EMPRESS G320 (P)
 YAVENVALE EMPRESS C340 (H#)



ALLENDALE NATIONAL W168 (P)
 BOWEN DIAMANTINA D203 (AI) (P)
 BOWEN MATCHLESS Z152 (AI) (P)
DAM: BOWEN MATCHLESS J306 (AI) (ET) (TW) (P)
 BOWEN TORNADO Z260 (AI) (ET) (P)
 RILO PARK MATCHLESS C10 (AI) (ET) (P)
 BOWEN MATCHLESS L140 (AI) (P)

MAY 2018 HEREFORD GROUP BREEDPLAN

CED	CEM	GL	BW	200d	400d	600d	Mcw	Milk	SS	CWT	EMA	Rib	Rump	RBV	IMF	SELECTION INDEXES			
-1.1	-2.5	-1.8	+6.2	+43	+75	+102	+94	+17	+2.4	+66	+2.1	-0.2	-0.7	+0.8	+0.4	SM	Grass	Grain	EU
46%	35%	74%	71%	66%	66%	64%	57%	41%	59%	54%	50%	52%	57%	50%	52%	+\$99	+\$91	+\$105	+\$107

Traits Observed: GL,CE,BWT,200WT,400WT,FAT,EMA,IMF,Genomics

Notes: Magenta always stood out from a young calf, he is pure quality & will pack the weight into is progeny. Offers calving ease genetics from Jet Fire yet has high yielding growth weight & performance from his dams side of pedigree. Good IMF data , Ebvs rated within the breed top 1% 400 day, top 5% 200 day, 600day, mature cow weight & carcass weight, top 15% gestation length, top 25% scrotal & supermarket index.

Purchaser: \$

LOT 8

BOWEN MASTER M107 (P)

BWNM107

Eye Pigment: 100-100 Born: 6/08/2016 Age: 23.5 mths

PP,IEF,HYF,DLF,

Tattoo: M107

ALLENDALE TIPPERARY D13 (AI) (ET) (P)
 DAYS WIZARD F84 (P)
 ALLENDALE DAWN Z21 (AI) (P)
SIRE: THE RANCH TIPPERARY J06 (AI) (P)
 KIDMAN TAIT C194 (P)
 THE RANCH SUSAN F02 (P)
 THE RANCH SUSAN C82 (P)

BRAYBOOK CHEROKEE C200 (AI) (P)
 BOWEN FRONTIER F314 (P)
 BOWEN HILDA W188 (P)
DAM: BOWEN IRISH GIRL J259 (P)
 DEBARRY HIGHLANDER 2 (AI) (S)
 PEAKES IRISH GIRL A346 (AI) (P)
 CAS IRISH GIRL S89 (AI) (P)

MAY 2018 HEREFORD GROUP BREEDPLAN

CED	CEM	GL	BW	200d	400d	600d	Mcw	Milk	SS	CWT	EMA	Rib	Rump	RBV	IMF	SELECTION INDEXES			
-5.8	-1.9	-0.8	+6.2	+36	+57	+81	+77	+16	+1.5	+50	+3.7	+0.9	+1.4	+0.6	+0.4	SM	Grass	Grain	EU
38%	27%	47%	72%	66%	65%	64%	55%	39%	54%	52%	46%	51%	56%	48%	48%	+\$74	+\$69	+\$77	+\$79

Traits Observed: CE,BWT,200WT,400WT,FAT,EMA,IMF,Genomics

Notes: Master certainly catches your eye with his style & natural athletic type. He has a high-class pedigree combining the Irish Girl & Hilda cow lines in his dams side of the pedigree. Good milk, EMA & IMF. Ebvs rated top 20% rump fat, top 25% rib fat & 200 day weight.

Purchaser: \$

LOT 9

BOWEN MCCOY M171 (P)

BWNM171

Eye Pigment: 100-100 Born: 15/09/2016 Age: 22.0 mths

DLF,IEF,HYF,

Tattoo: M171

ALLENDALE VAGABOND A74 (AI) (P)
 ALLENDALE WATERHOUSE D1 (P)
 ALLENDALE MARLINE X185 (P)
SIRE: DAYS CALIBRE G74 (P)
 ALLENDALE ROBIN HOOD Z239 (P)
 ALLENDALE DAWN C62 (AI) (P)
 ALLENDALE DAWN A150 (AI) (ET) (P)

BRAXTON GIANT THUNDER S138 (IMP NZL) (P)
 BOWEN TORNADO Z260 (AI) (ET) (P)
 BOWEN TRICEL P180 (P)
DAM: BOWEN MAPLE G94 (AI) (P)
 DEBARRY EDEN (P)
 BOWEN MAPLE E90 (AI) (P)
 BOWEN MAPLE B182 (AI) (ET) (P)



MAY 2018 HEREFORD GROUP BREEDPLAN

CED	CEM	GL	BW	200d	400d	600d	Mcw	Milk	SS	CWT	EMA	Rib	Rump	RBV	IMF	SELECTION INDEXES			
-0.3	+6.4	+0.8	+5.9	+41	+67	+103	+108	+11	+3.3	+66	+5.6	+0.2	+0.4	+1.5	+1.6	SM	Grass	Grain	EU
53%	47%	65%	73%	69%	69%	68%	64%	56%	64%	59%	55%	57%	61%	55%	57%	+\$129	+\$125	+\$157	+\$147

Traits Observed: BWT,200WT,400WT,FAT,EMA,IMF,Genomics

Notes: This fellow is the real McCoy! Excels in soundness of structure, features style & outstanding performance. Pedigree combines the exceptional cow families of Maple, Tricel, Dawn & Marline. Ebvs rated top 1% mature cow weight, top 5% for all indexes, scrotal, carcass weight, EMA, IMF, top 10% 200 to 600 day weights, RBV top 15% & positive fats.

Purchaser: \$

LOT 10

BOWEN MARVEL M127 (P)

BWNM127

Eye Pigment: 100-100 Born: 29/07/2016 Age: 23.5 mths

PP,IEF,HYF,DLF,

Tattoo: M127

ALLENDALE WATERHOUSE D1 (P)
 DAYS CALIBRE G74 (P)
 ALLENDALE DAWN C62 (AI) (P)
SIRE: BOWEN KYOOMA K27 (P)
 BOWEN ARGYLE A355 (AI) (S)
 BOWEN KATIE D236 (P)
 BOWEN KATIE A336 (P)

BRAXTON GIANT THUNDER S138 (IMP NZL) (P)
 BOWEN TORNADO Z260 (AI) (ET) (P)
 BOWEN TRICEL P180 (P)
DAM: BOWEN HARMONY D261 (AI) (ET) (P)
 MONREID RICHMAN (AI) (H)
 MONREID HARMONY T523 (H)
 MONREID HARMONY Q485 (H)



MAY 2018 HEREFORD GROUP BREEDPLAN

CED	CEM	GL	BW	200d	400d	600d	Mcw	Milk	SS	CWT	EMA	Rib	Rump	RBV	IMF	SELECTION INDEXES			
+0.8	+3.5	-0.2	+5.2	+37	+62	+88	+82	+11	+2.1	+56	+4.7	+0.2	+0.4	+1.1	+1.3	SM	Grass	Grain	EU
41%	34%	50%	72%	66%	65%	64%	58%	47%	54%	54%	48%	52%	56%	50%	50%	+\$113	+\$110	+\$138	+\$128

Traits Observed: CE,BWT,200WT,400WT,FAT,EMA,IMF,Genomics

Notes: This is real performance with style. This bull has always been a standout, great carcass features, long bodied with depth & data. Dam originating from the Monried Harmony line. We will be retaining semen for use at Bowen. Ebvs rated within the breed top 5% IMF, top 10% EMA & all indexes, top 10% 200 to 600 day weights & top 25% carcass weight.

Purchaser: \$

LOT 11

BOWEN MOUSAKA M209 (P)

BWNM209

Eye Pigment: 100-100 Born: 13/07/2016 Age: 24.0 mths

PP,IEF,HYF,DLF,

Tattoo: M209

KOANUI ROCKET 0219 (IMP NZL) (P)
 PINE HILL CROSSFIRE C558 (AI) (P)
 PINE HILL GHOST MAPLE W16 (AI) (P)
SIRE: YAVENVALE JET FIRE J032 (P)
 KURRAJONG PARK B144 (P)
 YAVENVALE EMPRESS G320 (P)
 YAVENVALE EMPRESS C340 (H#)

OTAPAWA SPARK 3060 (ET) (IMP NZL) (AI) (ET) (P)
 BOWEN FLASHER F140 (AI) (P)
 BOWEN MATCHLESS B157 (AI) (ET) (P)
DAM: BOWEN HUMBLE J227 (AI) (P)
 RILO PARK UNSHAKEABLE (AI) (ET) (P)
 PEAKES HUMBLE E165 (AI) (P)
 AMOR HUMBLE B52 (P)



MAY 2018 HEREFORD GROUP BREEDPLAN

CED	CEM	GL	BW	200d	400d	600d	Mcw	Milk	SS	CWT	EMA	Rib	Rump	RBV	IMF	SELECTION INDEXES			
+1.2	+3.4	-1.6	+4.9	+35	+61	+82	+76	+18	+2.1	+50	+2.3	+0.1	-0.4	+0.5	+1.1	SM	Grass	Grain	EU
44%	32%	60%	65%	64%	66%	63%	56%	40%	58%	54%	49%	53%	57%	51%	52%	+\$93	+\$89	+\$113	+\$105

Traits Observed: CE,200WT,400WT,FAT,EMA,IMF,Genomics

Notes: Mousaka is an outstanding, high marbling quality son of Jet Fire with great calving ease genetics. Impressive pedigree containing some of the breeds top performing sires. Ebvs rated top 10% IMF, top 20% gestation length, top 25% milk & grain fed index.

Purchaser: \$

LOT 12

BOWEN MILO M85 (S)

BWNM085

Eye Pigment: 100-100 Born: 25/07/2016 Age: 24.0 mths

HP,IEF,HYF,DLF,

Tattoo: M085

KOANUI ROCKET 0219 (IMP NZL) (P)
 PINE HILL CROSSFIRE C558 (AI) (P)
 PINE HILL GHOST MAPLE W16 (AI) (P)
SIRE: YAVENVALE JET FIRE J032 (P)
 KURRAJONG PARK B144 (P)
 YAVENVALE EMPRESS G320 (P)
 YAVENVALE EMPRESS C340 (H#)

KENYA KIDMAN (P)
 BOWEN ARGYLE A355 (AI) (S)
 BOWEN VIRTUE S307 (P)
DAM: BOWEN ROLLINA C179 (AI) (P)
 LOMA LANGI VERSACE (P)
 BOWEN ROLLINA Z73 (TW) (P)
 BOWEN ROLLINA W18 (P)

MAY 2018 HEREFORD GROUP BREEDPLAN

CED	CEM	GL	BW	200d	400d	600d	Mcw	Milk	SS	CWT	EMA	Rib	Rump	RBV	IMF	SELECTION INDEXES			
-7.2	+0.9	+0.0	+7.7	+45	+67	+96	+87	+18	+1.8	+56	+3.0	-0.6	-1.2	+1.6	+0.3	SM	Grass	Grain	EU
46%	34%	63%	73%	68%	68%	66%	59%	45%	59%	55%	50%	54%	58%	52%	53%	+\$81	+\$73	+\$85	+\$90

Traits Observed: CE,BWT,200WT,400WT,FAT,EMA,IMF,Genomics

Notes: Powerful sire with a standout profile, he has a real presence & sires outlook. Milo has the excellent butter smooth skin & doing ability that his sire Jet Fire produces in his progeny. Ebvs rated within the bred top 5% gestation length, 200day weight, top 10% 400, 600day weight & RBV, top 15% mature cow weight, top 25% milk & carcass weight.

Purchaser: \$

LOT 13

BOWEN MAGAN M219 (P)

BWNM219

Eye Pigment: 100-100 Born: 7/08/2016 Age: 23.5 mths

PP,IEF,HYF,DLF,

Tattoo: M219

KOANUI ROCKET 0219 (IMP NZL) (P)
 PINE HILL CROSSFIRE C558 (AI) (P)
 PINE HILL GHOST MAPLE W16 (AI) (P)
SIRE: YAVENVALE JET FIRE J032 (P)
 KURRAJONG PARK B144 (P)
 YAVENVALE EMPRESS G320 (P)
 YAVENVALE EMPRESS C340 (H#)

BOWEN MINISTER Y168 (S)
 STUDBROOK PRINCE B034 (S)
 BOWEN PRINCESS T65 (P)
DAM: BOWEN MATCHLESS D292 (P)
 ALLENDALE OCTAGONAL (AI) (P)
 BOWEN MATCHLESS Y195 (P)
 BOWEN MATCHLESS V15 (AI) (P)



MAY 2018 HEREFORD GROUP BREEDPLAN

CED	CEM	GL	BW	200d	400d	600d	Mcw	Milk	SS	CWT	EMA	Rib	Rump	RBV	IMF	SELECTION INDEXES			
+1.3	+0.9	-0.6	+3.5	+31	+60	+79	+64	+18	+2.6	+52	+3.9	-0.3	-0.6	+1.4	+0.5	SM	Grass	Grain	EU
46%	33%	61%	72%	67%	68%	66%	59%	45%	58%	56%	50%	54%	59%	52%	53%	+\$92	+\$88	+\$104	+\$103

Traits Observed: CE,BWT,200WT,400WT,FAT,EMA,IMF,Genomics

Notes: Magan has sire appeal with soundness of structure, slick skin & hair type. Very balanced data set. Ebvs rated top 15% RBV, top 25% 400day weight, Milk & EMA. Good birth weight & IMF. Maternal brother sold in 2015 Bowen Bull sale for \$16,000

Purchaser: \$

LOT 14

BOWEN MANUKA M230 (S)

BWNM230

Eye Pigment: 100-100 Born: 13/08/2016 Age: 23.0 mths

HP,IEF,HYF,DLF,

Tattoo: M230

ALLENDALE TIPPERARY D13 (AI) (ET) (P)
 DAYS WIZARD F84 (P)
 ALLENDALE DAWN Z21 (AI) (P)
SIRE: THE RANCH TIPPERARY J06 (AI) (P)
 KIDMAN TAIT C194 (P)
 THE RANCH SUSAN F02 (P)
 THE RANCH SUSAN C82 (P)

MOUNTAIN VALLEY ROCKYNEED B1 (P)
 CASCADE EL DORADO E27 (P)
 CASCADE IRISH MAID A37 (AI) (P)
DAM: BOWEN LEONORA H39 (AI) (S)
 MONYMUSK DISCOVERY L34 (IMP NZL) (P)
 BOWEN LEONORA B168 (AI) (ET) (P)
 OTAPAWA LEONORA P23 (IMP NZL) (P)



MAY 2018 HEREFORD GROUP BREEDPLAN

CED	CEM	GL	BW	200d	400d	600d	Mcw	Milk	SS	CWT	EMA	Rib	Rump	RBV	IMF	SELECTION INDEXES			
-2.1	-1.4	+1.3	+4.9	+31	+64	+90	+84	+19	+1.9	+58	+3.2	+1.1	+1.8	-0.1	+1.1	SM	Grass	Grain	EU
41%	31%	52%	72%	66%	66%	64%	57%	42%	55%	53%	48%	51%	55%	49%	48%	+\$96	+\$91	+\$112	+\$102

Traits Observed: CE,BWT,200WT,400WT,FAT,EMA,IMF,Genomics

Notes: The first drop of The Ranch Tipperary progeny. A very attractive style of bull with outstanding performance data he is a real performance package. Maternal brother sold in 2017 Bowen Bull sale. Ebvs rated top 10% rump fat & IMF, top 15% 400,600 day, mature cow weight & rib fat, top 20% milk & carcass weight.

Purchaser: \$

LOT 15

BOWEN MELLOR M125 (P)

BWNM125

Eye Pigment: 100-100 Born: 14/07/2016 Age: 24.0 mths

PP,IEF,HYF,DLF,

Tattoo: M125

ALLENDALE NATIONAL W168 (P)
 BOWEN DIAMANTINA D203 (AI) (P)
 BOWEN MATCHLESS Z152 (AI) (P)
SIRE: BOWEN GWYDIR G222 (AI) (ET) (P)
 KENYA LEGION 6 (AI) (P)
 BOWEN ROLLINA Y186 (AI) (P)
 BOWEN ROLLINA U278 (AI) (P)

KLONDIKE 500Z FEDERATION 7C (IMP CAN) (P)
 DXB 7C BLOCKBUSTER 3K (IMP CAN) (P)
 SADDLE-VALLEY 46B DONNA 833H (IMP CAN) (P)
DAM: BOWEN MATCHLESS B176 (AI) (ET) (P)
 BRONWYN T205-MOCCONA K40 (AI) (ET) (P)
 BOWEN MATCHLESS S238 (AI) (ET) (P)
 BOWEN MATCHLESS G36 (P)



MAY 2018 HEREFORD GROUP BREEDPLAN

CED	CEM	GL	BW	200d	400d	600d	Mcw	Milk	SS	CWT	EMA	Rib	Rump	RBV	IMF	SELECTION INDEXES			
-9.5	-10.8	+0.6	+6.7	+44	+66	+95	+95	+11	+2.6	+61	+3.3	-0.5	-0.9	+1.3	-0.3	SM	Grass	Grain	EU
43%	35%	54%	73%	67%	68%	66%	59%	48%	58%	56%	50%	54%	59%	52%	53%	+\$67	+\$57	+\$57	+\$73

Traits Observed: CE,BWT,200WT,400WT,FAT,EMA,IMF,Genomics

Notes: This Gwydir son is a real eye catcher, strong & mobile with a lot of his sires attributes crossed with the great Matchless cow family. Maternal sister sold in Bowen Anniversary female sale in 2012 for \$6000. Ebvs rated top 5% 200 day & mature cow weight, top 10% 400, 600day & carcass weight, top 15% scrotal & carcass weight& top 20% RBV.

Purchaser: \$

LOT 16

COURALLIE WALLACE M593 (AI) (S)

HH1M593

Eye Pigment: 100-100 Born: 24/07/2016 Age: 24.0 mths

HP,IEF,HYF,DLF,

Tattoo: M593

SOUTH BUKALONG WALKER 6 (AI) (P)
 SOUTH BUKALONG WALLACE 2 (P)
 SOUTH BUKALONG VICTORIA 152 (P)
SIRE: ELITE Y781 H284 (AI) (P)
 MOUNT DIFFICULT FELLIS Y12 (AI) (P)
 ELITE REGINA Y12 B197 (AI) (P)
 ELITE REGINA N89 U53 (AI) (P)

KOANUI ROCKET 0219 (IMP NZL) (P)
 PEAKES BENTLEY B166 (AI) (ET) (P)
 WONDAI FANCY S15 (AI) (P)
DAM: COURALLIE B166 PRUDENCE E251 (AI) (P)
 ONSLOW SHARKA V003 (H)
 COURALLIE V003 PRUDENCE Y302 (H)
 COURALLIE PRUDENCE P402 ET6 (AI) (ET) (H)

MAY 2018 HEREFORD GROUP BREEDPLAN

CED	CEM	GL	BW	200d	400d	600d	Mcw	Milk	SS	CWT	EMA	Rib	Rump	RBV	IMF	SELECTION INDEXES			
+1.4	+4.8	-1.7	+4.9	+35	+58	+83	+63	+11	+2.2	+57	+4.5	+1.0	+1.4	+1.4	+0.8	SM	Grass	Grain	EU
45%	37%	74%	72%	65%	65%	64%	56%	49%	63%	55%	45%	48%	51%	47%	50%	+\$115	+\$113	+\$136	+\$130

Traits Observed: GL,BWT,200WT,400WT,FAT,EMA,IMF,Genomics

Notes: Purchased as a calf at Courallie Dispersal. Wallace excels in his carcass attributes. A volume bull, deep sided with great performance data. Ebvs rated top 10% supermarket, grain fed, EU indexes, top 15% EMA & RBV, top 20% Carcass weight, rump fat & IMF, top 25% rib fat & grass fed index.

Purchaser: \$

LOT 17

BOWEN MARKER M17 (AI) (P)

BWNM017

Eye Pigment: 100-100 Born: 28/06/2016 Age: 24.5 mths

PP,IEF,HYF,DLF,

Tattoo: M017

KCF BENNETT 3008 M326 (P)
 NJW 73S M326 TRUST 100W ET (IMP USA) (ET) (P)
 NJW P606 72N DAYDREAM 73S (P)
SIRE: NJW 78P TWENTYTWELVE 190Z (IMP AUS) (AI) (ET) (P)
 RU 20X BOULDER 57G (IMP CAN) (P)
 NJW BW LADYSPORT DEW 78P ET (P)
 SADDLE-VALLEY LADYSPORT 120J (P)

BOWEN ROXBOROUGH R266 (AI) (ET) (P)
 BOWEN URALBA U160 (P)
 ALLENDALE MARLINE L72 (P)
DAM: BOWEN ADVANCE A231 (P)
 MERRANLEE SUNDANCE S55 (AI) (P)
 BOWEN ADVANCE X206 (AI) (P)
 BOWEN ADVANCE R162 (P)

MAY 2018 HEREFORD GROUP BREEDPLAN

CED	CEM	GL	BW	200d	400d	600d	Mcw	Milk	SS	CWT	EMA	Rib	Rump	RBV	IMF	SELECTION INDEXES			
-4.6	+1.8	+2.0	+5.8	+34	+62	+89	+76	+20	+2.7	+53	+5.1	+1.3	+1.7	+0.2	+0.6	SM	Grass	Grain	EU
45%	34%	72%	73%	68%	67%	66%	58%	46%	59%	55%	49%	52%	56%	50%	50%	+\$94	+\$89	+\$105	+\$100

Traits Observed: GL,CE,BWT,200WT,400WT,FAT,EMA,IMF,Genomics

Notes: Fantastic carcass from this Twenty twelve son, he will pack plenty of weight into his progeny. Marker M17 has substantial weight and growth performance. Dam A231 has been a great cow for us. Ebvs rated top 10% EMA, rib & rump fats, top 15% milk & scrotal, top 20% 400 & 600 day weight, top 25% IMF.

Purchaser: \$

LOT 18

BOWEN MATTY M10 (P)

BWNM010

Eye Pigment: 100-100 Born: 22/06/2016 Age: 25.0 mths

PP,IEF,HYF,DLF,

Tattoo: M010

CAPETHORNE HOT SHOT 03 22 (P)
 MATARIKI HOLY - SMOKE (IMP NZL) (P)
 MATARIKI GIRLIE 00323 (P)
SIRE: BOWEN JAMESTOWN J44 (AI) (ET) (S)
 BOWEN LIDDELL Z128 (AI) (P)
 BOWEN FLORRIE C91 (P)
 BOWEN FLORRIE Y10 (P)
 BRAXTON GIANT THUNDER S138 (IMP NZL) (P)
 BOWEN TORNADO Z260 (AI) (ET) (P)
 BOWEN TRICEL P180 (P)
DAM: BOWEN MARLINE E109 (P)
 VALMA SOUTHERN STAR (AI) (ET) (P)
 BOWEN MARLINE X130 (P)
 ALLENDALE MARLINE L72 (P)



MAY 2018 HEREFORD GROUP BREEDPLAN

CED	CEM	GL	BW	200d	400d	600d	Mcw	Milk	SS	CWT	EMA	Rib	Rump	RBV	IMF	SELECTION INDEXES			
-6.9	-2.0	+0.5	+6.6	+38	+61	+88	+89	+15	+1.9	+52	+2.7	-0.4	-0.8	+0.7	+0.5	SM	Grass	Grain	EU
43%	38%	55%	71%	65%	65%	64%	58%	47%	56%	54%	49%	54%	57%	52%	51%	+\$76	+\$69	+\$83	+\$86

Traits Observed: CE,BWT,200WT,400WT,FAT,EMA,IMF,Genomics

Notes: Terrific length, smooth fronted with soft easy doing qualities. He will breed consistently with the renowned Marline, Tricel & Florrie cow families represented in his pedigree. His Dam Marline E109 has bred well with many daughters retained in the stud. Ebvs rated top 10% mature cow weight, top 15% 200day weight, top 20% 400,600day weights, good IMF & milk.

Purchaser: \$

LOT 19

BOWEN MONTIE M12 (S)

BWNM012

Eye Pigment: 100-100 Born: 21/06/2016 Age: 25.0 mths

HP,IEF,HYF,DLF,

Tattoo: M012

CAPETHORNE HOT SHOT 03 22 (P)
 MATARIKI HOLY - SMOKE (IMP NZL) (P)
 MATARIKI GIRLIE 00323 (P)
SIRE: BOWEN JAMESTOWN J44 (AI) (ET) (S)
 BOWEN LIDDELL Z128 (AI) (P)
 BOWEN FLORRIE C91 (P)
 BOWEN FLORRIE Y10 (P)

TYCOLAH ZORRO (P)
 BOWEN CAULFIELD C264 (AI) (ET) (P)
 WIRANYA RHODA Q25 (AI) (P)
DAM: BOWEN GLEAM H157 (P)
 BOWEN LEGION Z190 (P)
 PEAKES GLEAM D76 (P)
 PEAKES GLEAM Z192 (P)

MAY 2018 HEREFORD GROUP BREEDPLAN

CED	CEM	GL	BW	200d	400d	600d	Mcw	Milk	SS	CWT	EMA	Rib	Rump	RBV	IMF	SELECTION INDEXES			
-9.2	-5.8	-0.1	+8.0	+42	+70	+99	+108	+13	+1.9	+57	+2.3	-0.3	-0.4	+0.2	+0.4	SM	Grass	Grain	EU
38%	32%	50%	70%	63%	64%	62%	57%	42%	52%	51%	46%	51%	55%	48%	48%	+\$74	+\$64	+\$75	+\$81

Traits Observed: CE,BWT,200WT,400WT,FAT,EMA,IMF,Genomics

Notes: Deep bodied, soft skinned with the strong sires outlook typical of the Jamestown progeny. High weight gain with positive marbling attributes. Ebvs rated top 1% mature cow weight, top 5% 200 to 600 day weights, top 20% carcass weight.

Purchaser: \$

LOT 20

BOWEN MARINE M247 (P)

BWNM247

Eye Pigment: 100-100 Born: 14/08/2016 Age: 23.0 mths

HP,IEF,HYF,DLF,

Tattoo: M247

KOANUI ROCKET 0219 (IMP NZL) (P)
 PINE HILL CROSSFIRE C558 (AI) (P)
 PINE HILL GHOST MAPLE W16 (AI) (P)
SIRE: YAVENVALE JET FIRE J032 (P)
 KURRAJONG PARK B144 (P)
 YAVENVALE EMPRESS G320 (P)
 YAVENVALE EMPRESS C340 (H#)

ALLENDALE NATIONAL W168 (P)
 BOWEN DIAMANTINA D203 (AI) (P)
 BOWEN MATCHLESS Z152 (AI) (P)
DAM: BOWEN URSULA H220 (P)
 BRAXTON GIANT 1 (IMP NZ) (IMP NZL) (P)
 PEAKES URSULA Z286 (AI) (P)
 KAYNE URSULA W7 (P)



SIRE: YAVENVALE JET FIRE J032 (P)

MAY 2018 HEREFORD GROUP BREEDPLAN

CED	CEM	GL	BW	200d	400d	600d	Mcw	Milk	SS	CWT	EMA	Rib	Rump	RBV	IMF	SELECTION INDEXES			
-7.0	-3.5	-2.6	+7.5	+46	+72	+102	+90	+18	+3.2	+59	+3.0	+0.3	+0.2	+1.2	+0.4	SM	Grass	Grain	EU
47%	36%	63%	73%	67%	68%	66%	59%	44%	59%	55%	50%	54%	58%	52%	53%	+\$99	+\$91	+\$107	+\$109

Traits Observed: CE,BWT,200WT,400WT,FAT,EMA,IMF,Genomics

Notes: Here is a real front paddock sire, soft slick skin with standout style. Short gestation with excellent growth data. Ebvs rated within the breed top 1% 200 day weight, top 5% 400,600day weights & scrotal, top 10% gestation length & mature cow weight, top 15% carcass weight, top 25% milk, RBV , supermarket & EU indexes, good IMF & positive fats.

Purchaser: \$

LOT 21

BOWEN MARTYN M63 (P)

BWNM063

Eye Pigment: 100-100 Born: 28/08/2016 Age: 22.5 mths

PP,IEF,HYF,DLF,

Tattoo: M063

ALLENDALE WATERHOUSE D1 (P)
 DAYS CALIBRE G74 (P)
 ALLENDALE DAWN C62 (AI) (P)
SIRE: BOWEN KYOOMA K27 (P)
 BOWEN ARGYLE A355 (AI) (S)
 BOWEN KATIE D236 (P)
 BOWEN KATIE A336 (P)

BOWEN ARGYLE A355 (AI) (S)
 BOWEN CROWN PRINCE C330 (AI) (P)
 BOWEN PRINCESS T65 (P)
DAM: BOWEN ADVANCE G96 (P)
 BOWEN VINCENT V1 (S)
 PEAKES ADVANCE A343 (AI) (P)
 KAYNE ADVANCE W41 (AI) (P)



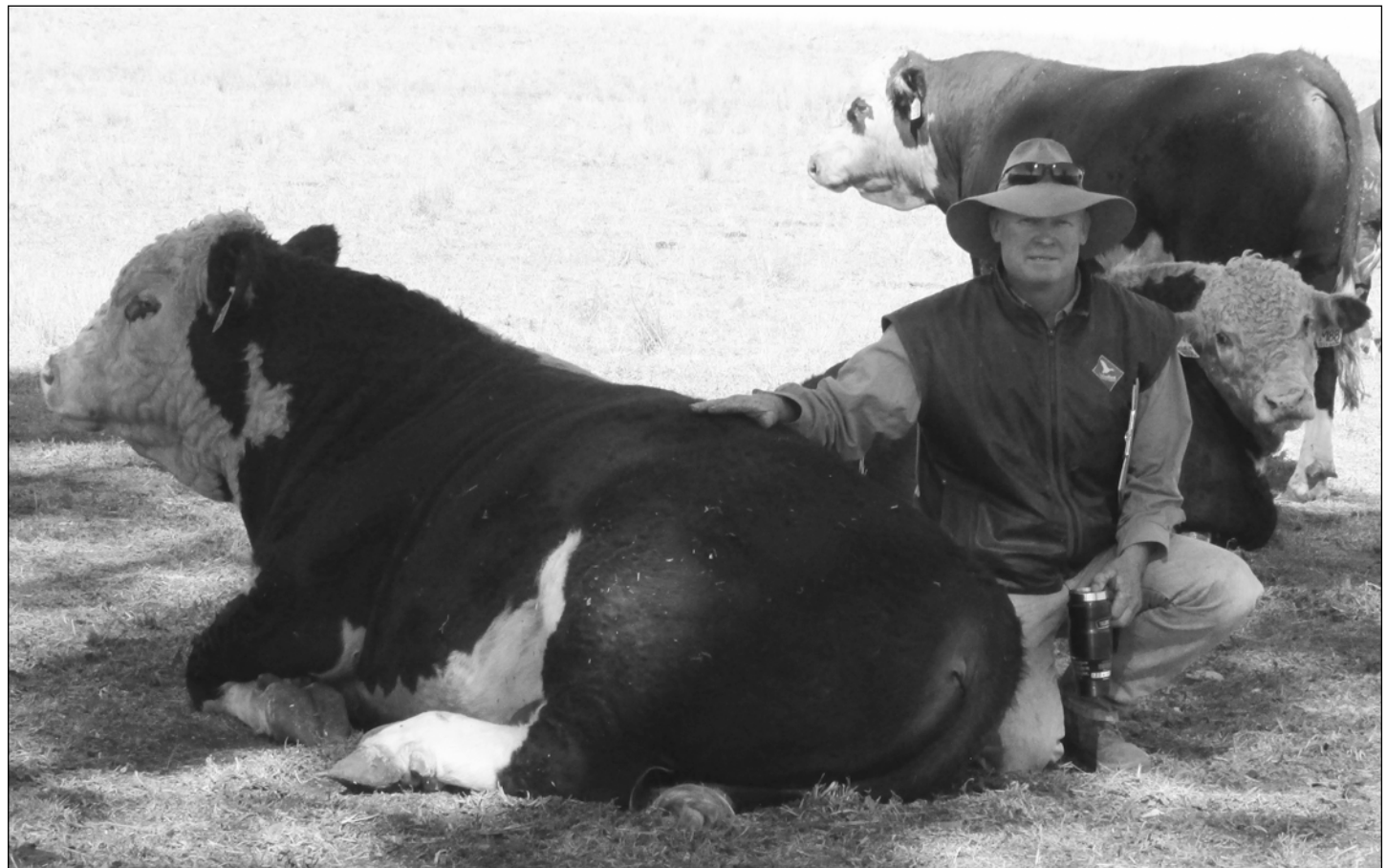
MAY 2018 HEREFORD GROUP BREEDPLAN

CE	CM	GL	BW	200d	400d	600d	Mcw	Milk	SS	CWT	EMA	Rib	Rump	RBV	IMF	SELECTION INDEXES			
-4.0	+1.6	+0.1	+7.0	+40	+65	+95	+101	+9	+1.8	+57	+4.6	-0.2	-0.1	+1.0	+0.7	SM	Grass	Grain	EU
42%	34%	52%	72%	67%	66%	65%	58%	45%	56%	54%	47%	52%	56%	50%	49%	+\$93	+\$87	+\$103	+\$105

Traits Observed: CE,BWT,200WT,400WT,FAT,EMA,IMF,Genomics

Notes: This year is the first of the Kyooma K27 progeny (1/2 share sold to the Melville park stud \$35,000) We believe Kyooma will be a prolific sire over the next few years. His consistency of progeny is outstanding. Martyn is bred from a powerful cow family, he has soundness & structure with excellent performance data. Evs rated top 5% mature cow weight, top 10% 200 to 600day weights, top 15% EMA, top 20% carcass weight & IMF.

Purchaser: \$



LOT 22

BOWEN MISSISSIPPI M266 (AI) (P)

BWNM266

Eye Pigment: 100-100 Born: 24/06/2016 Age: 25.0 mths

HP,IEF,HYF,DLF,

Tattoo: M266

KOANUI ROCKET 0219 (IMP NZL) (P)
 PINE HILL CROSSFIRE C558 (AI) (P)
 PINE HILL GHOST MAPLE W16 (AI) (P)

SIRE: YAVENVALE JET FIRE J032 (P)

KURRAJONG PARK B144 (P)
 YAVENVALE EMPRESS G320 (P)
 YAVENVALE EMPRESS C340 (H#)

BRAYBOOK CHEROKEE C200 (AI) (P)
 BOWEN FRONTIER F314 (P)
 BOWEN HILDA W188 (P)

DAM: BOWEN DELICIOUS J242 (P)

LOMA LANGI VERSACE (P)
 BOWEN DELICIOUS Z305 (P)
 BOWEN DELICIOUS W140 (P)

MAY 2018 HEREFORD GROUP BREEDPLAN

CED	CEM	GL	BW	200d	400d	600d	Mcw	Milk	SS	CWT	EMA	Rib	Rump	RBV	IMF	SELECTION INDEXES			
-1.5	+2.6	-0.9	+5.4	+33	+50	+71	+66	+16	+1.8	+39	+2.5	-0.3	-0.5	+1.6	-0.3	SM	Grass	Grain	EU
43%	30%	72%	72%	66%	66%	65%	57%	40%	57%	54%	48%	52%	57%	50%	51%	+\$72	+\$67	+\$68	+\$81

Traits Observed: GL,CE,BWT,200WT,400WT,FAT,EMA,IMF,Genomics

Notes: Stylish son of Jet Fire, has sire appeal with great skin & pigment. Retail beef yield rated top 10% & good milk ebvs.

Purchaser: \$

LOT 23

BOWEN MARINO M52 (P)

BWNM052

Eye Pigment: 100-100 Born: 14/08/2016 Age: 23.0 mths

PP,IEF,HYF,DLF,

Tattoo: M052

KOANUI ROCKET 0219 (IMP NZL) (P)
 BOWEN ESPLANADE E332 (AI) (P)
 BOWEN ROLLINA B347 (P)

SIRE: BOWEN ESPLANADE K167 (AI) (P)

DEBARRY SCHOONER (S)
 BOWEN HILDA G108 (P)
 BOWEN HILDA C155 (AI) (P)

BOWEN VINCENT V1 (S)
 DEBARRY SCHOONER (S)
 DIMBY SONIA 32 (P)

DAM: BOWEN ROLLINA G291 (P)

BOWEN TORNADO Z260 (AI) (ET) (P)
 BOWEN ROLLINA C86 (AI) (P)
 BOWEN ROLLINA W237 (P)

MAY 2018 HEREFORD GROUP BREEDPLAN

CED	CEM	GL	BW	200d	400d	600d	Mcw	Milk	SS	CWT	EMA	Rib	Rump	RBV	IMF	SELECTION INDEXES			
+1.7	+3.9	+0.4	+5.8	+43	+68	+98	+81	+16	+3.6	+62	+3.4	-0.2	-0.7	+1.5	+0.2	SM	Grass	Grain	EU
38%	32%	56%	71%	65%	65%	64%	58%	43%	57%	53%	47%	52%	56%	50%	49%	+\$111	+\$105	+\$119	+\$123

Traits Observed: CE,BWT,200WT,400WT,FAT,EMA,IMF,Genomics

Notes: Marino possesses a great high yielding carcass, he is a strong sound bull with magnificent weight for age. Maternal Brother sold in the 2017 Bowen Bull sale. Ebvs rated within the breed top 5% 200, 600day weights & scrotal, top 10% 400 day weight & carcass weight, top 15% RBV, supermarket, grass fed & EU indexes, top 20% mature cow weight & grain fed index, good EMA & milk.

Purchaser: \$



LOT 34 & LOT 13

LOT 24

BOWEN MOVIE MAKER M15 (P)

BWNM015

Eye Pigment: 80-100 Born: 31/07/2016 Age: 23.5 mths

PP,IEF,HYF,DLF,

Tattoo: M015

FELTONS SOUNDER 957 (P)
 EFBEEF FOREMOST U208 (IMP USA) (P)
 EFBEEF G824 KATE S610 ET (P)
SIRE: BOWEN COORS LIGHT J53 (AI) (ET) (P)
 BOWEN URALBA U160 (P)
 BOWEN ROLLINA B385 (P)
 BOWEN ROLLINA Y73 (P)

KENYA KIDMAN (P)
 BOWEN ARGYLE A355 (AI) (S)
 BOWEN VIRTUE S307 (P)
DAM: BOWEN MATCHLESS D30 (P)
 HILLS-GALORE CINCH 20E (IMP CAN) (P)
 BOWEN MATCHLESS A211 (AI) (ET) (P)
 BOWEN MATCHLESS P288 (P)

MAY 2018 HEREFORD GROUP BREEDPLAN

CED	CEM	GL	BW	200d	400d	600d	Mcw	Milk	SS	CWT	EMA	Rib	Rump	RBV	IMF	SELECTION INDEXES			
+0.1	+0.7	-2.4	+4.6	+38	+60	+82	+83	+11	+2.1	+53	+3.0	-0.2	-1.0	+1.4	+0.1	SM	Grass	Grain	EU
38%	30%	54%	71%	65%	65%	64%	57%	45%	56%	52%	46%	51%	55%	48%	48%	+\$85	+\$79	+\$86	+\$96

Traits Observed: CE,BWT,200WT,400WT,FAT,EMA,IMF,Genomics

Notes: Oozes softness & doing ability with a pedigree of repetitive type. Moderate Birth Weight. Ebvs rate top 10% gestation length, top 15% 200 day weight & RBV, top 20% mature cow weight & top 25% 400 day weight.

Purchaser: \$

LOT 25

BOWEN MERRIT M145 (P)

BWNM145

Eye Pigment: 100-100 Born: 27/07/2016 Age: 23.5 mths

PP,IEF,HYF,DLF,

Tattoo: M145

DXB 7C BLOCKBUSTER 3K (IMP CAN) (P)
 BBSF 3K RANCHMAN 18R (IMP CAN) (P)
 BBSF 610F CINDY 86L (P)
SIRE: BOWEN COWBOY C245 (AI) (ET) (P)
 VALMA SOUTHERN STAR (AI) (ET) (P)
 BOWEN ROLLINA N61 (P)
 BOWEN ROLLINA D23 (AI) (P)

ALLENDALE KENWORTH 2 (P)
 ALLENDALE OCTAGONAL (AI) (P)
 ALLENDALE MARLINE R71 (P)
DAM: BOWEN HILDA C323 (P)
 BOWEN QUEBEC Q6 (AI) (P)
 BOWEN HILDA X158 (P)
 BOWEN HILDA U192 (AI) (P)



MAY 2018 HEREFORD GROUP BREEDPLAN

CED	CEM	GL	BW	200d	400d	600d	Mcw	Milk	SS	CWT	EMA	Rib	Rump	RBV	IMF	SELECTION INDEXES			
-0.5	+1.7	-3.6	+4.1	+32	+45	+61	+49	+15	+1.4	+37	+3.0	+1.7	+2.7	-0.6	+0.7	SM	Grass	Grain	EU
50%	41%	60%	74%	69%	69%	67%	61%	59%	61%	58%	52%	55%	59%	54%	55%	+\$75	+\$74	+\$86	+\$81

Traits Observed: CE,BWT,200WT,400WT,FAT,EMA,IMF,Genomics

Notes: Excellent length & carcass attributes, excels in easy doing characteristics, soft terrific depth of flank. Moderate birth weight & positive fats. Ebvs rated top 5% gestation length, rib & rump fat, top 20% IMF. Maternal brother sold in 2012 Bowen Bull Sale. The Cowboy carcass results have marble scored up to 4 with great overall consistency.

Purchaser: \$

LOT 26

BOWEN MCARTHUR M210 (P)

BWNM210

Eye Pigment: 100-100 Born: 7/08/2016 Age: 23.5 mths

PP,IEF,HYF,DLF,

Tattoo: M210

ALLENDALE TIPPERARY D13 (AI) (ET) (P)
 DAYS WIZARD F84 (P)
 ALLENDALE DAWN Z21 (AI) (P)
SIRE: THE RANCH TIPPERARY J06 (AI) (P)
 KIDMAN TAIT C194 (P)
 THE RANCH SUSAN F02 (P)
 THE RANCH SUSAN C82 (P)

RLOA R271 DYNASTY ET37U (IMP CAN) (P)
 JSF 37 271 DEVO 23C (IMP CAN) (P)
 JSF 183 VICTORIA 7A (IMP CAN) (P)
DAM: BOWEN RUTH Z324 (AI) (P)
 KENYA BEACON 2 (P)
 BOWEN RUTH M17 (AI) (P)
 BOWEN RUTH H18 (AI) (P)



MAY 2018 HEREFORD GROUP BREEDPLAN

CED	CEM	GL	BW	200d	400d	600d	Mcw	Milk	SS	CWT	EMA	Rib	Rump	RBV	IMF	SELECTION INDEXES			
+3.1	+1.0	+0.3	+2.4	+29	+49	+66	+52	+18	+1.7	+46	+2.1	+1.2	+2.1	-0.4	+0.4	SM	Grass	Grain	EU
43%	33%	52%	73%	67%	66%	64%	56%	46%	56%	54%	48%	52%	56%	49%	48%	+\$80	+\$78	+\$84	+\$83

Traits Observed: CE,BWT,200WT,400WT,FAT,EMA,IMF,Genomics

Notes: Low birth weight sire, suitable for heifers. Has great structure, length & pigment. Dam has been a consistent breeder till 14 years of age producing excellent progeny, five sons sold in previous Bowen Bull sales to average \$8000. Ebvs rated within the breed top 10% rump fat, top 15% rib fat, top 20% birth weight & top 25% milk.

Purchaser: \$

LOT 27

BOWEN MEXICO M289 (P)

BWNM289

Eye Pigment: 100-100 Born: 17/08/2016 Age: 23.0 mths

PP,IEF,HYF,DLF,

Tattoo: M289

KOANUI ROCKET 0219 (IMP NZL) (P)
 PINE HILL CROSSFIRE C558 (AI) (P)
 PINE HILL GHOST MAPLE W16 (AI) (P)
SIRE: YAVENVALE JET FIRE J032 (P)
 KURRAJONG PARK B144 (P)
 YAVENVALE EMPRESS G320 (P)
 YAVENVALE EMPRESS C340 (H#)

KENYA KIDMAN (P)
 BOWEN ARGYLE A355 (AI) (S)
 BOWEN VIRTUE S307 (P)
DAM: BOWEN MATCHLESS G194 (AI) (ET) (P)
 BOWEN TORNADO Z260 (AI) (ET) (P)
 RILO PARK MATCHLESS C10 (AI) (ET) (P)
 BOWEN MATCHLESS L140 (AI) (P)

MAY 2018 HEREFORD GROUP BREEDPLAN

CED	CEM	GL	BW	200d	400d	600d	Mcw	Milk	SS	CWT	EMA	Rib	Rump	RBV	IMF	SELECTION INDEXES			
-2.1	+0.3	-0.2	+3.5	+31	+53	+68	+52	+14	+1.6	+44	+2.9	-0.3	-0.6	+1.4	+0.6	SM	Grass	Grain	EU
47%	35%	60%	72%	67%	67%	65%	59%	43%	59%	54%	49%	52%	56%	50%	51%	+\$80	+\$78	+\$96	+\$93

Traits Observed: CE,BWT,200WT,400WT,FAT,EMA,IMF,Genomics

Notes: Mexico is typical of his sire. Long, smooth soft easy doing with big testicles. Suitable for heifers low birth weight, ebvs rated top 15% RBV & top 25% IMF.

Purchaser: \$

LOT 28

BOWEN MR MINT M124 (AI) (P)

BWNM124

Eye Pigment: 100-100 Born: 1/08/2016 Age: 23.5 mths

PP,IEF,HYF,DLF,

Tattoo: M124

FELTONS DOMINO 774 (P)
 FELTONS LEGEND 242 (IMP USA) (P)
 FELTONS G15 (P)
SIRE: MSU TCF REVOLUTION 4R (IMP USA) (P)
 REMITALL ONLINE 122L (IMP CAN) (P)
 MSU TCF RACHAEL ET 54N (P)
 HH MISS ADV 786G 1ET (H)

MOUNTAIN VALLEY ROCKYNED B1 (P)
 CASCADE EL DORADO E27 (P)
 CASCADE IRISH MAID A37 (AI) (P)
DAM: BOWEN ROLLINA H48 (AI) (P)
 DEBARRY HIGHLANDER 2 (AI) (S)
 BOWEN ROLLINA B347 (P)
 BOWEN ROLLINA X322 (P)



MAY 2018 HEREFORD GROUP BREEDPLAN

CED	CEM	GL	BW	200d	400d	600d	Mcw	Milk	SS	CWT	EMA	Rib	Rump	RBV	IMF	SELECTION INDEXES			
+2.9	+1.1	-0.8	+4.0	+37	+60	+82	+70	+15	+2.2	+58	+6.4	+0.8	+0.6	+1.1	+0.9	SM	Grass	Grain	EU
50%	39%	76%	73%	69%	69%	67%	63%	56%	62%	59%	55%	57%	60%	54%	56%	+\$106	+\$104	+\$124	+\$119

Traits Observed: GL,CE,BWT,200WT,400WT,FAT,EMA,IMF,Genomics

Notes: Mr Mint will produce early maturing weaners with excellent carcass & weight for age. An attractive outcross sire with outstanding set of data, sired by highly popular USA sire Revolution 4R. EBVs rated top 1% EMA, top 15% IMF & all indexes, top 20% 200 day weight & top 25% 400 day weight.

Purchaser: \$

LOT 29

BOWEN MENAI M186 (AI) (ET) (P)

BWNM186

Eye Pigment: 100-100 Born: 11/09/2016 Age: 22.5 mths

HP,IEF,HYF,DLF,

Tattoo: M186

FELTONS LEGEND 242 (IMP USA) (P)
 MSU TCF REVOLUTION 4R (IMP USA) (P)
 MSU TCF RACHAEL ET 54N (P)
SIRE: KCF BENNETT REVOLUTION X51 (IMP USA) (P)
 EFBEEF SCHU-LAR PROFICIENT N093 (IMP USA) (P)
 KCF MISS PROFICIENT U201 (P)
 KCF MISS 774 L82 (P)

BOWEN VINCENT V1 (S)
 DEBARRY EDEN (P)
 DEBARRY PURITY V50 (AI) (ET) (P)
DAM: BOWEN RUTH E321 (AI) (P)
 TYCOLAH ZORRO (P)
 BOWEN RUTH B31 (AI) (P)
 BOWEN RUTH V207 (AI) (P)



MAY 2018 HEREFORD GROUP BREEDPLAN

CED	CEM	GL	BW	200d	400d	600d	Mcw	Milk	SS	CWT	EMA	Rib	Rump	RBV	IMF	SELECTION INDEXES			
+6.6	+4.0	+0.7	+3.4	+39	+63	+86	+53	+19	+1.6	+67	+7.7	+1.8	+2.1	+1.0	+1.4	SM	Grass	Grain	EU
45%	35%	65%	70%	66%	65%	64%	55%	53%	62%	54%	46%	49%	51%	45%	50%	+\$134	+\$134	+\$166	+\$148

Traits Observed: BWT,200WT,400WT,FAT,EMA,IMF,Genomics

Notes: Deep soft quality Revolution X51 son, an easy doing bull with outstanding performance data. Dam Ruth E321 is in our Donor program. We have retained many daughters her sons have sold to a top of \$10,000 in previous Bowen Bull sales. All indexes in the top 5% of breed or better, rated top 1% EMA, top 5% carcass weight, rib fat & IMF, top 10% rump fat, top 15% 200 & 400 day weights, top 20% milk, top 25% 600 day weight.

Purchaser: \$

LOT 30

BOWEN MADRID M258 (AI) (S)

BWNM258

Eye Pigment: 100-100 Born: 29/07/2016 Age: 23.5 mths

HP,IEF,HYF,DLF,

Tattoo: M258

FELTONS DOMINO 774 (P)
 FELTONS LEGEND 242 (IMP USA) (P)
 FELTONS G15 (P)
SIRE: MSU TCF REVOLUTION 4R (IMP USA) (P)
 REMITALL ONLINE 122L (IMP CAN) (P)
 MSU TCF RACHAEL ET 54N (P)
 HH MISS ADV 786G 1ET (H)

MOUNTAIN VALLEY ROCKYNED B1 (P)
 CASCADE EL DORADO E27 (P)
 CASCADE IRISH MAID A37 (AI) (P)
DAM: BOWEN ROLLINA H22 (AI) (S)
 SMITHSTON WEE DRAM ET1 (AI) (ET) (H)
 BOWEN ROLLINA Z132 (AI) (P)
 BOWEN ROLLINA P197 (P)



MAY 2018 HEREFORD GROUP BREEDPLAN

CED	CEM	GL	BW	200d	400d	600d	Mcw	Milk	SS	CWT	EMA	Rib	Rump	RBV	IMF	SELECTION INDEXES			
+2.8	-2.6	-1.8	+3.6	+36	+54	+75	+68	+16	+2.2	+51	+5.2	+0.8	+0.6	+0.9	+0.8	SM	Grass	Grain	EU
50%	39%	76%	73%	69%	69%	67%	61%	56%	61%	58%	54%	56%	60%	53%	55%	+\$94	+\$92	+\$108	+\$106

Traits Observed: GL,CE,BWT,200WT,400WT,FAT,EMA,IMF,Genomics

Notes: A very attractive bull with an out cross pedigree by the popular performance sire revolution 4R. We saw some terrific carcass stock & sound productive cows by 4R in USA. Outstanding performance data in this fellow. Maternal brother sold in the 2017 Bowen bull sale \$12,000. Low birth weight good positive fats & milk. Ebvs rated 15% gestation length & top 20% IMF.

Purchaser: \$

LOT 31

BOWEN MERLIN M141 (P)

BWNM141

Eye Pigment: 100-100 Born: 7/08/2016 Age: 23.5 mths

PP,DLF,IEF,HYF,

Tattoo: M141

ALLENDALE WATERHOUSE D1 (P)
 DAYS CALIBRE G74 (P)
 ALLENDALE DAWN C62 (AI) (P)
SIRE: BOWEN KYOOMA K27 (P)
 BOWEN ARGYLE A355 (AI) (S)
 BOWEN KATIE D236 (P)
 BOWEN KATIE A336 (P)

BOWEN ROXBOROUGH R266 (AI) (ET) (P)
 BOWEN URALBA U160 (P)
 ALLENDALE MARLINE L72 (P)
DAM: BOWEN ROLLINA A34 (P)
 KENYA MAJOR (P)
 BOWEN ROLLINA X70 (P)
 BOWEN ROLLINA S144 (P)



MAY 2018 HEREFORD GROUP BREEDPLAN

CED	CEM	GL	BW	200d	400d	600d	Mcw	Milk	SS	CWT	EMA	Rib	Rump	RBV	IMF	SELECTION INDEXES			
+2.0	+4.4	-2.8	+3.0	+32	+51	+71	+80	+10	+1.5	+49	+4.0	+0.3	+0.9	+0.4	+1.5	SM	Grass	Grain	EU
43%	35%	51%	73%	67%	66%	64%	57%	49%	55%	54%	47%	52%	56%	50%	49%	+\$93	+\$91	+\$114	+\$105

Traits Observed: CE,BWT,200WT,400WT,FAT,EMA,IMF,Genomics

Notes: Merlin ticks all the box's, will produce quality progeny. A very safe sound sire with impeccable performance data low birth weight with high growth & great carcass data. Ebvs rated top 5% IMF, top 10% gestation length & top 25% birth weight, mature cow weight & EMA. Maternal brother sold in 2012 Bowen Bull Sale.

Purchaser: \$

LOT 32

BOWEN MONTE CARLO M267 (AI) (P)

BWNM267

Eye Pigment: 100-100 Born: 3/08/2016 Age: 23.5 mths

PP,IEF,HYF,DLF,

Tattoo: M267

ALLENDALE NATIONAL W168 (P)
 BOWEN DIAMANTINA D203 (AI) (P)
 BOWEN MATCHLESS Z152 (AI) (P)
SIRE: BOWEN DIAMANTINA J209 (P)
 BOWEN TORNADO Z260 (AI) (ET) (P)
 PEAKES IRISH MAID E317 (P)
 CAS IRISH MAID T209 (P)

HARVIE RAFTSMAN 16R (IMP CAN) (P)
 MAUNGAHINA KINGDOM BAY 070073 (IMP NZL) (P)
 MAUNGAHINA MODESTY T264 (P)
DAM: BOWEN FANCY H269 (AI) (ET) (P)
 KENYA KIDMAN (P)
 BOWEN FANCY X57 (AI) (P)
 BOWEN FANCY U2791 (AI) (P)

MAY 2018 HEREFORD GROUP BREEDPLAN

CED	CEM	GL	BW	200d	400d	600d	Mcw	Milk	SS	CWT	EMA	Rib	Rump	RBV	IMF	SELECTION INDEXES			
-5.2	-6.5	+0.4	+5.1	+39	+64	+87	+72	+7	+1.2	+62	+4.0	+1.2	+1.6	+0.4	+1.1	SM	Grass	Grain	EU
38%	32%	71%	70%	64%	64%	62%	55%	42%	57%	52%	47%	49%	54%	48%	47%	+\$89	+\$85	+\$106	+\$96

Traits Observed: GL,CE,BWT,200WT,400WT,FAT,EMA,IMF,Genomics

Notes: Moderate framed very high yielding bull with that extra volume. The top Fancy, Irish Maid & Matchless cow families a feature in his pedigree. Ebvs rated within the breed rated top 10% carcass weight & IMF, top 15% 200, 400day weights, IMF & rib & rump fats, top 20% 600 day weight & top 25% EMA.

Purchaser: \$.....

LOT 33

BOWEN MAESTRO M231 (AI) (P)

BWNM231

Eye Pigment: 100-100 Born: 28/07/2016 Age: 23.5 mths

PP,IEF,HYF,DLF,

Tattoo: M231

ALLENDALE NATIONAL W168 (P)
 BOWEN DIAMANTINA D203 (AI) (P)
 BOWEN MATCHLESS Z152 (AI) (P)
SIRE: BOWEN DIAMANTINA J209 (P)
 BOWEN TORNADO Z260 (AI) (ET) (P)
 PEAKES IRISH MAID E317 (P)
 CAS IRISH MAID T209 (P)

ALLENDALE NATIONAL W168 (P)
 DUNOON DIAMANTINA D651 (AI) (S)
 DUNOON FIRST DAY Y200 (H)
DAM: BOWEN PRUNELLA H162 (P)
 AMOR YANAC 2 (ET) (P)
 PEAKES PRUNELLA C203 (P)
 CAS PRUNELLA X299 (P)

MAY 2018 HEREFORD GROUP BREEDPLAN

CED	CEM	GL	BW	200d	400d	600d	Mcw	Milk	SS	CWT	EMA	Rib	Rump	RBV	IMF	SELECTION INDEXES			
+0.5	-3.9	-2.3	+5.1	+35	+61	+89	+85	+11	+2.4	+55	+3.1	+1.0	+0.9	+0.2	+1.0	SM	Grass	Grain	EU
37%	31%	71%	70%	64%	65%	63%	56%	42%	57%	53%	48%	51%	55%	49%	48%	+\$100	+\$96	+\$118	+\$112

Traits Observed: GL,CE,BWT,200WT,400WT,FAT,EMA,IMF,Genomics

Notes: High yielding sire with exceptional hind quarter & carcass and has high marbling data. Maestro will put that extra punch into his progeny. Top female lines in this fellow's pedigree. Maternal brother sold in 2017 Bowen bull sale \$15,000. Ebvs rated in the top 10% gestation length & IMF, top 15% mature cow weight, top 20% 400, 600day weights, scrotal & rib fat, top 25% carcass weight & all indexes.

Purchaser: \$.....

LOT 34

BOWEN MOMENTOUS M271 (S)

BWNM271

Eye Pigment: 100-100 Born: 6/08/2016 Age: 23.5 mths

HP,IEF,HYF,DLF,

Tattoo: M271

ALLENDALE TIPPERARY D13 (AI) (ET) (P)
 DAYS WIZARD F84 (P)
 ALLENDALE DAWN Z21 (AI) (P)
SIRE: THE RANCH TIPPERARY J06 (AI) (P)
 KIDMAN TAIT C194 (P)
 THE RANCH SUSAN F02 (P)
 THE RANCH SUSAN C82 (P)

BOWEN VINCENT V1 (S)
 DEBARRY SCHOONER (S)
 DIMBY SONIA 32 (P)
DAM: BOWEN KAREN G145 (P)
 BOWEN URIARRA U96 (AI) (ET) (P)
 BOWEN KAREN Z321 (P)
 BOWEN KAREN R002 (P)

MAY 2018 HEREFORD GROUP BREEDPLAN

CED	CEM	GL	BW	200d	400d	600d	Mcw	Milk	SS	CWT	EMA	Rib	Rump	RBV	IMF	SELECTION INDEXES			
+3.1	+0.5	+2.2	+3.1	+27	+42	+63	+52	+18	+1.7	+39	+1.6	+1.1	+1.6	-0.2	+0.3	SM	Grass	Grain	EU
39%	29%	48%	72%	66%	66%	64%	57%	42%	53%	53%	47%	52%	56%	49%	49%	+\$75	+\$73	+\$79	+\$80

Traits Observed: CE,BWT,200WT,400WT,FAT,EMA,IMF,Genomics

Notes: A good quality plus son of the Tipperary sire, soft & smooth fronted. Suitable for heifers. Ebvs rated top 15% rib & rump fats, top 25% birth weight & milk.

Purchaser: \$.....

LOT 35

BOWEN MERCENARY M253 (P)

BWNM253

Eye Pigment: 100-100 Born: 9/08/2016 Age: 23.5 mths

PP,IEF,HYF,DLF,

Tattoo: M253

ALLENDALE TIPPERARY D13 (AI) (ET) (P)
 DAYS WIZARD F84 (P)
 ALLENDALE DAWN Z21 (AI) (P)
SIRE: THE RANCH TIPPERARY J06 (AI) (P)
 KIDMAN TAIT C194 (P)
 THE RANCH SUSAN F02 (P)
 THE RANCH SUSAN C82 (P)

ALLENDALE WATERHOUSE D1 (P)
 HUNTER LAKES FONZ F15 (AI) (P)
 BOWEN RUTH B59 (P)
DAM: BOWEN IRISH GIRL J156 (P)
 BOWEN ARGYLE A355 (AI) (S)
 PEAKES IRISH GIRL E30 (P)
 PEAKES IRISH GIRL A135 (AI) (P)

MAY 2018 HEREFORD GROUP BREEDPLAN

CED	CEM	GL	BW	200d	400d	600d	Mcw	Milk	SS	CWT	EMA	Rib	Rump	RBV	IMF	SELECTION INDEXES			
-2.8	-0.2	+0.3	+4.4	+34	+50	+71	+51	+15	+1.8	+45	+3.7	+2.1	+3.3	-0.4	+1.3	SM	Grass	Grain	EU
38%	27%	46%	71%	66%	65%	63%	55%	37%	53%	52%	45%	50%	55%	48%	48%	+\$88	+\$87	+\$110	+\$95

Traits Observed: CE,BWT,200WT,400WT,FAT,EMA,IMF,Genomics

Notes: Tipperary sires very moderate birth weight progeny, Mercenary possess this trait with very sound carcass data that will excel in marbling. Ebvs rated top 1% rib , rump fats & top 5% IMF with good milk.

Purchaser: \$

LOT 36

BOWEN MAXXIE M133 (P)

BWNM133

Eye Pigment: 100-100 Born: 1/08/2016 Age: 23.5 mths

PP,IEF,HYF,DLF,

Tattoo: M133

KOANUI ROCKET 0219 (IMP NZL) (P)
 BOWEN ESPLANADE E332 (AI) (P)
 BOWEN ROLLINA B347 (P)
SIRE: BOWEN ESPLANADE K167 (AI) (P)
 DEBARRY SCHOONER (S)
 BOWEN HILDA G108 (P)
 BOWEN HILDA C155 (AI) (P)

KENYA KIDMAN (P)
 BOWEN ARGYLE A355 (AI) (S)
 BOWEN VIRTUE S307 (P)
DAM: BOWEN MATCHLESS C177 (AI) (P)
 BOWEN VINCENT V1 (S)
 BOWEN MATCHLESS Z141 (AI) (P)
 BOWEN MATCHLESS V15 (AI) (P)

MAY 2018 HEREFORD GROUP BREEDPLAN

CED	CEM	GL	BW	200d	400d	600d	Mcw	Milk	SS	CWT	EMA	Rib	Rump	RBV	IMF	SELECTION INDEXES			
+1.6	+2.2	-1.0	+3.9	+35	+52	+73	+70	+12	+2.4	+47	+2.6	-0.6	-0.9	+1.4	+0.1	SM	Grass	Grain	EU
41%	33%	59%	72%	66%	65%	64%	58%	47%	55%	53%	47%	52%	56%	50%	49%	+\$83	+\$79	+\$86	+\$95

Traits Observed: CE,BWT,200WT,400WT,FAT,EMA,IMF,Genomics

Notes: Strong mobile son of Esplanade with a pedigree of soft easy doing cattle. Moderate birth weight, rated top 15% RBV & top 20% scrotal.

Purchaser: \$

LOT 37

BOWEN MICHAEL M27 (P)

BWNM027

Eye Pigment: 100-100 Born: 5/08/2016 Age: 23.5 mths

PP,IEF,HYF,DLF,

Tattoo: M027

FELTONS SOUNDER 957 (P)
 EFBEEF FOREMOST U208 (IMP USA) (P)
 EFBEEF G824 KATE S610 ET (P)
SIRE: BOWEN COORS LIGHT J53 (AI) (ET) (P)
 BOWEN URALBA U160 (P)
 BOWEN ROLLINA B385 (P)
 BOWEN ROLLINA Y73 (P)

BBSF 3K RANCHMAN 18R (IMP CAN) (P)
 BOWEN COWBOY C245 (AI) (ET) (P)
 BOWEN ROLLINA N61 (P)
DAM: BOWEN MINERVA J185 (P)
 BOWEN URIARRA X217 (P)
 BOWEN MINERVA E214 (AI) (P)
 BOWEN MINERVA Z212 (P)

MAY 2018 HEREFORD GROUP BREEDPLAN

CED	CEM	GL	BW	200d	400d	600d	Mcw	Milk	SS	CWT	EMA	Rib	Rump	RBV	IMF	SELECTION INDEXES			
+0.8	+3.5	-3.1	+5.1	+39	+57	+79	+73	+16	+3.1	+51	+2.6	+0.9	+0.8	+0.6	+0.0	SM	Grass	Grain	EU
37%	29%	54%	70%	63%	64%	63%	55%	41%	55%	52%	46%	51%	55%	48%	48%	+\$90	+\$86	+\$90	+\$99

Traits Observed: CE,BWT,200WT,400WT,FAT,EMA,IMF,Genomics

Notes: Exhibits excellent growth & weight for age, with short gestation & soft skin type. Ebvs rated to 5% gestation length & scrotal, top 15% 200 day weight, top 25% rib fat & good milk.

Purchaser: \$

LOT 38

BOWEN MORRISON M88 (P)

BWNM088

Eye Pigment: 100-100 Born: 6/08/2016 Age: 23.5 mths

PP,IEF,HYF,DLF,

Tattoo: M088

ALLENDALE TIPPERARY D13 (AI) (ET) (P)
 DAYS WIZARD F84 (P)
 ALLENDALE DAWN Z21 (AI) (P)
SIRE: THE RANCH TIPPERARY J06 (AI) (P)
 KIDMAN TAIT C194 (P)
 THE RANCH SUSAN F02 (P)
 THE RANCH SUSAN C82 (P)

KOANUI SAFETY 4353 (P)
 KOANUI SAFETY 8557 (IMP NZL) (P)
 KOANUI LYDIA 3108 (P)
DAM: BOWEN MAPLE J223 (AI) (P)
 BOWEN TORNADO Z260 (AI) (ET) (P)
 BOWEN MAPLE C51 (P)
 BOWEN MAPLE Y104 (P)



MAY 2018 HEREFORD GROUP BREEDPLAN

CED	CEM	GL	BW	200d	400d	600d	Mcw	Milk	SS	CWT	EMA	Rib	Rump	RBV	IMF	SELECTION INDEXES			
-1.6	-2.4	+0.5	+5.6	+34	+57	+80	+69	+18	+1.5	+46	+2.4	+1.1	+1.5	+0.2	+0.5	SM	Grass	Grain	EU
39%	30%	48%	65%	63%	63%	61%	53%	40%	54%	51%	39%	49%	53%	45%	49%	+\$80	+\$75	+\$86	+\$84

Traits Observed: CE,200WT,400WT,FAT,EMA,IMF,Genomics

Notes: Morrison is a typical son of Tipperary with high maternal attributes coming from Koanui Safety & the added carcass from the sire Tornado. Good IMF, rated top 15% rib & rump fats, top 25% milk.

Purchaser: \$

LOT 39

BOWEN MARSALA M248 (P)

BWNM248

Eye Pigment: 100-100 Born: 29/07/2016 Age: 23.5 mths

PP,IEF,HYF,DLF,

Tattoo: M248

ALLENDALE TIPPERARY D13 (AI) (ET) (P)
 DAYS WIZARD F84 (P)
 ALLENDALE DAWN Z21 (AI) (P)
SIRE: THE RANCH TIPPERARY J06 (AI) (P)
 KIDMAN TAIT C194 (P)
 THE RANCH SUSAN F02 (P)
 THE RANCH SUSAN C82 (P)

MM RSM STOCKMASTER 512 (IMP USA) (P)
 DEBARRY IMAGE (AI) (P)
 DEBARRY MODEL T88 (H)
DAM: BOWEN MAPLE E25 (P)
 BOWEN URALBA U160 (P)
 BOWEN MAPLE B93 (P)
 BOWEN MAPLE U226 (P)

MAY 2018 HEREFORD GROUP BREEDPLAN

CED	CEM	GL	BW	200d	400d	600d	Mcw	Milk	SS	CWT	EMA	Rib	Rump	RBV	IMF	SELECTION INDEXES			
+1.7	-1.5	+0.7	+4.9	+35	+58	+80	+71	+19	+2.2	+50	+3.3	-0.4	-0.8	+1.4	-0.1	SM	Grass	Grain	EU
40%	30%	46%	72%	66%	66%	64%	57%	43%	55%	53%	47%	52%	56%	50%	49%	+\$84	+\$79	+\$84	+\$93

Traits Observed: CE,BWT,200WT,400WT,FAT,EMA,IMF,Genomics

Notes: Marsala is a later maturing sire, soft, quality, free moving with great foot structure. He will grow into a tremendous sire, soft, quality, free moving with great foot structure. Pedigree exhibits proven consistent calving ease. Dam Maple E25 has had four sons in previous Bowen Bull sales selling to a top of \$12,000. Ebvs rated top 15% RBV & top 20% milk.

Purchaser: \$

LOT 40

BOWEN MARCUS M100 (SC)

UNREGISTERED

Eye Pigment: 100-100 Born: 7/08/2016 Age: 23.5 mths

Tattoo: UNREG

ALLENDALE TIPPERARY D13
 DAYS WIZARD F84
 ALLENDALE DAWN Z21
SIRE: THE RANCH TIPPERARY J06
 KIDMAN TAIT C194
 THE RANCH SUSAN F02
 THE RANCH SUSAN C82

ALLENDALE KENWORTH 2
 ALLENDALE OCTAGONAL
 ALLENDALE MARLINE R71
DAM: BOWEN VIRTUE B213
 ALLENDALE FEDERATION 3
 BOWEN VIRTUE X96
 BOWEN VIRTUE P15



MAY 2018 HEREFORD GROUP BREEDPLAN

CED	CEM	GL	BW	200d	400d	600d	Mcw	Milk	SS	CWT	EMA	Rib	Rump	RBV	IMF	SELECTION INDEXES			
-0.8	-1.1	+1.5	+4.1	+29	+49	+65	+51	+21	+2.0	+44	+2.9	+1.3	+1.9	0.0	+0.4	SM	Grass	Grain	EU
THESE ARE SIRE EBVS																+\$72	+\$69	+\$77	+\$76

Traits Observed: 200WT,400WT,600WT(x2),SS,FAT,EMA,IMF,Genomics

Notes: Marcus is a very sound, volume son of Tipperary his pedigree contains some breed legends. Maternal brother sold in the 2014 Bowen bull sale \$6000.

Purchaser: \$

LOT 41

BOWEN MARIOUS M54 (P)

BWNM054

Eye Pigment: 100-100 Born: 28/07/2016 Age: 23.5 mths

PP,IEF,HYF,DLF,

Tattoo: M054

ALLENDALE VAGABOND A74 (AI) (P)
 ALLENDALE WATERHOUSE D1 (P)
 ALLENDALE MARLINE X185 (P)
SIRE: DAYS CALIBRE G74 (P)
 ALLENDALE ROBIN HOOD Z239 (P)
 ALLENDALE DAWN C62 (AI) (P)
 ALLENDALE DAWN A150 (AI) (ET) (P)

MSU OPTIMUM Z03 (IMP USA) (P)
 HEATHERDALE OPIUM U78 (AI) (P)
 NEILPO MARITANA 29 (P)
DAM: BOWEN IRISH GIRL F129 (AI) (P)
 PEAKES STATESMAN Y28 (P)
 PEAKES IRISH GIRL C200 (AI) (P)
 PEAKES IRISH GIRL A122 (P)

MAY 2018 HEREFORD GROUP BREEDPLAN

CED	CEM	GL	BW	200d	400d	600d	Mcw	Milk	SS	CWT	EMA	Rib	Rump	RBV	IMF	SELECTION INDEXES			
+2.1	+5.4	-0.3	+4.8	+36	+58	+80	+80	+12	+2.1	+58	+6.2	+1.7	+3.0	+0.2	+1.6	SM	Grass	Grain	EU
52%	46%	64%	73%	69%	69%	69%	64%	57%	63%	60%	55%	58%	62%	56%	57%	+\$117	+\$117	+\$145	+\$132

Traits Observed: CE,BWT,200WT,400WT,FAT,EMA,IMF,Genomics

Notes: Marios is a high performance, long, strong & sound son of Calibre with an impressive set of data. Ebvs rated top 1% rump fat, top 5% EMA, IMF, rib fat, grass & grain fed indexes, top 10% supermarket & EU indexes, top 20% carcass weight, top 25% 200 day weight & mature cow weight.

Purchaser: \$

LOT 42

BOWEN MADDOCK M92 (AI) (P)

BWNM092

Eye Pigment: 100-100 Born: 28/07/2016 Age: 23.5 mths

PP,IEF,HYF,DLF,

Tattoo: M092

ALLENDALE NATIONAL W168 (P)
 BOWEN DIAMANTINA D203 (AI) (P)
 BOWEN MATCHLESS Z152 (AI) (P)
SIRE: BOWEN DIAMANTINA J209 (P)
 BOWEN TORNADO Z260 (AI) (ET) (P)
 PEAKES IRISH MAID E317 (P)
 CAS IRISH MAID T209 (P)

GRASSMERE SPARK 330 (P)
 GRASSMERE SPARK 555 (IMP NZL) (P)
 GRASSMERE PRINCESS 245 (P)
DAM: BOWEN IRISH ROSE H260 (AI) (ET) (P)
 SEVENBARDOT HUMMEL Q60 (P)
 MERAWAH IRISH ROSE X147 (P)
 MERAWAH IRISH ROSE N20 (P)

MAY 2018 HEREFORD GROUP BREEDPLAN

CED	CEM	GL	BW	200d	400d	600d	Mcw	Milk	SS	CWT	EMA	Rib	Rump	RBV	IMF	SELECTION INDEXES			
-2.2	-1.5	-1.9	+5.6	+37	+60	+88	+80	+11	+1.9	+57	+2.7	+2.3	+3.4	-0.8	+1.3	SM	Grass	Grain	EU
39%	34%	71%	69%	63%	63%	62%	55%	42%	56%	52%	47%	50%	54%	48%	47%	+\$105	+\$102	+\$126	+\$114

Traits Observed: GL,CE,BWT,200WT,400WT,FAT,EMA,IMF,Genomics

Notes: This solid young sire has impressive weight, carcass and marbling data. Ebvs rated top 1% rib & rump fats, top 5% IMF, top 15% gestation length & grain fed index, top 20% 200, 600day weights, supermarket, grass fed & EU indexes, top 25% mature cow weight.

Purchaser: \$

LOT 43

BOWEN MARSDEN M126 (P)

BWNM126

Eye Pigment: 100-95 Born: 30/07/2016 Age: 23.5 mths

PP,IEF,HYF,DLF,

Tattoo: M126

DXB 7C BLOCKBUSTER 3K (IMP CAN) (P)
 BBSF 3K RANCHMAN 18R (IMP CAN) (P)
 BBSF 610F CINDY 86L (P)
SIRE: BOWEN COWBOY C245 (AI) (ET) (P)
 VALMA SOUTHERN STAR (AI) (ET) (P)
 BOWEN ROLLINA N61 (P)
 BOWEN ROLLINA D23 (AI) (P)

KENYA KIDMAN (P)
 BOWEN ARGYLE A355 (AI) (S)
 BOWEN VIRTUE S307 (P)
DAM: BOWEN HILDA D179 (P)
 KENYA LEGION 6 (AI) (P)
 BOWEN HILDA A101 (AI) (P)
 BOWEN HILDA X158 (P)

MAY 2018 HEREFORD GROUP BREEDPLAN

CED	CEM	GL	BW	200d	400d	600d	Mcw	Milk	SS	CWT	EMA	Rib	Rump	RBV	IMF	SELECTION INDEXES			
-4.6	+1.2	-2.5	+6.7	+36	+49	+68	+70	+9	+1.1	+39	+3.5	-0.2	-0.6	+1.3	+0.2	SM	Grass	Grain	EU
49%	40%	61%	74%	69%	70%	69%	63%	58%	62%	59%	53%	57%	61%	55%	56%	+\$63	+\$59	+\$67	+\$75

Traits Observed: CE,BWT,200WT,400WT,FAT,EMA,IMF,Genomics

Notes: Sound later maturing sire, pedigree contains very productive cow lines. Maternal brother sold in the 2013 Bowen Bull Sale, many sisters retained in stud. Ebvs rated top 10% gestation length, top 20% RBV & top 25% 200 day weight.

Purchaser: \$

LOT 44

BOWEN MASTERTON M204 (AI) (P)

BWNM204

Eye Pigment: 100-100 Born: 8/08/2016 Age: 23.5 mths

PP,IEF,HYF,DLF,

Tattoo: M204

KCF BENNETT 3008 M326 (P)
 NJW 73S M326 TRUST 100W ET (IMP USA) (ET) (P)
 NJW P606 72N DAYDREAM 73S (P)
SIRE: NJW 78P TWENTYTWELVE 190Z (IMP AUS) (AI) (ET) (P)
 RU 20X BOULDER 57G (IMP CAN) (P)
 NJW BW LADYSPORT DEW 78P ET (P)
 SADDLE-VALLEY LADYSPORT 120J (P)

DEBARRY EDEN (P)
 GUILFORD DUKE D26 (P)
 GUILFORD SATIN X10 (AI) (P)
DAM: BOWEN VIRGINIA H238 (P)
 DXB 7C BLOCKBUSTER 3K (IMP CAN) (P)
 BOWEN VIRGINIA A199 (AI) (ET) (P)
 JSF 271 VIRGINIA ET 5M (IMP CAN) (P)

MAY 2018 HEREFORD GROUP BREEDPLAN

CED	CEM	GL	BW	200d	400d	600d	Mcw	Milk	SS	CWT	EMA	Rib	Rump	RBV	IMF	SELECTION INDEXES			
-2.5	+1.4	+1.8	+5.9	+40	+67	+100	+86	+20	+2.5	+64	+5.2	+0.1	-0.6	+1.8	-0.1	SM	Grass	Grain	EU
42%	30%	74%	72%	67%	67%	65%	56%	41%	55%	54%	48%	51%	55%	48%	49%	+\$106	+\$99	+\$109	+\$117

Traits Observed: GL,CE,BWT,200WT,400WT,FAT,EMA,IMF

Notes: Big powerful weight for age Twenty Twelve son with a great set of data. Dam originated from the renowned Virginia family from Johner Stock farm in Canada. Ebvs rated top 5% 600 day weight, top 10% 200, 400 day weight, carcass weight & RBV, top 15%, all indexes top 25% or better.

Purchaser: \$

LOT 45

BOWEN MALIN M20 (AI) (P)

BWNM020

Eye Pigment: 100-100 Born: 12/08/2016 Age: 23.0 mths

PP,IEF,HYF,DLF,

Tattoo: M020

KOANUI ROCKET 0219 (IMP NZL) (P)
 PINE HILL CROSSFIRE C558 (AI) (P)
 PINE HILL GHOST MAPLE W16 (AI) (P)
SIRE: YAVENVALE JET FIRE J032 (P)
 KURRAJONG PARK B144 (P)
 YAVENVALE EMPRESS G320 (P)
 YAVENVALE EMPRESS C340 (H#)

ALLENDALE NATIONAL W168 (P)
 BOWEN DIAMANTINA D203 (AI) (P)
 BOWEN MATCHLESS Z152 (AI) (P)
DAM: BOWEN ROLLINA K136 (P)
 BOWEN URIARRA U96 (AI) (ET) (P)
 BOWEN ROLLINA X173 (P)
 BOWEN ROLLINA T10 (P)

MAY 2018 HEREFORD GROUP BREEDPLAN

CED	CEM	GL	BW	200d	400d	600d	Mcw	Milk	SS	CWT	EMA	Rib	Rump	RBV	IMF	SELECTION INDEXES			
-9.0	-7.1	+0.3	+7.4	+42	+71	+100	+98	+16	+2.3	+63	+3.1	-0.8	-1.3	+1.9	+0.0	SM	Grass	Grain	EU
47%	35%	74%	72%	67%	67%	65%	57%	42%	59%	55%	50%	53%	58%	51%	53%	+\$78	+\$69	+\$77	+\$87

Traits Observed: GL,CE,BWT,200WT,400WT,FAT,EMA,IMF,Genomics

Notes: High growth son of Jet Fire with extreme length of body, powerful sires outlook & soft skin type. Ebvs rated top 5% RBV, 200 to 600day & mature cow weight, top 10% carcass weight, top 25% scrotal & good milk.

Purchaser: \$

LOT 46

BOWEN MADAGASCAR M285 (AI) (P)

BWNM285

Eye Pigment: 100-100 Born: 22/07/2016 Age: 24.0 mths

PP,IEF,HYF,DLF,

Tattoo: M285

YARRAM HOT SHOT P028 (AI) (H)
 CAPETHORNE HOT SHOT 03 22 (P)
 CAPETHORNE AMETHYST U21 (P)
SIRE: MATARIKI HOLY - SMOKE (IMP NZL) (P)
 KOANUI BULL'S-EYE R60 (P)
 MATARIKI GIRLIE 00323 (P)
 MATARIKI GIRLIE 00323 (P)

OTAPAWA SPARK 3060 (ET) (IMP NZL) (AI) (ET) (P)
 BOWEN LASSER F140 (AI) (P)
 BOWEN MATCHLESS B157 (AI) (ET) (P)
HILDA J4 (AI) (P)
 HILDA KINGDOM BAY 070073 (IMP NZL) (P)
 HILDA F8 (AI) (P)
 BOWEN HILDA A101 (AI) (P)

WITHDRAWN

MAY 2018 HEREFORD GROUP BREEDPLAN

CED	CEM	GL	BW	200d	400d	600d	Mcw	Milk	SS	CWT	EMA	Rib	Rump	RBV	IMF	SELECTION INDEXES			
-10.1	-5.3	-1.6	+7.2	+50	+87	+94	+90	+12	+1.2	+65	+4.0	+1.3	+1.7	+0.2	+0.9	SM	Grass	Grain	EU
54%	49%	74%	72%	68%	68%	67%	62%	55%	63%	59%	55%	57%	60%	56%	56%	+\$80	+\$73	+\$87	+\$85

Traits Observed: GL,CE,BWT,200WT,400WT,FAT,EMA,IMF,Genomics

Notes: Madagascar is the only son of Holy Smoke in this years catalogue. Strong sires outlook, very eye catching with a high content of New Zealand bloodlines. Ebvs rated top 1% 200 day weight, top 5% carcass weight, top 10% rib, rump fats, 400, 600 day & mature cow weight, IMF top 15%, gestation length top 20% & EMA top 25%.

Purchaser: \$

LOT 47

BOWEN MALAY M233 (AI) (S)

BWNM233

Eye Pigment: 98-55 Born: 22/07/2016 Age: 24.0 mths

HP,IEF,HYF,DLF,

Tattoo: M233

FELTONS DOMINO 774 (P)
 FELTONS LEGEND 242 (IMP USA) (P)
 FELTONS G15 (P)
SIRE: MSU TCF REVOLUTION 4R (IMP USA) (P)
 REMITALL ONLINE 122L (IMP CAN) (P)
 MSU TCF RACHAEL ET 54N (P)
 HH MISS ADV 786G 1ET (H)

VALMA SOUTHERN STAR (AI) (ET) (P)
 BOWEN VINCENT V1 (S)
 BOWEN PRINCESS P146 (P)
DAM: BOWEN MAPLE J75 (AI) (P)
 JSF 37 271 DEVO 23C (IMP CAN) (P)
 BOWEN MAPLE A197 (AI) (ET) (P)
 BOWEN MAPLE P111 (P)

MAY 2018 HEREFORD GROUP BREEDPLAN

CED	CEM	GL	BW	200d	400d	600d	Mcw	Milk	SS	CWT	EMA	Rib	Rump	RBV	IMF	SELECTION INDEXES			
+3.5	+1.7	-0.3	+3.4	+37	+62	+87	+70	+19	+1.8	+64	+5.5	+1.5	+1.6	+0.2	+0.8	SM	Grass	Grain	EU
51%	42%	74%	72%	68%	69%	67%	62%	56%	62%	59%	56%	58%	61%	56%	57%	+\$114	+\$111	+\$130	+\$123

Traits Observed: GL,CE,BWT,200WT,400WT,FAT,EMA,IMF,Genomics

Notes: Top pedigree lines in this sire with Maple, Princess & Vincent. Outstanding balance of data. Heifer bull, low birth data. Ebvs rated top 5% EMA & rib fat, top 10% carcass weight, grain fed & supermarket indexes, top 15% EU index, top 20% IMF, milk & 200 to 600 day weights, top25% grass fed index.

Purchaser: \$

LOT 48**BOWEN MAGGLIO M50 (P)****BWNM050**

Eye Pigment: 90-75 Born: 4/07/2016 Age: 24.5 mths

HP,IEF,HYF,DLF,

Tattoo: M050

DXB 7C BLOCKBUSTER 3K (IMP CAN) (P)
 BBSF 3K RANCHMAN 18R (IMP CAN) (P)
 BBSF 610F CINDY 86L (P)
SIRE: BOWEN COWBOY C245 (AI) (ET) (P)
 VALMA SOUTHERN STAR (AI) (ET) (P)
 BOWEN ROLLINA N61 (P)
 BOWEN ROLLINA D23 (AI) (P)

KENYA KIDMAN (P)
 BOWEN SHELLFORD Z149 (AI) (P)
 BOWEN ROLLINA W324 (P)
DAM: BOWEN RHODA C232 (P)
 TYCOLAH ZORRO (P)
 BOWEN RHODA A5 (AI) (P)
 WIRANYA RHODA Q25 (AI) (P)

MAY 2018 HEREFORD GROUP BREEDPLAN

CED	CEM	GL	BW	200d	400d	600d	Mcw	Milk	SS	CWT	EMA	Rib	Rump	RBV	IMF	SELECTION INDEXES			
+4.1	+3.0	-1.8	+3.7	+29	+45	+59	+47	+14	+1.5	+37	+3.5	+0.9	+1.2	+0.6	+0.7	SM	Grass	Grain	EU
48%	39%	58%	74%	68%	68%	68%	61%	57%	63%	57%	51%	55%	59%	53%	54%	+\$85	+\$85	+\$101	+\$97

Traits Observed: CE,BWT,200WT,400WT,FAT,EMA,IMF,Genomics

Notes: Outstanding sire lines in this bulls pedigree. Cowboy steer carcass data have marble scored consistently and up to as high as 4. Maternal brothers sold in the 2012 & 2015 Bowen bull sales. Long bodied, has Short gestation & low birth. Ebvs rated top 15% gestation length, top 20% IMF, top 25% rib & rump fats.

Purchaser: \$

LOT 49**BOWEN MACK M128 (S)****BWNM128**

Eye Pigment: 100-100 Born: 4/08/2016 Age: 23.5 mths

HP,IEF,HYF,DLF,

Tattoo: M128

ALLEDALE WATERHOUSE D1 (P)
 DAYS CALIBRE G74 (P)
 ALLEDALE DAWN C62 (AI) (P)
SIRE: BOWEN KYOOMA K27 (P)
 BOWEN ARGYLE A355 (AI) (S)
 BOWEN KATIE D236 (P)
 BOWEN KATIE A336 (P)

KENYA KIDMAN (P)
 BOWEN ARGYLE A355 (AI) (S)
 BOWEN VIRTUE S307 (P)
DAM: PEAKES IRISH GIRL E30 (P)
 BOWEN TRIFECTA T299 (P)
 PEAKES IRISH GIRL A135 (AI) (P)
 CAS IRISH GIRL V326 (AI) (P)

MAY 2018 HEREFORD GROUP BREEDPLAN

CED	CEM	GL	BW	200d	400d	600d	Mcw	Milk	SS	CWT	EMA	Rib	Rump	RBV	IMF	SELECTION INDEXES			
-1.1	+3.0	-0.7	+4.3	+34	+48	+68	+65	+9	+1.2	+46	+3.9	+0.5	+0.9	+0.5	+1.1	SM	Grass	Grain	EU
42%	34%	49%	64%	65%	65%	63%	57%	46%	50%	54%	48%	52%	57%	50%	50%	+\$86	+\$84	+\$105	+\$99

Traits Observed: CE,200WT,400WT,FAT,EMA,IMF

Notes: Deep bodied slick skin a tidy performance sire. Positive fats, rated top 10% IMF & top 25% EMA.

Purchaser: \$

LOT 50**BOWEN MAWSON M218 (AI) (P)****BWNM218**

Eye Pigment: 100-100 Born: 29/06/2016 Age: 24.5 mths

PP,IEF,HYF,DLF,

Tattoo: M218

KOANUI ROCKET 0219 (IMP NZL) (P)
 PINE HILL CROSSFIRE C558 (AI) (P)
 PINE HILL GHOST MAPLE W16 (AI) (P)
SIRE: YAVENVALE JET FIRE J032 (P)
 KURRAJONG PARK B144 (P)
 YAVENVALE EMPRESS G320 (P)
 YAVENVALE EMPRESS C340 (H#)

ALLEDALE NATIONAL W168 (P)
 BOWEN DIAMANTINA D203 (AI) (P)
 BOWEN MATCHLESS Z152 (AI) (P)
DAM: BOWEN MISCHIEF J73 (P)
 BOWEN ARGYLE A355 (AI) (S)
 PEAKES MISCHIEF D124 (P)
 AMOR MISCHIEF A95 (P)

MAY 2018 HEREFORD GROUP BREEDPLAN

CED	CEM	GL	BW	200d	400d	600d	Mcw	Milk	SS	CWT	EMA	Rib	Rump	RBV	IMF	SELECTION INDEXES			
-2.6	-3.7	-0.3	+3.7	+34	+56	+76	+68	+15	+1.5	+52	+2.5	-0.3	-0.8	+1.4	+0.0	SM	Grass	Grain	EU
45%	34%	73%	72%	67%	67%	65%	58%	41%	58%	55%	50%	53%	58%	51%	53%	+\$72	+\$67	+\$71	+\$80

Traits Observed: GL,CE,BWT,200WT,400WT,FAT,EMA,IMF,Genomics

Notes: Safe calving ease son of Jet Fire, Mawson is an easy doing sire. His grandam Mischief D124 had exceptional marbling. Good birth weight & milk, rated top 15% of the breed for RBV.

Purchaser: \$

LOT 51

BOWEN MACKENZIE M46 (P)

BWNM046

Eye Pigment: 100-100 Born: 10/08/2016 Age: 23.5 mths

HP,IEF,HYF,DLF,

Tattoo: M046

FELTONS SOUNDER 957 (P)
 EFBEEF FOREMOST U208 (IMP USA) (P)
 EFBEEF G824 KATE S610 ET (P)
SIRE: BOWEN COORS LIGHT J53 (AI) (ET) (P)
 BOWEN URALBA U160 (P)
 BOWEN ROLLINA B385 (P)
 BOWEN ROLLINA Y73 (P)

BRAYBOOK CHEROKEE C200 (AI) (P)
 BOWEN FRONTIER F314 (P)
 BOWEN HILDA W188 (P)
DAM: BOWEN PRUNELLA J136 (P)
 DEBARRY HIGHLANDER 2 (AI) (S)
 PEAKES PRUNELLA B9 (P)
 CAS PRUNELLA U114 (P)

MAY 2018 HEREFORD GROUP BREEDPLAN

CED	CEM	GL	BW	200d	400d	600d	Mcw	Milk	SS	CWT	EMA	Rib	Rump	RBV	IMF	SELECTION INDEXES			
+1.6	+3.9	-1.4	+3.7	+33	+53	+73	+75	+15	+2.7	+49	+3.3	-0.8	-1.7	+1.8	-0.5	SM	Grass	Grain	EU
36%	28%	50%	69%	64%	64%	63%	55%	40%	55%	52%	45%	50%	55%	48%	48%	+\$81	+\$76	+\$75	+\$93

Traits Observed: CE,BWT,200WT,400WT,FAT,EMA,IMF,Genomics

Notes: Mackenzie will add pigment, body length & frame to his progeny. He has large testicles & a tight sheath. Short gestation, low birthweight to high growth data. Good milk, low birth weight, gestation rated top 20%, scrotal top 15% & RBV top 10% rated within the breed.

Purchaser: \$

LOT 52

BOWEN MASON M21 (AI) (P)

BWNM021

Eye Pigment: 100-100 Born: 8/08/2016 Age: 23.5 mths

PP,IEF,HYF,DLF,

Tattoo: M021

KOANUI ROCKET 0219 (IMP NZL) (P)
 PINE HILL CROSSFIRE C558 (AI) (P)
 PINE HILL GHOST MAPLE W16 (AI) (P)
SIRE: YAVENVALE JET FIRE J032 (P)
 KURRAJONG PARK B144 (P)
 YAVENVALE EMPRESS G320 (P)
 YAVENVALE EMPRESS C340 (H#)

ALLENDALE WATERHOUSE D1 (P)
 DAYS CALIBRE G74 (P)
 ALLENDALE DAWN C62 (AI) (P)
DAM: BOWEN LADY ALMOND K81 (P)
 BOWEN VALOUR V39 (AI) (P)
 PEAKES LADY ALMOND C29 (AI) (P)
 BINBARRA LADY ALMOND W33 (P)

MAY 2018 HEREFORD GROUP BREEDPLAN

CED	CEM	GL	BW	200d	400d	600d	Mcw	Milk	SS	CWT	EMA	Rib	Rump	RBV	IMF	SELECTION INDEXES			
+5.4	+6.9	-1.6	+1.7	+30	+51	+64	+59	+14	+2.6	+52	+3.6	+0.0	-0.2	+1.0	+0.8	SM	Grass	Grain	EU
45%	34%	74%	72%	67%	67%	65%	57%	42%	59%	54%	49%	53%	58%	51%	52%	+\$95	+\$94	+\$111	+\$109

Traits Observed: GL,CE,BWT,200WT,400WT,FAT,EMA,IMF,Genomics

Notes: Mason excels in doing ability & has fantastic temperament. Great Low birth ebvs rated top 10% birth weight & top 20% gestation length & IMF, top 15% scrotal, top 25% grain fed & EU indexes.

Purchaser: \$

LOT 53

BOWEN MERREDIN M274 (AI) (P)

BWNM274

Eye Pigment: 100-100 Born: 25/07/2016 Age: 24.0 mths

PP,IEF,HYF,DLF,

Tattoo: M274

KOANUI ROCKET 0219 (IMP NZL) (P)
 PINE HILL CROSSFIRE C558 (AI) (P)
 PINE HILL GHOST MAPLE W16 (AI) (P)
SIRE: YAVENVALE JET FIRE J032 (P)
 KURRAJONG PARK B144 (P)
 YAVENVALE EMPRESS G320 (P)
 YAVENVALE EMPRESS C340 (H#)

CAPETHORNE HOT SHOT 03 22 (P)
 MATARIKI HOLY - SMOKE (IMP NZL) (P)
 MATARIKI GIRLIE 00323 (P)
DAM: BOWEN MAPLE J26 (AI) (P)
 BOWEN CROWN PRINCE C330 (AI) (P)
 BOWEN MAPLE G36 (P)
 BOWEN MAPLE B177 (AI) (ET) (P)

MAY 2018 HEREFORD GROUP BREEDPLAN

CED	CEM	GL	BW	200d	400d	600d	Mcw	Milk	SS	CWT	EMA	Rib	Rump	RBV	IMF	SELECTION INDEXES			
+2.1	+3.0	-1.0	+1.5	+24	+44	+54	+35	+15	+1.7	+41	+3.2	+1.5	+2.2	+0.0	+0.9	SM	Grass	Grain	EU
47%	36%	74%	72%	67%	68%	66%	59%	42%	59%	56%	51%	54%	59%	52%	53%	+\$83	+\$84	+\$102	+\$92

Traits Observed: GL,CE,BWT,200WT,400WT,FAT,EMA,IMF,Genomics

Notes: Merredin is easy doing with roundness to his carcass with great low birth weight EBVs rated in the top 10% of the breed, top 5% rib & rump fats, top 15% IMF & good milk.

Purchaser: \$

LOT 54

BOWEN MATTHEW M9 (P)

BWNM009

Eye Pigment: 100-100 Born: 20/05/2016 Age: 26.0 mths

PP,IEF,HYF,DLF,

Tattoo: M009

KOANUI ROCKET 0219 (IMP NZL) (P)
 PINE HILL CROSSFIRE C558 (AI) (P)
 PINE HILL GHOST MAPLE W16 (AI) (P)
SIRE: YAVENVALE JET FIRE J032 (P)
 KURRAJONG PARK B144 (P)
 YAVENVALE EMPRESS G320 (P)
 YAVENVALE EMPRESS C340 (H#)

KOANUI ROCKET 0219 (IMP NZL) (P)
 BOWEN ESPLANADE E332 (AI) (P)
 BOWEN ROLLINA B347 (P)
DAM: BOWEN FANCY H122 (AI) (P)
 TYCOLAH ZORRO (P)
 BOWEN FANCY E205 (AI) (P)
 BOWEN FANCY A381 (AI) (P)

MAY 2018 HEREFORD GROUP BREEDPLAN

CED	CEM	GL	BW	200d	400d	600d	Mcw	Milk	SS	CWT	EMA	Rib	Rump	RBV	IMF	SELECTION INDEXES			
+6.6	+6.6	-2.2	+1.7	+28	+49	+65	+62	+20	+1.8	+44	+1.6	+0.4	+0.7	+0.2	+0.5	SM	Grass	Grain	EU
45%	33%	65%	69%	66%	67%	65%	58%	41%	60%	55%	50%	54%	58%	52%	54%	+\$86	+\$83	+\$91	+\$92

Traits Observed: CE,BWT,200WT,400WT,FAT,EMA,IMF,Genomics

Notes: This sire ticks all boxes for low birth weight, short gestation & calving ease a top heifer bull with slick skin & a fantastic temperament from an impressive cow family. EBVS rated top 10% gestation length, birth weight, top 15% milk.

Purchaser: \$.....

LOT 55

BOWEN MARSEL M19 (P)

BWNM019

Eye Pigment: 100-100 Born: 11/07/2016 Age: 24.5 mths

PP,IEF,HYF,DLF,

Tattoo: M019

KOANUI ROCKET 0219 (IMP NZL) (P)
 PINE HILL CROSSFIRE C558 (AI) (P)
 PINE HILL GHOST MAPLE W16 (AI) (P)
SIRE: YAVENVALE JET FIRE J032 (P)
 KURRAJONG PARK B144 (P)
 YAVENVALE EMPRESS G320 (P)
 YAVENVALE EMPRESS C340 (H#)

HEATHERDALE OPIUM U78 (AI) (P)
 BOWEN ELVSTROM E175 (S)
 BOWEN RUTH B19 (AI) (P)
DAM: BOWEN HILDA G1377 (P)
 BOWEN STU-GRADON W404 (S)
 BOWEN HILDA D38 (P)
 BOWEN HILDA X158 (P)

MAY 2018 HEREFORD GROUP BREEDPLAN

CED	CEM	GL	BW	200d	400d	600d	Mcw	Milk	SS	CWT	EMA	Rib	Rump	RBV	IMF	SELECTION INDEXES			
+5.3	+4.8	-1.3	+4.2	+32	+58	+78	+84	+13	+2.1	+50	+3.3	-1.0	-1.9	+2.0	-0.1	SM	Grass	Grain	EU
43%	31%	57%	72%	66%	67%	65%	58%	40%	57%	54%	48%	53%	57%	50%	51%	+\$89	+\$84	+\$88	+\$102

Traits Observed: CE,BWT,200WT,400WT,FAT,EMA,IMF,Genomics

Notes: A long strong powerful son of Jet Fire with moderate birth weight & short gestation. M19 is mobile with terrific skin type. His dam Hilda G1377 is one of the deepest volume cows in the herd. Ebvs rated top 5% RBV, top 15% mature cow weight & top 25% gestation length.

Purchaser: \$.....

LOT 56

BOWEN MAMMOTH M225 (P)

BWNM225

Eye Pigment: 100-100 Born: 27/07/2016 Age: 23.5 mths

PP,DLF,IEF,HYF,

Tattoo: M225

KOANUI ROCKET 0219 (IMP NZL) (P)
 PINE HILL CROSSFIRE C558 (AI) (P)
 PINE HILL GHOST MAPLE W16 (AI) (P)
SIRE: YAVENVALE JET FIRE J032 (P)
 KURRAJONG PARK B144 (P)
 YAVENVALE EMPRESS G320 (P)
 YAVENVALE EMPRESS C340 (H#)

GRASSMERE SPARK 330 (P)
 GRASSMERE SPARK 555 (IMP NZL) (P)
 GRASSMERE PRINCESS 245 (P)
DAM: BOWEN SALLY TANGENT H304 (AI) (ET) (P)
 BOWEN MINISTER Y168 (S)
 STUDBROOK SALLY TANGENT B027 (P)
 STUDBROOK SALLY TANGENT V068 (AI) (P)

MAY 2018 HEREFORD GROUP BREEDPLAN

CED	CEM	GL	BW	200d	400d	600d	Mcw	Milk	SS	CWT	EMA	Rib	Rump	RBV	IMF	SELECTION INDEXES			
+0.9	+5.8	-0.2	+3.3	+31	+56	+76	+61	+13	+1.7	+50	+3.3	+1.1	+1.3	+0.3	+1.0	SM	Grass	Grain	EU
46%	34%	60%	72%	66%	66%	64%	56%	41%	58%	53%	49%	51%	56%	50%	50%	+\$101	+\$99	+\$121	+\$112

Traits Observed: CE,BWT,200WT,400WT,FAT,EMA,IMF,Genomics

Notes: Soft butter soft Jet Fire son. Ebvs rated with in the bred top 10% IMF, top 15% rib fat, top 20% rump fat, top 25% birth weight & all indexes.

Purchaser: \$.....

LOT 57

BOWEN MARK M109 (S)

BWNM109

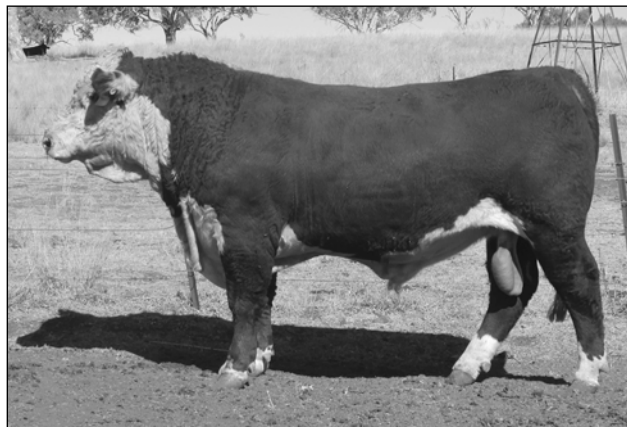
Eye Pigment: 100-100 Born: 14/08/2016 Age: 23.0 mths

HP,DLF,IEF,HYF,GGPLD,

Tattoo: M109

ALLEDALE TIPPERARY D13 (AI) (ET) (P)
 DAYS WIZARD F84 (P)
 ALLEDALE DAWN Z21 (AI) (P)
SIRE: THE RANCH TIPPERARY J06 (AI) (P)
 KIDMAN TAIT C194 (P)
 THE RANCH SUSAN F02 (P)
 THE RANCH SUSAN C82 (P)

BOWEN MINISTER Y168 (S)
 STUDBROOK PRINCE B034 (S)
 BOWEN PRINCESS T65 (P)
DAM: BOWEN ROLLINA E250 (P)
 BOWEN URALBA U160 (P)
 BOWEN ROLLINA A34 (P)
 BOWEN ROLLINA X70 (P)



MAY 2018 HEREFORD GROUP BREEDPLAN

CED	CEM	GL	BW	200d	400d	600d	Mcw	Milk	SS	CWT	EMA	Rib	Rump	RBV	IMF	SELECTION INDEXES			
-1.9	-2.4	+1.2	+4.9	+30	+54	+77	+72	+13	+2.5	+48	+4.3	-0.1	-0.3	+1.9	+0.0	SM	Grass	Grain	EU
40%	28%	45%	72%	67%	66%	64%	57%	44%	54%	53%	46%	51%	56%	49%	49%	+\$78	+\$73	+\$79	+\$87

Traits Observed: CE,BWT,200WT,400WT,FAT,EMA,IMF,Genomics

Notes: Soft easy doing Tipperary son. Maternal brother sold in 2016 Bowen Bull sale \$10,000. Rated with in the breed in top 5% RBV, top 20% scrotal & EMA

Purchaser: \$

LOT 58

BOWEN MIKE M26 (AI) (P)

BWNM026

Eye Pigment: 100-100 Born: 10/08/2016 Age: 23.5 mths

PP,IEF,HYF,DLF,

Tattoo: M026

KOANUI ROCKET 0219 (IMP NZL) (P)
 PINE HILL CROSSFIRE C558 (AI) (P)
 PINE HILL GHOST MAPLE W16 (AI) (P)
SIRE: YAVENVALE JET FIRE J032 (P)
 KURRAJONG PARK B144 (P)
 YAVENVALE EMPRESS G320 (P)
 YAVENVALE EMPRESS C340 (H#)

OTAPAWA SPARK 3060 (ET) (IMP NZL) (AI) (ET) (P)
 BOWEN FLASHER F140 (AI) (P)
 BOWEN MATCHLESS B157 (AI) (ET) (P)
DAM: BOWEN HILDA K74 (AI) (P)
 KENYA LEGION 6 (AI) (P)
 BOWEN HILDA A101 (AI) (P)
 BOWEN HILDA X158 (P)



MAY 2018 HEREFORD GROUP BREEDPLAN

CED	CEM	GL	BW	200d	400d	600d	Mcw	Milk	SS	CWT	EMA	Rib	Rump	RBV	IMF	SELECTION INDEXES			
-2.6	+0.8	-2.0	+5.3	+37	+55	+77	+78	+19	+1.3	+50	+2.6	-1.0	-2.1	+1.6	+0.1	SM	Grass	Grain	EU
46%	32%	75%	71%	66%	64%	63%	55%	41%	58%	52%	46%	51%	55%	48%	52%	+\$68	+\$62	+\$68	+\$78

Traits Observed: GL,CE,BWT,200WT,400WT,FAT,EMA,IMF,Genomics

Notes: Great Jet Fire Son, excels in softness & roundness of carcass. Ebvs rated top 10% RBV, top 15% gestation length, top 20% 200 day weight & milk, top 25% mature cow weight.

Purchaser: \$

LOT 59

BOWEN MORROCO M255 (AI) (P)

BWNM255

Eye Pigment: 100-100 Born: 24/07/2016 Age: 24.0 mths

PP,IEF,HYF,DLF,

Tattoo: M255

KOANUI ROCKET 0219 (IMP NZL) (P)
 PINE HILL CROSSFIRE C558 (AI) (P)
 PINE HILL GHOST MAPLE W16 (AI) (P)

SIRE: YAVENVALE JET FIRE J032 (P)

KURRAJONG PARK B144 (P)
 YAVENVALE EMPRESS G320 (P)
 YAVENVALE EMPRESS C340 (H#)

ALLENDALE WATERHOUSE D1 (P)
 HUNTER LAKES FONZ F15 (AI) (P)
 BOWEN RUTH B59 (P)

DAM: BOWEN MATCHLESS J197 (P)

BOWEN ARGYLE A355 (AI) (S)
 BOWEN MATCHLESS C177 (AI) (P)
 BOWEN MATCHLESS Z141 (AI) (P)

MAY 2018 HEREFORD GROUP BREEDPLAN

CED	CEM	GL	BW	200d	400d	600d	Mcw	Milk	SS	CWT	EMA	Rib	Rump	RBV	IMF	SELECTION INDEXES			
+0.8	+3.4	+1.0	+3.0	+32	+53	+71	+53	+18	+2.2	+49	+3.9	+0.3	+0.4	+1.4	+0.2	SM	Grass	Grain	EU
44%	32%	73%	72%	66%	64%	63%	54%	40%	57%	52%	41%	50%	54%	46%	51%	+\$93	+\$91	+\$102	+\$105

Traits Observed: GL,CE,BWT,200WT,400WT,FAT,EMA,IMF,Genomics

Notes: Sire Jet Fire repeatably produces soundness & quality in his progeny. Low birth bull would suit heifers. Ebvs rated top 15% RBV, top 25% birthweight, milk, EMA & has positive fats.

Purchaser: \$

LOT 60

BOWEN MINSTREL M261 (P)

BWNM261

Eye Pigment: 100-100 Born: 14/08/2016 Age: 23.0 mths

PP,IEF,HYF,DLF,

Tattoo: M261

ALLENDALE VAGABOND A74 (AI) (P)
 ALLENDALE WATERHOUSE D1 (P)
 ALLENDALE MARLINE X185 (P)

SIRE: DAYS CALIBRE G74 (P)

ALLENDALE ROBIN HOOD Z239 (P)
 ALLENDALE DAWN C62 (AI) (P)
 ALLENDALE DAWN A150 (AI) (ET) (P)

ALLENDALE MUSKETEER (AI) (S)
 BOWEN STU-GRADON W404 (S)
 BOWEN LIONESS P244 (AI) (P)

DAM: BOWEN HILDA D38 (P)

BOWEN QUEBEC Q6 (AI) (P)
 BOWEN HILDA X158 (P)
 BOWEN HILDA U192 (AI) (P)



MAY 2018 HEREFORD GROUP BREEDPLAN

CED	CEM	GL	BW	200d	400d	600d	Mcw	Milk	SS	CWT	EMA	Rib	Rump	RBV	IMF	SELECTION INDEXES			
-1.6	+6.4	+0.1	+5.9	+33	+58	+83	+113	+5	+2.6	+52	+5.5	+0.2	+0.5	+1.0	+1.3	SM	Grass	Grain	EU
51%	44%	62%	74%	69%	70%	69%	64%	58%	62%	60%	54%	57%	61%	56%	56%	+\$92	+\$88	+\$107	+\$106

Traits Observed: CE,BWT,200WT,400WT,FAT,EMA,IMF,Genomics

Notes: What a profile to this soft easy doing Calibre son. He has superb carcass & style. Positive fats, ebvs rated top 1% mature cow weight, top 5% EMA & IMF, top 15% scrotal.

Purchaser: \$

LOT 61

BOWEN MURPHY MAN M151 (P)

BWNM151

Eye Pigment: 100-100 Born: 29/08/2016 Age: 22.5 mths

PP,DLF,IEF,HYF,

Tattoo: M151

ALLEDALE VAGABOND A74 (AI) (P)
 ALLEDALE WATERHOUSE D1 (P)
 ALLEDALE MARLINE X185 (P)

KLONDIKE 500Z FEDERATION 7C (IMP CAN) (P)
 DXB 7C BLOCKBUSTER 3K (IMP CAN) (P)
 SADDLE-VALLEY 46B DONNA 833H (IMP CAN) (P)

SIRE: DAYS CALIBRE G74 (P)

DAM: BOWEN MATCHLESS B186 (AI) (ET) (P)

ALLEDALE ROBIN HOOD Z239 (P)
 ALLEDALE DAWN C62 (AI) (P)
 ALLEDALE DAWN A150 (AI) (ET) (P)

BRONWYN T205-MOCCONA K40 (AI) (ET) (P)
 BOWEN MATCHLESS S238 (AI) (ET) (P)
 BOWEN MATCHLESS G36 (P)

MAY 2018 HEREFORD GROUP BREEDPLAN

CED	CEM	GL	BW	200d	400d	600d	Mcw	Milk	SS	CWT	EMA	Rib	Rump	RBV	IMF	SELECTION INDEXES			
-1.6	+4.5	-0.9	+5.4	+35	+59	+82	+95	+11	+3.2	+52	+5.7	-0.2	-0.3	+1.5	+0.8	SM	Grass	Grain	EU
53%	46%	64%	69%	68%	69%	68%	62%	59%	65%	60%	55%	57%	61%	56%	57%	+\$98	+\$94	+\$112	+\$115

Traits Observed: CE,200WT,400WT,FAT,EMA,IMF,Genomics

Notes: Athletic free moving powerful sire. Maternal brothers sold in previous Bowen Bull sales selling up to \$10,000. Ebvs rated top 5% mature cow weight & EMA, top 15% RBV, top 20% IMF & EU index, top 25% 400 day weight, supermarket & grain fed indexes.

Purchaser: \$

LOT 62

BOWEN MOSSVALE M237 (P)

BWNM237

Eye Pigment: 100-100 Born: 29/08/2016 Age: 22.5 mths

HP,IEF,HYF,DLF,

Tattoo: M237

FELTONS SOUNDER 957 (P)
 EFBEEF FOREMOST U208 (IMP USA) (P)
 EFBEEF G824 KATE S610 ET (P)

ALLEDALE WATERHOUSE D1 (P)
 HUNTER LAKES FONZ F15 (AI) (P)
 BOWEN RUTH B59 (P)

SIRE: BOWEN COORS LIGHT J53 (AI) (ET) (P)

DAM: BOWEN MATCHLESS J312 (P)

BOWEN URALBA U160 (P)
 BOWEN ROLLINA B385 (P)
 BOWEN ROLLINA Y73 (P)

BOWEN VINCENT V1 (S)
 BOWEN MATCHLESS Z141 (AI) (P)
 BOWEN MATCHLESS V15 (AI) (P)

MAY 2018 HEREFORD GROUP BREEDPLAN

CED	CEM	GL	BW	200d	400d	600d	Mcw	Milk	SS	CWT	EMA	Rib	Rump	RBV	IMF	SELECTION INDEXES			
+3.6	+3.7	-2.2	+4.6	+38	+63	+90	+87	+18	+3.2	+59	+3.2	-0.3	-0.9	+1.6	-0.3	SM	Grass	Grain	EU
37%	30%	52%	69%	64%	64%	63%	55%	41%	55%	52%	45%	50%	54%	48%	48%	+\$105	+\$98	+\$103	+\$117

Traits Observed: CE,BWT,200WT,400WT,FAT,EMA,IMF,Genomics

Notes: Great carcass data from the Coors Light son. Ebvs rated top 10% gestation length & RBV, top 15% carcass weight, 200day to 600day weights & mature cow weight, top 20% supermarket, grass fed & EU indexes, top 25% milk.

Purchaser: \$

LOT 63

BOWEN MONTROSE M308 (P)

BWNM308

Eye Pigment: 100-100 Born: 6/10/2016 Age: 21.5 mths

PP,DLF,IEF,HYF,

Tattoo: M308

DXB 7C BLOCKBUSTER 3K (IMP CAN) (P)
 BBSF 3K RANCHMAN 18R (IMP CAN) (P)
 BBSF 610F CINDY 86L (P)

BOWEN MINISTER Y168 (S)
 STUDBROOK PRINCE B034 (S)
 BOWEN PRINCESS T65 (P)

SIRE: BOWEN COWBOY C245 (AI) (ET) (P)

DAM: BOWEN VIRTUE D240 (P)

VALMA SOUTHERN STAR (AI) (ET) (P)
 BOWEN ROLLINA N61 (P)
 BOWEN ROLLINA D23 (AI) (P)

BOWEN HEADLINE H39 (AI) (P)
 BOWEN VIRTUE Q225 (P)
 BOWEN VIRTUE M107 (S)

MAY 2018 HEREFORD GROUP BREEDPLAN

CED	CEM	GL	BW	200d	400d	600d	Mcw	Milk	SS	CWT	EMA	Rib	Rump	RBV	IMF	SELECTION INDEXES			
+0.2	+1.6	-1.0	+5.6	+32	+52	+74	+56	+12	+2.0	+43	+4.4	+0.8	+0.8	+1.3	+0.3	SM	Grass	Grain	EU
49%	40%	57%	73%	68%	68%	68%	62%	58%	59%	58%	51%	55%	59%	53%	55%	+\$89	+\$86	+\$99	+\$99

Traits Observed: BWT,200WT,400WT,FAT,EMA,IMF

Notes: Very high yielding Cowboy son, don't miss out this is the last of the Cowboy Sons, they are so sound in structure with tremendous carcass attributes. Cowboy progeny excel in marbling on the hook. Positive fats, ebvs rated top 15% EMA & top 20% RBV.

Purchaser: \$

LOT 64

BOWEN MOSSIMO M177 (P)

BWNM177

Eye Pigment: 100-100 Born: 28/08/2016 Age: 22.5 mths

PP,DLF,IEF,HYF,

Tattoo: M177

ALLENDALE TIPPERARY D13 (AI) (ET) (P)
 DAYS WIZARD F84 (P)
 ALLENDALE DAWN Z21 (AI) (P)
SIRE: THE RANCH TIPPERARY J06 (AI) (P)
 KIDMAN TAIT C194 (P)
 THE RANCH SUSAN F02 (P)
 THE RANCH SUSAN C82 (P)

4K KFF KAZZ (IMP USA) (P)
 BOWEN VALOUR V39 (AI) (P)
 BOWEN MATCHLESS S238 (AI) (ET) (P)
DAM: BOWEN NANCY B317 (P)
 VALMA SOUTHERN STAR (AI) (ET) (P)
 BOWEN NANCY R194 (P)
 BOWEN NANCY H73 (AI) (P)



MAY 2018 HEREFORD GROUP BREEDPLAN

CED	CEM	GL	BW	200d	400d	600d	Mcw	Milk	SS	CWT	EMA	Rib	Rump	RBV	IMF	SELECTION INDEXES			
-4.0	-0.7	+2.8	+4.3	+30	+42	+57	+50	+16	+1.5	+35	+1.6	+0.7	+0.9	+0.1	+0.1	SM	Grass	Grain	EU
41%	31%	49%	73%	68%	67%	65%	58%	46%	56%	54%	47%	52%	57%	50%	49%	+\$53	+\$49	+\$52	+\$58

Traits Observed: CE,BWT,200WT,400WT,FAT,EMA,IMF,Genomics

Notes: Great structure from an outstanding cow family. Fourth son from Dam Nancy B317 to be offered at a Bowen Bull sale. Daughter sold for \$8500 in 2012 Bowen Anniversary female sale. Positive fats.

Purchaser: \$

LOT 65

BOWEN MONTY M175 (P)

BWNM175

Eye Pigment: 100-100 Born: 21/09/2016 Age: 22.0 mths

PP,DLF,IEF,HYF,

Tattoo: M175

ALLENDALE VAGABOND A74 (AI) (P)
 ALLENDALE WATERHOUSE D1 (P)
 ALLENDALE MARLINE X185 (P)
SIRE: DAYS CALIBRE G74 (P)
 ALLENDALE ROBIN HOOD Z239 (P)
 ALLENDALE DAWN C62 (AI) (P)
 ALLENDALE DAWN A150 (AI) (ET) (P)

TYCOLAH WARRIOR (P)
 TYCOLAH ZORRO (P)
 TYCOLAH YUTTONG R85 (H#)
DAM: BOWEN RUTH B31 (AI) (P)
 SEVENBARDOT COXAN 18 (P)
 BOWEN RUTH V207 (AI) (P)
 BOWEN RUTH S315 (P)

MAY 2018 HEREFORD GROUP BREEDPLAN

CED	CEM	GL	BW	200d	400d	600d	Mcw	Milk	SS	CWT	EMA	Rib	Rump	RBV	IMF	SELECTION INDEXES			
+1.6	+5.0	-0.5	+5.4	+36	+59	+83	+95	+11	+2.7	+56	+5.9	+0.8	+1.5	+0.5	+1.8	SM	Grass	Grain	EU
53%	45%	66%	73%	69%	69%	69%	63%	59%	64%	60%	53%	57%	61%	55%	57%	+\$112	+\$110	+\$140	+\$128

Traits Observed: BWT,200WT,400WT,FAT,EMA,IMF,Genomics

Notes: Maternal brothers sold in previous Bowen Bull Sales have averaged \$7500. Ebvs rated top 1% IMF, top 5% mature cow weight & EMA, top 10% for all indexes, top 15% scrotal & rump fat, top 25% 200 day weight & carcass weight.

Purchaser: \$

LOT 66**BOWEN MARO M60 (AI) (P)****BWNM060**

Eye Pigment: 100-100 Born: 7/09/2016 Age: 22.5 mths

PP,IEF,HYF,DLF,

Tattoo: M060

ALLENDALE MUSKETEER (AI) (S)
 STUDBROOK D'ARTAGNION V086 (AI) (ET) (S)
 BOWEN TRICEL P180 (P)

SIRE: OTAPAWA SPARK 3060 (ET) (IMP NZL) (AI) (ET) (P)
 MONYMUSK DISCOVERY L34 (IMP NZL) (P)
 OTAPAWA SPOT P30 (P)
 OTAPAWA SPOT L44 (P)

MOUNTAIN VALLEY ROCKYNED B1 (P)
 CASCADE EL DORADO E27 (P)
 CASCADE IRISH MAID A37 (AI) (P)

DAM: BOWEN LADY ALMOND H143 (P)
 BOWEN VALOUR V39 (AI) (P)
 PEAKES LADY ALMOND B4 (P)
 BINBARRA LADY ALMOND W33 (P)

MAY 2018 HEREFORD GROUP BREEDPLAN

CED	CEM	GL	BW	200d	400d	600d	Mcw	Milk	SS	CWT	EMA	Rib	Rump	RBY	IMF	SELECTION INDEXES			
+0.9	+2.2	-4.4	+6.4	+48	+75	+109	+113	+17	+3.0	+74	+4.2	+0.5	+1.0	+0.7	+1.3	SM	Grass	Grain	EU
55%	51%	75%	73%	69%	69%	67%	63%	59%	65%	61%	57%	59%	61%	57%	58%	+\$128	+\$121	+\$146	+\$140

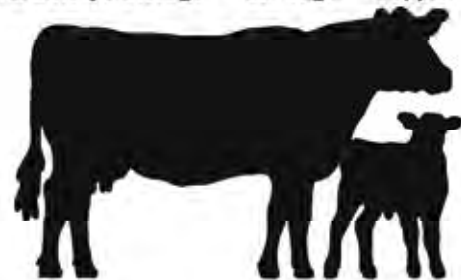
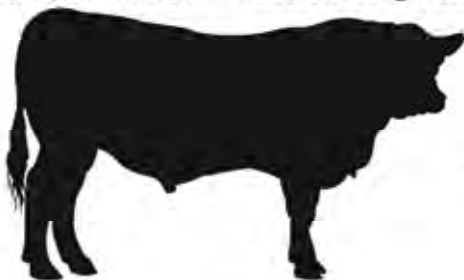
Traits Observed: GL,BWT,200WT,400WT,FAT,EMA,IMF,Genomics

Notes: Maro has exceptional data, good milk & positive fats. His dam from the top producing Lady Almond line. Ebvs rated top 1% 200 – 600day weights, mature cow weight, carcass weight. Top 5% gestation length, IMF, supermarket, grain fed & UE indexes, top 10% scrotal & top 20% EMA & Grass fed index.

Purchaser: \$

**FOR ALL YOUR ARTIFICIAL BREEDING NEEDS**

Artificial Insemination Ultrasound Preg Testing Semen Collection Semen & Embryo Storage Ear Tags Supplements

www.northernab.com.aubrendan@northernab.com.au

02 6545 2465

0427 417 148