

LOT
42

PEAKES BOWEN BRAVEHEART N713^{SV}

HBR

Born: 1/8/17
Age: 23.5 mths

AMFU, NHFU, CAFU, DDFU

Tattoo: PEK N713 (T&F)

EVTN713

TE MANIA UNLIMITED U3271
HIGHLANDER OF STERN AB
STERN 2664

SIRE: NZE1217000784 BRAVEHEART OF STERN

STERN 947
STERN 3886
STERN 1486

LEACHMAN RIGHT TIME
BT RIGHT TIME 24J
SITZ EVERELDA ENTENSE 1905

DAM: EVTE11 PEAKES MONICA E11

YTHANBRAE PRECISION U28
KANSAS MONICA W67
N'GOORA TWILIGHT U55



MID-MAY 2019 ANGUS AUSTRALIA BREEDPLAN

CED	CEM	GL	BW	200d	400d	600d	MCW	Milk	SS	CWT	EMA	Rib	Rump	RBY	IMF	SELECTION INDEXES			
																ABI	Dom.	Grain	Grass
-0.5	-1.7	-6.6	+5.7	+47	+91	+124	+95	+19	+2.0	+64	+7.6	-1.0	-0.2	+1.4	+0.5	+115	+109	+109	+119
60%	58%	85%	75%	72%	70%	74%	70%	66%	67%	66%	65%	67%	66%	63%	64%				

Traits Observed: GL,CE,BWT,200WT,600WT,FAT,EMA,IMF,Genomics

Notes: It is hard to go past this powerhouse bull with his carcass shape & high yield content his progeny will weigh like lead. Dam Monica E11 has been a cracker this is her sixth son to be offered at a Bowen Bull sale. EBVs rated within the breed top 13% EMA & RBY, 14% 600d, 16% milk & 19% 400d wt.

Purchaser: \$

LOT
43

PEAKES BOWEN REGENT N682^{SV}

HBR

Born: 15/7/17
Age: 24 mths

AMFU, NHFU, CA4%, DDFU, RGF

Tattoo: PEK N682 (T&F)

EVTN682

RENNYLEA XPONENTIAL X555
TE MANIA AMBASSADOR A134
TE MANIA LOWAN Y211

SIRE: BNAD145 TUWHARETOA REGENT D145

YTHANBRAE HENRY VIII U8
LAWSONS HENRY VIII Y5
YTHANBRAE DIRECTION T270

MYTTY IN FOCUS
MILWILLAH IN FOCUS B115
MILWILLAH BARUNAH Z18

DAM: EVTJ608 PEAKES ENNA J608

TE MANIA INFINITY 04 379 AB
PEAKES ENNA G15
BOWEN ENNA B41



MID-MAY 2019 ANGUS AUSTRALIA BREEDPLAN

CED	CEM	GL	BW	200d	400d	600d	MCW	Milk	SS	CWT	EMA	Rib	Rump	RBY	IMF	SELECTION INDEXES			
																ABI	Dom.	Grain	Grass
-1.6	-4.6	-5.4	+4.8	+45	+76	+107	+98	+13	+0.9	+69	+7.9	-0.4	-0.5	+0.3	+2.8	+118	+101	+132	+110
59%	60%	73%	74%	71%	69%	74%	69%	64%	66%	66%	65%	68%	66%	63%	65%				

Traits Observed: CE,BWT,200WT,600WT,FAT,EMA,IMF,Genomics

Notes: Great volume in this Regent son, if you don't have river country and want to breed marbling this is the type you must look at. EBVs rated within the breed top 13% or better for EMA & IMF.

Purchaser: \$

LOT
44

PEAKES BOWEN GABBA N559^{SV}

HBR

Born: 3/8/17
Age: 23.5 mths

AMFU, NHFU, CA8%, DDF, RGC

Tattoo: PEK N559 (T&F)

EVTN559

TUWHARETOA REGENT D145
DUNOON GABBA G548
DUNOON BEEAC Z120

SIRE: EVTK556 PEAKES GABBA K556

DSK HU X-TRA STRENGTH X4
BOWEN ABIGAIL B13
BOWEN ABIGAIL X31

CONNEALY ALL AROUND
KANSAS FATHOM F167
KANSAS ANNIE B170

DAM: EVTK729 PEAKES HEART K729

HIGHLANDER OF STERN AB
PEAKES HEART F29
PEAKES HEART C61



MID-MAY 2019 ANGUS AUSTRALIA BREEDPLAN

CED	CEM	GL	BW	200d	400d	600d	MCW	Milk	SS	CWT	EMA	Rib	Rump	RBY	IMF	SELECTION INDEXES			
																ABI	Dom.	Grain	Grass
-0.3	-0.9	-3.2	+3.9	+39	+70	+95	+91	+14	+2.5	+49	+2.4	+2.1	+2.5	-1.4	+4.0				
45%	44%	84%	73%	67%	66%	71%	63%	54%	61%	58%	57%	61%	58%	54%	55%	+\$109	+\$97	+\$127	+\$100

Traits Observed: GL,CE,BWT,200WT,600WT,FAT,EMA,IMF,Genomics

Notes: A high marbling, deep bodied young sire with a striking profile. Sired by Peakes Gabba K556 purchased by Mountain Valley Angus stud for the top price of \$30,000 at the 2016 Bowen Bull Sale. Ebvs rated top 5% of breed or better for rib, rump fats & IMF.

Purchaser: \$

LOT
45

PEAKES BOWEN EVIDENTLY N638^{SV}

HBR

Born: 15/8/17
Age: 23 mths

AMFU, NHFU, CAFU, DDFU

Tattoo: PEK N638 (T&F)

EVTN638

TE MANIA BARTEL B219
DUNOON EVIDENT E614
DUNOON ELSA B681

SIRE: NKLJ81 KANSAS EVIDENTLY J81

B C MARATHON 7022
KANSAS ANNIE E109
KANSAS ANNIE X164

TE MANIA UNLIMITED U3271
TE MANIA INFINITY 04 379 AB
TE MANIA 95102

DAM: EVTF103 PEAKES HEART F103

B T ULTRAVOX 297E
PEAKES HEART D57
BOWEN HEART T6



SIRE: NKLJ81 KANSAS EVIDENTLY J81

MID-MAY 2019 ANGUS AUSTRALIA BREEDPLAN

CED	CEM	GL	BW	200d	400d	600d	MCW	Milk	SS	CWT	EMA	Rib	Rump	RBY	IMF	SELECTION INDEXES			
																ABI	Dom.	Grain	Grass
-6.7	-8.0	+1.3	+7.3	+52	+89	+107	+87	+14	+3.4	+63	+7.0	-0.7	+0.7	+0.3	+2.7				
51%	50%	70%	74%	70%	69%	72%	65%	59%	62%	62%	61%	64%	61%	57%	60%	+\$104	+\$101	+\$112	+\$99

Traits Observed: CE,BWT,200WT,600WT,FAT,EMA,IMF,Genomics

Notes: A great volume soft & easy doing son of Evidently J81, if you want cattle with extra body depth you must except a little birth weight. Fourth son from Heart F103 to be offered at a Bowen Bull sale. EBVs rated within the breed top 3% scrotal, 14% 200d, 15% IMF & 20% EMA.

Purchaser: \$

LOT
46

PEAKES BOWEN GARTH N644 SV

HBR

Born: 25/8/17
Age: 23 mths

AMFU, NHFU, CAFU, DDFU

Tattoo: PEK N644 (T&F)

EVTN644

TE MANIA ULONG U41
TE MANIA AFRICA A217
TE MANIA JEDDA Y32
SIRE: VTMG67 TE MANIA GARTH G67
TE MANIA CANTON C138
TE MANIA MITTAGONG E28
TE MANIA MITTAGONG C900

HIGHLANDER OF STERN AB
BRAVEHEART OF STERN
STERN 3886

DAM: EVTJ739 PEAKES JESTRESS J739
MERRIDALE SENSATION T2
MERRIGRANGE JESTRESS V37
MERRIGRANGE JESTRESS P116+94



MID-MAY 2019 ANGUS AUSTRALIA BREEDPLAN

CED	CEM	GL	BW	200d	400d	600d	MCW	Milk	SS	CWT	EMA	Rib	Rump	RBY	IMF	SELECTION INDEXES			
																ABI	Dom.	Grain	Grass
-0.8	+0.4	-6.2	+4.3	+48	+87	+107	+85	+21	+2.7	+54	+6.7	+3.4	+4.3	-1.4	+2.6				
59%	58%	84%	74%	72%	70%	74%	68%	65%	67%	66%	64%	67%	66%	62%	64%	+\$121	+\$111	+\$124	+\$118

Traits Observed: GL, CE, BWT, 200WT, 600WT, EMA, IMF, Genomics

Notes: A complete bull with a long body sired by the popular Garth G67, his maternal brother sold in 2018 Bowen Bull Sale. This Angus bull had the highest rib, rump fat & IMF% at scanning. EBVs rated within the breed top 1% rib & rump fats, 8% milk, 13% scrotal, 15% gest.L., 18% IMF & 24% EMA & has moderate birth weight.

Purchaser: \$

LOT
47

PEAKES BOWEN GARTH N729 SV

HBR

Born: 29/7/17
Age: 23.5 mths

AMFU, NHFU, CAFU, DDFU, RGF

Tattoo: PEK N729 (T&F)

EVTN729

TE MANIA ULONG U41
TE MANIA AFRICA A217
TE MANIA JEDDA Y32
SIRE: VTMG67 TE MANIA GARTH G67
TE MANIA CANTON C138
TE MANIA MITTAGONG E28
TE MANIA MITTAGONG C900

WAIMATA E230
MILWILLAH LAD E158
TE MANIA MITTAGONG X114

DAM: EVTH579 PEAKES PINNACLE H579
MILWILLAH ULTRAVOX B100
PEAKES PINNACLE E72
LAWSON'S PINNACLE X1227



MID-MAY 2019 ANGUS AUSTRALIA BREEDPLAN

CED	CEM	GL	BW	200d	400d	600d	MCW	Milk	SS	CWT	EMA	Rib	Rump	RBY	IMF	SELECTION INDEXES			
																ABI	Dom.	Grain	Grass
+0.2	+0.9	-6.3	+6.4	+53	+94	+123	+111	+24	+4.4	+52	+6.7	+2.7	+3.1	-0.4	+2.9				
57%	57%	72%	72%	71%	70%	72%	67%	64%	66%	65%	63%	66%	64%	60%	63%	+\$152	+\$125	+\$171	+\$138

Traits Observed: 200WT, 600WT, FAT, EMA, IMF, Genomics

Notes: High volume sire with extra spring of rib & a great temperament. This Garth son has outstanding data that speaks for itself, with 14 of his EVBs ranging from being in the top 1% to 14% of the breed. Maternal brother sold in 2018 Bowen Bull sale \$12,000.

Purchaser: \$

LOT
48

PEAKES BOWEN BRAVEHEART N762 PV

HBR
EVTN762

Born: 1/9/17
Age: 22.5 mths

AMFU, NHFU, CAFU, DDC

Tattoo: PEK N762 (T&F)

TE MANIA UNLIMITED U3271
HIGHLANDER OF STERN AB
STERN 2664

SIRE: NZE1217000784 BRAVEHEART OF STERN

STERN 947
STERN 3886
STERN 1486

TE MANIA YORKSHIRE Y437
TE MANIA BERKLEY B1
TE MANIA LOWAN Z53

DAM: EVTH692 PEAKES ANNIE H692

BON VIEW NEW DESIGN 1407
KANSAS ANNIE Y18
AMAROO EXPO ANNIE U020



MID-MAY 2019 ANGUS AUSTRALIA BREEDPLAN

CED	CEM	GL	BW	200d	400d	600d	MCW	Milk	SS	CWT	EMA	Rib	Rump	RBY	IMF	SELECTION INDEXES			
																ABI	Dom.	Grain	Grass
+2.6	+1.3	-7.4	+3.4	+44	+79	+103	+76	+16	+2.2	+54	+8.4	+1.5	+1.2	+0.2	+2.3				
60%	59%	72%	72%	72%	71%	71%	68%	65%	67%	66%	65%	67%	65%	63%	64%	+\$127	+\$116	+\$133	+\$123

Traits Observed: 200WT,600WT,FAT,EMA,IMF,Genomics

Notes: This Braveheart son is soft & thick with excellent shape to his muscle full brother sold in 2018 Bowen Bull Sale \$13,000, maternal brother M794 retained at Bowen for use in our stud. Dam Annie H692 is in our donor program. EBVs rated within the breed top 8% EMA, 10% rib fat, 15% rump fat. Great IMF, low birth, short gestation & good \$ indexes.

Purchaser: \$

LOT
49

PEAKES BOWEN BRAVEHEART N707 PV

HBR
EVTN707

Born: 14/9/17
Age: 22 mths

AMFU, NHFU, CAFU, DDF

Tattoo: PEK N707 (T&F)

HIGHLANDER OF STERN AB
BRAVEHEART OF STERN
STERN 3886

SIRE: EVTJ634 PEAKES BRAVEHEART J634

MYTTY IN FOCUS
PEAKES CLEMYNTYNE E16
BOWEN CLEMYNTYNE W15

PAPA EQUATOR 2928
ARDROSSAN EQUATOR A241
ARDROSSAN PRINCESS W38

DAM: EVTG17 PEAKES NUMERAL G17

MILLAH MURRAH NEW DESIGN U68
BOWEN NUMERAL Y46
MORDALLUP NUMERAL P256+94



MID-MAY 2019 ANGUS AUSTRALIA BREEDPLAN

CED	CEM	GL	BW	200d	400d	600d	MCW	Milk	SS	CWT	EMA	Rib	Rump	RBY	IMF	SELECTION INDEXES			
																ABI	Dom.	Grain	Grass
+1.3	-0.5	-5.1	+5.8	+51	+88	+122	+125	+16	+2.4	+73	+6.1	-3.0	-3.5	+2.3	+1.0				
48%	49%	71%	72%	68%	65%	69%	63%	57%	59%	60%	58%	61%	59%	55%	57%	+\$109	+\$107	+\$113	+\$109

Traits Observed: BWT,200WT,600WT,FAT,EMA,IMF,Genomics

Notes: A very safe sound bull with excellent structure, softness & doing ability. Braveheart N707 is a natural calf from donor dam Numeral G17, she has had sons selling to \$14,000 she is a terrific female with excellent structure & softness. EBVs rated within the breed top 2% RBY, 4% Mat. cow wt., 11% carc.wt., 16% 600d & 18% 200d.

Purchaser: \$

LOT
50

PEAKES BOWEN REGENT N534^{SV}

HBR

Born: 16/7/17
Age: 24 mths

AMFU, NHFU, RGF, CA8%, DDFU

Tattoo: PEK N534 (T&F)

EVTN534

RENNYLEA XPONENTIAL X555
TE MANIA AMBASSADOR A134
TE MANIA LOWAN Y211

SIRE: BNAD145 TUWHARETOA REGENT D145

YTHANBRAE HENRY VIII U8
LAWSONS HENRY VIII Y5
YTHANBRAE DIRECTION T270

MYTTY IN FOCUS
MILWILLAH IN FOCUS B115
MILWILLAH BARUNAH Z18

DAM: EVTE78 PEAKES ABIGAIL E78

DSK HU X-TRA STRENGTH X4
BOWEN ABIGAIL B13
BOWEN ABIGAIL X31



MID-MAY 2019 ANGUS AUSTRALIA BREEDPLAN

CED	CEM	GL	BW	200d	400d	600d	MCW	Milk	SS	CWT	EMA	Rib	Rump	RBV	IMF	SELECTION INDEXES			
+0.5	-2.4	-3.0	+3.9	+44	+76	+108	+96	+16	+0.9	+73	+4.7	+0.4	+0.1	-0.1	+2.7	ABI	Dom.	Grain	Grass
60%	60%	72%	75%	72%	71%	75%	71%	67%	67%	67%	66%	69%	67%	65%	65%	+\$119	+\$103	+\$132	+\$112

Traits Observed: CE,BWT,200WT,600WT,FAT,EMA,IMF,Genomics

Notes: A great combination of brilliant cow families combined with the legendary Regent D145. Dam Abigail E78 has been a consistent breeder this is the fourth son to be offered at a Bowen Bull sale, many daughters retained in stud. This fellow had the equal second highest rib fat scan when we scanned our Angus bulls. EBVs rated top 11% carc.wt & top 15% IMF.

Purchaser: \$

LOT
51

PEAKES BOWEN EVIDENTLY N705^{SV}

HBR

Born: 1/8/17
Age: 23.5 mths

AMFU, NHF, CAFU, DDFU

Tattoo: PEK N705 (T&F)

EVTN705

TE MANIA BARTEL B219
DUNOON EVIDENT E614
DUNOON ELSA B681

SIRE: NKLJ81 KANSAS EVIDENTLY J81

B C MARATHON 7022
KANSAS ANNIE E109
KANSAS ANNIE X164

C A FUTURE DIRECTION 5321
ARDROSSAN DIRECTION W109
ARDROSSAN WILCOOLA Q71+95

DAM: EVTD52 PEAKES LULU D52

WHITESTONE WIDESPREAD MB
BOWEN LULU W27
ABERDONIAN LULU R13



MID-MAY 2019 ANGUS AUSTRALIA BREEDPLAN

CED	CEM	GL	BW	200d	400d	600d	MCW	Milk	SS	CWT	EMA	Rib	Rump	RBV	IMF	SELECTION INDEXES			
-3.1	-3.9	-5.3	+6.9	+51	+87	+121	+111	+16	+3.2	+66	+6.9	-0.1	+0.1	+1.2	+0.9	ABI	Dom.	Grain	Grass
52%	51%	71%	75%	71%	70%	73%	67%	61%	63%	63%	62%	65%	63%	58%	61%	+\$113	+\$102	+\$112	+\$112

Traits Observed: CE,BWT,200WT,600WT,FAT,EMA,IMF,Genomics

Notes: A great type of bull with plenty of volume & weight for age. If you like deep bodied cows & progeny you must not be too hard on birth weight but keep your gestation short like this bull. Dam from the top performing Lulu cow family, Lulu D52 has had four sons selling at Bowen bull sales & has daughters retained in stud. EBVs rated within the breed top 4% scrotal, 14% mat.cow wt., 17% 600d, 20% RBV & 21% EMA.

Purchaser: \$

LOT
52

PEAKES BOWEN GARTH N715 SV

HBR

Born: 22/7/17
Age: 24 mths

AMFU, NHFU, CA15%, DDF

Tattoo: PEK N715 (T&F)

EVTN715

TE MANIA ULONG U41
TE MANIA AFRICA A217
TE MANIA JEDDA Y32
SIRE: VTMG67 TE MANIA GARTH G67
TE MANIA CANTON C138
TE MANIA MITTAGONG E28
TE MANIA MITTAGONG C900

HOFF ULTRA S C 108
DSK HU X-TRA STRENGTH X4
DSK PM PANDA R3
DAM: BPKB13 BOWEN ABIGAIL B13
MILLAH MURRAH NEW DESIGN U68
BOWEN ABIGAIL X31
ABERDONIAN ABIGAIL R8



MID-MAY 2019 ANGUS AUSTRALIA BREEDPLAN

CED	CEM	GL	BW	200d	400d	600d	MCW	Milk	SS	CWT	EMA	Rib	Rump	RBV	IMF	SELECTION INDEXES			
+1.4	+2.0	-5.3	+4.7	+48	+90	+123	+101	+24	+3.1	+56	+4.6	-0.7	-1.1	+0.8	+2.6	ABI	Dom.	Grain	Grass
58%	57%	71%	75%	72%	70%	75%	70%	67%	67%	66%	63%	66%	65%	61%	63%	+\$132	+\$117	+\$148	+\$125

Traits Observed: CE,BWT,200WT,600WT,FAT,EMA,IMF,Genomics

Notes: Maternal brother to sire Peakes Gabba K556 purchased by Mountain Valley Angus stud for the top price of \$30,000 at the 2016 Bowen Bull Sale. This son is great type with an excellent profile from a proven cow family. All \$ indexes top 25% or better, EBVs rated within the breed top 3% milk, 5% scrotal, 14% 600d & 18% IMF.

Purchaser: \$

LOT
53

PEAKES BOWEN GENESIS N566 SV

HBR

Born: 6/8/17
Age: 23.5 mths

AMFU, NHFU, CAFU, DDF

Tattoo: PEK N566 (T&F)

EVTN566

TE MANIA YORKSHIRE Y437
TE MANIA BERKLEY B1
TE MANIA LOWAN Z53
SIRE: SMPG357 PATHFINDER GENESIS G357
ARDROSSAN DIRECTION W109
PATHFINDER DIRECTION D245
PATHFINDER ADAVALE A433

TE MANIA AMBASSADOR A134
TUWHARETOA REGENT D145
LAWSONS HENRY VIII Y5

DAM: EVTK705 PEAKES ANNIE K705
BON VIEW NEW DESIGN 1407
KANSAS ANNIE Y18
AMAROO EXPO ANNIE U020



MID-MAY 2019 ANGUS AUSTRALIA BREEDPLAN

CED	CEM	GL	BW	200d	400d	600d	MCW	Milk	SS	CWT	EMA	Rib	Rump	RBV	IMF	SELECTION INDEXES			
+0.7	-0.1	-3.1	+5.6	+57	+98	+127	+118	+20	+4.3	+82	+11.7	+1.5	+1.3	+1.2	+2.6	ABI	Dom.	Grain	Grass
57%	55%	84%	75%	72%	70%	73%	68%	63%	67%	65%	65%	67%	65%	61%	64%	+\$154	+\$133	+\$172	+\$144

Traits Observed: GL,CE,BWT,200WT,600WT,FAT,EMA,IMF,Genomics

Notes: Genesis N566 is an outstanding type that catches your eye, it is rare to have the combination of excellent data & phenotype in the one package. His pedigree contains some of the breeds best sire & cow family lines. Excellent data rating on this young sire, EBVs ranging from 1 to 20% for the 16 EBVs displayed.

Purchaser: \$

LOT
54

PEAKES BOWEN KURRAJONG N661^{SV}

HBR
EVTN661

Born: 15/8/17
Age: 23 mths

AMFU, NHFU, CAFU, DDFU

Tattoo: PEK N661 (T&F)

BOOROOMOOKA UNDERTAKEN Y145
RENNYLEA EDMUND E11
LAWSONS HENRY VIII Y5

SIRE: CSWK18 MURDEDUKE KURRAJONG K18

ARDROSSAN ADMIRAL A2
VERMONT NANNY D354
VERMONT VICKY X189

B C MARATHON 7022
BULLIAC DE CASTELLA D1
BULLIAC LORNA A1

DAM: EVTF90 PEAKES MONA F90

ARDROSSAN DIRECTION W109
BOWEN MONA B77
BOWEN MONA S10



MID-MAY 2019 ANGUS AUSTRALIA BREEDPLAN

CED	CEM	GL	BW	200d	400d	600d	MCW	Milk	SS	CWT	EMA	Rib	Rump	RBY	IMF	SELECTION INDEXES			
																ABI	Dom.	Grain	Grass
+0.7	-1.6	-8.0	+4.8	+45	+75	+105	+95	+16	+1.9	+65	+8.5	+1.2	+0.1	+0.5	+2.2				
46%	46%	67%	73%	69%	66%	71%	64%	59%	60%	60%	58%	62%	59%	55%	57%	+\$118	+\$105	+\$126	+\$113

Traits Observed: CE,BWT,200WT,600WT,FAT,EMA,IMF,Genomics

Notes: A common-sense cattleman's type of bull, with sound structure & is easy doing. His pedigree includes the breed legends Edmund , Admiral & Direction W109.Dam Mona F90 has produced two sons selling at previous Bowen Bull sales. EBVs rated within the breed top 4% Gest.L & 7% EMA. Good fats & IMF.

Purchaser: \$

LOT
55

PEAKES BOWEN EVIDENTLY N626^{SV}

HBR
EVTN626

Born: 15/8/17
Age: 23 mths

AMFU, NHFU, CAFU, DDFU, RGF

Tattoo: PEK N626 (T&F)

TE MANIA BARTEL B219
DUNOON EVIDENT E614
DUNOON ELSA B681

SIRE: NKLJ81 KANSAS EVIDENTLY J81

B C MARATHON 7022
KANSAS ANNIE E109
KANSAS ANNIE X164

MYTTY IN FOCUS
MILWILLAH IN FOCUS B115
MILWILLAH BARUNAH Z18

DAM: EVTG76 PEAKES ABIGAIL G76

ARDROSSAN DIRECTION W109
PEAKES ABIGAIL D88
BOWEN ABIGAIL S6



MID-MAY 2019 ANGUS AUSTRALIA BREEDPLAN

CED	CEM	GL	BW	200d	400d	600d	MCW	Milk	SS	CWT	EMA	Rib	Rump	RBY	IMF	SELECTION INDEXES			
																ABI	Dom.	Grain	Grass
-1.1	-4.7	-3.0	+5.8	+51	+90	+117	+107	+19	+4.7	+71	+6.2	+0.4	+1.8	+0.3	+2.2				
50%	48%	68%	74%	70%	68%	72%	67%	58%	61%	61%	60%	64%	61%	56%	59%	+\$133	+\$115	+\$145	+\$123

Traits Observed: CE,BWT,200WT,600WT,FAT,EMA,IMF,Genomics

Notes: A real eye catcher, so much volume with an attractive silk skin. It is hard to find a bull of this quality with the data to match. Full brother sold in 2018 Bowen Bull sale \$10,000. EBVs rated within the breed top 7% rump fat, top 25% or better for 200 to 600d wts, mat.cow wt. & carc.wt. Good EMA, IMF & \$ indexes.

Purchaser: \$

LOT
56

PEAKES BOWEN GARTH N738 SV

HBR
EVTN738

Born: 13/7/17
Age: 24 mths

AMF, NHF, CAF, DDC

Tattoo: PEK N738 (T&F)

TE MANIA ULONG U41
TE MANIA AFRICA A217
TE MANIA JEDDA Y32
SIRE: VTMG67 TE MANIA GARTH G67
TE MANIA CANTON C138
TE MANIA MITTAGONG E28
TE MANIA MITTAGONG C900

B T ULTRAVOX 297E
MILWILLAH ULTRAVOX B100
TE MANIA JEDDA X66
DAM: EVTH670 PEAKES NUMERAL H670
ARDROSSAN DIRECTION W109
PEAKES NUMERAL D68
BOWEN NUMERAL Y46



SIRE: VTMG67 TE MANIA GARTH G67

MID-MAY 2019 ANGUS AUSTRALIA BREEDPLAN

CED	CEM	GL	BW	200d	400d	600d	MCW	Milk	SS	CWT	EMA	Rib	Rump	RBV	IMF	SELECTION INDEXES			
-0.2	+0.9	-5.1	+6.7	+60	+106	+147	+139	+23	+3.5	+73	+2.9	-1.3	-1.9	+0.2	+2.7	ABI	Dom.	Grain	Grass
58%	58%	72%	75%	72%	71%	74%	69%	66%	66%	66%	64%	67%	65%	61%	64%	+\$145	+\$121	+\$170	+\$133

Traits Observed: CE,BWT,200WT,600WT,FAT,EMA,IMF,Genomics

Notes: This sire certainly covers some ground, he is long, thick & powerful, with an outstanding data set, he had the heaviest weight for his mob when last weighed. EBVs rated within the breed top 3% or better for 200 to 600d, mat.cow wt.,milk,scrotal, 10% carc.wt, 15% IMF. All \$ indexes in the top 15% or better.

Purchaser: \$

LOT
57

PEAKES BOWEN GARTH N538 SV

HBR
EVTN538

Born: 21/7/17
Age: 24 mths

AMF, NHF, CAF, DDF

Tattoo: PEK N538 (T&F)

TE MANIA ULONG U41
TE MANIA AFRICA A217
TE MANIA JEDDA Y32
SIRE: VTMG67 TE MANIA GARTH G67
TE MANIA CANTON C138
TE MANIA MITTAGONG E28
TE MANIA MITTAGONG C900

HOFF LIMITED EDITION S C 594
DSK V6 ACHILLES A116
DSK PD HOT STUFF R36
DAM: EVTD18 PEAKES ABIGAIL D18
MILLAH MURRAH NEW DESIGN U68
BOWEN ABIGAIL Y42
BOWEN ABIGAIL U28

MID-MAY 2019 ANGUS AUSTRALIA BREEDPLAN

CED	CEM	GL	BW	200d	400d	600d	MCW	Milk	SS	CWT	EMA	Rib	Rump	RBV	IMF	SELECTION INDEXES			
-0.5	+0.0	-4.5	+5.7	+49	+87	+121	+121	+25	+2.5	+57	+8.3	+0.1	+0.1	+0.8	+1.4	ABI	Dom.	Grain	Grass
57%	56%	71%	75%	71%	70%	74%	70%	66%	65%	65%	62%	66%	64%	60%	62%	+\$121	+\$107	+\$126	+\$118

Traits Observed: CE,BWT,200WT,600WT,FAT,EMA,IMF,Genomics

Notes: Garth N538 is a high growth son of the popular Garth G67 sire and is as long as a train. Dam Abigail D18 has bred consistently with daughters retained in the stud, this is her third son to be offered at a Bowen Bull Sale. Ebvs rated within the breed top 1% milk, 6% Mat.cow wt, 8% EMA & top 25% or better for 200d wt & 600d wt.

Purchaser: \$

LOT
58

PEAKES BOWEN GARTH N815 SV

HBR

Born: 30/7/17
Age: 23.5 mths

AMFU, NHFU, RGF, CAFU, DDF

Tattoo: PEK N815 (T&F)

EVTN815

TE MANIA ULONG U41
TE MANIA AFRICA A217
TE MANIA JEDDA Y32
SIRE: VTMG67 TE MANIA GARTH G67
TE MANIA CANTON C138
TE MANIA MITTAGONG E28
TE MANIA MITTAGONG C900



WAIMATA E230
MILWILLAH LAD E158
TE MANIA MITTAGONG X114
DAM: EVTL587 PEAKES BOWEN VICKY L587
N.E.D HENRY VIII Z3
PEAKES VICKY D5
MOOKI RIVER VICKY S6

MID-MAY 2019 ANGUS AUSTRALIA BREEDPLAN

CED	CEM	GL	BW	200d	400d	600d	MCW	Milk	SS	CWT	EMA	Rib	Rump	RBV	IMF	SELECTION INDEXES			
+1.5	+1.1	-8.5	+5.4	+54	+102	+136	+127	+21	+1.8	+66	+8.3	-1.4	-3.1	+1.2	+3.2	ABI	Dom.	Grain	Grass
57%	57%	84%	74%	72%	70%	72%	68%	64%	66%	66%	64%	67%	65%	61%	64%	+\$159	+\$133	+\$191	+\$142

Traits Observed: GL,CE,BWT,200WT,600WT,FAT,EMA,IMF,Genomics

Notes: Long bodied sire from the popular TeMania Garth G67 sire with short gestation, excellent growth & weight data with IMF & EMA in the top 8% or better. All \$ indexes top 2% or better.

Purchaser: \$

LOT
59

PEAKES BOWEN KURRAJONG N631 SV

HBR

Born: 14/8/17
Age: 23 mths

AMFU, NHFU, CAFU, DDFU

Tattoo: PEK N631 (T&F)

EVTN631

BOOROOMOOKA UNDERTAKEN Y145
RENNYLEA EDMUND E11
LAWSONS HENRY VIII Y5
SIRE: CSWK18 MURDEDUKE KURRAJONG K18
ARDROSSAN ADMIRAL A2
VERMONT NANNY D354
VERMONT VICKY X189

TE MANIA UNLIMITED U3271
HIGHLANDER OF STERN AB
STERN 2664

DAM: EVTG18 PEAKES VICKY G18
ARDROSSAN DIRECTION W109
PEAKES VICKY B68
MOOKI RIVER VICKY S6

MID-MAY 2019 ANGUS AUSTRALIA BREEDPLAN

CED	CEM	GL	BW	200d	400d	600d	MCW	Milk	SS	CWT	EMA	Rib	Rump	RBV	IMF	SELECTION INDEXES			
+0.3	-1.9	-2.0	+5.1	+40	+73	+100	+92	+15	+1.8	+57	+9.6	+1.2	+0.3	+1.4	+1.1	ABI	Dom.	Grain	Grass
49%	49%	68%	73%	69%	66%	71%	65%	59%	60%	61%	59%	63%	59%	56%	58%	+\$116	+\$106	+\$117	+\$113

Traits Observed: CE,BWT,200WT,600WT,FAT,EMA,IMF,Genomics

Notes: A no nonsense type of sire with a pedigree stacked full of breed greats. The Highlander of Stern cows are rock solid matrons. Maternal brother sold in 2017 Bowen Bull sale \$13,000. EBVs rated within the breed top 3% EMA, 13% RBV & 15% Rib fat.

Purchaser: \$

LOT
60

PEAKES BOWEN REGENT N699 SV

HBR
EVTN699

Born: 27/7/17
Age: 23.5 mths

AMFU, NHFU, CAFU, DDFU

Tattoo: PEK N699 (T&F)

RENNYLEA XPONENTIAL X555
TE MANIA AMBASSADOR A134
TE MANIA LOWAN Y211

SIRE: BNAD145 TUWHARETOA REGENT D145

YTHANBRAE HENRY VIII U8
LAWSONS HENRY VIII Y5
YTHANBRAE DIRECTION T270

CONNEALY DATELINE
VERMILION DATELINE 7078
VERMILION BLACKBIRD 5044

DAM: BPKB69 BOWEN LULU B69

G T MAXIMUM
ABERDONIAN LULU R13
CALLEEN LULU L13+91



SIRE: BNAD145 TUWHARETOA REGENT D145

MID-MAY 2019 ANGUS AUSTRALIA BREEDPLAN

CED	CEM	GL	BW	200d	400d	600d	MCW	Milk	SS	CWT	EMA	Rib	Rump	RBY	IMF	SELECTION INDEXES			
																ABI	Dom.	Grain	Grass
-4.6	-5.1	-1.7	+7.8	+46	+82	+113	+116	+11	+1.6	+71	+10.1	-1.2	-2.5	+2.0	+3.5				
62%	62%	85%	76%	73%	71%	75%	70%	69%	67%	68%	67%	70%	68%	66%	67%	+\$134	+\$112	+\$166	+\$117

Traits Observed: GL,CE,BWT,200WT,600WT,FAT,EMA,IMF,Genomics

Notes: It is hard to find a better Regent D145 son with the muscle expression this boy has, it is rare to find the combination of his excellent high yielding carcass, combined with high marbling & not losing any of his soft easy doing qualities. From the consistent female line of the Lulu cow family. Good \$ indexes, EBVs rated within the breed top 2% EMA, 3% IMF, 4% RBY, 9% Mat.cow.wt. & 14% Carc.wt.

Purchaser: \$

LOT
61

PEAKES BOWEN EVIDENTLY N573 SV

HBR
EVTN573

Born: 16/8/17
Age: 23 mths

AMFU, NHFU, CAFU, DDFU

Tattoo: PEK N573 (T&F)

TE MANIA BARTEL B219
DUNOON EVIDENT E614
DUNOON ELSA B681

SIRE: NKLJ81 KANSAS EVIDENTLY J81

B C MARATHON 7022
KANSAS ANNIE E109
KANSAS ANNIE X164

HIGHLANDER OF STERN AB
BRAVEHEART OF STERN
STERN 3886

DAM: EVTJ664 PEAKES JESTRESS J664

MERRIDALE SENSATION T2
MERRIGRANGE JESTRESS V37
MERRIGRANGE JESTRESS P116+94



Kansas Evidently J81

SIRE: NKLJ81 KANSAS EVIDENTLY J81

MID-MAY 2019 ANGUS AUSTRALIA BREEDPLAN

CED	CEM	GL	BW	200d	400d	600d	MCW	Milk	SS	CWT	EMA	Rib	Rump	RBY	IMF	SELECTION INDEXES			
																ABI	Dom.	Grain	Grass
-6.2	-6.7	-2.2	+7.4	+45	+78	+110	+104	+21	+3.2	+60	+6.6	-2.6	-1.6	+1.9	+1.8				
52%	50%	68%	74%	70%	68%	72%	65%	59%	62%	61%	60%	63%	60%	56%	59%	+\$95	+\$89	+\$102	+\$92

Traits Observed: CE,BWT,200WT,600WT,FAT,EMA,Genomics

Notes: Grand dam donor Jestress V37 a prolific breeding female deep bodied, soft & easy doing. With fourteen sons selling at previous Bowen Bull Sales & many daughters retained. EBVs rated within the breed top 10% or better milk, scrotal & RBY, top 25% EMA.

Purchaser: \$

LOT
62

PEAKES BOWEN REALITY N526 SV

HBR
EVTN526

Born: 17/7/17
Age: 24 mths

Tattoo: PEK N526 (T&F)

SCHURRTOP REALITY X723
MATAURI REALITY 839
MATAURI 06663

SIRE: EVTK695 PEAKES REALITY K695
ARDROSSAN EQUATOR A241
PEAKES RUTH H567
PEAKES RUTH C62

CONNEALY WHITMAN
CONNEALY ALL AROUND
ENTRUST OF CONANGA 804

DAM: EVTJ740 PEAKES NEW DESIGN J740
BON VIEW NEW DESIGN 1107
LAWSONS NEW DESIGN 1407 Z1003
LAWSONS PAYLOAD W481

WITHDRAWN

MID-MAY 2019 ANGUS AUSTRALIA BREEDPLAN

CED	CEM	GL	BW	200d	400d	600d	MCW	Milk	SS	CWT	EMA	Rib	Rump	RBV	IMF	SELECTION INDEXES			
+0.3	+1.0	-4.2	+7.5	+58	+100	+134	+143	+13	+2.5	+78	+5.4	-0.9	-1.7	+0.9	+2.0	ABI	Dom.	Grain	Grass
47%	47%	69%	72%	67%	64%	70%	63%	54%	58%	58%	55%	59%	56%	52%	55%	+\$118	+\$112	+\$128	+\$116

Traits Observed: CE,BWT,200WT,600WT,FAT,EMA,IMF,Genomics

Notes: Outstanding Peakes Reality son. Exhibits growth with style & softness weighing the second heaviest when we last weighed this mob & one of the heaviest at weaning. Dominant cow families a feature with this fellow. EBVs rated top 5% or better 200, 400,600d & Mat. Cow wt., carcass wt. good IMF.

Purchaser: \$

LOT
63

PEAKES BOWEN LAD N646 SV

HBR
EVTN646

Born: 17/7/17
Age: 24 mths

AMFU, NHFU, CAFU, DDFU

Tattoo: PEK N646 (T&F)

WAIMATA LAD C78
WAIMATA E230
WAIMATA H920

SIRE: NJWE158 MILWILLAH LAD E158
C A FUTURE DIRECTION 5321
TE MANIA MITTAGONG X114
TE MANIA MITTAGONG V1

LEACHMAN RIGHT TIME
BT RIGHT TIME 24J
SITZ EVERELDA ENTENSE 1905

DAM: EVTE32 PEAKES LULU E32
YTHANBRAE PRECISION U28
BOWEN LULU Z42
BOWEN LULU W13



MID-MAY 2019 ANGUS AUSTRALIA BREEDPLAN

CED	CEM	GL	BW	200d	400d	600d	MCW	Milk	SS	CWT	EMA	Rib	Rump	RBV	IMF	SELECTION INDEXES			
-1.4	-3.5	-3.8	+6.7	+41	+76	+106	+89	+11	+0.9	+54	+5.7	-0.2	-0.9	+0.3	+1.8	ABI	Dom.	Grain	Grass
52%	52%	73%	75%	71%	69%	74%	68%	63%	63%	65%	63%	66%	64%	60%	62%	+\$108	+\$97	+\$115	+\$104

Traits Observed: CE,BWT,200WT,600WT,FAT,EMA,IMF,Genomics

Notes: Lad E158 son with that typical Lad sound profile, tight sheath & big testicles. Third son from Lulu E32 to be offered at a Bowen bull sale, the Right Time 24J females are good sound breeders.

Purchaser: \$

LOT
64

PEAKES BOWEN GARTH N675 SV

HBR
EVTN675

Born: 2/8/17
Age: 23.5 mths

AMFU, NHFU, RGF, CAFU, DDFU

Tattoo: PEK N675 (T&F)

TE MANIA ULONG U41
TE MANIA AFRICA A217
TE MANIA JEDDA Y32
SIRE: VTMG67 TE MANIA GARTH G67
TE MANIA CANTON C138
TE MANIA MITTAGONG E28
TE MANIA MITTAGONG C900

MYTTY IN FOCUS
MILWILLAH IN FOCUS B115
MILWILLAH BARUNAH Z18
DAM: EVTE104 PEAKES NUMERAL E104
BASIN MAX 602C
BOWEN NUMERAL B2
BOWEN NUMERAL X24



MID-MAY 2019 ANGUS AUSTRALIA BREEDPLAN

CED	CEM	GL	BW	200d	400d	600d	MCW	Milk	SS	CWT	EMA	Rib	Rump	RBV	IMF	SELECTION INDEXES			
+2.4	+1.9	-8.6	+2.6	+48	+80	+104	+85	+19	+1.5	+55	+4.2	+1.4	+1.6	-1.6	+4.2	ABI	Dom.	Grain	Grass
58%	58%	85%	75%	73%	71%	75%	70%	67%	67%	67%	65%	68%	66%	62%	65%	+\$133	+\$114	+\$154	+\$121

Traits Observed: GL,CE,BWT,200WT,600WT,FAT,EMA,IMF,Genomics

Notes: A correct long bodied young sire with top of the tree data, from a strong cow family. Maternal brother sold for \$14,500 in 2015 Bowen Bull sale. Good \$ indexes, EBVs rated within the breed top 1% IMF, 3% gest.L., top 16% of better B.W., milk, rib & rump fats.

Purchaser: \$

LOT
65

PEAKES BOWEN REGENT N588 SV

HBR
EVTN588

Born: 20/7/17
Age: 24 mths

AMFU, NHFU, CAFU, DDF

Tattoo: PEK N588 (T&F)

RENNYLEA XPONENTIAL X555
TE MANIA AMBASSADOR A134
TE MANIA LOWAN Y211
SIRE: BNAD145 TUWHARETOA REGENT D145
YTHANBRAE HENRY VIII U8
LAWSONS HENRY VIII Y5
YTHANBRAE DIRECTION T270

BANQUET XPLANATION X060
BANQUET BUNDY B002
BLACK GOLD CHAMPAGNE J031+89
DAM: EVTD37 PEAKES NUMERAL D37
BON VIEW BANDO 598
BOWEN NUMERAL T11
MORDALLUP NUMERAL P256+94



MID-MAY 2019 ANGUS AUSTRALIA BREEDPLAN

CED	CEM	GL	BW	200d	400d	600d	MCW	Milk	SS	CWT	EMA	Rib	Rump	RBV	IMF	SELECTION INDEXES			
-1.0	-4.1	-3.9	+5.2	+50	+87	+114	+105	+15	+1.9	+80	+6.7	+0.0	-2.1	+0.5	+3.1	ABI	Dom.	Grain	Grass
60%	60%	74%	75%	72%	71%	75%	71%	67%	67%	67%	66%	69%	67%	65%	66%	+\$122	+\$110	+\$141	+\$112

Traits Observed: CE,BWT,200WT,600WT,FAT,EMA,IMF,Genomics

Notes: Impressive Regent D145 son. He is smooth, long & has high marbling from a consistent breeding female line. He was one of the heaviest bull calves at weaning. Dam Numeral D37 has had three sons selling at previous Bowen Bull sales to a top of \$13,000. EBVs rated within the breed top 3% carc.wt, top 8% IMF.

Purchaser: \$

LOT
66

PEAKES BOWEN DOUBLE VISION N751 PV

HBR
EVTN751

Born: 9/9/17
Age: 22.5 mths

AMFU, NHC, CAFU, DDFU

Tattoo: PEK N751 (T&F)

BON VIEW NEW DESIGN 878
CONNEALY REFLECTION
HAPPY GRILL OF CONANGA 6260

SIRE: USA16748826 JINDRA DOUBLE VISION
HOFF LIMITED EDITION S C 594
HOFF RACHEL 8312 405
HOFF MISS EXPO S C 4223

C A FUTURE DIRECTION 5321
ARDROSSAN DIRECTION W109
ARDROSSAN WILCOOLA Q71+95

DAM: CCVB099 VERMONT LOWAN B099
B/R NEW DESIGN 036
TE MANIA LOWAN V475
TE MANIA LOWAN R426



DAM: CCVB099 VERMONT LOWAN B099

MID-MAY 2019 ANGUS AUSTRALIA BREEDPLAN

CED	CEM	GL	BW	200d	400d	600d	MCW	Milk	SS	CWT	EMA	Rib	Rump	RBY	IMF	SELECTION INDEXES			
																ABI	Dom.	Grain	Grass
+1.2	+2.0	-0.9	+5.5	+50	+89	+114	+102	+15	+1.0	+75	+6.4	-2.3	-3.6	+1.7	+0.9				
56%	54%	72%	72%	72%	70%	71%	67%	64%	67%	65%	64%	66%	63%	60%	62%	+\$111	+\$113	+\$112	+\$111

Traits Observed: 200WT,600WT,FAT,EMA,IMF,Genomics

Notes: Double Vision was one of the best sires we viewed while in the USA in 2014. Donor dam Lowan B99 is a terrific soft deep bodied cow with sons selling well at previous Bowen Bull Sales. EBVs rated within the breed top 7% RBY & 8% carc.wt. Good IMF,EMA & Growth wt. data.

Purchaser: \$

LOT
67

PEAKES BOWEN GARTH N735 SV

HBR
EVTN735

Born: 19/8/17
Age: 23 mths

AMFU, NHFU, CAFU, DDF

Tattoo: PEK N735 (T&F)

TE MANIA ULONG U41
TE MANIA AFRICA A217
TE MANIA JEDDA Y32

SIRE: VTMG67 TE MANIA GARTH G67
TE MANIA CANTON C138
TE MANIA MITTAGONG E28
TE MANIA MITTAGONG C900

YTHANBRAE HENRY VIII U8
N.E.D HENRY VIII Z3
KANSAS MONICA W67

DAM: EVTD71 PEAKES HEART D71
BEN NEVIS KNIGHT+90
BOWEN HEART S1
KANSAS HEART N60+93



SIRE: VTMG67 TE MANIA GARTH G67

MID-MAY 2019 ANGUS AUSTRALIA BREEDPLAN

CED	CEM	GL	BW	200d	400d	600d	MCW	Milk	SS	CWT	EMA	Rib	Rump	RBY	IMF	SELECTION INDEXES			
																ABI	Dom.	Grain	Grass
+0.1	+0.5	-4.6	+4.5	+46	+78	+96	+70	+21	+2.2	+42	+7.7	+0.3	+0.5	+0.7	+2.9				
57%	57%	70%	75%	72%	71%	75%	70%	66%	66%	66%	64%	67%	65%	61%	63%	+\$121	+\$115	+\$131	+\$114

Traits Observed: CE,BWT,200WT,600WT,FAT,EMA,IMF,Genomics

Notes: Garth N735 is long bodied with a moderate birth weight from the great Kansas Heart cow line. Maternal brothers sold well in previous Bowen Bull sales & has sisters retained in stud. EBVs rated within the breed top 12% IMF, 13% EMA, good fats & milk data.

Purchaser: \$

LOT
68

PEAKES BOWEN LAD N587^{SV}

HBR

Born: 15/8/17
Age: 23 mths

AMFU, NHF, RGF, CAFU, DDFU

Tattoo: PEK N587 (T&F)

EVTN587

WAIMATA E230
MILWILLAH LAD E158
TE MANIA MITTAGONG X114

SIRE: EVTK638 PEAKES LAD K638

MILWILLAH IN FOCUS B115
PEAKES NUMERAL E86
PEAKES NUMERAL C20

BT CROSSOVER 758N
SILVEIRAS CONVERSION 8064
EXG SARAS DREAM S609 R3

DAM: EVTJ659 PEAKES LOWAN J659

ARDROSSAN DIRECTION W109
VERMONT LOWAN B099
TE MANIA LOWAN V475



MID-MAY 2019 ANGUS AUSTRALIA BREEDPLAN

CED	CEM	GL	BW	200d	400d	600d	MCW	Milk	SS	CWT	EMA	Rib	Rump	RBY	IMF	SELECTION INDEXES			
																ABI	Dom.	Grain	Grass
+2.0	-1.7	-6.3	+5.5	+47	+80	+103	+89	+16	+2.4	+65	+8.7	-3.0	-2.7	+1.7	+2.2				
45%	46%	71%	72%	68%	65%	70%	63%	55%	58%	59%	57%	62%	59%	54%	57%	+\$120	+\$115	+\$132	+\$114

Traits Observed: CE,BWT,200WT,600WT,FAT,EMA,IMF,Genomics

Notes: A Lad K638 son from the famous Lowan cow family, grand dam donor Lowan B99 a powerful female with great depth & volume. Breedplan does not always recognise some of these great families but cattleman will. EBVs rated within the breed top 10% or better EMA & RBY.

Purchaser: \$

LOT
69

PEAKES BOWEN REGENT N663^{SV}

HBR

Born: 15/7/17
Age: 24 mths

AMFU, NHFU, CAFU, DDFU

Tattoo: PEK N663 (T&F)

EVTN663

RENNYLEA XPONENTIAL X555
TE MANIA AMBASSADOR A134
TE MANIA LOWAN Y211

SIRE: BNAD145 TUWHARETOA REGENT D145

YTHANBRAE HENRY VIII U8
LAWSONS HENRY VIII Y5
YTHANBRAE DIRECTION T270

TE MANIA UNLIMITED U3271
TE MANIA INFINITY 04 379 AB
TE MANIA 95102

DAM: EVTG63 PEAKES LEAH G63

ARDROSSAN DIRECTION W109
PEAKES LEAH D61
BOWEN LEAH Z11



MID-MAY 2019 ANGUS AUSTRALIA BREEDPLAN

CED	CEM	GL	BW	200d	400d	600d	MCW	Milk	SS	CWT	EMA	Rib	Rump	RBY	IMF	SELECTION INDEXES			
																ABI	Dom.	Grain	Grass
-2.3	-6.7	-2.4	+3.0	+40	+66	+83	+72	+15	+1.8	+59	+6.5	+0.9	+0.5	-0.4	+2.9				
61%	62%	74%	75%	73%	71%	75%	70%	67%	67%	68%	67%	70%	68%	66%	67%	+\$92	+\$90	+\$98	+\$88

Traits Observed: CE,BWT,200WT,600WT,FAT,EMA,IMF,Genomics

Notes: Dam Leah G63 has done it again with this long bodied soft Regent D145 son, two full brothers sold in the 2017 & 2018 Bowen Bull sales. EBVs rated within the breed top 12% IMF, good Birth Weight, EMA, rib & rump fats.

Purchaser: \$

LOT
70

PEAKES BOWEN LAD N651 SV

HBR

Born: 30/8/17
Age: 22.5 mths

AMFU, NHFU, RGF, CAFU, DDF

Tattoo: PEK N651 (T&F)

EVTN651

WAIMATA E230
MILWILLAH LAD E158
TE MANIA MITTAGONG X114

SIRE: EVTK638 PEAKES LAD K638

MILWILLAH IN FOCUS B115
PEAKES NUMERAL E86
PEAKES NUMERAL C20

TE MANIA INFINITY 04 379 AB
ARDROSSAN DEFINITIVE D230
ARDROSSAN MARBLE B287

DAM: EVTJ580 PEAKES LULU J580

ARDROSSAN DIRECTION W109
PEAKES LULU D48
BOWEN LULU Z26



MID-MAY 2019 ANGUS AUSTRALIA BREEDPLAN

CED	CEM	GL	BW	200d	400d	600d	MCW	Milk	SS	CWT	EMA	Rib	Rump	RBY	IMF	SELECTION INDEXES			
																ABI	Dom.	Grain	Grass
+2.8	-0.1	-9.1	+2.9	+42	+79	+109	+100	+15	+2.2	+62	+3.9	-0.3	-1.8	+0.0	+2.3	+116	+105	+129	+110
43%	43%	68%	72%	67%	65%	69%	62%	54%	57%	58%	57%	61%	58%	53%	56%				

Traits Observed: CE,BWT,200WT,600WT,FAT,EMA,IMF,Genomics

Notes: Compact sire with short gestation, low birth & good IMF, grand dam Lulu D48 produced many bulls selling in Bowen Bull sales. EBVs rated within the breed top 2% Gest. Length, 18% birth weight & top 25% IMF.

Purchaser: \$

LOT
71

PEAKES BERKLEY N842 PV

HBR

Born: 1/9/17
Age: 22.5 mths

AMFU, NHFU, CAFU, DDC

Tattoo: PEK N842 (T&F)

EVTN842

TE MANIA YORKSHIRE Y437
TE MANIA BERKLEY B1
TE MANIA LOWAN Z53

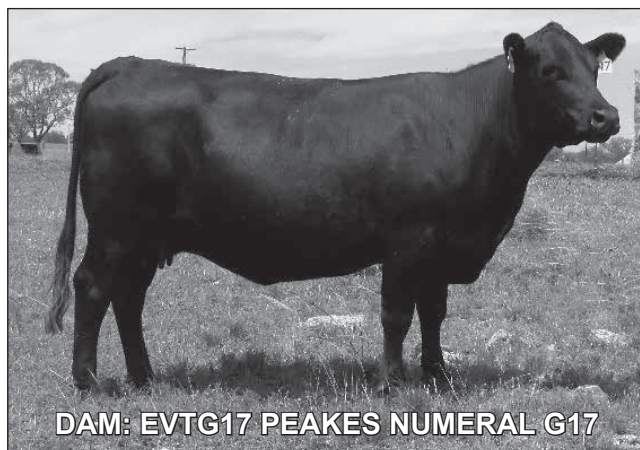
SIRE: NENJ179 KAROO B1 BERKLEY J179

KAROO 338 RIGHT TIME C22
KAROO WILCOOLA F143
KAROO WILCOOLA D257

PAPA EQUATOR 2928
ARDROSSAN EQUATOR A241
ARDROSSAN PRINCESS W38

DAM: EVTG17 PEAKES NUMERAL G17

MILLAH MURRAH NEW DESIGN U68
BOWEN NUMERAL Y46
MORDALLUP NUMERAL P256+94



MID-MAY 2019 ANGUS AUSTRALIA BREEDPLAN

CED	CEM	GL	BW	200d	400d	600d	MCW	Milk	SS	CWT	EMA	Rib	Rump	RBY	IMF	SELECTION INDEXES			
																ABI	Dom.	Grain	Grass
+3.1	+2.1	-7.0	+1.0	+40	+75	+104	+100	+20	+2.9	+60	+5.2	+0.2	+0.3	+0.0	+2.3	+116	+105	+125	+112
49%	50%	72%	70%	70%	68%	69%	64%	58%	63%	62%	61%	64%	61%	57%	59%				

Traits Observed: 200WT,600WT,FAT,EMA,IMF,Genomics

Notes: Very good Karoo Berkley son, free moving, sound & upstanding. He is a natural calf from donor dam Numeral G17, she has had sons selling to \$14,000. A terrific female with excellent structure & softness. Exceptional low birth & short gestation, good milk, IMF & fats.

Purchaser: \$

LOT
72

PEAKES BOWEN LAD N669^{SV}

HBR

Born: 28/7/17
Age: 23.5 mths

AMFU, NHFU, CAFU, DDF, RGF

Tattoo: PEK N669 (T&F)

EVTN669

WAIMATA E230
MILWILLAH LAD E158
TE MANIA MITTAGONG X114

SIRE: EVTK638 PEAKES LAD K638

MILWILLAH IN FOCUS B115
PEAKES NUMERAL E86
PEAKES NUMERAL C20

TC STOCKMAN
TC STOCKMAN 2164
TC RUBY 5087

DAM: EVTG154 PEAKES HEART G154

N.E.D HENRY VIII Z3
PEAKES HEART C61
KANSAS HEART R43



MID-MAY 2019 ANGUS AUSTRALIA BREEDPLAN

CED	CEM	GL	BW	200d	400d	600d	MCW	Milk	SS	CWT	EMA	Rib	Rump	RBY	IMF	SELECTION INDEXES			
																ABI	Dom.	Grain	Grass
+2.1	-0.2	-4.0	+4.6	+41	+67	+95	+84	+12	+2.3	+51	+4.5	-0.1	+0.4	+0.1	+1.2	+90	+91	+83	+95
46%	46%	68%	73%	67%	64%	70%	64%	56%	56%	58%	56%	60%	57%	53%	55%				

Traits Observed: CE,BWT,200WT,600WT,FAT,EMA,IMF,Genomics

Notes: Excellent length, smooth son of Lad K638 with correct structure & moderate frame, from the strong Kansas Heart female line.

Purchaser: \$

LOT
73

PEAKES BOWEN REALITY N601^{SV}

HBR

Born: 4/9/17
Age: 22.5 mths

AMF, NHF, CAF, DDF

Tattoo: PEK N601 (T&F)

EVTN601

SCHURRTOP REALITY X723
MATAURI REALITY 839
MATAURI 06663

SIRE: EVTK695 PEAKES REALITY K695

ARDROSSAN EQUATOR A241
PEAKES RUTH H567
PEAKES RUTH C62

TE MANIA AMBASSADOR A134
TUWHARETOA REGENT D145
LAWSONS HENRY VIII Y5

DAM: EVTK658 PEAKES NUMERAL K658

TE MANIA INFINITY 04 379 AB
PEAKES NUMERAL F44
PEAKES NUMERAL D68

MID-MAY 2019 ANGUS AUSTRALIA BREEDPLAN

CED	CEM	GL	BW	200d	400d	600d	MCW	Milk	SS	CWT	EMA	Rib	Rump	RBY	IMF	SELECTION INDEXES			
																ABI	Dom.	Grain	Grass
+0.9	-0.4	-2.3	+5.5	+58	+102	+139	+130	+17	+3.2	+83	+3.4	-0.1	-0.6	-0.6	+3.4	+146	+121	+172	+133
48%	49%	69%	72%	68%	65%	68%	62%	55%	58%	59%	57%	61%	58%	55%	57%				

Traits Observed: BWT,200WT,600WT,FAT,EMA,IMF,Genomics

Notes: High growth son of Peakes Reality with a silk skin & exceptional data, it is hard to combine phenotype & EBVs but this fellow has them both. He had the third highest EMA at scanning in the Angus bulls. Maternal brother sold in 2018 Bowen Bull sale \$13,000. EBVs rated within the breed top 5% or better 200 to 600d wts, carc.wt, mat.caw wt., scrotal & IMF.

Purchaser: \$

LOT
74

PEAKES BOWEN GARTH N722 SV

HBR

Born: 25/7/17
Age: 24 mths

AMFU, NHFU, CAFU, DDFU

Tattoo: PEK N722 (T&F)

EVTN722

TE MANIA ULONG U41
TE MANIA AFRICA A217
TE MANIA JEDDA Y32
SIRE: VTMG67 TE MANIA GARTH G67
TE MANIA CANTON C138
TE MANIA MITTAGONG E28
TE MANIA MITTAGONG C900

TE MANIA UNLIMITED U3271
HIGHLANDER OF STERN AB
STERN 2664

DAM: EVTG67 PEAKES DANDLOO G67
DSK V6 ACHILLES A116
PEAKES DANDLOO D70
BOWEN DANDLOO W1



MID-MAY 2019 ANGUS AUSTRALIA BREEDPLAN

CED	CEM	GL	BW	200d	400d	600d	MCW	Milk	SS	CWT	EMA	Rib	Rump	RBY	IMF	SELECTION INDEXES			
																ABI	Dom.	Grain	Grass
-1.4	-0.4	-6.5	+4.5	+47	+86	+108	+94	+24	+2.7	+56	+6.7	-0.3	+0.3	+1.1	+1.8				
58%	58%	73%	75%	71%	70%	74%	69%	65%	66%	65%	63%	66%	65%	61%	63%	+\$124	+\$115	+\$132	+\$118

Traits Observed: CE,BWT,200WT,600WT,FAT,EMA,IMF,Genomics

Notes: This young sire ticks a lot of boxes with his excellent temperament, body length from a real volume cow family. Good \$ indexes, EMA & RBY. EBVs rated within the breed top 3% milk, 13% scrotal & Gest. Length.

Purchaser: \$

LOT
75

PEAKES BOWEN REALITY N509 SV

HBR

Born: 24/6/17
Age: 25 mths

AMFU, NHFU, CAFU, DDF

Tattoo: PEK N509 (T&F)

EVTN509

SCHURR 77 1346 EXCEL
SCHURRTOP REALITY X723
SCHURRTOP 8019 V141
SIRE: NZE14647008839 MATAURI REALITY 839
TE MANIA ULONG U41
MATAURI 06663
MATAURI 04456 AB

TUWHARETOA REGENT D145
DUNOON GABBA G548
DUNOON BEEAC Z120

DAM: EVTK724 PEAKES LULU K724
WHITESTONE WIDESPREAD MB
BOWEN LULU W27
ABERDONIAN LULU R13



MID-MAY 2019 ANGUS AUSTRALIA BREEDPLAN

CED	CEM	GL	BW	200d	400d	600d	MCW	Milk	SS	CWT	EMA	Rib	Rump	RBY	IMF	SELECTION INDEXES			
																ABI	Dom.	Grain	Grass
+3.5	+3.2	-6.4	+1.8	+41	+72	+87	+92	+11	+2.7	+57	+3.1	+3.6	+3.2	-1.4	+2.0				
59%	58%	82%	73%	71%	70%	73%	68%	65%	67%	65%	64%	67%	65%	62%	64%	+\$107	+\$104	+\$107	+\$104

Traits Observed: GL,CE,BWT,200WT,600WT,FAT,EMA,IMF,Genomics

Notes: Excellent structure, quiet & easy doing from the powerful Lulu cow family. A true heifer bull, low birth & short gestation. EBVs rated top 1% rib & rump fats, top 6% low birth weight, top 13% gest. Length & scrotal.

Purchaser: \$

LOT
76

PEAKES BOEN KURRAJONG N678 SV

HBR
EVTN678

Born: 14/8/17
Age: 23 mths

AMFU, NHFU, CAFU, DDF, RGF

Tattoo: PEK N678 (T&F)

BOOROOMOOKA UNDERTAKEN Y145
RENNYLEA EDMUND E11
LAWSONS HENRY VIII Y5

SIRE: CSWK18 MURDEDUKE KURRAJONG K18

ARDROSSAN ADMIRAL A2
VERMONT NANNY D354
VERMONT VICKY X189

MYTTY IN FOCUS
MILWILLAH IN FOCUS B115
MILWILLAH BARUNAH Z18

DAM: EVTH612 PEAKES IN FOCUS H612

DSK V6 ACHILLES A116
PEAKES ABIGAIL D18
BOWEN ABIGAIL Y42

MID-MAY 2019 ANGUS AUSTRALIA BREEDPLAN

CED	CEM	GL	BW	200d	400d	600d	MCW	Milk	SS	CWT	EMA	Rib	Rump	RBV	IMF	SELECTION INDEXES			
+1.7	-2.0	-5.5	+6.3	+50	+86	+119	+117	+15	+2.2	+71	+5.7	-0.1	+0.2	+1.2	+1.4	ABI	Dom.	Grain	Grass
46%	47%	69%	72%	67%	65%	71%	65%	57%	58%	59%	56%	61%	58%	54%	56%	+\$129	+\$113	+\$136	+\$123

Traits Observed: CE,BWT,200WT,600WT,FAT,EMA,IMF,Genomics

Notes: A deep bodied soft easy doing son of Kurrajong K18, dam H612 has produced many daughters retained in Stud. Good \$ indexes, EBVs rated within the breed top 25% or better for 200d, 600d, mat.cow wt., carc.wt & RBV.

Purchaser: \$

LOT
77

PEAKES BOWEN GARTH N714 SV

HBR
EVTN714

Born: 16/7/17
Age: 24 mths

AMFU, NHC, CAFU, DDFU

Tattoo: PEK N714 (T&F)

TE MANIA ULONG U41
TE MANIA AFRICA A217
TE MANIA JEDDA Y32

SIRE: VTMG67 TE MANIA GARTH G67

TE MANIA CANTON C138
TE MANIA MITTAGONG E28
TE MANIA MITTAGONG C900

C A FUTURE DIRECTION 5321
ARDROSSAN DIRECTION W109
ARDROSSAN WILCOOLA Q71+95

DAM: EVTD34 PEAKES LULU D34

FAMOUS 7001
BOWEN LULU A55
ABERDONIAN LULU R13



MID-MAY 2019 ANGUS AUSTRALIA BREEDPLAN

CED	CEM	GL	BW	200d	400d	600d	MCW	Milk	SS	CWT	EMA	Rib	Rump	RBV	IMF	SELECTION INDEXES			
-2.0	-0.4	-2.6	+5.3	+46	+80	+99	+67	+25	+4.0	+51	+9.9	+0.7	+1.3	+0.8	+2.4	ABI	Dom.	Grain	Grass
60%	59%	73%	75%	73%	71%	75%	71%	67%	67%	67%	65%	68%	66%	63%	65%	+\$131	+\$118	+\$141	+\$122

Traits Observed: CE,BWT,200WT,600WT,FAT,EMA,IMF,Genomics

Notes: Garth N714 sired by the very popular TeMania Garth G67, he has terrific body length & a great nature from an outstanding cow family, he has two maternal brothers selling at Bowen Sales. Good \$ indexes & rib fat, EBVs rated within the breed top 1% scrotal, 2% EMA & Milk, 14% rump fat.

Purchaser: \$

**LOT
78**

PEAKES BOWEN GARTH N708^{SV}

HBR

Born: 20/7/17
Age: 24 mths

AMF, NHC, CAF, DDF

Tattoo: PEK N708 (T&F)

EVTN708

TE MANIA ULONG U41
TE MANIA AFRICA A217
TE MANIA JEDDA Y32
SIRE: VTMG67 TE MANIA GARTH G67
TE MANIA CANTON C138
TE MANIA MITTAGONG E28
TE MANIA MITTAGONG C900

TE MANIA BARTEL B219
DUNOON EVIDENT E614
DUNOON ELSA B681
DAM: EVTH619 PEAKES LULU H619
ARDROSSAN DIRECTION W109
PEAKES LULU D34
BOWEN LULU A55



SIRE: VTMG67 TE MANIA GARTH G67

MID-MAY 2019 ANGUS AUSTRALIA BREEDPLAN

CED	CEM	GL	BW	200d	400d	600d	MCW	Milk	SS	CWT	EMA	Rib	Rump	RBY	IMF	SELECTION INDEXES			
																ABI	Dom.	Grain	Grass
-3.5	-1.6	-0.5	+5.4	+46	+80	+95	+71	+22	+2.0	+44	+10.1	-0.2	+0.1	+1.1	+2.9				
59%	59%	74%	75%	72%	71%	74%	70%	66%	67%	67%	65%	68%	66%	62%	65%	+\$124	+\$115	+\$137	+\$114

Traits Observed: CE,BWT,200WT,600WT,FAT,EMA,IMF,Genomics

Notes: A very correct safe bull sire by the popular Garth G67, this young sire has a pedigree for muscle & marbling. Garth N708 has two maternal brothers selling Bowen Bull sales. Good \$ indexes & RBY, EBVs rated within the breed top 2% EMA, 6% milk & 12% IMF

Purchaser: \$

**LOT
79**

PEAKES BOWEN REGENT N634^{SV}

HBR

Born: 1/8/17
Age: 23.5 mths

AMFU, NHFU, CAFU, DDFU

Tattoo: PEK N634 (T&F)

EVTN634

RENNYLEA XPONENTIAL X555
TE MANIA AMBASSADOR A134
TE MANIA LOWAN Y211
SIRE: BNAD145 TUWHARETOA REGENT D145
YTHANBRAE HENRY VIII U8
LAWSONS HENRY VIII Y5
YTHANBRAE DIRECTION T270

HOFF LIMITED EDITION S C 594
DSK V6 ACHILLES A116
DSK PD HOT STUFF R36

DAM: EVTD87 PEAKES LULU D87
TC STOCKMAN 365
BOWEN LULU U14
CALLEN LULU L13+91



SIRE: BNAD145 TUWHARETOA REGENT D145

MID-MAY 2019 ANGUS AUSTRALIA BREEDPLAN

CED	CEM	GL	BW	200d	400d	600d	MCW	Milk	SS	CWT	EMA	Rib	Rump	RBY	IMF	SELECTION INDEXES			
																ABI	Dom.	Grain	Grass
-2.6	-4.4	-0.2	+6.2	+43	+71	+98	+87	+13	+1.2	+74	+8.1	-0.3	-2.0	+1.1	+2.2				
58%	59%	84%	75%	71%	70%	74%	70%	66%	66%	66%	65%	68%	66%	64%	64%	+\$99	+\$94	+\$107	+\$96

Traits Observed: GL,CE,BWT,200WT,600WT,FAT,EMA,IMF,Genomics

Notes: A very solid sound son of Regent D145 with a very long barrel. Maternal brother sold in 2014 Bowen Bull Sale. EBVs rated within the breed top 10% or better carc.wt, EMA with good IMF & RBY data.

Purchaser: \$

LOT
80

PEAKES BOWEN REALITY N80^{SV}

HBR
EVTN800

Born: 25/7/17
Age: 24 mths

AMF, NHF, CAF, DDF

Tattoo: PEK N800 (T&F)

SCHURR 77 1346 EXCEL
SCHURRTOP REALITY X723
SCHURRTOP 8019 V141

SIRE: NZE14647008839 MATAURI REALITY 839

TE MANIA ULONG U41
MATAURI 06663
MATAURI 04456 AB

CUDLOBE IN FOCUS 5S
CUDLOBE TOTAL FOCUS 6A
CUDLOBE EXQUISITE LADY 69Y

DAM: EVTL735 PEAKES BOWEN NUMERAL L735

MILWILLAH ULTRAVOX B100
PEAKES NUMERAL H670
PEAKES NUMERAL D68



SIRE: NZE14647008839 MATAURI REALITY 839

MID-MAY 2019 ANGUS AUSTRALIA BREEDPLAN

CED	CEM	GL	BW	200d	400d	600d	MCW	Milk	SS	CWT	EMA	Rib	Rump	RBY	IMF	SELECTION INDEXES			
																ABI	Dom.	Grain	Grass
+5.0	+4.5	-10.4	+1.2	+47	+88	+120	+112	+14	+3.2	+67	+1.8	+3.0	+1.8	-1.7	+2.4				
56%	56%	84%	73%	71%	69%	73%	67%	63%	65%	65%	63%	66%	64%	61%	63%	+\$123	+\$109	+\$130	+\$120

Traits Observed: GL,CE,BWT,200WT,600WT,FAT,EMA,IMF,Genomics

Notes: This long-bodied Reality son with excellent calving data will be perfect for heifers. EBVs rated within the breed top 1% Gest. L., rib fat, 3% Birth wt., 4% scrotal, rump fat 7%. Good growth data, IMF & \$ indexes.

Purchaser: \$

LOT
81

PEAKES BOWEN EVIDENTLEY N759^{SV}

HBR
EVTN759

Born: 18/8/17
Age: 23 mths

AMFU, NHFU, CAFU, DD17%

Tattoo: PEK N759 (T&F)

TE MANIA BARTEL B219
DUNOON EVIDENT E614
DUNOON ELSA B681

SIRE: NKLJ81 KANSAS EVIDENTLY J81

B C MARATHON 7022
KANSAS ANNIE E109
KANSAS ANNIE X164

ARDROSSAN ADMIRAL A2
DUNOON FOURMILE F464
DUNOON BEEAC Z120

DAM: EVTJ631 PEAKES PINNACLE J631

MILWILLAH ULTRAVOX B100
PEAKES PINNACLE F15
LAWSONS PINNACLE X1227



Kansas Evidently J81

SIRE: NKLJ81 KANSAS EVIDENTLY J81

MID-MAY 2019 ANGUS AUSTRALIA BREEDPLAN

CED	CEM	GL	BW	200d	400d	600d	MCW	Milk	SS	CWT	EMA	Rib	Rump	RBY	IMF	SELECTION INDEXES			
																ABI	Dom.	Grain	Grass
-3.4	-6.6	-1.3	+7.0	+46	+77	+98	+85	+14	+3.9	+59	+10.1	+0.2	+0.1	+1.4	+2.0				
48%	48%	68%	71%	70%	68%	70%	63%	58%	61%	61%	59%	63%	60%	55%	58%	+\$108	+\$103	+\$113	+\$103

Traits Observed: CE,200WT,600WT,FAT,EMA,IMF,Genomics

Notes: Take a look at the carcass in this Evidently son, his progeny would be ideal for you if you sell weaners. The Evidently progeny are invaluable in our herd, they are the type that can handle the harder country & conditions. Maternal Brother sold in 2018 Bowen Bull sale. EBVs rated within the breed top 2% EMA, good RBY, IMF, weights, Scrotal & fats.

Purchaser: \$

LOT
82

PEAKES BOWEN BRAVEHEART N571 SV

HBR
EVTN571

Born: 4/8/17
Age: 23.5 mths

AMFU, NHF, CAFU, DDFU

Tattoo: PEK N571 (T&F)

TE MANIA UNLIMITED U3271
HIGHLANDER OF STERN AB
STERN 2664

SIRE: NZE1217000784 BRAVEHEART OF STERN
STERN 947
STERN 3886
STERN 1486

CONNEALY ALL AROUND
KANSAS FATHOM F167
KANSAS ANNIE B170

DAM: EVTK636 PEAKES LULU K636
ARDROSSAN DIRECTION W109
PEAKES LULU D52
BOWEN LULU W27



SIRE: NZE1217000784 BRAVEHEART OF STERN

MID-MAY 2019 ANGUS AUSTRALIA BREEDPLAN

CED	CEM	GL	BW	200d	400d	600d	MCW	Milk	SS	CWT	EMA	Rib	Rump	RBY	IMF	SELECTION INDEXES			
																ABI	Dom.	Grain	Grass
-2.7	-1.2	-2.5	+7.3	+48	+86	+112	+102	+16	+2.6	+59	+8.0	-1.4	-0.8	+1.6	+1.4	+108	+106	+110	+107
57%	56%	84%	74%	71%	69%	73%	68%	63%	65%	64%	63%	66%	64%	61%	62%				

Traits Observed: GL,CE,BWT,200WT,600WT,FAT,EMA,IMF,Genomics

Notes: Deep soft Braveheart of Stern son, his young dam is one of the best in our herd. Grand dam Lulu D52 has produced many bulls sold in Bowen Bull Sales & daughters have been retained in stud. EBVs rated top 10% or better for RBY & EMA. Good weight & scrotal data.

Purchaser: \$

LOT
83

PEAKES BOWEN LAD N647 SV

HBR
EVTN647

Born: 18/7/17
Age: 24 mths

AMFU, NHFU, CAFU, DDFU, RGF

Tattoo: PEK N647 (T&F)

WAIMATA LAD C78
WAIMATA E230
WAIMATA H920

SIRE: NJWE158 MILWILLAH LAD E158
C A FUTURE DIRECTION 5321
TE MANIA MITTAGONG X114
TE MANIA MITTAGONG V1

B T ULTRAVOX 297E
MILWILLAH ULTRAVOX B100
TE MANIA JEDDA X66

DAM: EVTF39 PEAKES ABIGAIL F39
G A R SLEEP EASY 1009
BOWEN ABIGAIL S6
CALLEN ABIGAIL K58+90



MID-MAY 2019 ANGUS AUSTRALIA BREEDPLAN

CED	CEM	GL	BW	200d	400d	600d	MCW	Milk	SS	CWT	EMA	Rib	Rump	RBY	IMF	SELECTION INDEXES			
																ABI	Dom.	Grain	Grass
-0.7	-2.3	-5.6	+5.2	+31	+54	+62	+50	+6	+0.3	+37	+11.0	+0.6	-1.0	+1.4	+2.7	+100	+102	+109	+93
52%	50%	71%	75%	71%	70%	74%	68%	64%	63%	65%	63%	67%	64%	60%	62%				

Traits Observed: CE,BWT,200WT,600WT,FAT,EMA,IMF,Genomics

Notes: The Lad progeny are so consistent, they tick so many boxes for the practical cattleman, the moderate cow weights are a big positive. This young sire is from a brilliant cow family, full brother sold in the 2018 Bowen Bull sale. EBVs rated within the breed top 1% EMA, 13% RBY & 15% IMF.

Purchaser: \$

LOT
84

PEAKES BOWEN UNANIMOUS N537 SV

HBR

Born: 31/7/17
Age: 23.5 mths

AMFU, NHFU, CAFU, DDFU, RGC

Tattoo: PEK N537 (T&F)

EVTN537

GAMBLES ROYAL FLUSH
VISIONTOPLINE ROYAL STOCKMAN
LAGRAND PRIDE 7140

SIRE: USA16992096 VISION UNANIMOUS 1418

BOYD ON TARGET 1083
VISION EDELLA 665
VISION EDELLA 337

WAIMATA E230
MILWILLAH LAD E158
TE MANIA MITTAGONG X114

DAM: EVTK723 PEAKES NUMERAL K723

MILWILLAH IN FOCUS B115
PEAKES NUMERAL E104
BOWEN NUMERAL B2

MID-MAY 2019 ANGUS AUSTRALIA BREEDPLAN

CED	CEM	GL	BW	200d	400d	600d	MCW	Milk	SS	CWT	EMA	Rib	Rump	RBV	IMF	SELECTION INDEXES			
+1.8	+0.5	-5.7	+1.6	+37	+70	+90	+57	+16	+2.0	+49	+3.4	+1.4	+1.9	-0.7	+2.4	ABI	Dom.	Grain	Grass
45%	43%	70%	73%	69%	68%	72%	64%	57%	62%	61%	60%	63%	60%	56%	59%	+\$116	+\$107	+\$120	+\$111

Traits Observed: CE,BWT,200WT,600WT,FAT,EMA,IMF,Genomics

Notes: Outcross pedigree with marbling, I inspected many Vision Unanimous progeny at the Peak Dot Ranch in Canada, this young sire excels in low birth & calving ease. Grand dam Numeral E104 had sons selling to a \$14,000. Ebvs rated within the breed top 5% B.W., 6% rump fat, 12% rib fat, 21% Gest.L. & top 23% IMF.

Purchaser: \$

LOT
85

PEAKES BOWEN REALITY N512 SV

HBR

Born: 30/6/17
Age: 24.5 mths

AMF, NHF, CAF, DDF

Tattoo: PEK N512 (T&F)

EVTN512

SCHURRTOP REALITY X723
MATAURI REALITY 839
MATAURI 06663

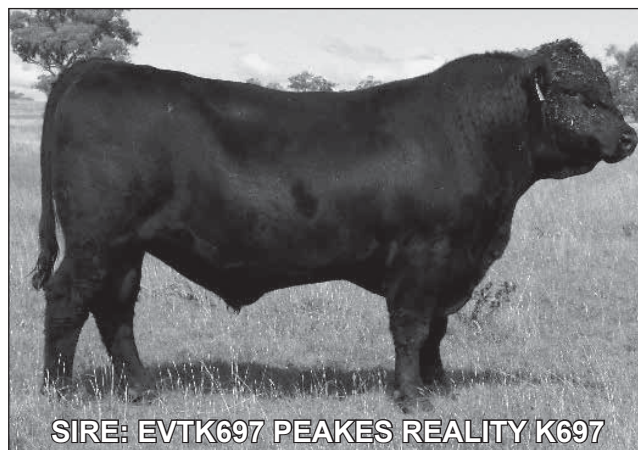
SIRE: EVTK697 PEAKES REALITY K697

DUNOON DECIMAL D342
PEAKES DIANNA G45
PEAKES DIANA C63

BT EQUATOR 395M
THE GRANGE EQUATOR D150
THE GRANGE ALISON A43

DAM: EVTK621 PEAKES DANDLOO K621

BOWEN DIRECTION B64
PEAKES DANDLOO D63
BOWEN DANDLOO B46



SIRE: EVTK697 PEAKES REALITY K697

MID-MAY 2019 ANGUS AUSTRALIA BREEDPLAN

CED	CEM	GL	BW	200d	400d	600d	MCW	Milk	SS	CWT	EMA	Rib	Rump	RBV	IMF	SELECTION INDEXES			
+1.3	+1.0	-0.6	+1.7	+39	+76	+97	+88	+12	+1.2	+56	+4.9	+0.4	-2.4	+0.5	+1.3	ABI	Dom.	Grain	Grass
44%	45%	81%	72%	67%	65%	70%	62%	54%	59%	58%	56%	61%	58%	53%	55%	+\$91	+\$98	+\$88	+\$94

Traits Observed: GL,CE,BWT,200WT,600WT,FAT,EMA,IMF,Genomics

Notes: A very low birth weight sire, EBVs rated top 5% Birth wt. with a moderate frame, he is a soft type of sire to handle the harder country.

Purchaser: \$

LOT
86

PEAKES BOWEN REALITY N527 SV

HBR

Born: 27/6/17
Age: 24.5 mths

AMFU, NHFU, RGC, CAFU, DDF

Tattoo: PEK N527 (T&F)

EVTN527

SCHURRTOP REALITY X723
MATAURI REALITY 839
MATAURI 06663

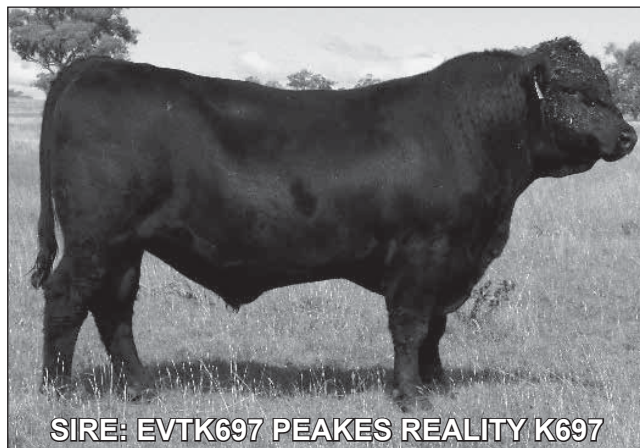
SIRE: EVTK697 PEAKES REALITY K697

DUNOON DECIMAL D342
PEAKES DIANNA G45
PEAKES DIANA C63

S A V PIONEER 7301
BULLIAC FUSION F33
BULLIAC LORNA A1

DAM: EVTK622 PEAKES MONA K622

MILWILLAH IN FOCUS B115
PEAKES MONA E97
BOWEN MONA B27



MID-MAY 2019 ANGUS AUSTRALIA BREEDPLAN

CED	CEM	GL	BW	200d	400d	600d	MCW	Milk	SS	CWT	EMA	Rib	Rump	RBV	IMF	SELECTION INDEXES			
+2.5	+2.6	-3.6	+6.1	+55	+90	+114	+112	+7	+1.4	+59	+7.2	-0.3	-2.4	+1.5	+2.0	ABI	Dom.	Grain	Grass
44%	44%	69%	69%	67%	65%	66%	61%	54%	60%	58%	57%	61%	58%	54%	56%	+\$128	+\$123	+\$140	+\$122

Traits Observed: BWT,200WT,600WT,FAT,EMA,IMF,Genomics

Notes: Great carcass to this Peakes Reality son. He is stout & free moving. Dams first calf, grand dam Mona E97 had four sons sold in previous Bowen Bull Sales. Ebvs rated top 6% 200d, top 10% RBV, top 13% Mat.cow wt & top 18% EMA with all \$indexes top 25% or better.

Purchaser: \$

LOT
87

PEAKES BOWEN LAD N582 SV

HBR

Born: 14/8/17
Age: 23 mths

AMFU, NHFU, CAFU, DDF

Tattoo: PEK N582 (T&F)

EVTN582

WAIMATA E230
MILWILLAH LAD E158
TE MANIA MITTAGONG X114

SIRE: EVTK638 PEAKES LAD K638

MILWILLAH IN FOCUS B115
PEAKES NUMERAL E86
PEAKES NUMERAL C20

YTHANBRAE HENRY VIII U8
N.E.D HENRY VIII Z3
KANSAS MONICA W67

DAM: EVTD51 PEAKES LULU D51

BUTCHS MAXIMUM 3130
BOWEN LULU X11
BOWEN LULU U12



MID-MAY 2019 ANGUS AUSTRALIA BREEDPLAN

CED	CEM	GL	BW	200d	400d	600d	MCW	Milk	SS	CWT	EMA	Rib	Rump	RBV	IMF	SELECTION INDEXES			
+3.4	+0.2	-7.3	+3.5	+38	+67	+85	+61	+12	+1.5	+54	+8.1	-2.5	-2.6	+2.4	+1.8	ABI	Dom.	Grain	Grass
45%	44%	68%	73%	67%	65%	71%	65%	57%	56%	58%	56%	61%	58%	53%	55%	+\$111	+\$113	+\$117	+\$108

Traits Observed: CE,BWT,200WT,600WT,FAT,EMA,IMF,Genomics

Notes: We retained Peakes Lad K638 as we wanted to progress with a son of Lad E158, this young sire exhibits the same great doing ability & soundness that is typical of the Lad line. Excellent short gestation & moderate birth wt. EBVs rated top 10% or better for Gest.L, EMA & RBV.

Purchaser: \$

LOT
88

PEAKES BOWEN REGENT N629^{SV}

HBR
EVTN629

Born: 17/7/17
Age: 24 mths

AMF, NHF, CAF, DDF

Tattoo: PEK N629 (T&F)

RENNYLEA XPONENTIAL X555
TE MANIA AMBASSADOR A134
TE MANIA LOWAN Y211

SIRE: BNAD145 TUWHARETOA REGENT D145

YTHANBRAE HENRY VIII U8
LAWSONS HENRY VIII Y5
YTHANBRAE DIRECTION T270

C A FUTURE DIRECTION 5321
ARDROSSAN DIRECTION W109
ARDROSSAN WILCOOLA Q71+95

DAM: BPKB72 BOWEN RUTH B72

MILLAH MURRAH NEW DESIGN U68
BOWEN RUTH Y34
BOWEN RUTH T20



SIRE: BNAD145 TUWHARETOA REGENT D145

MID-MAY 2019 ANGUS AUSTRALIA BREEDPLAN

CED	CEM	GL	BW	200d	400d	600d	MCW	Milk	SS	CWT	EMA	Rib	Rump	RBY	IMF	SELECTION INDEXES			
																ABI	Dom.	Grain	Grass
-0.5	-3.3	-8.6	+4.3	+46	+79	+107	+96	+16	+1.2	+66	+8.7	+1.5	+0.6	+0.8	+2.4				
61%	62%	74%	76%	74%	72%	73%	71%	68%	69%	69%	68%	71%	68%	66%	67%	+\$127	+\$111	+\$139	+\$120

Traits Observed: CE,BWT,600WT,FAT,EMA,IMF,Genomics

Notes: Fourth & last son from Ruth B72 to be offered at a Bowen Bull Sale, a powerful volume cow that has bred up to when she was sold at 11years of age. Longevity will become a rarity with the computer bred females. This bull had the second highest rump & rib fat measurements when we scanned the Angus bulls. Low B.W short gestation data. EBVs rated within the breed top 3% Gest.L., 6% EMA, top 10% rib fat good IMF, EMA, rump fat & \$ indexes.

Purchaser: \$

LOT
89

PEAKES BOWEN GARTH N654^{SV}

HBR
EVTN654

Born: 17/8/17
Age: 23 mths

AMFU, NHC, CAFU, DDFU

Tattoo: PEK N654 (T&F)

TE MANIA ULONG U41
TE MANIA AFRICA A217
TE MANIA JEDDA Y32

SIRE: VTMG67 TE MANIA GARTH G67

TE MANIA CANTON C138
TE MANIA MITTAGONG E28
TE MANIA MITTAGONG C900

C A FUTURE DIRECTION 5321
ARDROSSAN DIRECTION W109
ARDROSSAN WILCOOLA Q71+95

DAM: EVTE24 PEAKES ABIGAIL E24

BASIN MAX 602C
BOWEN ABIGAIL Z16
ABERDONIAN ABIGAIL R8



SIRE: VTMG67 TE MANIA GARTH G67

MID-MAY 2019 ANGUS AUSTRALIA BREEDPLAN

CED	CEM	GL	BW	200d	400d	600d	MCW	Milk	SS	CWT	EMA	Rib	Rump	RBY	IMF	SELECTION INDEXES			
																ABI	Dom.	Grain	Grass
-0.4	+0.4	-4.1	+4.1	+44	+80	+104	+88	+23	+2.2	+52	+7.6	+0.7	+0.0	+0.7	+2.1				
59%	60%	85%	68%	70%	69%	74%	69%	64%	63%	64%	63%	64%	66%	61%	62%	+\$118	+\$109	+\$125	+\$113

Traits Observed: GL,CE,200WT,600WT,FAT,EMA,IMF

Notes: Sired by the very popular TeMania Garth G67, he is a safe type & his data shows that they cover most bases well. From a top matron in Abigail E24, many sons sold in previous Bowen Bull sales & daughters retained. EBVs rated within the breed top 4% milk & 13% EMA with good IMF.

Purchaser: \$

LOT
90

PEAKES BOWEN REALITY N518^{SV}

HBR
EVTN518

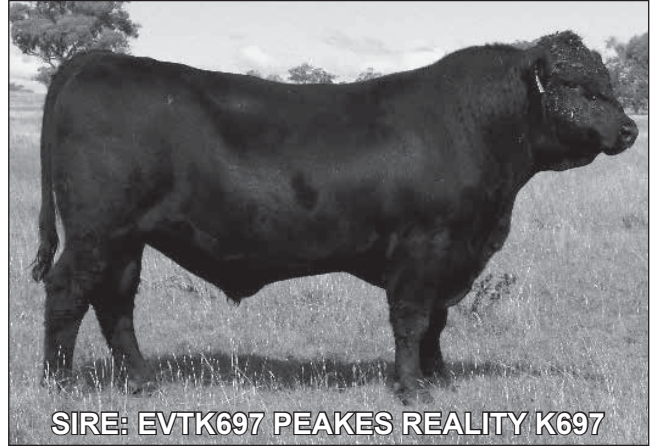
Born: 4/7/17 AMFU, NHFU, CAFU, DD9%, RGF Tattoo: PEK N518 (T&F)
Age: 24.5 mths

SCHURRTOP REALITY X723
MATAURI REALITY 839
MATAURI 06663

SIRE: EVTK697 PEAKES REALITY K697
DUNOON DECIMAL D342
PEAKES DIANNA G45
PEAKES DIANA C63

CONNEALY ALL AROUND
KANSAS FATHOM F167
KANSAS ANNIE B170

DAM: EVTK531 PEAKES LULU K531
ARDROSSAN ADMIRAL A2
PEAKES LULU G34
BOWEN LULU Y32



MID-MAY 2019 ANGUS AUSTRALIA BREEDPLAN

CED	CEM	GL	BW	200d	400d	600d	MCW	Milk	SS	CWT	EMA	Rib	Rump	RBY	IMF	SELECTION INDEXES			
																ABI	Dom.	Grain	Grass
-1.0	-1.2	-1.0	+5.5	+51	+94	+124	+113	+15	+2.1	+70	+3.1	-0.4	-2.3	-0.1	+2.6				
45%	46%	84%	71%	66%	64%	70%	62%	53%	59%	57%	56%	60%	57%	53%	55%	+\$110	+\$104	+\$123	+\$106

Traits Observed: GL,CE,BWT,200WT,600WT,FAT,EMA,IMF,Genomics

Notes: We are not sacrificing volume for marbling with this Peakes Reality son. He has volume & roundness to his body with that terrific soft skin type. EBVs rated top 18% 200, 400,600d & Mat. Cow wt., carcass wt. & IMF.

Purchaser: \$

LOT
91

PEAKES BOWEN GARTH N649^{SV}

HBR
EVTN649

Born: 20/8/17 AMFU, NHFU, CA5%, DDFU Tattoo: PEK N649 (T&F)
Age: 23 mths

TE MANIA ULONG U41
TE MANIA AFRICA A217
TE MANIA JEDDA Y32

SIRE: VTMG67 TE MANIA GARTH G67
TE MANIA CANTON C138
TE MANIA MITTAGONG E28
TE MANIA MITTAGONG C900

B T ULTRAVOX 297E
MILWILLAH ULTRAVOX B100
TE MANIA JEDDA X66

DAM: EVTF82 PEAKES ENNA F82
DSK HU X-TRA STRENGTH X4
BOWEN ENNA B41
BOWEN ENNA V8

MID-MAY 2019 ANGUS AUSTRALIA BREEDPLAN

CED	CEM	GL	BW	200d	400d	600d	MCW	Milk	SS	CWT	EMA	Rib	Rump	RBY	IMF	SELECTION INDEXES			
																ABI	Dom.	Grain	Grass
-1.1	+0.7	-4.2	+5.0	+51	+90	+119	+101	+22	+3.6	+62	+9.5	+1.2	+0.6	+1.4	+1.6				
57%	57%	84%	75%	72%	71%	74%	70%	66%	67%	66%	64%	67%	66%	61%	64%	+\$133	+\$119	+\$139	+\$128

Traits Observed: GL,CE,BWT,200WT,600WT,FAT,EMA,IMF,Genomics

Notes: A larger framed Garth G67 son. He is as long as a train with the largest EMA measurement when we scanned the Angus bulls, he has been a standout since he was a calf. Maternal brothers sold in previous Bowen Bull sales & sisters retained in stud. EBVs rated within the breed top 5% or better milk, scrotal & EMA, 15% rib fat, top 20% 200 & 600d. All \$ indexes top 25% or better.

Purchaser: \$

LOT
92

PEAKES BOWEN LAD N620 SV

HBR

Born: 1/10/17
Age: 21.5 mths

AMFU, NHFU, CAFU, DDFU, RGF

Tattoo: PEK N620 (T&F)

EVTN620

WAIMATA E230
MILWILLAH LAD E158
TE MANIA MITTAGONG X114

SIRE: EVTK638 PEAKES LAD K638

MILWILLAH IN FOCUS B115
PEAKES NUMERAL E86
PEAKES NUMERAL C20

BT CROSSOVER 758N
SILVEIRAS CONVERSION 8064
EXG SARAS DREAM S609 R3

DAM: EVTJ595 PEAKES CONVERSION J595

HIGHLANDER OF STERN AB
PEAKES LULU G42
PEAKES LULU C32



MID-MAY 2019 ANGUS AUSTRALIA BREEDPLAN

CED	CEM	GL	BW	200d	400d	600d	MCW	Milk	SS	CWT	EMA	Rib	Rump	RBV	IMF	SELECTION INDEXES			
+2.0	-1.7	-6.3	+6.8	+54	+91	+124	+115	+19	+2.8	+76	+5.4	-1.1	-1.6	+0.9	+1.4	ABI	Dom.	Grain	Grass
45%	46%	70%	69%	68%	65%	68%	61%	54%	57%	59%	57%	61%	58%	54%	56%	+\$122	+\$111	+\$129	+\$118

Traits Observed: 200WT,600WT,FAT,EMA,IMF,Genomics

Notes: Moderate framed, long bodied son of Lad K638, maternal brother sold in 2018 Bowen Bull Sale \$9000. Excellent growth wt data, EBVs rated within the breed top 19% or better for Gest.L., 200 to 600d wt., mat.cow wt., carc. cwt., scrotal, top 21% Milk.

Purchaser: \$

LOT
93

PEAKES BOWEN EVIDENTLY N737 SV

HBR

Born: 27/7/17
Age: 23.5 mths

AMFU, NHFU, CAFU, DDFU

Tattoo: PEK N737 (T&F)

EVTN737

TE MANIA BARTEL B219
DUNOON EVIDENT E614
DUNOON ELSA B681

SIRE: NKLJ81 KANSAS EVIDENTLY J81

B C MARATHON 7022
KANSAS ANNIE E109
KANSAS ANNIE X164

TWIN VALLEY PRECISION E161
BR MIDLAND
BR ROYAL LASS 7036-19

DAM: EVTF118 PEAKES LULU F118

WHITESTONE WIDESPREAD MB
BOWEN LULU W27
ABERDONIAN LULU R13



Kansas Evidently J81

SIRE: NKLJ81 KANSAS EVIDENTLY J81

MID-MAY 2019 ANGUS AUSTRALIA BREEDPLAN

CED	CEM	GL	BW	200d	400d	600d	MCW	Milk	SS	CWT	EMA	Rib	Rump	RBV	IMF	SELECTION INDEXES			
-3.1	-3.5	-5.6	+6.2	+48	+77	+93	+98	+8	+2.7	+58	+7.8	+0.2	+0.7	+1.4	+1.1	ABI	Dom.	Grain	Grass
52%	50%	68%	74%	70%	68%	70%	64%	60%	62%	61%	61%	63%	61%	57%	59%	+\$99	+\$102	+\$95	+\$99

Traits Observed: CE,BWT,200WT,600WT,FAT,EMA,IMF,Genomics

Notes: Lulu cow line a feature with this Evidently son, maternal brother sold in 2016 Bowen Bull sale \$10,000. EBVs rated within the breed top 12% EMA, 13% RBV, good fat & scrotal data.

Purchaser: \$

**LOT
94**

PEAKES BOWEN LAD N695 SV

HBR

Born: 30/6/17
Age: 24.5 mths

AMFU, NHFU, CAFU, DDFU, RGC

Tattoo: PEK N695 (T&F)

EVTN695

WAIMATA LAD C78
WAIMATA E230
WAIMATA H920

SIRE: NJWE158 MILWILLAH LAD E158

C A FUTURE DIRECTION 5321
TE MANIA MITTAGONG X114
TE MANIA MITTAGONG V1

TE MANIA YORKSHIRE Y437
TE MANIA BERKLEY B1
TE MANIA LOWAN Z53

DAM: EVTG8 PEAKES LULU G8

G T MAXIMUM
ABERDONIAN LULU R13
CALLEN LULU L13+91



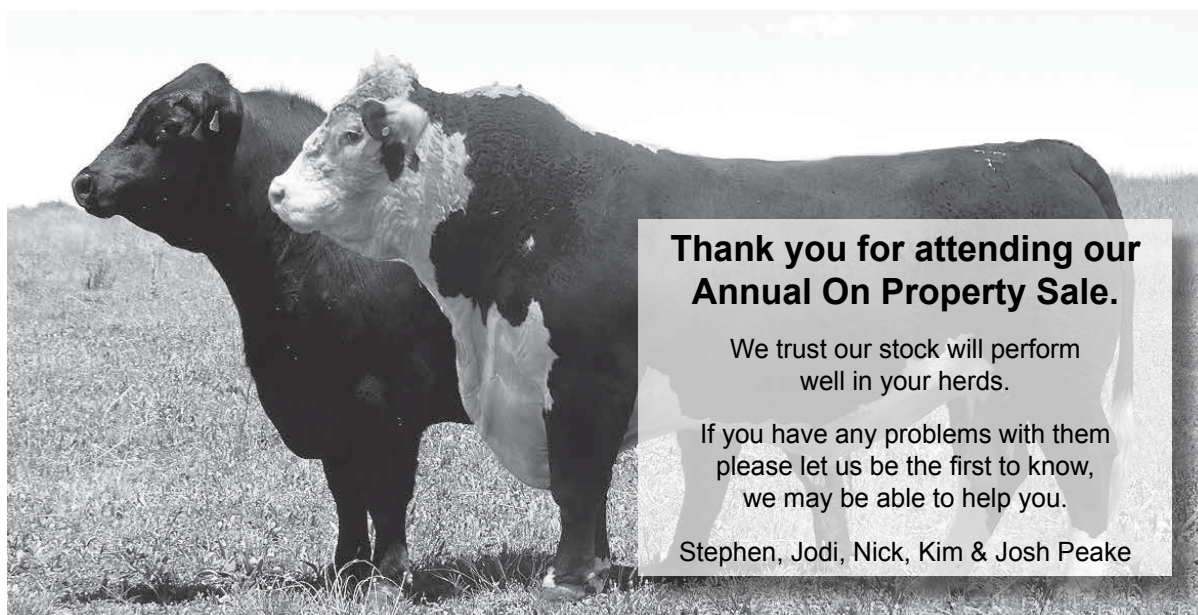
MID-MAY 2019 ANGUS AUSTRALIA BREEDPLAN

CED	CEM	GL	BW	200d	400d	600d	MCW	Milk	SS	CWT	EMA	Rib	Rump	RBY	IMF	SELECTION INDEXES			
																ABI	Dom.	Grain	Grass
-0.5	-3.0	-5.1	+9.3	+48	+87	+118	+121	+8	+1.9	+66	+6.6	-1.4	-3.8	+1.3	+2.6				
52%	52%	71%	74%	71%	69%	73%	68%	63%	63%	65%	63%	67%	64%	60%	63%	+\$122	+\$109	+\$146	+\$111

Traits Observed: CE,BWT,200WT,600WT,FAT,EMA,IMF,Genomics

Notes: This Lad E158 son will grow into a powerful sire, from the maternally great Lulu cow line, Berkley B1 a feature in his dam's pedigree. EBVs rated within the breed top 6% Mat.cow.wt ., 15% RBY & 18% IMF with good weight data.

Purchaser: \$



**Thank you for attending our
Annual On Property Sale.**

We trust our stock will perform
well in your herds.

If you have any problems with them
please let us be the first to know,
we may be able to help you.

Stephen, Jodi, Nick, Kim & Josh Peake