

LOTS 1 - 41

41 POLL HEREFORD BULLS

LOT
1

BOWEN NICKEL N027 (PP)

BWNN027

Born: 29/7/17

Age in Months: 23.5 mths

Eye Pigment: 100-100

Tattoo: N027

KOANUI ROCKET 0219 (IMP NZL) (P)
PINE HILL CROSSFIRE C558 (AI) (P)
PINE HILL GHOST MAPLE W16 (AI) (P)

SIRE: YAVENVALE JET FIRE J032 (PP)

KURRAJONG PARK B144 (P)
YAVENVALE EMPRESS G320 (P)
YAVENVALE EMPRESS C340 (H#)

ALLENDALE NATIONAL W168 (PP)
BOWEN DIAMANTINA D203 (AI) (PP)
BOWEN MATCHLESS Z152 (AI) (P)

DAM: BOWEN HARMONY K235 (P)

BOWEN TORNADO Z260 (AI) (ET) (PP)
BOWEN HARMONY D232 (AI) (ET) (P)
MONREID HARMONY T523 (H)



MAY 2019 HEREFORD GROUP BREEDPLAN

CED	CEM	GL	BW	200d	400d	600d	Mcw	Milk	SS	CWT	EMA	Rib	Rump	RBV	IMF	SELECTION INDEXES			
+0.9	-1.4	-0.1	+5.5	+37	+68	+96	+93	+9	+1.5	+66	+3.9	+0.1	-0.1	+1.7	+0.1	SM	Grass	Grain	EU
45%	34%	62%	65%	65%	66%	68%	59%	46%	62%	58%	50%	53%	57%	51%	53%	+\$98	+\$91	+\$98	+\$106

Traits Observed: CE,200WT,600WT,FAT,EMA,IMF,Genomics

Notes: The most stylish sire that Jet Fire J032 has bred for us, check out his terrific profile, length & high growth. He has a very moderate actual birth weight, pedigree contains the two top cow families of Matchless & Harmony. EBVs rated within the breed top 10% 400, 600d, mat.cow. wt., carc.wt. & RBV with good \$indexes, EMA & 200d wt.

Purchaser: \$

LOT
2

BOWEN NIGGLE N133 (AI) (PP)

BWNN133

Born: 2/8/17

Age in Months: 23.5 mths

Eye Pigment: 100-100

Tattoo: N133

ALLENDALE WATERHOUSE D1 (PP)
DAYS CALIBRE G74 (PP)
ALLENDALE DAWN C62 (AI) (P)

SIRE: BOWEN CALIBRE K207 (AI) (ET) (PP)

MAUNGAHINA KINGDOM BAY 070073 (IMP NZL) (P)
BOWEN HILDA F8 (AI) (P)
BOWEN HILDA A101 (AI) (P)

BBSF 3K RANCHMAN 18R (IMP CAN) (PP)
BOWEN COWBOY C245 (AI) (ET) (PP)
BOWEN ROLLINA N61 (P)

DAM: BOWEN MARGEE J146 (P)

BOWEN URIARRA X217 (P)
PEAKES MARGEE B10 (P)
KYILLA PARK MARGEE (H)



MAY 2019 HEREFORD GROUP BREEDPLAN

CED	CEM	GL	BW	200d	400d	600d	Mcw	Milk	SS	CWT	EMA	Rib	Rump	RBV	IMF	SELECTION INDEXES			
-4.4	+2.9	+1.0	+7.9	+38	+64	+99	+105	+5	+2.6	+57	+4.3	-0.3	-0.8	+1.3	+0.5	SM	Grass	Grain	EU
40%	32%	73%	65%	65%	65%	69%	60%	46%	61%	57%	49%	52%	57%	50%	51%	+\$90	+\$82	+\$97	+\$101

Traits Observed: GL,CE,200WT,600WT,FAT,EMA,IMF,Genomics

Notes: Athletic superior carcass sire with a stylish presence, moderate actual birth weight. EBVs rated within the breed top 5% mat. cow wt., with his 200 to 600day & EMA all range from top 10 to 20%, good IMF, scrotal & RBV.

Purchaser: \$

LOT
3

BOWEN NESTLE N063 (PP)

BWNN063

Born: 2/9/17

Age in Months: 22.5 mths

Eye Pigment: 100-100

Tattoo: N063

ALLENDALE TIPPERARY D13 (AI) (ET) (P)
DAYS WIZARD F84 (P)
ALLENDALE DAWN Z21 (AI) (P)

SIRE: THE RANCH TIPPERARY J06 (AI) (PP)

KIDMAN TAIT C194 (P)
THE RANCH SUSAN F02 (P)
THE RANCH SUSAN C82 (P)

BBSF 3K RANCHMAN 18R (IMP CAN) (PP)
BOWEN COWBOY C245 (AI) (ET) (PP)
BOWEN ROLLINA N61 (P)

DAM: BOWEN MATCHLESS H284 (P)

BOWEN TORNADO Z260 (AI) (ET) (PP)
BOWEN MATCHLESS E143 (AI) (ET) (P)
BOWEN MATCHLESS S238 (AI) (ET) (P)



MAY 2019 HEREFORD GROUP BREEDPLAN

CED	CEM	GL	BW	200d	400d	600d	Mcw	Milk	SS	CWT	EMA	Rib	Rump	RBV	IMF	SELECTION INDEXES			
-1.2	+1.2	+0.2	+4.7	+37	+54	+79	+57	+14	+1.6	+54	+2.7	+1.3	+1.8	-0.1	+0.5	SM	Grass	Grain	EU
40%	30%	50%	66%	65%	65%	68%	59%	45%	60%	57%	48%	51%	56%	49%	50%	+\$89	+\$86	+\$98	+\$95

Traits Observed: 200WT,600WT,FAT,EMA,IMF,Genomics

Notes: Real sire material. The best Tipperary son we have bred, athletic, deep, soft & stylish. His pedigree is a combination of brilliant cow families. EBVs rated within the breed top 15% or better for rib, rump fats with good IMF.

Purchaser: \$

LOT
4

BOWEN NEALE N046 (PP)

BWNN046

Born: 6/9/17

Age in Months: 22.5 mths

Eye Pigment: 100-100

Tattoo: N046

ALLENDALE WATERHOUSE D1 (PP)
DAYS CALIBRE G74 (PP)
ALLENDALE DAWN C62 (AI) (P)

SIRE: BOWEN CALIBRE K207 (AI) (ET) (PP)

MAUNGAHINA KINGDOM BAY 070073 (IMP NZL) (P)
BOWEN HILDA F8 (AI) (P)
BOWEN HILDA A101 (AI) (P)

STUDBROOK D'ARTAGNION V086 (AI) (ET) (S)
OTAPAWA SPARK 3060 (IMP NZL) (AI) (ET) (P)
OTAPAWA SPOT P30 (P)

DAM: BOWEN RUTH J214 (AI) (P)

DEBARRY EDEN (PP)
BOWEN RUTH E321 (AI) (P)
BOWEN RUTH B31 (AI) (P)



MAY 2019 HEREFORD GROUP BREEDPLAN

CED	CEM	GL	BW	200d	400d	600d	Mcw	Milk	SS	CWT	EMA	Rib	Rump	RBV	IMF	SELECTION INDEXES			
+0.0	+3.9	-1.3	+8.3	+45	+70	+105	+110	+11	+3.0	+62	+3.9	+1.1	+1.3	+0.2	+1.3	SM	Grass	Grain	EU
43%	36%	62%	66%	65%	65%	69%	60%	46%	62%	58%	51%	54%	58%	52%	52%	+\$119	+\$113	+\$140	+\$132

Traits Observed: 200WT,600WT,FAT,EMA,IMF,Genomics

Notes: This fellow was the standout bull calf at weaning. He is strong and stout, with great presence & style. Dam Ruth J214 is a donor dam she is a magnificent matron with a perfect udder, grand dam Ruth E321 had progeny selling to \$10,000. EBVs rated within the breed top 1% mat.cow wt., 5% 200 to 600d & mat.cow wt., 10% IMF,scrotal, & carcass wt. & \$ indexes all top 15% or better with good rib, rump fats & EMA.

Purchaser: \$

LOT
5

BOWEN NOBLE N079 (AI) (PP)

BWNN079

Born: 25/7/17

Age in Months: 24.0 mths

Eye Pigment: 100-100

Tattoo: N079

ALLENDALE WATERHOUSE D1 (PP)
DAYS CALIBRE G74 (PP)
ALLENDALE DAWN C62 (AI) (P)

SIRE: BOWEN CALIBRE K207 (AI) (ET) (PP)

MAUNGAHINA KINGDOM BAY 070073 (IMP NZL) (P)
BOWEN HILDA F8 (AI) (P)
BOWEN HILDA A101 (AI) (P)

MOUNTAIN VALLEY ROCKYNED B1 (P)
CASCADE EL DORADO E27 (P)
CASCADE IRISH MAID A37 (AI) (P)

DAM: BOWEN HILDA J236 (P)

ALLENDALE NATIONAL W168 (PP)
BOWEN HILDA C155 (AI) (P)
BOWEN HILDA Z94 (AI) (P)



MAY 2019 HEREFORD GROUP BREEDPLAN

CED	CEM	GL	BW	200d	400d	600d	Mcw	Milk	SS	CWT	EMA	Rib	Rump	RBV	IMF	SELECTION INDEXES			
-1.1	+2.4	-1.4	+5.2	+33	+51	+77	+75	+10	+2.6	+50	+5.3	+0.7	+1.1	+1.0	+1.2	SM	Grass	Grain	EU
42%	34%	74%	66%	66%	66%	69%	61%	46%	62%	58%	51%	54%	58%	52%	51%	+\$91	+\$89	+\$111	+\$103

Traits Observed: GL,CE,200WT,600WT,FAT,EMA,IMF,Genomics

Notes: Up standing sire with excellent length & weight for age, it is hard to find a better carcass & hind quarter on a bull. Grand dam sons selling to \$11,000. EBVs rated within the breed top 10% EMA & IMF, good fats & \$ indexes.

Purchaser: \$

LOT
6

BOWEN NORTH WEST N204 (PP)

BWNN204

Born: 5/8/17

Age in Months: 23.5 mths

Eye Pigment: 100-100

Tattoo: N204

GRASSMERE SPARK 330 (P)
GRASSMERE SPARK 555 (IMP NZL) (PP)
GRASSMERE PRINCESS 245 (P)

SIRE: BOWEN SPARK K204 (AI) (ET) (PP)

KOANUI ROCKET 0219 (IMP NZL) (P)
BOWEN FLORRIE F23 (AI) (P)
BOWEN FLORRIE C91 (P)

BOWEN ROXBOROUGH R266 (AI) (ET) (P)
BOWEN URALBA U160 (P)
ALLENDALE MARLINE L72 (P)

DAM: BOWEN ADVANCE A231 (P)

MERRANLEE SUNDANCE S55 (AI) (PP)
BOWEN ADVANCE X206 (AI) (P)
BOWEN ADVANCE R162 (P)



MAY 2019 HEREFORD GROUP BREEDPLAN

CED	CEM	GL	BW	200d	400d	600d	Mcw	Milk	SS	CWT	EMA	Rib	Rump	RBV	IMF	SELECTION INDEXES			
+1.7	+5.8	+0.6	+7.2	+42	+70	+102	+101	+15	+2.1	+58	+2.8	-0.4	-0.6	+1.2	+0.6	SM	Grass	Grain	EU
40%	35%	55%	63%	62%	62%	66%	58%	52%	58%	54%	47%	50%	54%	48%	49%	+\$104	+\$96	+\$110	+\$112

Traits Observed: CE,200WT,600WT,FAT,EMA,IMF,Genomics

Notes: This sire excels in weight for age weighing the second heaviest Poll Hereford bull at last weighing, he has great thickness & is as long as a train. Third son to be offered from dam Advance A231 at a Bowen Bull Sale, excellent female lines prominent in this fellow's pedigree, EBVs rated within the breed top 10% or better for 200 to 600d & mat. cow wt. Good IMF, RBV, carc.wt. & \$ indexes.

Purchaser: \$

LOT
7

BOWEN NATURAL N172 (AI) (PP)

BWNN172

Born: 27/7/17

Age in Months: 23.5 mths

Eye Pigment: 100-100

Tattoo: N172

GRASSMERE SPARK 330 (P)
GRASSMERE SPARK 555 (IMP NZL) (PP)
GRASSMERE PRINCESS 245 (P)

SIRE: BOWEN SPARK K082 (AI) (S)

BRAYBOOK CHEROKEE C200 (AI) (P)
BOWEN CHERRY RIPE F101 (P)
BOWEN CHERRY RIPE A271 (P)

ALLENDALE NATIONAL W168 (PP)
DUNOON DIAMANTINA D651 (AI) (S)
DUNOON FIRST DAY Y200 (H)

DAM: BOWEN PRUNELLA H162 (P)

AMOR YANAC 2 (ET) (P)
PEAKES PRUNELLA C203 (P)
CAS PRUNELLA X299 (P)

MAY 2019 HEREFORD GROUP BREEDPLAN

CED	CEM	GL	BW	200d	400d	600d	Mcw	Milk	SS	CWT	EMA	Rib	Rump	RBV	IMF	SELECTION INDEXES			
+0.0	+4.0	-2.0	+4.4	+33	+47	+64	+57	+16	+1.5	+38	+2.8	+1.6	+1.8	+0.1	+1.0	SM	Grass	Grain	EU
36%	31%	71%	60%	61%	62%	66%	58%	48%	58%	55%	48%	50%	54%	48%	48%	+\$87	+\$85	+\$104	+\$98

Traits Observed: GL,CE,200WT,600WT,FAT,EMA,IMF,Genomics

Notes: Shorter gestation sire with moderate birth weight data, his wean weight was one of the heaviest for the bull calves. EBVs rated within the breed top 10% rib & rump fats, top 15% IMF. Maternal Brother sold on the 2017 Bowen Bull sale \$15,000

Purchaser: \$

LOT
8

BOWEN NEVIN N196 (PP)

BWNN196

Born: 9/8/17

Age in Months: 23.5 mths

Eye Pigment: 100-100

Tattoo: N196

ALLENDALE TIPPERARY D13 (AI) (ET) (P)
DAYS WIZARD F84 (P)
ALLENDALE DAWN Z21 (AI) (P)

SIRE: THE RANCH TIPPERARY J06 (AI) (PP)

KIDMAN TAIT C194 (P)
THE RANCH SUSAN F02 (P)
THE RANCH SUSAN C82 (P)

BOWEN VINCENT V1 (S)
DEBARRY SCHOONER (S)
DIMBY SONIA 32 (P)

DAM: BOWEN ROLLINA G291 (P)

BOWEN TORNADO Z260 (AI) (ET) (PP)
BOWEN ROLLINA C86 (AI) (P)
BOWEN ROLLINA W237 (P)



MAY 2019 HEREFORD GROUP BREEDPLAN

CED	CEM	GL	BW	200d	400d	600d	Mcw	Milk	SS	CWT	EMA	Rib	Rump	RBV	IMF	SELECTION INDEXES			
-0.9	+0.7	+1.8	+5.2	+36	+53	+77	+43	+15	+2.1	+49	+3.3	+2.8	+4.1	-1.1	+0.8	SM	Grass	Grain	EU
40%	30%	50%	67%	66%	66%	70%	62%	45%	59%	58%	49%	53%	57%	51%	51%	+\$99	+\$97	+\$116	+\$104

Traits Observed: CE,200WT,600WT,FAT,EMA,IMF,Genomics

Notes: Nevin N196 has a great pedigree for carcass with excellent structure & softness, he scanned equal highest for rib & rump fats at scanning. Outstanding data for fats his EBVs rated within the breed top 1% rib & rump fat & top 20% IMF with good 200d wt. & \$indexes. Maternal brothers selling up to \$12,000 in previous Bowen Bull Sales.

Purchaser: \$

LOT
9

BOWEN NYKKO N118 (P)

BWNN118

Born: 5/8/17

Age in Months: 23.5 mths

Eye Pigment: 100-100

Tattoo: N118

ALLENDALE WATERHOUSE D1 (PP)
DAYS CALIBRE G74 (PP)
ALLENDALE DAWN C62 (AI) (P)

SIRE: BOWEN KYOOMA K27 (PP)

BOWEN ARGYLE A355 (AI) (S)
BOWEN KATIE D236 (P)
BOWEN KATIE A336 (P)

BRAXTON GIANT THUNDER S138 (IMP NZL) (P)
BOWEN TORNADO Z260 (AI) (ET) (PP)
BOWEN TRICEL P180 (P)

DAM: BOWEN HARMONY D261 (AI) (ET) (P)

MONREID RICHMAN (AI) (H)
MONREID HARMONY T523 (H)
MONREID HARMONY Q485 (H)



MAY 2019 HEREFORD GROUP BREEDPLAN

CED	CEM	GL	BW	200d	400d	600d	Mcw	Milk	SS	CWT	EMA	Rib	Rump	RBV	IMF	SELECTION INDEXES			
-2.0	+2.9	+0.0	+5.4	+35	+59	+85	+78	+10	+1.7	+53	+4.8	+1.3	+1.8	+0.0	+2.1	SM	Grass	Grain	EU
42%	35%	53%	67%	66%	66%	69%	62%	50%	59%	58%	49%	53%	57%	51%	52%	+\$109	+\$108	+\$147	+\$124

Traits Observed: CE,200WT,600WT,FAT,EMA,IMF,Genomics

Notes: Soft skinned Kyooma son he was the highest marbling Poll Hereford bull when we scanned, the Harmony cow family is proving to be high class. Maternal brother sold in 2018 Bowen Bull sale for \$14,000. EBVs rated within the breed top 1% IMF, top 15% or better for EMA, rib & rump fats with good weight data & \$ indexes.

Purchaser: \$

LOT
10

BOWEN NARROMINE N139 (PP)

BWNN139

Born: 14/8/17

Age in Months: 23.0 mths

Eye Pigment: 100-100

Tattoo: N139

ALLENDALE WATERHOUSE D1 (PP)
DAYS CALIBRE G74 (PP)
ALLENDALE DAWN C62 (AI) (P)

SIRE: BOWEN KYOOMA K27 (PP)

BOWEN ARGYLE A355 (AI) (S)
BOWEN KATIE D236 (P)
BOWEN KATIE A336 (P)

MAUNGAHINA KINGDOM BAY 070073 (IMP NZL) (P)
BOWEN FORT WORTH F44 (AI) (P)
BOWEN TRICEL B100 (P)

DAM: BOWEN ROLLINA J141 (P)

BOWEN LIDDELL Z128 (AI) (P)
BOWEN ROLLINA C113 (P)
BOWEN ROLLINA T10 (P)



MAY 2019 HEREFORD GROUP BREEDPLAN

CED	CEM	GL	BW	200d	400d	600d	Mcw	Milk	SS	CWT	EMA	Rib	Rump	RBV	IMF	SELECTION INDEXES			
-1.2	+3.6	+0.1	+6.1	+39	+59	+87	+95	+7	+2.1	+54	+4.2	+0.3	+0.5	+0.6	+0.9	SM	Grass	Grain	EU
39%	31%	52%	66%	65%	65%	69%	60%	45%	57%	57%	48%	52%	57%	50%	50%	+\$97	+\$93	+\$111	+\$110

Traits Observed: CE,200WT,600WT,FAT,EMA,IMF,Genomics

Notes: Son of Kyooma K27, we sold a ? share in Kyooma for \$35,000 to the Melville stud. Narromine N139 is a strong free moving larger frame sire with a striking profile & is as soft as butter. EBVs rated within the breed top 10% mat. cow wt., 15% 200d & IMF, 20% EMA with good weight data & \$ indexes.

Purchaser: \$

**LOT
11**

BOWEN NEWBRIDGE N289 (PP)

BWNN289

Born: 5/9/17

Age in Months: 22.5 mths

Eye Pigment: 90-100

Tattoo: N289

ALLENDALE NATIONAL W168 (PP)
BOWEN DIAMANTINA D203 (AI) (PP)
BOWEN MATCHLESS Z152 (AI) (P)

SIRE: BOWEN HANLEY H92 (P)

BOWEN ARGYLE A355 (AI) (S)
PEAKES VICTORIA LASS D201 (P)
AMOR VICTORIA LASS A157 (P)

KOANUI ROCKET Q334 (P)
KOANUI ROCKET 0219 (IMP NZL) (P)
KOANUI ANGEL R187 (P)

DAM: BOWEN KATIE G100 (AI) (PP)

BOWEN ARGYLE A355 (AI) (S)
BOWEN KATIE D236 (P)
BOWEN KATIE A336 (P)



MAY 2019 HEREFORD GROUP BREEDPLAN

CED	CEM	GL	BW	200d	400d	600d	Mcw	Milk	SS	CWT	EMA	Rib	Rump	RBY	IMF	SELECTION INDEXES			
																SM	Grass	Grain	EU
-0.5	-1.3	-0.5	+2.6	+34	+59	+81	+76	+17	+1.9	+61	+3.3	+0.9	+1.5	+0.7	+0.5				
41%	36%	57%	64%	62%	64%	69%	60%	47%	61%	57%	50%	53%	57%	51%	51%	+\$96	+\$92	+\$101	+\$103

Traits Observed: 200WT,600WT,FAT,EMA,IMF,Genomics

Notes: Donor dam Katie G100 is an exception female, she has our best bull calf for next year. Newbridge N289 is a low birth weight high growth sire. EBVs rated within the breed top 20% B.W., 15% carc.wt., good data for rib, rump fats & IMF.

Purchaser: \$

**LOT
12**

BOWEN NATIIVE N042 (PP)

BWNN042

Born: 22/7/17

Age in Months: 24.0 mths

Eye Pigment: 100-75

Tattoo: N042

KOANUI ROCKET 0219 (IMP NZL) (P)
BOWEN ESPLANADE E332 (AI) (PP)
BOWEN ROLLINA B347 (P)

SIRE: BOWEN ESPLANADE K167 (AI) (PP)

DEBARRY SCHOONER (S)
BOWEN HILDA G108 (P)
BOWEN HILDA C155 (AI) (P)

HARVIE LADIES MAN 4L (IMP CAN) (PP)
HARVIE RAFTSMAN 16R (IMP CAN) (P)
HARVIE MISS FIREFLY 51F (IMP CAN) (P)

DAM: BOWEN URSULA G161 (AI) (P)

ALLENDALE NATIONAL W168 (PP)
PEAKES URSULA D13 (AI) (P)
PEAKES URSULA Z50 (P)



MAY 2019 HEREFORD GROUP BREEDPLAN

CED	CEM	GL	BW	200d	400d	600d	Mcw	Milk	SS	CWT	EMA	Rib	Rump	RBY	IMF	SELECTION INDEXES			
																SM	Grass	Grain	EU
+2.0	+1.7	-0.3	+4.7	+39	+63	+89	+79	+14	+3.1	+58	+3.6	+0.3	-0.1	+1.2	-0.2				
38%	32%	58%	64%	64%	64%	68%	60%	48%	58%	56%	48%	52%	55%	50%	49%	+\$94	+\$88	+\$90	+\$101

Traits Observed: CE,200WT,600WT,FAT,EMA,IMF,Genomics

Notes: The heaviest Poll Hereford bull at last weighing, highest EMA & equal highest rib & rump fats at scanning. He has loads of style & presence standing over a lot of ground, with a strong pedigree for weight & yield. Two maternal brothers sold in previous Bowen Bull Sales to \$10,000. EBVs rated within the breed top 10% scrotal & top 20% or better for 200 to 600day weight data, good carcass wt. EMA & RBY.

Purchaser: \$

**LOT
13**

BOWEN NAMOI N270 (S)

BWNN270

Born: 18/8/17

Age in Months: 23.0 mths

Eye Pigment: 100-100

Tattoo: N270

KOANUI ROCKET 0219 (IMP NZL) (P)
 PINE HILL CROSSFIRE C558 (AI) (P)
 PINE HILL GHOST MAPLE W16 (AI) (P)

SIRE: YAVENVALE JET FIRE J032 (PP)

KURRAJONG PARK B144 (P)
 YAVENVALE EMPRESS G320 (P)
 YAVENVALE EMPRESS C340 (H#)

GRASSMERE SPARK 330 (P)
 GRASSMERE SPARK 555 (IMP NZL) (PP)
 GRASSMERE PRINCESS 245 (P)

DAM: BOWEN FLORRIE J301 (AI) (ET) (P)

BOWEN LIDDELL Z128 (AI) (P)
 BOWEN FLORRIE C91 (P)
 BOWEN FLORRIE Y10 (P)



MAY 2019 HEREFORD GROUP BREEDPLAN

CED	CEM	GL	BW	200d	400d	600d	Mcw	Milk	SS	CWT	EMA	Rib	Rump	RBV	IMF	SELECTION INDEXES			
+4.3	+6.9	-0.7	+6.8	+44	+82	+119	+114	+20	+2.7	+74	+3.0	-0.4	-1.1	+1.4	+0.6	SM	Grass	Grain	EU
47%	35%	62%	67%	66%	66%	68%	60%	47%	62%	58%	50%	53%	58%	52%	54%	+\$132	+\$123	+\$143	+\$143

Traits Observed: CE,200WT,600WT,FAT,EMA,IMF,Genomics

Notes: A big upstanding sire with a pedigree for marbling, growth & weight, grand dam Florrie C91 had been in our donor program, leaving many top progeny with sons selling in previous Bowen Bull sales & daughters retained in stud. EBVs rated within the breed top 5% or better for 200 day to mat. Cow wt., carc.wt., top 15% milk & good \$indexes, RBV & Scrotal.

Purchaser: \$

**LOT
14**

BOWEN NIGHT CAP N157 (PP)

BWNN157

Born: 22/8/17

Age in Months: 23.0 mths

Eye Pigment: 100-100

Tattoo: N157

ALLENDALE WATERHOUSE D1 (PP)
 DAYS CALIBRE G74 (PP)
 ALLENDALE DAWN C62 (AI) (P)

SIRE: BOWEN CALIBRE K207 (AI) (ET) (PP)

MAUNGAHINA KINGDOM BAY 070073 (IMP NZL) (P)
 BOWEN HILDA F8 (AI) (P)
 BOWEN HILDA A101 (AI) (P)

BRAXTON GIANT THUNDER S138 (IMP NZL) (P)
 BOWEN TORNADO Z260 (AI) (ET) (PP)
 BOWEN TRICEL P180 (P)

DAM: BOWEN MAPLE G94 (AI) (P)

DEBARRY EDEN (PP)
 BOWEN MAPLE E90 (AI) (P)
 BOWEN MAPLE B182 (AI) (ET) (P)



MAY 2019 HEREFORD GROUP BREEDPLAN

CED	CEM	GL	BW	200d	400d	600d	Mcw	Milk	SS	CWT	EMA	Rib	Rump	RBV	IMF	SELECTION INDEXES			
-1.4	+3.3	+0.3	+4.9	+34	+58	+83	+84	+9	+2.9	+49	+2.6	+1.4	+2.0	-0.8	+1.7	SM	Grass	Grain	EU
43%	36%	64%	67%	65%	65%	69%	61%	48%	63%	58%	51%	53%	57%	51%	52%	+\$101	+\$98	+\$128	+\$112

Traits Observed: CE,200WT,600WT,FAT,EMA,IMF,Genomics

Notes: Night Cap N157 had the second top IMF% scan in the Poll Hereford bulls. He is a deep bodied Calibre K207 son, maternal brother sold in 2018 Bowen Bull sale \$14,000. Pedigree combines the dominant female lines of Maple, Tricel, Hilda & Dawn. EBVs rated within the breed top 5% IMF, top 10% rib & rump fats, good \$ indexes & weight data.

Purchaser: \$

**LOT
15**

BOWEN NARRANDERA N231 (P)

BWNN231

Born: 12/9/17

Age in Months: 22.0 mths

Eye Pigment: 100-100

Tattoo: N231

GRASSMERE SPARK 330 (P)
GRASSMERE SPARK 555 (IMP NZL) (PP)
GRASSMERE PRINCESS 245 (P)

SIRE: BOWEN SPARK K90 (AI) (PP)

BOWEN VINCENT V1 (S)
BOWEN ROLLINA B101 (AI) (P)
BOWEN ROLLINA X14 (P)

BRAXTON GIANT THUNDER S138 (IMP NZL) (P)
BOWEN TORNADO Z260 (AI) (ET) (PP)
BOWEN TRICEL P180 (P)

DAM: BOWEN HARMONY D233 (AI) (ET) (P)

MONREID RICHMAN (AI) (H)
MONREID HARMONY T523 (H)
MONREID HARMONY Q485 (H)



MAY 2019 HEREFORD GROUP BREEDPLAN

CED	CEM	GL	BW	200d	400d	600d	Mcw	Milk	SS	CWT	EMA	Rib	Rump	RBY	IMF	SELECTION INDEXES			
																SM	Grass	Grain	EU
+0.8	+4.8	-0.7	+5.1	+36	+59	+85	+70	+12	+0.9	+52	+2.9	+0.9	+0.9	+0.2	+1.6				
40%	35%	56%	62%	61%	61%	65%	59%	52%	59%	54%	47%	50%	53%	48%	48%	+\$109	+\$107	+\$141	+\$123

Traits Observed: 200WT,600WT,FAT,EMA,IMF,Genomics

Notes: Narrandera N231 has great depth of body, his pedigree combines the top sire lines of Tornado & Vincent & the great Harmony cow family. A high marbling sire EBVs rated within the breed top 5% IMF, good \$indexes, rib & rump fats.

Purchaser: \$

**LOT
16**

BOWEN NEXT SIRE N011 (AI) (PP)

BWNN011

Born: 5/7/17

Age in Months: 24.5 mths

Eye Pigment: 100-100

Tattoo: N011

YARRAM HOT SHOT P028 (AI) (H)
CAPETHORNE HOT SHOT 03 22 (P)
CAPETHORNE AMETHYST U21 (P)

SIRE: MATARIKI HOLY - SMOKE (IMP NZL) (P)

KOANUI BULL'S-EYE R60 (P)
MATARIKI GIRLIE 00323 (P)
MATARIKI GIRLIE 3 (P)

ALLENDALE WATERHOUSE D1 (PP)
DAYS CALIBRE G74 (PP)
ALLENDALE DAWN C62 (AI) (P)

DAM: BOWEN FANCY K229 (P)

BOWEN STU-GRADON W404 (S)
PEAKES FANCY B136 (AI) (ET) (P)
WONDAI FANCY S15 (AI) (P)



MAY 2019 HEREFORD GROUP BREEDPLAN

CED	CEM	GL	BW	200d	400d	600d	Mcw	Milk	SS	CWT	EMA	Rib	Rump	RBY	IMF	SELECTION INDEXES			
																SM	Grass	Grain	EU
-1.9	+2.1	-1.2	+4.8	+37	+66	+87	+91	+10	+2.4	+64	+5.8	+0.7	+1.0	+1.2	+1.0				
55%	52%	75%	66%	67%	68%	71%	65%	60%	63%	63%	57%	60%	63%	59%	59%	+\$105	+\$102	+\$122	+\$119

Traits Observed: GL,CE,200WT,600WT,FAT,EMA,IMF

Notes: Tremendous powerful high yielding son of New Zealand sire Holy Smoke, he has stud sire potential with his outstanding phenotype & data. EBVs rated within the breed top 10% or better for EMA & Carc.wt.,top 15% IMF, all weight data top 25% or better with good fats, RBY & \$indexes.

Purchaser: \$

**LOT
17**

BOWEN NIGEL N095 (PP)

BWNN095

Born: 11/8/17

Age in Months: 23.0 mths

Eye Pigment: 100-100

Tattoo: N095

ALLENDALE WATERHOUSE D1 (PP)
DAYS CALIBRE G74 (PP)
ALLENDALE DAWN C62 (AI) (P)

SIRE: BOWEN CALIBRE K68 (S)

BRAYBOOK CHEROKEE C200 (AI) (P)
BOWEN HARMONY F27 (P)
BOWEN HARMONY B279 (H)

KOANUI ROCKET 0219 (IMP NZL) (P)
BOWEN ESPLANADE E332 (AI) (PP)
BOWEN ROLLINA B347 (P)

DAM: BOWEN ROLLINA K188 (AI) (P)

DEBARRY SCHOONER (S)
BOWEN ROLLINA G291 (P)
BOWEN ROLLINA C86 (AI) (P)



MAY 2019 HEREFORD GROUP BREEDPLAN

CED	CEM	GL	BW	200d	400d	600d	Mcw	Milk	SS	CWT	EMA	Rib	Rump	RBV	IMF	SELECTION INDEXES			
-0.5	+5.5	-0.6	+5.0	+34	+56	+83	+73	+12	+2.9	+48	+3.7	+1.5	+2.1	+0.5	+1.3	SM	Grass	Grain	EU
36%	31%	56%	60%	61%	62%	66%	58%	46%	58%	54%	47%	50%	55%	49%	47%	+\$110	+\$108	+\$134	+\$123

Traits Observed: CE,200WT,600WT,FAT,EMA,IMF,Genomics

Notes: A heavy strong sire with superior roundness to his carcass, he will pack the weight into his progeny. EBVs rated within the breed top 10% or better for IMF, scrotal, rib & rump fats, good \$indexes & EMA.

Purchaser: \$

**LOT
18**

BOWEN NOMINEE N021 (PP)

BWNN021

Born: 1/8/17

Age in Months: 23.5 mths

Eye Pigment: 100-100

Tattoo: N021

KOANUI ROCKET 0219 (IMP NZL) (P)
PINE HILL CROSSFIRE C558 (AI) (P)
PINE HILL GHOST MAPLE W16 (AI) (P)

SIRE: YAVENVALE JET FIRE J032 (PP)

KURRAJONG PARK B144 (P)
YAVENVALE EMPRESS G320 (P)
YAVENVALE EMPRESS C340 (H#)

BBSF 3K RANCHMAN 18R (IMP CAN) (PP)
BOWEN COWBOY C245 (AI) (ET) (PP)
BOWEN ROLLINA N61 (P)

DAM: BOWEN NANCY K52 (P)

BOWEN TORNADO Z260 (AI) (ET) (PP)
BOWEN NANCY E179 (P)
BOWEN NANCY A145 (S)



MAY 2019 HEREFORD GROUP BREEDPLAN

CED	CEM	GL	BW	200d	400d	600d	Mcw	Milk	SS	CWT	EMA	Rib	Rump	RBV	IMF	SELECTION INDEXES			
+3.6	+5.7	-2.1	+2.7	+31	+54	+69	+54	+16	+0.8	+48	+3.1	+0.6	+0.7	+0.9	+0.3	SM	Grass	Grain	EU
46%	33%	61%	67%	66%	66%	69%	60%	46%	62%	58%	50%	54%	58%	52%	54%	+\$90	+\$88	+\$97	+\$99

Traits Observed: CE,200WT,600WT,FAT,EMA,IMF,Genomics

Notes: Nominee N21 is thick & soft, pedigree combines the two great carcass sires of Tornado & Cowboy. Excellent shorter gestation & low birth weight data.

Purchaser: \$

**LOT
19**

BOWEN NADIR N081 (PP)

BWNN081

Born: 16/8/17

Age in Months: 23.0 mths

Eye Pigment: 100-100

Tattoo: N081

KOANUI ROCKET 0219 (IMP NZL) (P)
 PINE HILL CROSSFIRE C558 (AI) (P)
 PINE HILL GHOST MAPLE W16 (AI) (P)

SIRE: YAVENVALE JET FIRE J032 (PP)

KURRAJONG PARK B144 (P)
 YAVENVALE EMPRESS G320 (P)
 YAVENVALE EMPRESS C340 (H#)

BOWEN ROXBOROUGH R266 (AI) (ET) (P)
 BOWEN URALBA U160 (P)
 ALLENDALE MARLINE L72 (P)

DAM: BOWEN CORAL D212 (P)

KENYA MAJOR (P)
 BOWEN CORAL Z229 (P)
 BOWEN CORAL V11 (P)



MAY 2019 HEREFORD GROUP BREEDPLAN

CED	CEM	GL	BW	200d	400d	600d	Mcw	Milk	SS	CWT	EMA	Rib	Rump	RBV	IMF	SELECTION INDEXES			
+1.9	+3.9	-3.8	+5.0	+36	+57	+79	+64	+16	+1.9	+48	+3.4	-0.1	+0.1	+1.4	+0.7	SM	Grass	Grain	EU
47%	35%	63%	69%	67%	68%	70%	62%	50%	63%	59%	51%	55%	59%	53%	55%	+\$95	+\$91	+\$108	+\$105

Traits Observed: CE,200WT,600WT,FAT,EMA,IMF,Genomics

Notes: Nadir N081 is easy doing & will survive the harder conditions he has an excellent carcass with a powerful pedigree for high yield. Data rating within the breed shows shorter gestation top 5% with good EMA, RBV, IMF & \$indexes.

Purchaser: \$

**LOT
20**

BOWEN NOTORIOUS N245 (AI) (PP)

BWNN245

Born: 4/8/17

Age in Months: 23.5 mths

Eye Pigment: 100-100

Tattoo: N245

SOUTH BUKALONG WALKER 6 (AI) (P)
 SOUTH BUKALONG WALLACE 2 (P)
 SOUTH BUKALONG VICTORIA 152 (P)

SIRE: GLENTREVOR WALLACE H427 (AI) (PP)

GLENTREVOR ROCKET D016 (AI) (P)
 GLENTREVOR MARITANA F240 (P)
 GLENTREVOR MARITANA C925 (AI) (P)

STUDBROOK D'ARTAGNION V086 (AI) (ET) (S)
 OTAPAWA SPARK 3060 (IMP NZL) (AI) (ET) (P)
 OTAPAWA SPOT P30 (P)

DAM: BOWEN MATCHLESS L69 (AI) (P)

DXB 7C BLOCKBUSTER 3K (IMP CAN) (P)
 BOWEN MATCHLESS B192 (AI) (ET) (P)
 BOWEN MATCHLESS P288 (P)



MAY 2019 HEREFORD GROUP BREEDPLAN

CED	CEM	GL	BW	200d	400d	600d	Mcw	Milk	SS	CWT	EMA	Rib	Rump	RBV	IMF	SELECTION INDEXES			
+12.5	+10.6	-4.1	-0.3	+25	+45	+59	+34	+14	+1.4	+49	+2.8	+1.8	+2.4	-0.5	+2.1	SM	Grass	Grain	EU
50%	42%	75%	68%	66%	66%	69%	62%	55%	64%	59%	52%	55%	59%	53%	56%	+\$116	+\$119	+\$158	+\$130

Traits Observed: GL,CE,200WT,600WT,FAT,EMA,IMF,Genomics

Notes: Notorious N245 is recommended for heifers with his outstanding low birth weight & short gestation. He had the equal second highest marbling score in his mob at scanning. Sire Glentrevor Wallace H427 is a breed trait leader for short gestation, low birth weight, scrotal & IMF. This son has excellent marbling with very low birth wt. & short gestation EBVs rated within the breed top 1% IMF, top 10% or better for B.W, gestation length, rib & rump fats, great \$indexes.

Purchaser: \$

**LOT
21**

BOWEN NEVERTIRE N151 (AI) (ET) (PP)

BWNN151

Born: 15/9/17

Age in Months: 22.0 mths

Eye Pigment: 100-100

Tattoo: N151

FELTONS LEGEND 242 (IMP USA) (P)
MSU TCF REVOLUTION 4R (IMP USA) (PP)
MSU TCF RACHAEL ET 54N (P)

SIRE: KCF BENNETT REVOLUTION X51 (IMP USA) (P)
EFBEEF SCHU-LAR PROFICIENT N093 (IMP USA) (P)
KCF MISS PROFICIENT U201 (P)
KCF MISS 774 L82 (P)

BOWEN VINCENT V1 (S)
DEBARRY EDEN (PP)
DEBARRY PURITY V50 (AI) (ET) (P)

DAM: BOWEN RUTH E321 (AI) (P)
TYCOLAH ZORRO (P)
BOWEN RUTH B31 (AI) (P)
BOWEN RUTH V207 (AI) (P)



MAY 2019 HEREFORD GROUP BREEDPLAN

CED	CEM	GL	BW	200d	400d	600d	Mcw	Milk	SS	CWT	EMA	Rib	Rump	RBV	IMF	SELECTION INDEXES			
+5.6	+3.4	+0.3	+2.5	+34	+53	+69	+53	+16	+0.3	+56	+6.9	+1.7	+1.8	+0.5	+1.4	SM	Grass	Grain	EU
47%	38%	66%	70%	68%	67%	68%	61%	58%	66%	58%	52%	56%	59%	51%	57%	+\$108	+\$108	+\$135	+\$121

Traits Observed: BWT,200WT,600WT,FAT,EMA,IMF,Genomics

Notes: Nevertire N151 has a great carcass with terrific length of body & is of moderate birth weight. Sire by the American performance sire Revolution X51 offering an outcross pedigree. Donor Ruth E321 is a top breeder with many daughters retained in stud & sons selling in previous Bowen Bull Sales. EBVs rated within the breed top 1% EMA, 5% IMF & rib fat, 15% rump fat with good \$ indexes & lower birth weight data.

Purchaser: \$

**LOT
22**

BOWEN NITRATE N092 (AI) (PP)

BWNN092

Born: 1/8/17

Age in Months: 23.5 mths

Eye Pigment: 100-100

Tattoo: N092

SOUTH BUKALONG WALKER 6 (AI) (P)
SOUTH BUKALONG WALLACE 2 (P)
SOUTH BUKALONG VICTORIA 152 (P)

SIRE: GLENTREVOR WALLACE H427 (AI) (PP)
GLENTREVOR ROCKET D016 (AI) (P)
GLENTREVOR MARITANA F240 (P)
GLENTREVOR MARITANA C925 (AI) (P)

ALLENDALE NATIONAL W168 (PP)
BOWEN DIAMANTINA D203 (AI) (PP)
BOWEN MATCHLESS Z152 (AI) (P)

DAM: BOWEN MATCHLESS J306 (AI) (ET) (TW) (P)
BOWEN TORNADO Z260 (AI) (ET) (PP)
RILO PARK MATCHLESS C10 (AI) (ET) (P)
BOWEN MATCHLESS L140 (AI) (P)



MAY 2019 HEREFORD GROUP BREEDPLAN

CED	CEM	GL	BW	200d	400d	600d	Mcw	Milk	SS	CWT	EMA	Rib	Rump	RBV	IMF	SELECTION INDEXES			
+7.7	+4.0	-0.8	+1.6	+35	+59	+81	+47	+11	+2.6	+62	+2.0	+1.2	+1.7	-0.3	+1.7	SM	Grass	Grain	EU
49%	41%	74%	67%	66%	65%	65%	58%	53%	64%	56%	50%	53%	56%	49%	55%				

Traits Observed: GL,CE,Genomics

Notes: Nitrate N092 has a sire's outlook & profile the type you will notice as soon as you see him in the paddock. Second son to be offered from Matchless J306 at Bowen Bull sale, maternal brother sold for \$13,000 at 2018 Bowen Bull sale. EBVs rated within the breed top 5% IMF, top 15% or better for birth wt. & carc. Wt., top 20% or better Rib & rump fats.

Purchaser: \$

**LOT
23**

BOWEN NULLAMANNA N156 (AI) (ET) (P)

BWNN156

Born: 22/9/17

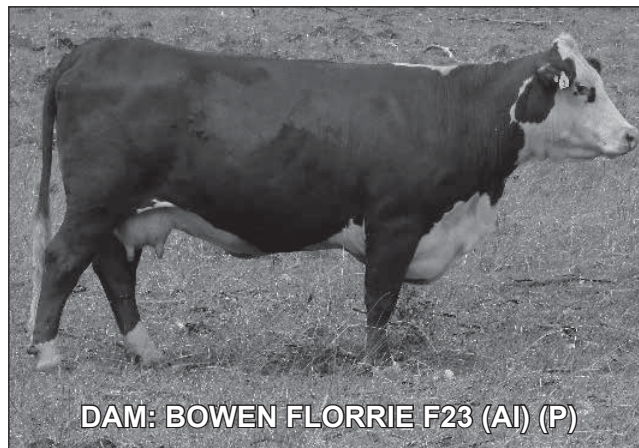
Age in Months: 22.0 mths

Eye Pigment: 100-100

Tattoo: N156

KCF BENNETT 3008 M326 (P)
 NJW 73S M326 TRUST 100W ET (IMP USA) (ET) (P)
 NJW P606 72N DAYDREAM 73S (P)
SIRE: NJW 78P TWENTYTWELVE 190Z (IMP CAN) (AI) (ET) (P)
 RU 20X BOULDER 57G (IMP CAN) (P)
 NJW BW LADYSPORT DEW 78P ET (P)
 SADDLE-VALLEY LADYSPORT 120J (P)

KOANUI ROCKET Q334 (P)
 KOANUI ROCKET 0219 (IMP NZL) (P)
 KOANUI ANGEL R187 (P)
DAM: BOWEN FLORRIE F23 (AI) (P)
 BOWEN LIDDELL Z128 (AI) (P)
 BOWEN FLORRIE C91 (P)
 BOWEN FLORRIE Y10 (P)



DAM: BOWEN FLORRIE F23 (AI) (P)

MAY 2019 HEREFORD GROUP BREEDPLAN

CED	CEM	GL	BW	200d	400d	600d	Mcw	Milk	SS	CWT	EMA	Rib	Rump	RBV	IMF	SELECTION INDEXES			
+1.3	+6.0	+2.4	+2.9	+29	+54	+82	+76	+21	+2.2	+55	+3.8	-0.2	-0.8	+1.8	-0.1	SM	Grass	Grain	EU
47%	36%	64%	70%	67%	66%	67%	59%	45%	64%	56%	50%	54%	57%	49%	55%	+\$90	+\$84	+\$86	+\$96

Traits Observed: BWT,200WT,600WT,FAT,EMA,IMF,Genomics

Notes: Out cross pedigree son of the Canadian NJW sire, donor dam Florrie a powerful deep bodied female with an excellent udder & teat placement. Maternal brother sold in 2016 Bowen Bull sale to Lowana Partnership for the second top price of \$32,000. Lower birth weight data EBVs rated within the breed top 10% milk & RBV, good EMA & Carcass wt.

Purchaser: \$

**LOT
24**

BOWEN NOMINATE N222 (PP)

BWNN222

Born: 4/8/17

Age in Months: 23.5 mths

Eye Pigment: 100-100

Tattoo: N222

SOUTH BUKALONG WALKER 6 (AI) (P)
 SOUTH BUKALONG WALLACE 2 (P)
 SOUTH BUKALONG VICTORIA 152 (P)
SIRE: GLENTREVOR WALLACE H427 (AI) (PP)
 GLENTREVOR ROCKET D016 (AI) (P)
 GLENTREVOR MARITANA F240 (P)
 GLENTREVOR MARITANA C925 (AI) (P)

ALLENDALE NATIONAL W168 (PP)
 BOWEN DIAMANTINA D203 (AI) (PP)
 BOWEN MATCHLESS Z152 (AI) (P)
DAM: BOWEN MISCHIEF J73 (P)
 BOWEN ARGYLE A355 (AI) (S)
 PEAKES MISCHIEF D124 (P)
 AMOR MISCHIEF A95 (P)

MAY 2019 HEREFORD GROUP BREEDPLAN

CED	CEM	GL	BW	200d	400d	600d	Mcw	Milk	SS	CWT	EMA	Rib	Rump	RBV	IMF	SELECTION INDEXES			
+8.8	+4.1	-2.6	+1.6	+34	+51	+67	+46	+8	+1.5	+54	+2.5	+0.7	+1.1	+0.2	+1.3	SM	Grass	Grain	EU
48%	40%	64%	68%	66%	67%	70%	62%	54%	64%	59%	52%	55%	59%	53%	55%	+\$97	+\$98	+\$121	+\$108

Traits Observed: CE,200WT,600WT,FAT,EMA,IMF,Genomics

Notes: Nominate N222 is recommended for heifers, he is a long-bodied son of the Glentrevor Wallace H427 sire trait leader for short gestation, low birth weight, scrotal & IMF. This young sire has excellent calving data EBVs rated within the breed top 10% IMF, Birth wt. & Gestation L. with good fats & \$indexes.

Purchaser: \$

**LOT
25**

BOWEN NEWSTEAD N193 (PP)

BWNN193

Born: 5/9/17

Age in Months: 22.5 mths

Eye Pigment: 100-100

Tattoo: N193

ALLENDALE WATERHOUSE D1 (PP)
 DAYS CALIBRE G74 (PP)
 ALLENDALE DAWN C62 (AI) (P)
SIRE: BOWEN CALIBRE K207 (AI) (ET) (PP)
 MAUNGAHINA KINGDOM BAY 070073 (IMP NZL) (P)
 BOWEN HILDA F8 (AI) (P)
 BOWEN HILDA A101 (AI) (P)



RLOA R271 DYNASTY ET37U (IMP CAN) (P)
 JSF 37 271 DEVO 23C (IMP CAN) (PP)
 JSF 183 VICTORIA 7A (IMP CAN) (P)

DAM: BOWEN RUTH Z324 (AI) (P)
 KENYA BEACON 2 (P)
 BOWEN RUTH M17 (AI) (P)
 BOWEN RUTH H18 (AI) (P)

MAY 2019 HEREFORD GROUP BREEDPLAN

CED	CEM	GL	BW	200d	400d	600d	Mcw	Milk	SS	CWT	EMA	Rib	Rump	RBV	IMF	SELECTION INDEXES			
+0.3	+2.8	-0.5	+3.6	+26	+46	+67	+73	+7	+2.0	+42	+3.9	+0.9	+1.3	+0.4	+0.6	SM	Grass	Grain	EU
45%	37%	64%	68%	66%	65%	68%	60%	51%	63%	58%	50%	53%	57%	51%	51%	+\$76	+\$74	+\$83	+\$84

Traits Observed: 200WT,600WT,FAT,EMA,IMF,Genomics

Notes: Newstead N193 is a soft stylish stout bull & is athletic with correct structure. He has a unique pedigree with the outstanding sires of JSF Devo, Kenya Beacon & donor dam Ruth H18. Dam Ruth Z324 has had six sons selling at Bowen Bull Sales, a lower birth weight sire with good fats EMA & IMF data.

Purchaser: \$

**LOT
26**

BOWEN NIKLAUS N221 (PP)

BWNN221

Born: 10/8/17

Age in Months: 23.5 mths

Eye Pigment: 100-100

Tattoo: N221

GRASSMERE SPARK 330 (P)
 GRASSMERE SPARK 555 (IMP NZL) (PP)
 GRASSMERE PRINCESS 245 (P)
SIRE: BOWEN SPARK K082 (AI) (S)
 BRAYBOOK CHEROKEE C200 (AI) (P)
 BOWEN CHERRY RIPE F101 (P)
 BOWEN CHERRY RIPE A271 (P)

ALLENDALE WATERHOUSE D1 (PP)
 DAYS CALIBRE G74 (PP)
 ALLENDALE DAWN C62 (AI) (P)

DAM: BOWEN MAPLE K76 (P)
 TYCOLAH ZORRO (P)
 BOWEN MAPLE D249 (AI) (ET) (P)
 BOWEN MAPLE P111 (P)

MAY 2019 HEREFORD GROUP BREEDPLAN

CED	CEM	GL	BW	200d	400d	600d	Mcw	Milk	SS	CWT	EMA	Rib	Rump	RBV	IMF	SELECTION INDEXES			
+0.9	+5.8	+0.2	+4.9	+33	+51	+67	+64	+10	+1.5	+42	+4.2	+1.6	+2.5	+0.2	+1.4	SM	Grass	Grain	EU
38%	33%	57%	61%	61%	62%	66%	58%	48%	60%	54%	48%	51%	55%	49%	49%	+\$96	+\$96	+\$120	+\$109

Traits Observed: CE,200WT,600WT,FAT,EMA,IMF,Genomics

Notes: Niklaus N217 is long & correct in structure. His pedigree is stacked with the prolific breeding cow families of Princess, Cherry Rippe, Dawn & Maple. EBVs rated within the breed top 5% IMF & rump fat, top 10% rib fat with good EMA & \$indexes.

Purchaser: \$

**LOT
27**

BOWEN CALIBRE N303

UNREG

Born: 10/10/17 Age in Months: 21.5 mths

Eye Pigment: 100-100

Tattoo: N303

ALLENDALE WATERHOUSE D1 (PP)
DAYS CALIBRE G74 (PP)
ALLENDALE DAWN C62 (AI) (P)

SIRE: BOWEN KYOOMA K27 (PP)

BOWEN ARGYLE A355 (AI) (S)
BOWEN KATIE D236 (P)
BOWEN KATIE A336 (P)

OTAPAWA SKYMATE 2046 (IMP NZ) (ET) (P)
BRAYBROOK CHEROKEE C200 (AI) (P)
TYCOLAH DOMINETTE Y56 (P)

DAM: BOWEN FLORRIE F250 (P)

BOWEN VALOUR V39 (P)
BOWEN FLORRIE Y10 (P)
BOWEN FLORRIE U157 (P)



SIRE BOWEN KYOOMA K27'S EBV -MAY 2019 HEREFORD GROUP BREEDPLAN

CED	CEM	GL	BW	200d	400d	600d	Mcw	Milk	SS	CWT	EMA	Rib	Rump	RBY	IMF	SELECTION INDEXES			
																SM	Grass	Grain	EU
-2.8	+5.5	-0.1	+5.3	+35	+60	+87	+93	+8	+1.8	+55	+5.5	+2.1	+3.5	-0.4	+2.2				
																+\$117	+\$116	+\$152	+\$131

Traits Observed:

Notes: A complete young son of Kyooma K27 he is one of the youngest in the sale draft, you have to love him for his sound structure, cosmetics, carcass & type.

Purchaser: \$

**LOT
28**

BOWEN NEPHEW N026 (PP)

BWNN026

Born: 22/7/17 Age in Months: 24.0 mths

Eye Pigment: 100-100

Tattoo: N026

KOANUI ROCKET 0219 (IMP NZL) (P)
PINE HILL CROSSFIRE C558 (AI) (P)
PINE HILL GHOST MAPLE W16 (AI) (P)

SIRE: YAVENVALE JET FIRE J032 (PP)

KURRAJONG PARK B144 (P)
YAVENVALE EMPRESS G320 (P)
YAVENVALE EMPRESS C340 (H#)

BBSF 3K RANCHMAN 18R (IMP CAN) (PP)
BOWEN COWBOY C245 (AI) (ET) (PP)
BOWEN ROLLINA N61 (P)

DAM: BOWEN ROLLINA K56 (P)

KENYA KIDMAN (P)
BOWEN ROLLINA E221 (AI) (P)
BOWEN ROLLINA X14 (P)



MAY 2019 HEREFORD GROUP BREEDPLAN

CED	CEM	GL	BW	200d	400d	600d	Mcw	Milk	SS	CWT	EMA	Rib	Rump	RBY	IMF	SELECTION INDEXES			
																SM	Grass	Grain	EU
+1.5	+5.1	-3.1	+3.5	+34	+58	+79	+60	+20	+1.2	+56	+3.9	+0.5	+0.5	+1.7	+0.3				
45%	33%	62%	67%	66%	66%	69%	60%	47%	62%	58%	50%	54%	58%	52%	54%	+\$99	+\$95	+\$106	+\$107

Traits Observed: CE,200WT,600WT,FAT,EMA,IMF,Genomics

Notes: Nephew N026 exhibits the softness & attributes typical of the Jet Fire J032 progeny. He is lower birth weight sire, EBVs rated within the breed top 10% short gestation & RBY, top 15% milk with good fats, EMA, carc.wt & \$indexes.

Purchaser: \$

**LOT
29**

BOWEN NARRANDERA N025 (AI) (PP)

BWNN025

Born: 2/7/17

Age in Months: 24.5 mths

Eye Pigment: 100-100

Tattoo: N025

KOANUI ROCKET 0219 (IMP NZL) (P)
PINE HILL CROSSFIRE C558 (AI) (P)
PINE HILL GHOST MAPLE W16 (AI) (P)

SIRE: YAVENVALE JET FIRE J032 (PP)

KURRAJONG PARK B144 (P)
YAVENVALE EMPRESS G320 (P)
YAVENVALE EMPRESS C340 (H#)

MAUNGAHINA KINGDOM BAY 070073 (IMP NZL) (P)
BOWEN FORT WORTH F44 (AI) (P)
BOWEN TRICEL B100 (P)

DAM: BOWEN MAPLE K157 (P)

DEBARRY SCHOONER (S)
BOWEN MAPLE G153 (P)
BOWEN MAPLE Z168 (P)



MAY 2019 HEREFORD GROUP BREEDPLAN

CED	CEM	GL	BW	200d	400d	600d	Mcv	Milk	SS	CWT	EMA	Rib	Rump	RBY	IMF	SELECTION INDEXES			
																SM	Grass	Grain	EU
+4.8	+5.2	-0.7	+1.9	+26	+42	+57	+57	+14	+0.9	+41	+1.5	-0.5	-1.3	+1.0	+0.0				
44%	31%	73%	66%	66%	66%	69%	60%	45%	61%	57%	50%	53%	58%	51%	53%	+\$66	+\$63	+\$64	+\$74

Traits Observed: GL,CE,200WT,600WT,FAT,EMA,IMF,Genomics

Notes: Narrandera N025 is soft as butter & is very correct in his structure, excellent low birth weight data rated within the breed top 15%.

Purchaser: \$

**LOT
30**

BOWEN NIGHTMAN N099 (PP)

BWNN099

Born: 3/8/17

Age in Months: 23.5 mths

Eye Pigment: 100-100

Tattoo: N099

KOANUI ROCKET 0219 (IMP NZL) (P)
PINE HILL CROSSFIRE C558 (AI) (P)
PINE HILL GHOST MAPLE W16 (AI) (P)

SIRE: YAVENVALE JET FIRE J032 (PP)

KURRAJONG PARK B144 (P)
YAVENVALE EMPRESS G320 (P)
YAVENVALE EMPRESS C340 (H#)

TYCOLAH WARRIOR (PP)
TYCOLAH ZORRO (P)
TYCOLAH YUTTONG R85 (H#)

DAM: BOWEN MAPLE D249 (AI) (ET) (P)

VALMA SOUTHERN STAR (AI) (ET) (PP)
BOWEN MAPLE P111 (P)
BOWEN MAPLE H140 (P)



MAY 2019 HEREFORD GROUP BREEDPLAN

CED	CEM	GL	BW	200d	400d	600d	Mcv	Milk	SS	CWT	EMA	Rib	Rump	RBY	IMF	SELECTION INDEXES			
																SM	Grass	Grain	EU
+4.0	+2.8	-2.4	+2.9	+30	+58	+73	+64	+12	+0.8	+55	+4.6	+0.8	+1.1	+1.1	+0.8				
48%	37%	63%	68%	67%	68%	70%	63%	52%	63%	60%	52%	55%	59%	53%	55%	+\$99	+\$98	+\$115	+\$111

Traits Observed: CE,200WT,600WT,FAT,EMA,IMF,Genomics

Notes: Nightman N099 has excellent structure with a great profile & from a great cow family, he is the third son from Maple D249 to be offered at a Bowen Bull sale. His data covers all bases, EBVs rated within the breed top 10% Gest. L., top 15% EMA, good low birth wt., IMF, RBY, fats & \$indexes.

Purchaser: \$

**LOT
31**

BOWEN NECESSARY N093 (AI) (P)

BWNN093

Born: 26/7/17

Age in Months: 23.5 mths

Eye Pigment: 100-100

Tattoo: N093

KOANUI ROCKET 0219 (IMP NZL) (P)
PINE HILL CROSSFIRE C558 (AI) (P)
PINE HILL GHOST MAPLE W16 (AI) (P)

SIRE: YAVENVALE JET FIRE J032 (PP)

KURRAJONG PARK B144 (P)
YAVENVALE EMPRESS G320 (P)
YAVENVALE EMPRESS C340 (H#)

ALLENDALE NATIONAL W168 (PP)
BOWEN DIAMANTINA D203 (AI) (PP)
BOWEN MATCHLESS Z152 (AI) (P)

DAM: BOWEN URSULA H220 (P)

BRAXTON GIANT 1 (IMP NZ) (IMP NZL) (P)
PEAKES URSULA Z286 (AI) (P)
KAYNE URSULA W7 (P)



SIRE: YAVENVALE JET FIRE J032 (PP)

MAY 2019 HEREFORD GROUP BREEDPLAN

CED	CEM	GL	BW	200d	400d	600d	Mcw	Milk	SS	CWT	EMA	Rib	Rump	RBV	IMF	SELECTION INDEXES			
+0.0	-1.7	-1.8	+4.0	+35	+63	+87	+69	+14	+2.4	+58	+3.6	+1.0	+1.4	+0.7	+1.3	SM	Grass	Grain	EU
47%	36%	75%	68%	67%	67%	70%	62%	49%	63%	59%	51%	54%	59%	53%	54%	+\$106	+\$103	+\$130	+\$117

Traits Observed: GL,CE,200WT,600WT,FAT,EMA,IMF,Genomics

Notes: Jet Fire J032 son with lower birthweight data with short gestation, excellent 400d weight data, fats, EMA & \$indexes. IMF data rated top 10% of the breed.

Purchaser: \$

**LOT
32**

BOWEN NASSATT N008 (AI) (PP)

BWNN008

Born: 2/7/17

Age in Months: 24.5 mths

Eye Pigment: 100-100

Tattoo: N008

KOANUI ROCKET 0219 (IMP NZL) (P)
PINE HILL CROSSFIRE C558 (AI) (P)
PINE HILL GHOST MAPLE W16 (AI) (P)

SIRE: YAVENVALE JET FIRE J032 (PP)

KURRAJONG PARK B144 (P)
YAVENVALE EMPRESS G320 (P)
YAVENVALE EMPRESS C340 (H#)

ALLENDALE WATERHOUSE D1 (PP)
DAYS CALIBRE G74 (PP)
ALLENDALE DAWN C62 (AI) (P)

DAM: BOWEN MATCHLESS K166 (P)

DXB 7C BLOCKBUSTER 3K (IMP CAN) (P)
BOWEN MATCHLESS B186 (AI) (ET) (P)
BOWEN MATCHLESS S238 (AI) (ET) (P)

MAY 2019 HEREFORD GROUP BREEDPLAN

CED	CEM	GL	BW	200d	400d	600d	Mcw	Milk	SS	CWT	EMA	Rib	Rump	RBV	IMF	SELECTION INDEXES			
+4.0	+6.1	-1.1	+4.3	+37	+59	+84	+76	+20	+2.8	+55	+3.8	+0.2	+0.1	+1.1	+0.7	SM	Grass	Grain	EU
47%	35%	74%	67%	66%	67%	69%	61%	47%	62%	58%	51%	54%	59%	52%	54%	+\$106	+\$102	+\$118	+\$117

Traits Observed: GL,CE,200WT,600WT,FAT,EMA,IMF,Genomics

Notes: Volume sire with excellent weight for age from the prominent breeding Matchless cow line. The sire lines of Jet Fire J032 crossed with Calibre G74 is giving us great carcass with calving ease. EBVs rated within the breed top 15% milk & scrotal, moderate birth & short gestation, good IMF, RBV, EMA, carc.wt. & \$ indexes.

Purchaser: \$

LOT
33

BOWEN NEWGATE N023 (AI) (PP)

BWNN023

Born: 1/7/17

Age in Months: 24.5 mths

Eye Pigment: 100-100

Tattoo: N023

KOANUI ROCKET 0219 (IMP NZL) (P)
PINE HILL CROSSFIRE C558 (AI) (P)
PINE HILL GHOST MAPLE W16 (AI) (P)

SIRE: YAVENVALE JET FIRE J032 (PP)

KURRAJONG PARK B144 (P)
YAVENVALE EMPRESS G320 (P)
YAVENVALE EMPRESS C340 (H#)

BOWEN DIAMANTINA D203 (AI) (PP)
BOWEN GWYDIR G222 (AI) (ET) (PP)
BOWEN ROLLINA Y186 (AI) (P)

DAM: BOWEN HARMONY K153 (P)

BOWEN TORNADO Z260 (AI) (ET) (PP)
BOWEN HARMONY E190 (P)
BOWEN HARMONY B279 (H)



SIRE: YAVENVALE JET FIRE J032 (PP)

MAY 2019 HEREFORD GROUP BREEDPLAN

CED	CEM	GL	BW	200d	400d	600d	Mcw	Milk	SS	CWT	EMA	Rib	Rump	RBV	IMF	SELECTION INDEXES			
-4.3	-3.0	-1.4	+4.8	+35	+63	+87	+74	+18	+1.6	+58	+3.6	-0.3	-0.7	+1.8	+0.0	SM	Grass	Grain	EU
44%	31%	73%	66%	65%	66%	69%	60%	44%	60%	57%	50%	53%	58%	51%	53%	+\$82	+\$76	+\$83	+\$90

Traits Observed: GL,CE,200WT,600WT,FAT,EMA,IMF,Genomics

Notes: Long smooth bodied with the slick skin typical of the Jet Fire J032 progeny. Newgate N023 was at the top end for weight at weaning he has shorter gestation & moderate birth weight EBVs rated within breed top 10% RBV, good carcass, EMA, RBV & milk data.

Purchaser: \$

LOT
34

BOWEN NEGOTIATOR N217 (PP)

BWNN217

Born: 30/7/17

Age in Months: 23.5 mths

Eye Pigment: 100-100

Tattoo: N217

GRASSMERE SPARK 330 (P)
GRASSMERE SPARK 555 (IMP NZL) (PP)
GRASSMERE PRINCESS 245 (P)

SIRE: BOWEN SPARK K082 (AI) (S)

BRAYBOOK CHEROKEE C200 (AI) (P)
BOWEN CHERRY RIPE F101 (P)
BOWEN CHERRY RIPE A271 (P)

CAPETHORNE HOT SHOT 03 22 (P)
MATARIKI HOLY - SMOKE (IMP NZL) (P)
MATARIKI GIRLIE 00323 (P)

DAM: BOWEN MAPLE J26 (AI) (P)

BOWEN CROWN PRINCE C330 (AI) (P)
BOWEN MAPLE G36 (P)
BOWEN MAPLE B177 (AI) (ET) (P)



MAY 2019 HEREFORD GROUP BREEDPLAN

CED	CEM	GL	BW	200d	400d	600d	Mcw	Milk	SS	CWT	EMA	Rib	Rump	RBV	IMF	SELECTION INDEXES			
+0.2	+3.7	-0.9	+5.1	+35	+57	+76	+65	+13	+1.1	+50	+4.9	+1.5	+2.1	+0.3	+1.7	SM	Grass	Grain	EU
39%	35%	57%	60%	61%	62%	66%	58%	48%	59%	55%	48%	51%	55%	50%	48%	+\$106	+\$106	+\$138	+\$121

Traits Observed: CE,200WT,600WT,FAT,EMA,IMF,Genomics

Notes: Upstanding strong headed stout son of Spark K82 with soft clean skin. His pedigree offers a high content of New Zealand blood lines. Great data set, EBVs rated within the breed top 5% IMF, top 10% EMA & rib, rump fats with good \$indexes.

Purchaser: \$

**LOT
35**

BOWEN NORTHY N202 (P)

BWNN202

Born: 6/9/17

Age in Months: 22.5 mths

Eye Pigment: 100-100

Tattoo: N202

GRASSMERE SPARK 330 (P)
GRASSMERE SPARK 555 (IMP NZL) (PP)
GRASSMERE PRINCESS 245 (P)

SIRE: BOWEN SPARK K204 (AI) (ET) (PP)

KOANUI ROCKET 0219 (IMP NZL) (P)
BOWEN FLORRIE F23 (AI) (P)
BOWEN FLORRIE C91 (P)

TYCOLAH ZORRO (P)
BOWEN CAULFIELD C264 (AI) (ET) (P)
WIRANYA RHODA Q25 (AI) (P)

DAM: BOWEN GLEAM H157 (P)

BOWEN LEGION Z190 (P)
PEAKES GLEAM D76 (P)
PEAKES GLEAM Z192 (P)



MAY 2019 HEREFORD GROUP BREEDPLAN

CED	CEM	GL	BW	200d	400d	600d	Mcw	Milk	SS	CWT	EMA	Rib	Rump	RBV	IMF	SELECTION INDEXES			
-0.1	+2.6	+1.3	+6.8	+40	+69	+102	+107	+10	+1.8	+61	+3.7	+0.0	-0.1	+1.0	+1.0	SM	Grass	Grain	EU
36%	31%	50%	62%	60%	59%	62%	55%	47%	56%	51%	42%	48%	51%	45%	47%	+\$105	+\$99	+\$119	+\$116

Traits Observed: 200WT,600WT,FAT,EMA,IMF,Genomics

Notes: Northy N202 is long bodied & correct in structure he has excellent weight. His dams line originating from the great Kenya Gleam cow family. EBVs rated with in the breed top 10% or better 200 to 600d & mat. cow wt. ,his IMF & carcass wt. rated in the top 15%, good \$indexes & EMA.

Purchaser: \$

**LOT
36**

BOWEN NORTH N054 (PP)

BWNN054

Born: 13/8/17

Age in Months: 23.0 mths

Eye Pigment: 100-100

Tattoo: N054

GRASSMERE SPARK 330 (P)
GRASSMERE SPARK 555 (IMP NZL) (PP)
GRASSMERE PRINCESS 245 (P)

SIRE: BOWEN SPARK K204 (AI) (ET) (PP)

KOANUI ROCKET 0219 (IMP NZL) (P)
BOWEN FLORRIE F23 (AI) (P)
BOWEN FLORRIE C91 (P)

BOWEN ROXBOROUGH R266 (AI) (ET) (P)
BOWEN URALBA U160 (P)
ALLENDALE MARLINE L72 (P)

DAM: BOWEN ROLLINA B385 (P)

BURANDO BRAVEHEART T59 (P)
BOWEN ROLLINA Y73 (P)
BOWEN ROLLINA T90 (P)



MAY 2019 HEREFORD GROUP BREEDPLAN

CED	CEM	GL	BW	200d	400d	600d	Mcw	Milk	SS	CWT	EMA	Rib	Rump	RBV	IMF	SELECTION INDEXES			
+3.5	+6.6	-2.4	+3.9	+35	+57	+90	+82	+16	+2.2	+59	+3.8	+0.7	+0.9	+1.1	+0.9	SM	Grass	Grain	EU
43%	36%	56%	64%	64%	65%	69%	61%	50%	62%	58%	50%	53%	57%	52%	51%	+\$112	+\$108	+\$126	+\$121

Traits Observed: CE,200WT,600WT,FAT,EMA,IMF,Genomics

Notes: Check out his data, lower birth weight & shorter gestation with good fats IMF, RBV & \$ indexes. A volume Spark K204 son with exceptional balanced data, donor dam Rollina B385 has been a top of the range breeder with sons selling to a top of \$40,000 for Bowen Extremist E96 in 2011.

Purchaser: \$

LOT
37

BOWEN NAVY N159 (AI) (PP)

BWNN159

Born: 30/6/17

Age in Months: 24.5 mths

Eye Pigment: 100-100

Tattoo: N159

ANCHOR BRAXTON (P)
JB 531 BRAXTON CAL 605U (P)
JB 793 LADY VOO 531S (P)

SIRE: HILLS-GALORE ENTERPRISE 20C (IMP CAN) (PP)

HILLS-GALORE COWBOY 87T (P)
HILLS-GALORE 105P STAR 95W (P)
HILLS-GALORE 32G DELTA 105P (P)

BRAXTON GIANT THUNDER S138 (IMP NZL) (P)
BOWEN TORNADO Z260 (AI) (ET) (PP)
BOWEN TRICEL P180 (P)

DAM: BOWEN FANCY D23 (P)

BOWEN SOUTHERN SUN W99 (P)
BOWEN FANCY Z153 (AI) (P)
BOWEN FANCY U302 (P)

MAY 2019 HEREFORD GROUP BREEDPLAN

CED	CEM	GL	BW	200d	400d	600d	Mcw	Milk	SS	CWT	EMA	Rib	Rump	RBY	IMF	SELECTION INDEXES			
																SM	Grass	Grain	EU
-1.7	-3.3	+0.0	+4.6	+28	+46	+63	+76	+10	+2.3	+34	+1.1	+0.3	-0.4	+0.0	-0.2				
31%	26%	51%	58%	59%	60%	65%	55%	40%	53%	51%	43%	47%	51%	44%	43%	+\$56	+\$50	+\$50	+\$65

Traits Observed: CE,200WT,600WT,FAT,EMA,IMF,Genomics

Notes: Strong sire with outcross pedigree. Combining the Hills-Galore Enterprise 20C sire (from the real common-sense enterprise of Alvin Pawliza's Hill Galore stock farm in Canada, focusing on maternal lines & calving ease). His pedigree also contains the powerful Fancy cow line.

Purchaser: \$

LOT
38

BOWEN NIMBLE N281 (P)

BWNN281

Born: 1/8/17

Age in Months: 23.5 mths

Eye Pigment: 100-100

Tattoo: N281

KOANUI ROCKET 0219 (IMP NZL) (P)
PINE HILL CROSSFIRE C558 (AI) (P)
PINE HILL GHOST MAPLE W16 (AI) (P)

SIRE: YAVENVALE JET FIRE J032 (PP)

KURRAJONG PARK B144 (P)
YAVENVALE EMPRESS G320 (P)
YAVENVALE EMPRESS C340 (H#)

BOWEN MINISTER Y168 (S)
STUDBROOK PRINCE B034 (S)
BOWEN PRINCESS T65 (P)

DAM: BOWEN MATCHLESS D292 (P)

ALLENDALE OCTAGONAL (AI) (P)
BOWEN MATCHLESS Y195 (P)
BOWEN MATCHLESS V15 (AI) (P)



SIRE: YAVENVALE JET FIRE J032 (PP)

MAY 2019 HEREFORD GROUP BREEDPLAN

CED	CEM	GL	BW	200d	400d	600d	Mcw	Milk	SS	CWT	EMA	Rib	Rump	RBY	IMF	SELECTION INDEXES			
																SM	Grass	Grain	EU
+0.3	+0.7	-0.8	+3.7	+31	+56	+80	+66	+19	+2.9	+52	+3.7	-0.2	-0.3	+1.5	+0.2				
46%	33%	63%	68%	67%	66%	67%	59%	50%	62%	56%	48%	53%	57%	49%	54%	+\$93	+\$89	+\$101	+\$104

Traits Observed: CE,200WT,600WT,FAT,EMA,IMF,Genomics

Notes: A long upstanding sire that covers a lot of ground from a powerful cow family, dam Matchless D292 produced sons averaging \$14,000 at Bowen Bull Sales. Good milk RBY & EMA with low birth weight & short gestation.

Purchaser: \$

**LOT
39**

BOWEN NOLAN N226 (PP)

BWNN226

Born: 2/9/17

Age in Months: 22.5 mths

Eye Pigment: 100-100

Tattoo: N226

ALLENDALE TIPPERARY D13 (AI) (ET) (P)
DAYS WIZARD F84 (P)
ALLENDALE DAWN Z21 (AI) (P)

SIRE: THE RANCH TIPPERARY J06 (AI) (PP)

KIDMAN TAIT C194 (P)
THE RANCH SUSAN F02 (P)
THE RANCH SUSAN C82 (P)

KENYA KIDMAN (P)
BOWEN ARGYLE A355 (AI) (S)
BOWEN VIRTUE S307 (P)

DAM: BOWEN MATCHLESS G194 (AI) (ET) (P)

BOWEN TORNADO Z260 (AI) (ET) (PP)
RILO PARK MATCHLESS C10 (AI) (ET) (P)
BOWEN MATCHLESS L140 (AI) (P)



SIRE: THE RANCH TIPPERARY J06 (AI) (PP)

MAY 2019 HEREFORD GROUP BREEDPLAN

CED	CEM	GL	BW	200d	400d	600d	Mcw	Milk	SS	CWT	EMA	Rib	Rump	RBY	IMF	SELECTION INDEXES			
																SM	Grass	Grain	EU
-5.9	-4.2	+0.9	+4.9	+32	+46	+62	+45	+12	+1.1	+39	+2.8	+1.4	+2.0	+0.0	+0.7				
41%	31%	51%	67%	65%	64%	65%	58%	45%	60%	54%	46%	50%	54%	47%	51%	+\$64	+\$62	+\$76	+\$71

Traits Observed: 200WT,600WT,FAT,EMA,IMF,Genomics

Notes: Nolan N226 is a combination of the powerful Matchless cow family & his sire The Ranch Tipperary was awarded Intermediate Champion at the 2015 Dubbo National, maternal Brother sold in 2018 Bowen Bull Sale. EBVs rated within the breed top 10% rib & rump with good IMF.

Purchaser: \$

**LOT
40**

BOWEN NICOL N291 (S)

BWNN291

Born: 27/8/17

Age in Months: 22.5 mths

Eye Pigment: 100-100

Tattoo: N291

KOANUI ROCKET 0219 (IMP NZL) (P)
PINE HILL CROSSFIRE C558 (AI) (P)
PINE HILL GHOST MAPLE W16 (AI) (P)

SIRE: YAVENVALE JET FIRE J032 (PP)

KURRAJONG PARK B144 (P)
YAVENVALE EMPRESS G320 (P)
YAVENVALE EMPRESS C340 (H#)

BRAYBOOK CHEROKEE C200 (AI) (P)
BOWEN FRONTIER F314 (P)
BOWEN HILDA W188 (P)

DAM: BOWEN DELICIOUS J242 (P)

LOMA LANGI VERSACE (P)
BOWEN DELICIOUS Z305 (P)
BOWEN DELICIOUS W140 (P)

MAY 2019 HEREFORD GROUP BREEDPLAN

CED	CEM	GL	BW	200d	400d	600d	Mcw	Milk	SS	CWT	EMA	Rib	Rump	RBY	IMF	SELECTION INDEXES			
																SM	Grass	Grain	EU
+2.0	+3.3	-2.8	+3.7	+30	+48	+64	+57	+17	+1.4	+42	+3.1	-0.3	-0.5	+1.5	-0.1				
44%	31%	61%	67%	66%	66%	69%	60%	46%	61%	57%	49%	53%	57%	51%	52%	+\$76	+\$72	+\$76	+\$86

Traits Observed: CE,200WT,600WT,FAT,EMA,IMF,Genomics

Notes: A high growth son of Jet Fire J032 with length & softness. Low birth & short gestation data rated within the breed top 10% & top 15% for RBY.

Purchaser: \$

**LOT
41**

BOWEN NAPIER N173 (AI) (P)

BWNN173

Born: 27/7/17

Age in Months: 23.5 mths

Eye Pigment: 100-100

Tattoo: N173

YARRAM HOT SHOT P028 (AI) (H)
CAPETHORNE HOT SHOT 03 22 (P)
CAPETHORNE AMETHYST U21 (P)

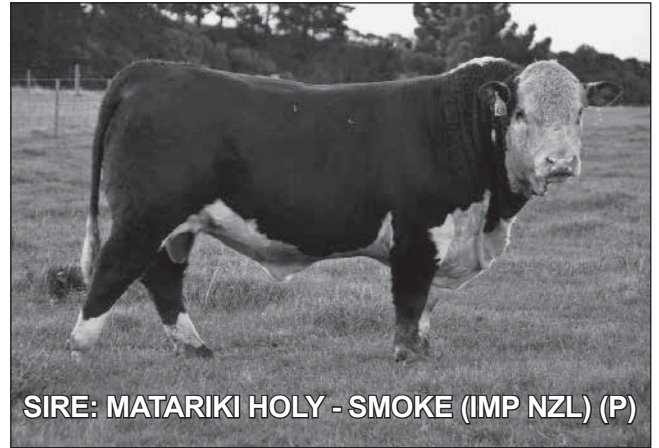
SIRE: MATARIKI HOLY - SMOKE (IMP NZL) (P)

KOANUI BULL'S-EYE R60 (P)
MATARIKI GIRLIE 00323 (P)
MATARIKI GIRLIE 3 (P)

SKY 236G PREMIER 132K (P)
OTAPAWA SKYMATE 2046 (IMP NZL) (ET) (P)
OTAPAWA LEONORA P23 (IMP NZL) (P)

DAM: BOWEN FLORRIE J300 (AI) (ET) (P)

KENYA KIDMAN (P)
BOWEN FANCY X57 (AI) (P)
BOWEN FANCY U2791 (AI) (P)



MAY 2019 HEREFORD GROUP BREEDPLAN

CED	CEM	GL	BW	200d	400d	600d	Mcw	Milk	SS	CWT	EMA	Rib	Rump	RBY	IMF	SELECTION INDEXES			
																SM	Grass	Grain	EU
-12.1	-2.9	-2.2	+5.9	+45	+71	+96	+86	+17	+2.2	+70	+4.9	+0.7	+0.6	+1.0	+1.2				
56%	52%	75%	68%	68%	68%	71%	65%	61%	65%	63%	57%	59%	62%	58%	58%	+\$93	+\$87	+\$113	+\$105

Traits Observed: GL,CE,200WT,600WT,FAT,EMA,IMF,Genomics

Notes: Napier N173 is a powerful volume young sire with excellent skin type, his progeny will yield well. Sired by the New Zealand Matariki Holy – Smoke sire. High \$ indexes, good rib, rump fats, milk & scrotal. EBVs rated within the breed top 10% of better for 200 to 600day wts. Carcass wt, EMA & IMF.

Purchaser: \$



**Congratulations to
The Holcombe
family from the
Rayleigh Stud**

**on the on the recent
success at the
58th Annual
Herefords Australia
National Show and Sale
held at the Dubbo on
the 4th of June.**

Rayleigh team of three bulls were all sired by Bowen Calibre K207 purchased by the Holcombe family at the Bowen Bull Sale in 2016 for the record price of \$70,000. Winning results included Intermediate & grand champion with Rayleigh Nullabor N069, reserve senior champion with Rayleigh Nostradamus N047. Rayleigh topped off their successful morning in the show ring by being awarded the President's Shield for the top team of three bulls.