

The entire proceeds from this bull will be split 3 ways between the Ruby Mae Foundation, Westpac Helicopter Service & The Stuart Peake Memorial Cancer Research Trust. Refer to page 7 for Charity information.

**LOT
39**

PEAKES BOWEN QUARTERBACK T764 PV

HBR

Born: 30/08/2022

AMF,CAF,DDF,NHF,DWF,MAF,MHF,OH
F,OSF,RGF

Tattoo-Brand: T764

EVT22T764



LOT 39 Sire - MURDEDUKE QUARTERBACK Q011

LAWSONS MOMENTOUS M518
SIRE: MURDEDUKE QUARTERBACK Q011
 MURDEDUKE BARUNAH N026
 HIGHLANDER OF STERN NZ
DAM: PEAKES ABIGAIL G68
 PEAKES ABIGAIL E78

Notes: Quarterback T764 is a stylish soft mobile sire. This year we are offering the first of our Quarterback Q011 sons. We selected his dam Abigail G68 to enter our embryo transfer program in 2021. She is a beautiful cow with an impeccable pedigree that we rate very highly featuring New Zealand sire Highlander of Stern her dam Abigail E78 was sired by In Focus B115. The progeny from these sires are super soft, very easy doing & their daughters make sound hardy matrons. Quarterback T764 maternal brothers have sold to \$18K twice averaging \$12,600 for his seven maternal brothers sold. We retained his maternal brother Regal Focus R586 as a stud sire. His full ET brothers in this years sale are T776 Lot 81, T762 Lot 129 & T770 Lot 132.

STRUCTURAL ASSESSMENT									
CLAW SET FRONT	CLAW SET REAR	FRONT FEET ANGLE	REAR FEET ANGLE	REAR LEGS SIDE VIEW	REAR LEGS HINDVIEW	SCROTAL (cm)	TEMP.	SHEATH	
7	6	6	6	6	6	40	1	4	

MID MAY 2024 TRANSTASMAN ANGUS CATTLE EVALUATION

CED	CEM	GL	BW	200d	400d	600d	Mcw	Milk	SS	CWT	EMA	Rib	Rump	RBY	IMF	SELECTION INDEXES			
																ABI	Dom.	Grain	Grass
+6.3	+0.6	-6.7	+4.4	+50.0	+86.0	+111.0	+111.0	+18.0	+4.4	+70.0	+4.3	-1.0	-0.7	+0.3	+1.6	\$177	\$151	\$228	\$161
70%	61%	83%	83%	84%	82%	83%	80%	76%	81%	73%	73%	72%	73%	64%	76%				



Purchaser: \$

LOT 40

PEAKES BOWEN REGAL FOCUS T845 SV

HBR

Born: 20/08/2022

AMF,CAF,DDF,NHF,DWF,MAF,MHF,OH
F,OSF,RGF

Tattoo-Brand: T845

EVT22T845



TUWHARETOA REGENT D145
SIRE: PEAKES BOWEN REGAL FOCUS P746
 PEAKES LOWAN K685
 CONNEALY ALL AROUND
DAM: PEAKES NEW DESIGN J740
 LAWSONS NEW DESIGN Z1003

Notes: Regal Focus T845 is well balanced & very stylish, he has a real barrel of thickness. Rating highly for his EMA, docility, growth & RBV evaluations. He is from a very sound breeding female. Her five sons have sold to average \$15,600 to a top of \$28K. The sons from Regal Focus P746 averaged \$16k in the 2023 Bowen bull sale.

STRUCTURAL ASSESSMENT					
CLAW SET FRONT	CLAW SET REAR	FRONT FEET ANGLE	REAR FEET ANGLE		
6	5	5	6		
REAR LEGS SIDE VIEW	REAR LEGS HIND VIEW	SCROTAL (cm)	TEMP.	SHEATH	
5	5	40	1	5	

MID MAY 2024 TRANSTASMAN ANGUS CATTLE EVALUATION

CED	CEM	GL	BW	200d	400d	600d	Mcw	Milk	SS	CWT	EMA	Rib	Rump	RBV	IMF	SELECTION INDEXES			
-0.7	+3.8	-1.9	+5.7	+57.0	+101.0	+133.0	+108.0	+29.0	+1.7	+73.0	+11.5	-1.9	-3.6	+1.0	+2.1	ABI	Dom.	Grain	Grass
63%	55%	81%	80%	82%	80%	81%	77%	73%	78%	69%	68%	68%	69%	60%	73%	\$194	\$151	\$270	\$174



Purchaser: \$

LOT 41

PEAKES BOWEN QOUNTDOWN T805 PV

HBR

Born: 30/08/2022

AMF,CAF,DDF,NHF,DWF,MAF,MHF,OH
F,OSF,RGF

Tattoo-Brand: T805

EVT22T805



TE MANIA KIRBY K138
SIRE: TE MANIA QOUNTDOWN Q1290
 TE MANIA BARUNAH J513
 KANSAS EVIDENTLY J81
DAM: PEAKES BOWEN PINNACLE P762
 PEAKES PINNACLE H579

Notes: Qountdown T805 has super soft skin & has an IMF rating in the top 2% of the breed. He is from a cracking cow. His pedigree features the top maternal lines of Barunah, Annie & Pinnacle. His maternal brother sold for \$20K in 2022 Bowen bull sale. Grand dam Pinnacle H579 has had 3 sons selling to average \$15k & a daughter sold in our 2022 Bowen female sale for \$22K. Note he has a very small spot of white in front of his testicles.

STRUCTURAL ASSESSMENT					
CLAW SET FRONT	CLAW SET REAR	FRONT FEET ANGLE	REAR FEET ANGLE		
6	5	5	6		
REAR LEGS SIDE VIEW	REAR LEGS HIND VIEW	SCROTAL (cm)	TEMP.	SHEATH	
5	5	41	1	4	

MID MAY 2024 TRANSTASMAN ANGUS CATTLE EVALUATION

CED	CEM	GL	BW	200d	400d	600d	Mcw	Milk	SS	CWT	EMA	Rib	Rump	RBV	IMF	SELECTION INDEXES			
-3.0	-3.9	+0.3	+6.8	+51.0	+90.0	+118.0	+115.0	+17.0	+2.4	+60.0	+4.0	+2.7	+1.6	-1.3	+5.8	ABI	Dom.	Grain	Grass
63%	54%	81%	81%	82%	80%	81%	77%	73%	78%	70%	69%	68%	70%	60%	74%	\$194	\$148	\$274	\$182



Purchaser: \$

LOT 42

PEAKES BOWEN REALITY T683 SV

HBR

Born: 25/08/2022

AMF,CAF,DDF,NHF,DWF,MAF,MHF,OH
F,OSF,RGF

Tattoo-Brand: T683

EVT22T683



PEAKES REALITY K697
SIRE: PEAKES BOWEN REALITY P841
 PEAKES BOWEN ELINE L640
 KANSAS FATHOM F167
DAM: PEAKES BOWEN NUMERAL L778
 PEAKES NUMERAL G17

Notes: This Reality P841 son has a very stylish phenotype. He has excellent calving ease credentials with his low birth weight & short gestation. Rates highly for his IMF & structural data. At scanning he had the equal third highest EMA measurement in his mob. His maternal brothers have sold to \$12k & two maternal sisters have been retained in our stud.

STRUCTURAL ASSESSMENT					
CLAW SET FRONT	CLAW SET REAR	FRONT FEET ANGLE	REAR FEET ANGLE		
7	6	5	6		
REAR LEGS SIDE VIEW	REAR LEGS HIND VIEW	SCROTAL (cm)	TEMP.	SHEATH	
5	5	44	1	5	

MID MAY 2024 TRANSTASMAN ANGUS CATTLE EVALUATION

CED	CEM	GL	BW	200d	400d	600d	Mcw	Milk	SS	CWT	EMA	Rib	Rump	RBV	IMF	SELECTION INDEXES			
+3.8	-1.8	-9.5	+2.8	+50.0	+88.0	+123.0	+105.0	+18.0	+3.0	+63.0	+7.1	-1.2	-2.9	+0.7	+3.9	ABI	Dom.	Grain	Grass
64%	54%	81%	80%	82%	80%	81%	77%	73%	78%	69%	68%	68%	69%	59%	73%	\$182	\$133	\$252	\$167



Purchaser: \$

LOT
43

PEAKES BOWEN PROCEED T667^{SV}

HBR

Born: 21/07/2022

AMF,CAF,DDF,NHF,DWF,MAF,MHF,OH
F,OSF,RGF

Tattoo-Brand: T667

EVT22T667



H P C A PROCEED
SIRE: MILWILLAH PROCEED P745
MILWILLAH LOWAN H48
MATAURI REALITY 839 NZ
DAM: PEAKES BOWEN ABIGAIL M747
PEAKES ABIGAIL K614

Notes: A very deep bodied son of Proceed P745 with plenty of capacity. His data evaluations for foot structure are excellent. He rates highly for EMA & RBY and has a moderate birth weight & shorter gestation data evaluation. At scanning he had the equal highest EMA measurement in his mob. Maternal brother sold in 2023 Bowen bull sale \$12K, maternal sister sold in 2022 at our Bowen heifer sale \$6k.

STRUCTURAL ASSESSMENT					
CLAW SET FRONT	CLAW SET REAR	FRONT FEET ANGLE	REAR FEET ANGLE		
6	5	5	6		
REAR LEGS SIDE VIEW	REAR LEGS HINDVIEW	SCROTAL (cm)	TEMP.	SHEATH	
5	5	42	1	5	

MID MAY 2024 TRANSTASMAN ANGUS CATTLE EVALUATION

CED	CEM	GL	BW	200d	400d	600d	Mcw	Milk	SS	CWT	EMA	Rib	Rump	RBY	IMF	SELECTION INDEXES			
-3.1	+4.8	-6.2	+4.8	+53.0	+92.0	+123.0	+121.0	+15.0	+2.9	+73.0	+10.2	-3.6	-3.0	+1.4	+0.6	ABI	Dom.	Grain	Grass
64%	55%	81%	81%	82%	80%	81%	77%	73%	79%	70%	69%	69%	70%	61%	74%	\$167	\$140	\$216	\$153



Purchaser: \$

LOT
44

PEAKES BOWEN QUARTERBACK T609^{SV}

HBR

Born: 20/07/2022

AMF,CAF,DDF,NHF,DWF,MAF,MHF,OH
F,OSF,RGF

Tattoo-Brand: T609

EVT22T609

STRUCTURAL ASSESSMENT								
CLAW SET FRONT	CLAW SET REAR	FRONT FEET ANGLE	REAR FEET ANGLE	REAR LEGS SIDE VIEW	REAR LEGS HINDVIEW	SCROTAL (cm)	TEMP.	SHEATH
6	5	6	5	5	5	46	1	5

LAWSONS MOMENTOUS M518
SIRE: MURDEDUKE QUARTERBACK Q011
MURDEDUKE BARUNAH N026

MATAURI REALITY 839 NZ
DAM: PEAKES BOWEN ENNA N821
PEAKES BOWEN ENNA L752

Notes:

Quarterback T609 has fantastic skin & hair, he is our most powerful son of Quarterback Q011. He will breed powerful sons with plenty of grunt. He has very highly rated data evaluations for growth, carcass & IMF. With short gestation & a moderate birth weight weighing 38kg at birth. At weaning he was the third heaviest in his mob. His two maternal brothers have sold to average \$13k and a maternal sister retained in our stud.

MID MAY 2024 TRANSTASMAN ANGUS CATTLE EVALUATION

CED	CEM	GL	BW	200d	400d	600d	Mcw	Milk	SS	CWT	EMA	Rib	Rump	RBY	IMF	SELECTION INDEXES			
+4.9	+3.1	-6.7	+4.4	+61.0	+115.0	+143.0	+139.0	+23.0	+4.8	+81.0	+4.0	-0.1	+1.6	-0.7	+4.2	ABI	Dom.	Grain	Grass
69%	60%	83%	82%	83%	81%	82%	79%	75%	80%	72%	71%	71%	72%	63%	75%	\$221	\$183	\$310	\$208



Purchaser: \$

LOT
45

PEAKES BOWEN BLACK PEARL T620^{SV}

HBR

Born: 27/07/2022

AMF,CAF,DDF,NHF,DWF,MAF,MHF,OH
F,OSF,RGF

Tattoo-Brand: T620

EVT22T620



SYDGEN BLACK PEARL 2006
SIRE: KAROO BLACK PEARL L125
KAROO MONTANA J263
TE MANIA GARTH G67
DAM: PEAKES BOWEN ABIGAIL N590
PEAKES ABIGAIL J532

Notes: Black Pearl T620 has the classic soft silky slick skin that his sire continues to replicate, he is a high capacity bull with sheer volume. In March he had the second heaviest weight & the equal third highest EMA measurement in his mob. Two maternal brothers have sold to average \$25k. Maternal brother Highlander R564 sold to Merridale Angus Stud \$36k in 2022 Bowen bull sale.

STRUCTURAL ASSESSMENT					
CLAW SET FRONT	CLAW SET REAR	FRONT FEET ANGLE	REAR FEET ANGLE		
6	5	5	6		
REAR LEGS SIDE VIEW	REAR LEGS HINDVIEW	SCROTAL (cm)	TEMP.	SHEATH	
6	5	42	1	5	

MID MAY 2024 TRANSTASMAN ANGUS CATTLE EVALUATION

CED	CEM	GL	BW	200d	400d	600d	Mcw	Milk	SS	CWT	EMA	Rib	Rump	RBY	IMF	SELECTION INDEXES			
-5.4	-6.9	-1.8	+7.1	+57.0	+103.0	+145.0	+130.0	+20.0	+2.5	+89.0	+6.7	+1.2	+2.7	0.0	+1.4	ABI	Dom.	Grain	Grass
65%	57%	82%	81%	82%	80%	81%	77%	74%	78%	70%	69%	69%	70%	61%	74%	\$172	\$127	\$233	\$157



Purchaser: \$

LOT 46 **PEAKES BOWEN REALITY T670 SV** **HBR**
 Born: 11/07/2022 AMF,CAF,DDF,NHF,DWF,MAF,MHF,OH F,OSF,RGF Tattoo-Brand: T670 **EVT22T670**



PEAKES REALITY K697
SIRE: PEAKES BOWEN REALITY P841
 PEAKES BOWEN ELINE L640
 BRAVEHEART OF STERN NZ
DAM: PEAKES BOWEN VICKY N535
 PEAKES VICKY K625

Notes: Reality T670 is classic angus sire with his sheer volume & terrific hind quarter. He has top end growth, carcass, foot structure & scrotal data evaluations. Maternal Brother sold for \$16K & maternal sister sold Bowen heifer sale in 2022 for \$18k.

STRUCTURAL ASSESSMENT								
CLAW SET FRONT	CLAW SET REAR	FRONT FEET ANGLE	REAR FEET ANGLE	REAR LEGS SIDE VIEW	REAR LEGS HINDVIEW	SCROTAL (cm)	TEMP.	SHEATH
6	5	6	6	5	5	43	1	5

MID MAY 2024 TRANSTASMAN ANGUS CATTLE EVALUATION

CED	CEM	GL	BW	200d	400d	600d	Mcw	Milk	SS	CWT	EMA	Rib	Rump	RBY	IMF	SELECTION INDEXES			
-6.3	-18.4	-5.9	+7.7	+63.0	+108.0	+148.0	+142.0	+13.0	+4.1	+85.0	+8.3	+0.4	+0.3	+0.4	+1.9	ABI	Dom.	Grain	Grass
67%	57%	83%	81%	83%	80%	81%	77%	73%	79%	70%	69%	69%	70%	61%	74%	\$170	\$128	\$233	\$155



Purchaser: \$

LOT 47 **PEAKES BOWEN BLACK PEARL T677 SV** **HBR**
 Born: 30/07/2022 AMF,CAF,DDF,NHF,DWF,MAF,MHF,OH F,OSF,RGF Tattoo-Brand: T677 **EVT22T677**

STRUCTURAL ASSESSMENT									
CLAW SET FRONT	CLAW SET REAR	FRONT FEET ANGLE	REAR FEET ANGLE	REAR LEGS SIDE VIEW	REAR LEGS HINDVIEW	SCROTAL (cm)	TEMP.	SHEATH	
7	6	5	6	5	5	41	1	5	

Notes:

Black Pearl T677 has a terrific temperament, great depth to his barrel & is super soft. He had the equal second highest EMA measurement at scanning in his mob. Excels in growth, carcass weight & RBY data evaluations. His maternal brother sold \$10k & three maternal sisters have been retained in stud.

SYDGEN BLACK PEARL 2006
SIRE: KAROO BLACK PEARL L125
 KAROO MONTANA J263
 MILWILLAH IN FOCUS B115
DAM: PEAKES ENNA J608
 PEAKES ENNA G15

MID MAY 2024 TRANSTASMAN ANGUS CATTLE EVALUATION

CED	CEM	GL	BW	200d	400d	600d	Mcw	Milk	SS	CWT	EMA	Rib	Rump	RBY	IMF	SELECTION INDEXES			
-5.1	-7.9	-4.0	+7.7	+60.0	+101.0	+139.0	+122.0	+14.0	+2.3	+85.0	+3.1	-1.7	-0.5	+0.6	+0.1	ABI	Dom.	Grain	Grass
64%	56%	81%	80%	82%	80%	81%	77%	74%	78%	69%	68%	68%	69%	60%	73%	\$166	\$135	\$215	\$151



Purchaser: \$

LOT 48 **PEAKES BOWEN PARATROOPER T649 SV** **HBR**
 Born: 05/07/2022 AMF,CAF,DDF,NHF,DWF,MAF,MHF,OH F,OSF,RGF Tattoo-Brand: T649 **EVT22T649**

STRUCTURAL ASSESSMENT									
CLAW SET FRONT	CLAW SET REAR	FRONT FEET ANGLE	REAR FEET ANGLE	REAR LEGS SIDE VIEW	REAR LEGS HINDVIEW	SCROTAL (cm)	TEMP.	SHEATH	
6	5	5	6	5	5	39	1	5	

Notes:

A Paratrooper son from the reliable Lowan cow family. Paratrooper T649 has a powerful sires presence, he is a very easy doing type of bull with fantastic structure & body depth. He had the highest IMF measurement in his mob at scanning. This young sire would be ideal for heifer joining with his data ratings at the top end of the breed for calving ease, he had an actual birth weight of 32kg.

EF COMMANDO 1366
SIRE: MILLAH MURRAH PARATROOPER P15
 MILLAH MURRAH ELA M9
 MATAURI REALITY 839 NZ
DAM: PEAKES BOWEN LOWAN M750
 PEAKES LOWAN K627

MID MAY 2024 TRANSTASMAN ANGUS CATTLE EVALUATION

CED	CEM	GL	BW	200d	400d	600d	Mcw	Milk	SS	CWT	EMA	Rib	Rump	RBY	IMF	SELECTION INDEXES			
+7.7	+8.5	-7.3	+0.5	+50.0	+87.0	+100.0	+79.0	+20.0	+1.5	+75.0	+7.3	+1.2	+0.5	+0.3	+2.1	ABI	Dom.	Grain	Grass
72%	63%	84%	83%	84%	82%	83%	80%	77%	81%	73%	72%	72%	73%	65%	76%	\$212	\$182	\$290	\$188



Purchaser: \$

LOT 49

PEAKES BOWEN IDENTITY T608 SV

HBR

Born: 26/07/2022

AMF,CAF,DDF,NHF,DWF,MAF,MHF,OH
F,OSF,RGF

Tattoo-Brand: T608

EVT22T608



KOUPALS B&B IDENTITY
SIRE: MILWILLAH IDENTITY P134
MILWILLAH BARUNAH K26
MATAURI OUTLIER F031 NZ
DAM: PEAKES BOWEN PINNACLE L715
PEAKES PINNACLE H527

Notes: Identity T608 has a soft slick skin with terrific structure & mobility. He has a pedigree stacked with calving ease sires. At scanning in March, he had the equal second highest EMA measurement in his mob. His maternal sister sold in our 2022 heifer sale \$7k. Sire Identity P134 has continued to impress us with his progeny. His sons have sold to \$32K & daughters have sold to \$36K in previous Bowen sales.

STRUCTURAL ASSESSMENT					
CLAW SET FRONT	CLAW SET REAR	FRONT FEET ANGLE	REAR FEET ANGLE		
6	5	5	5		
REAR LEGS SIDE VIEW	REAR LEGS HINDVIEW	SCROTAL (cm)	TEMP.	SHEATH	
5	5	41	2	4	

MID MAY 2024 TRANSTASMAN ANGUS CATTLE EVALUATION

CED	CEM	GL	BW	200d	400d	600d	Mcw	Milk	SS	CWT	EMA	Rib	Rump	RBV	IMF	SELECTION INDEXES			
-4.9	+2.3	-6.5	+6.6	+55.0	+91.0	+121.0	+123.0	+7.0	+2.0	+75.0	+7.2	+0.8	+1.7	0.0	+3.1	ABI	Dom.	Grain	Grass
66%	56%	83%	81%	83%	81%	81%	78%	74%	79%	70%	69%	69%	70%	62%	74%	\$196	\$157	\$262	\$181



Purchaser: \$

LOT 50

PEAKES BOWEN PRECEDENCE T560 SV

HBR

Born: 06/07/2022

AMF,CAF,DDF,NHF,DWF,MAF,MHF,OH
F,OSF,RGF

Tattoo-Brand: T560

EVT22T560



MATAURI REALITY 839 NZ
SIRE: KIDMAN PRECEDENCE K72
KIDMAN THELMA H15
TUWHARETOA REGENT D145
DAM: PEAKES NUMERAL K658
PEAKES NUMERAL F44

Notes: A natural calf from Donor dam Numeral K658. Maternal brother Novak R544 sold for the top price of \$40k at the 2022 Bowen bull sale. Maternal brother Total Focus Q674 retained as stud sire at Bowen. His data rates highly for IMF, fats, fertility & has short gestation with the low actual birth weight of 33kg. Note he has a small white patch in front of his testicles.

STRUCTURAL ASSESSMENT					
CLAW SET FRONT	CLAW SET REAR	FRONT FEET ANGLE	REAR FEET ANGLE		
6	5	5	6		
REAR LEGS SIDE VIEW	REAR LEGS HINDVIEW	SCROTAL (cm)	TEMP.	SHEATH	
6	5	40	1	5	

MID MAY 2024 TRANSTASMAN ANGUS CATTLE EVALUATION

CED	CEM	GL	BW	200d	400d	600d	Mcw	Milk	SS	CWT	EMA	Rib	Rump	RBV	IMF	SELECTION INDEXES			
+1.8	-1.3	-7.2	+4.4	+49.0	+89.0	+109.0	+121.0	+15.0	+3.7	+46.0	+6.9	+2.0	+1.3	+0.4	+3.6	ABI	Dom.	Grain	Grass
67%	59%	82%	82%	83%	81%	82%	78%	75%	79%	71%	70%	70%	71%	62%	75%	\$207	\$177	\$273	\$192



Purchaser: \$

LOT 51

PEAKES BOWEN BLACK PEARL T640 SV

HBR

Born: 06/07/2022

AMF,CAF,DDF,NHF,DWF,MAF,MHF,OH
F,OSF,RGF

Tattoo-Brand: T640

EVT22T640



SYDGEN BLACK PEARL 2006
SIRE: KAROO BLACK PEARL L125
KAROO MONTANA J263
MATAURI REALITY 839 NZ
DAM: PEAKES ABIGAIL K675
PEAKES ABIGAIL H532

Notes: Black Pearl T640 is the sixth son from Abigail K675 to be offered for sale. His full brother sold in 2023 Bowen Bull sale \$18k. His data evaluations are at the top end of the breed for foot structure, fats, milk & calving ease with an actual birth weight of 34kg. Note he has a white patch in front of his testicles.

STRUCTURAL ASSESSMENT					
CLAW SET FRONT	CLAW SET REAR	FRONT FEET ANGLE	REAR FEET ANGLE		
6	5	5	6		
REAR LEGS SIDE VIEW	REAR LEGS HINDVIEW	SCROTAL (cm)	TEMP.	SHEATH	
6	5	42	1	4	

MID MAY 2024 TRANSTASMAN ANGUS CATTLE EVALUATION

CED	CEM	GL	BW	200d	400d	600d	Mcw	Milk	SS	CWT	EMA	Rib	Rump	RBV	IMF	SELECTION INDEXES			
+3.6	+7.8	-5.7	+2.8	+34.0	+64.0	+83.0	+24.0	+26.0	+2.3	+57.0	+3.4	+3.1	+4.3	-0.5	+2.4	ABI	Dom.	Grain	Grass
67%	60%	83%	82%	84%	82%	82%	79%	76%	80%	72%	71%	71%	72%	63%	75%	\$191	\$151	\$252	\$175



Purchaser: \$

LOT 52 **PEAKES BOWEN REALITY T556^{PV}** **HBR**
 Born: 02/08/2022 AMF,CAF,DDF,NHF,DWF,MAF,MHF,O SF,RGF Tattoo-Brand: T556 **EVT22T556**

STRUCTURAL ASSESSMENT									
CLAW SET FRONT	CLAW SET REAR	FRONT FEET ANGLE	REAR FEET ANGLE	REAR LEGS SIDE VIEW	REAR LEGS HINDVIEW	SCROTAL (cm)	TEMP.	SHEATH	
6	5	5	5	4	5	40	1	5	

Notes:

Reality P841 son with an impressive pedigree combination featuring sires Braveheart of Stern, Reality & Regent. A sound free moving bull with a terrific lower thigh. He has short gestation, high scrotal, growth & structural data ratings. His full brother sold in 2022 Bowen bull sale \$12K. Note he has a small white patch near his testicles.

PEAKES REALITY K697
SIRE: PEAKES BOWEN REALITY P841
 PEAKES BOWEN ELINE L640
 BRAVEHEART OF STERN NZ
DAM: PEAKES BOWEN ABIGAIL P642
 PEAKES ABIGAIL E31

MID MAY 2024 TRANSTASMAN ANGUS CATTLE EVALUATION

CED	CEM	GL	BW	200d	400d	600d	Mcw	Milk	SS	CWT	EMA	Rib	Rump	RBY	IMF	SELECTION INDEXES			
+1.5	+0.7	-7.5	+5.2	+55.0	+96.0	+133.0	+129.0	+12.0	+3.6	+75.0	+2.1	-0.1	-1.0	-0.3	+1.9	ABI	Dom.	Grain	Grass
66%	57%	82%	81%	83%	80%	81%	77%	74%	78%	69%	69%	68%	70%	60%	73%	\$134	\$98	\$189	\$117



Purchaser: \$

LOT 53 **PEAKES BOWEN REALITY T732^{PV}** **HBR**
 Born: 24/08/2022 AMF,CAF,DDF,NHC,DWF,MAF,MHF,OH F,OSF,RGF Tattoo-Brand: T732 **EVT22T732**



PEAKES REALITY K697
SIRE: PEAKES BOWEN REALITY P841
 PEAKES BOWEN ELINE L640
 ARDROSSAN DEFINITIVE D230
DAM: PEAKES MONA J541
 PEAKES MONA F90

Notes: Reality T732 will certainly take your eye with his very attractive phenotype & depth of body. His maternal brothers have sold to \$18K. Rates well for shorter gestation, mature cow weight, carcass weight, fertility & IMF.

STRUCTURAL ASSESSMENT									
CLAW SET FRONT	CLAW SET REAR	FRONT FEET ANGLE	REAR FEET ANGLE	REAR LEGS SIDE VIEW	REAR LEGS HINDVIEW	SCROTAL (cm)	TEMP.	SHEATH	
6	5	5	6	5	5	41	1	5	

MID MAY 2024 TRANSTASMAN ANGUS CATTLE EVALUATION

CED	CEM	GL	BW	200d	400d	600d	Mcw	Milk	SS	CWT	EMA	Rib	Rump	RBY	IMF	SELECTION INDEXES			
-12.8	-13.6	-6.7	+6.8	+56.0	+90.0	+130.0	+136.0	+7.0	+2.5	+74.0	+1.6	-0.6	-2.9	0.0	+2.6	ABI	Dom.	Grain	Grass
65%	55%	82%	81%	83%	80%	81%	77%	73%	78%	70%	69%	69%	70%	60%	74%	\$120	\$86	\$164	\$107



Purchaser: \$

LOT 54 **PEAKES BOWEN REGENT T716^{SV}** **HBR**
 Born: 19/07/2022 AMF,CAFU,DDF,NHF,DWF,MAF,MHF,O HF,OSF,RGF Tattoo-Brand: T716 **EVT22T716**

STRUCTURAL ASSESSMENT									
CLAW SET FRONT	CLAW SET REAR	FRONT FEET ANGLE	REAR FEET ANGLE	REAR LEGS SIDE VIEW	REAR LEGS HINDVIEW	SCROTAL (cm)	TEMP.	SHEATH	
6	5	5	6	5	5	41	1	5	

Notes:

Regent T716 had the equal third highest IMF measurement in his mob at scanning. He is a high yielding son of the breed leading sire Regent D145. Dam Heart G27 will calve again this spring at 13 years of age, it is pleasing to see such longevity in a female. Note he has a small white patch in front of his testicles.

TE MANIA AMBASSADOR A134
SIRE: TUWHARETOA REGENT D145
 LAWSONS HENRY VIII Y5
 HIGHLANDER OF STERN NZ
DAM: PEAKES HEART G27
 BOWEN HEART B10

MID MAY 2024 TRANSTASMAN ANGUS CATTLE EVALUATION

CED	CEM	GL	BW	200d	400d	600d	Mcw	Milk	SS	CWT	EMA	Rib	Rump	RBY	IMF	SELECTION INDEXES			
+0.1	-1.1	-4.8	+6.0	+48.0	+81.0	+112.0	+109.0	+15.0	+1.6	+74.0	+7.6	-4.1	-3.9	+1.4	+2.1	ABI	Dom.	Grain	Grass
72%	68%	83%	82%	84%	82%	82%	80%	78%	80%	75%	74%	74%	75%	69%	78%	\$158	\$123	\$210	\$141



Purchaser: \$

LOT 55

PEAKES BOWEN QUARTERBACK T586 SV

HBR

Born: 07/07/2022

AMF,CAF,DDF,NHF,DWF,MAF,MHF,OH
F,OSF,RGF

Tattoo-Brand: T586

EVT22T586



LOT 55 Sire - MURDEDUKE QUARTERBACK Q011

LAWSONS MOMENTOUS M518
SIRE: MURDEDUKE QUARTERBACK Q011
 MURDEDUKE BARUNAH N026
 PEAKES IN FOCUS H517
DAM: PEAKES BOWEN LEAH L720
 PEAKES LEAH L720

Notes: Quarterback T586 is a very tidy bull with terrific structure. He has low birth weight, short gestation, high fats & fertility. His IMF data evaluation is rated in the top 3% of the breed. Maternal sister sold in our 2022 heifer sale \$6500 & two maternal sisters have been retained.

STRUCTURAL ASSESSMENT					
CLAW SET FRONT	CLAW SET REAR	FRONT FEET ANGLE	REAR FEET ANGLE		
6	5	5	5		
REAR LEGS SIDE VIEW	REAR LEGS HINDVIEW	SCROTAL (cm)	TEMP.	SHEATH	
4	5	41	1	4	

MID MAY 2024 TRANSTASMAN ANGUS CATTLE EVALUATION

CED	CEM	GL	BW	200d	400d	600d	Mcw	Milk	SS	CWT	EMA	Rib	Rump	RBY	IMF	SELECTION INDEXES			
+6.5	+2.2	-9.0	+3.3	+46.0	+82.0	+98.0	+68.0	+18.0	+2.9	+59.0	+6.0	+2.3	+3.3	-0.2	+5.6	ABI	Dom.	Grain	Grass
68%	58%	83%	82%	83%	81%	82%	79%	74%	79%	72%	71%	71%	72%	62%	75%	\$270	\$225	\$362	\$259



Purchaser: \$

LOT 56

PEAKES BOWEN RAGNAR T676 SV

HBR

Born: 06/07/2022

AMF,CAF,DDF,NHF,DWF,MAF,MHF,O
SF,RGF

Tattoo-Brand: T676

EVT22T676

STRUCTURAL ASSESSMENT									
CLAW SET FRONT	CLAW SET REAR	FRONT FEET ANGLE	REAR FEET ANGLE	REAR LEGS SIDE VIEW	REAR LEGS HINDVIEW	SCROTAL (cm)	TEMP.	SHEATH	
6	5	5	6	5	6	37	1	5	

Notes:

Ragnar T676 has moderate birth & short gestation weighing 33kg at birth. He is deep & soft, a very easy doing type of bull. Sired by New Zealand sire Turiroa Ragnar who sold in 2020 for an on farm New Zealand record price of \$104,000. Dam Jestress G148 has been a sound breeder & will calve again this spring at 13 years of age, it is terrific to see longevity in a breeder. Maternal brothers have sold to \$12k.

TURIROA COMPLETE 16M013
SIRE: TURIROA RAGNAR 18P224
 TURIROA L090

G A R ULTIMATE
DAM: PEAKES JESTRESS G148
 MERRIGRANGE JESTRESS V37

MID MAY 2024 TRANSTASMAN ANGUS CATTLE EVALUATION

CED	CEM	GL	BW	200d	400d	600d	Mcw	Milk	SS	CWT	EMA	Rib	Rump	RBY	IMF	SELECTION INDEXES			
+4.1	+2.9	-7.6	+4.2	+47.0	+81.0	+103.0	+90.0	+21.0	+1.0	+62.0	+4.7	-0.1	+3.1	+0.8	-0.5	ABI	Dom.	Grain	Grass
65%	54%	84%	82%	83%	81%	82%	78%	73%	80%	70%	70%	70%	71%	63%	74%	\$172	\$145	\$226	\$149



Purchaser: \$

LOT 57

PEAKES BOWEN REALITY T675 SV

HBR

Born: 24/08/2022

AMF,CAF,DDF,NHF,DWF,MAF,MHF,OH
F,OSF,RGF

Tattoo-Brand: T675

EVT22T675



PEAKES REALITY K697
SIRE: PEAKES BOWEN REALITY P841
 PEAKES BOWEN ELINE L640
 PATHFINDER GENESIS G357
DAM: PEAKES BOWEN NUMERAL M796
 PEAKES NUMERAL H530

Notes: Reality T675 is deep soft & easy doing with a fabulous hindquarter. He has a maternally strong pedigree with the terrific cow families of Numeral, Eline & Dianna going back to the picture-perfect donor dam Numeral H530. His data is highly rated for scrotal, growth & carcass weight. Maternal brother sold in the 2023 Bowen bull sale \$28k.

STRUCTURAL ASSESSMENT					
CLAW SET FRONT	CLAW SET REAR	FRONT FEET ANGLE	REAR FEET ANGLE		
6	5	5	6		
REAR LEGS SIDE VIEW	REAR LEGS HINDVIEW	SCROTAL (cm)	TEMP.	SHEATH	
6	5	42	1	4	

MID MAY 2024 TRANSTASMAN ANGUS CATTLE EVALUATION

CED	CEM	GL	BW	200d	400d	600d	Mcw	Milk	SS	CWT	EMA	Rib	Rump	RBY	IMF	SELECTION INDEXES			
-9.0	-14.2	-5.3	+8.0	+65.0	+104.0	+148.0	+151.0	+14.0	+4.2	+85.0	+5.4	-0.9	-2.3	+0.7	-0.1	ABI	Dom.	Grain	Grass
66%	57%	82%	81%	83%	81%	81%	78%	74%	79%	70%	69%	69%	70%	61%	74%	\$129	\$98	\$173	\$116



Purchaser: \$

LOT 58

PEAKES BOWEN LAZARUS T624 SV

HBR

Born: 08/07/2022

AMF,CAF,DDF,NHF,DWF,MAF,MHF,OH
F,OSF,RGF

Tattoo-Brand: T624

EVT22T624



MATAURI REALITY 839 NZ
SIRE: TAIMATE LAZARUS L12
TAIMATE 1348 NZ
SILVEIRAS CONVERSION 8064
DAM: PEAKES BOWEN LOWAN L781
TE MANIA LOWAN Z461

Notes: Lazarus T624 sired by top performing New Zealand sire Lazarus L12, this son is super soft with plenty of power. He has highly rated data evaluations for growth, fertility, EMA & IMF. Maternal sister sold in our 2022 heifer sale \$7000.

STRUCTURAL ASSESSMENT					
CLAW SET FRONT	CLAW SET REAR	FRONT FEET ANGLE	REAR FEET ANGLE		
6	5	5	5		
REAR LEGS SIDE VIEW	REAR LEGS HINDVIEW	SCROTAL (cm)	TEMP.	SHEATH	
5	5	41	1	4	

MID MAY 2024 TRANSTASMAN ANGUS CATTLE EVALUATION

CED	CEM	GL	BW	200d	400d	600d	Mcw	Milk	SS	CWT	EMA	Rib	Rump	RBY	IMF	SELECTION INDEXES			
-10.6	-1.7	-4.7	+9.2	+58.0	+102.0	+130.0	+143.0	0.0	+3.0	+62.0	+6.9	-0.9	+1.1	+0.2	+2.7	ABI	Dom.	Grain	Grass
71%	63%	83%	82%	83%	82%	82%	80%	77%	80%	72%	72%	72%	72%	66%	75%	\$188	\$162	\$243	\$176



Purchaser: \$

LOT 59

PEAKES BOWEN QUARTERBACK T711 SV

HBR

Born: 22/07/2022

AMF,CAF,DDF,NHF,DWF,MAF,MHF,OH
F,OSF,RGF

Tattoo-Brand: T711

EVT22T711



LAWSONS MOMENTOUS M518
SIRE: MURDEDUKE QUARTERBACK Q011
MURDEDUKE BARUNAH N026
MILWILLAH ELSOM H283
DAM: PEAKES BOWEN NUMERAL L538
PEAKES NUMERAL H578

Notes: Quarterback T711 has a cracking set of data for calving ease, he has a very low birth weight and rates very highly for his IMF & fats evaluations. He has a super soft slick skin. At scanning his IMF measurement was the second highest in his mob. Note he has a very small spot of white near his testicles.

STRUCTURAL ASSESSMENT					
CLAW SET FRONT	CLAW SET REAR	FRONT FEET ANGLE	REAR FEET ANGLE		
6	5	5	6		
REAR LEGS SIDE VIEW	REAR LEGS HINDVIEW	SCROTAL (cm)	TEMP.	SHEATH	
6	5	41	1	5	

MID MAY 2024 TRANSTASMAN ANGUS CATTLE EVALUATION

CED	CEM	GL	BW	200d	400d	600d	Mcw	Milk	SS	CWT	EMA	Rib	Rump	RBY	IMF	SELECTION INDEXES			
+6.3	-2.7	-3.8	+1.6	+39.0	+82.0	+109.0	+94.0	+20.0	+2.2	+66.0	+6.1	+4.7	+5.5	-0.6	+4.9	ABI	Dom.	Grain	Grass
69%	59%	83%	82%	84%	82%	82%	79%	75%	80%	73%	72%	72%	73%	63%	76%	\$204	\$156	\$282	\$193



Purchaser: \$

LOT 60

PEAKES BOWEN PRIME MINISTER T591 SV

HBR

Born: 07/07/2022

AMF,CAF,DDF,NHF,DWF,MAF,MHF,OH
F,OSF,RGF

Tattoo-Brand: T591

EVT22T591



RENNYLEA NORL508
SIRE: DUNOON PRIME MINISTER P758
DUNOON JAPARA M1008
MILWILLAH IN FOCUS B115
DAM: PEAKES NUMERAL E63
PEAKES NUMERAL C30

Notes: Sired by the popular breed leading sire Dunoon Prime Minister P758 who sold for \$140,000. His dam Numeral E63 has been a very sound breeder with many daughters retained in our stud & sons selling to \$17k at previous Bowen bull sales. Data excels in short gestation with high EMA, RBY & structural evaluations.

STRUCTURAL ASSESSMENT					
CLAW SET FRONT	CLAW SET REAR	FRONT FEET ANGLE	REAR FEET ANGLE		
6	5	5	5		
REAR LEGS SIDE VIEW	REAR LEGS HINDVIEW	SCROTAL (cm)	TEMP.	SHEATH	
5	5	43	1	4	

LOT 60 Sire - DUNOON PRIME MINISTER P758

MID MAY 2024 TRANSTASMAN ANGUS CATTLE EVALUATION

CED	CEM	GL	BW	200d	400d	600d	Mcw	Milk	SS	CWT	EMA	Rib	Rump	RBY	IMF	SELECTION INDEXES			
-2.1	+1.6	-6.8	+7.3	+49.0	+86.0	+117.0	+114.0	+17.0	+3.7	+65.0	+10.0	-2.5	-3.4	+1.7	+0.9	ABI	Dom.	Grain	Grass
64%	53%	83%	82%	83%	81%	82%	77%	74%	79%	70%	69%	69%	70%	61%	73%	\$174	\$147	\$216	\$164



Purchaser: \$

LOT 61

PEAKES BOWEN QARARA T648 SV

HBR

Born: 06/07/2022

AMF,CAF,DDF,NHF,DWF,MAF,MHF,OH
F,OSF,RGF

Tattoo-Brand: T648

EVT22T648



LOT 61 Sire - TE MANIA QARARA Q514

TE MANIA KIRBY K138
SIRE: TE MANIA QARARA Q514
 TE MANIA BARUNAH L537
 TUWHARETOA REGENT D145
DAM: PEAKES ANNIE K711
 KANSAS ANNIE Y18

Notes: Qarara T648 has very high IMF & shorter gestation length data ratings, he weighed 34kg at birth. Maternal sister sold in 2022 Bowen heifer sale \$12k. Grand donor dam Annie Y18 combined with the Beac & Barunah cow family gives you a very sound maternal base for his daughters. Note he has small white patch in front of his testicles.

STRUCTURAL ASSESSMENT							
CLAW SET FRONT	CLAW SET REAR	FRONT FEET ANGLE	REAR FEET ANGLE	REAR LEGS SIDE VIEW	REAR LEGS HINDVIEW	SCROTAL (cm)	TEMP.
6	5	6	5	6	5	44	2
						SHEATH	5

MID MAY 2024 TRANSTASMAN ANGUS CATTLE EVALUATION

CED	CEM	GL	BW	200d	400d	600d	Mcw	Milk	SS	CWT	EMA	Rib	Rump	RBY	IMF	SELECTION INDEXES			
+1.7	+3.1	-7.2	+4.4	+47.0	+78.0	+102.0	+59.0	+24.0	+2.1	+79.0	+4.6	+1.2	+3.1	-0.5	+4.5	ABI	Dom.	Grain	Grass
67%	57%	83%	82%	83%	81%	82%	78%	74%	80%	71%	71%	70%	72%	63%	75%	\$260	\$209	\$342	\$248



Purchaser: \$

LOT 62

PEAKES BOWEN REGENT T735 SV

HBR

Born: 20/08/2022

AMF,CAF,DDF,NHF,DWF,MAF,MHF,OH
F,OSF,RGF

Tattoo-Brand: T735

EVT22T735



LOT 62 Sire - PEAKES BOWEN REGENT M517

TUWHARETOA REGENT D145
SIRE: PEAKES BOWEN REGENT M517
 PEAKES ABIGAIL G68
 MILWILLAH ULTRAVOX B100
DAM: PEAKES LEAH F99
 PEAKES LEAH C1

Notes: A powerful soft high yielding son of Regent M517 who will stack the weight into his progeny. Dam Leah F99 was a sound breeding cow with terrific longevity, a pleasing trait to see in a breeder. Maternal sister sold for \$6K in our 2022 Bowen Heifer sale & maternal brothers have sold to \$10K. Note he has a white patch in front of his testicles.

STRUCTURAL ASSESSMENT							
CLAW SET FRONT	CLAW SET REAR	FRONT FEET ANGLE	REAR FEET ANGLE	REAR LEGS SIDE VIEW	REAR LEGS HINDVIEW	SCROTAL (cm)	TEMP.
6	5	5	6	6	6	40	1
						SHEATH	5

MID MAY 2024 TRANSTASMAN ANGUS CATTLE EVALUATION

CED	CEM	GL	BW	200d	400d	600d	Mcw	Milk	SS	CWT	EMA	Rib	Rump	RBY	IMF	SELECTION INDEXES			
+2.8	+3.1	-5.5	+4.5	+45.0	+93.0	+139.0	+140.0	+17.0	+1.1	+81.0	+2.2	-1.5	-1.6	+0.8	+0.4	ABI	Dom.	Grain	Grass
65%	57%	82%	81%	83%	81%	82%	78%	75%	79%	71%	70%	70%	71%	62%	75%	\$137	\$109	\$171	\$135



Purchaser: \$

LOT 63

PEAKES BOWEN QOUNTDOWN T723 PV

HBR

Born: 16/08/2022

AMF,CAF,DDF,NHF,DWF,MAF,MHF,OH
F,OSF,RGF

Tattoo-Brand: T723

EVT22T723

STRUCTURAL ASSESSMENT							
CLAW SET FRONT	CLAW SET REAR	FRONT FEET ANGLE	REAR FEET ANGLE	REAR LEGS SIDE VIEW	REAR LEGS HINDVIEW	SCROTAL (cm)	TEMP.
6	5	5	6	6	6	40	2
						SHEATH	4

Notes:

Qountdown T723 is a strong powerful upstanding young sire, his high marbling credentials will keep his progeny in demand at the feedlot. His data offers high IMF, growth & foot structure data evaluations. Sire Qountdown Q1290 had a great carcass & his IMF data evaluation is rated in the top 2% of the breed. Note he has a small spot of white near his testicles.

TE MANIA KIRBY K138
SIRE: TE MANIA QOUNTDOWN Q1290
 TE MANIA BARUNAH J513
 KAROO BLACK PEARL L125
DAM: PEAKES BOWEN LULU P600
 PEAKES LULU K522

MID MAY 2024 TRANSTASMAN ANGUS CATTLE EVALUATION

CED	CEM	GL	BW	200d	400d	600d	Mcw	Milk	SS	CWT	EMA	Rib	Rump	RBY	IMF	SELECTION INDEXES			
-6.8	-2.0	-1.4	+8.8	+56.0	+102.0	+134.0	+127.0	+17.0	+2.1	+71.0	+4.3	+0.5	+0.6	-0.8	+4.5	ABI	Dom.	Grain	Grass
63%	54%	81%	81%	82%	80%	81%	77%	73%	78%	69%	69%	68%	70%	60%	73%	\$198	\$158	\$269	\$185



Purchaser: \$

LOT 64

PEAKES BOWEN REGENT T739 SV

HBR

Born: 12/08/2022

AMF,CAF,DDF,NHF,DWF,MAF,MHF,OH
F,OSF,RGF

Tattoo-Brand: T739

EVT22T739



LOT 64 Sire - PEAKES BOWEN REGENT M517

TUWHARETOA REGENT D145
SIRE: PEAKES BOWEN REGENT M517
 PEAKES ABIGAIL G68
 RENNYLEA EDMUND E11
DAM: PEAKES BOWEN DANDLOO M732
 PEAKES DANDLOO K551

Notes: Regent T739 is long, soft & easy doing with a terrific temperament. He has a terrific set of calving ease data with very low birth weight & short gestation evaluations. His maternal brothers have sold to \$18K. His sire Regent M517 is a tremendous sire that has bred extremely well, they are deep & soft with excellent weight for age.

STRUCTURAL ASSESSMENT					
CLAW SET FRONT	CLAW SET REAR	FRONT FEET ANGLE	REAR FEET ANGLE		
6	5	5	6		
REAR LEGS SIDE VIEW	REAR LEGS HIND VIEW	SCROTAL (cm)	TEMP.	SHEATH	
5	5	42	1	4	

MID MAY 2024 TRANSTASMAN ANGUS CATTLE EVALUATION

CED	CEM	GL	BW	200d	400d	600d	Mcw	Milk	SS	CWT	EMA	Rib	Rump	RBY	IMF	SELECTION INDEXES			
+8.3	0.0	-7.5	+2.1	+43.0	+75.0	+100.0	+79.0	+18.0	+2.7	+75.0	-0.5	+0.2	-3.4	+0.2	+2.5	ABI	Dom.	Grain	Grass
66%	59%	82%	81%	83%	81%	82%	78%	75%	79%	72%	71%	71%	72%	63%	75%	\$155	\$126	\$203	\$138



Purchaser: \$

LOT 65

PEAKES BOWEN REALITY T755 PV

HBR

Born: 01/08/2022

AMF,CAF,DDF,NHF,DWF,MAF,MHF,OH
F,OSF,RGF

Tattoo-Brand: T755

EVT22T755

STRUCTURAL ASSESSMENT									
CLAW SET FRONT	CLAW SET REAR	FRONT FEET ANGLE	REAR FEET ANGLE	REAR LEGS SIDE VIEW	REAR LEGS HIND VIEW	SCROTAL (cm)	TEMP.	SHEATH	
6	5	5	6	5	5	39	1	4	

Notes:

Reality T755 will breed deep soft progeny & will stack the weight into his steers. He has highly rated data for his growth, carcass weight & foot structure evaluations. His full sister sold at our 2022 Bowen heifer sale for \$7K. Note he has a white patch near his testicles.

PEAKES REALITY K697
SIRE: PEAKES BOWEN REALITY P841
 PEAKES BOWEN ELINE L640

MURDEDUKE KURRAJONG K18
DAM: PEAKES BOWEN LEAH P640
 PEAKES LEAH E115

MID MAY 2024 TRANSTASMAN ANGUS CATTLE EVALUATION

CED	CEM	GL	BW	200d	400d	600d	Mcw	Milk	SS	CWT	EMA	Rib	Rump	RBY	IMF	SELECTION INDEXES			
-14.9	-10.4	-4.5	+8.8	+59.0	+100.0	+141.0	+138.0	+11.0	+0.9	+91.0	+5.1	-3.0	-4.9	+0.8	+0.8	ABI	Dom.	Grain	Grass
66%	56%	82%	81%	83%	80%	81%	78%	74%	79%	70%	69%	69%	70%	61%	74%	\$92	\$63	\$135	\$75



Purchaser: \$

LOT 66

PEAKES BOWEN EDMUND T693 SV

HBR

Born: 18/07/2022

AMF,CAF,DDF,NHF,DWF,MAF,MHF,OH
F,OSF,RGF

Tattoo-Brand: T693

EVT22T693

STRUCTURAL ASSESSMENT									
CLAW SET FRONT	CLAW SET REAR	FRONT FEET ANGLE	REAR FEET ANGLE	REAR LEGS SIDE VIEW	REAR LEGS HIND VIEW	SCROTAL (cm)	TEMP.	SHEATH	
6	5	5	6	5	6	43	1	5	

Notes:

Elsom T693 has a powerful sires presence & is very smooth fronted for ease of calving. He has a low birth weight & high IMF data evaluation. At scanning he had the equal third highest EMA measurement in his mob.

MILWILLAH ELSOM H283
SIRE: PEAKES BOWEN ELSOM P773
 PEAKES CLEMYNTYNE K546

ARDROSSAN EQUATOR A241
DAM: PEAKES BUTTONS F21
 BOWEN BUTTONS Y19

MID MAY 2024 TRANSTASMAN ANGUS CATTLE EVALUATION

CED	CEM	GL	BW	200d	400d	600d	Mcw	Milk	SS	CWT	EMA	Rib	Rump	RBY	IMF	SELECTION INDEXES			
+6.9	+0.6	-2.3	+1.4	+40.0	+77.0	+107.0	+93.0	+27.0	+2.0	+67.0	+4.9	-4.3	-3.8	+0.9	+2.9	ABI	Dom.	Grain	Grass
64%	55%	82%	81%	82%	80%	81%	78%	74%	78%	71%	70%	70%	71%	61%	75%	\$158	\$120	\$211	\$141



Purchaser: \$

LOT 67 **PEAKES BOWEN REALITY T747 SV** **HBR**
 Born: 30/08/2022 AMF,CAF,DDC,NHF,DWF,MAF,MHF,OH F,OSF,RGF Tattoo-Brand: T747 **EVT22T747**

STRUCTURAL ASSESSMENT									
CLAW SET FRONT	CLAW SET REAR	FRONT FEET ANGLE	REAR FEET ANGLE	REAR LEGS SIDE VIEW	REAR LEGS HINDVIEW	SCROTAL (cm)	TEMP.	SHEATH	
6	5	5	6	6	6	42	1	4	

PEAKES REALITY K697
SIRE: PEAKES BOWEN REALITY P841
 PEAKES BOWEN ELINE L640
 CONNEALY ALL AROUND
DAM: PEAKES NEW DESIGN J723
 LAWSONS NEW DESIGN Z1003

Notes:

A very deep bodied, soft, slick skinned easy doing type of sire. His pedigree contains the three top shelf donor dams Dianna G45, Eline L640 & New Design Z1003 to give you a strong maternal base for his daughters. Reality T747 is the first son from dam New Design J723 to be offered for sale, we have retained her three daughters in our stud. He rates highly for his carcass weight, scrotal & structural data evaluations.

MID MAY 2024 TRANSTASMAN ANGUS CATTLE EVALUATION

CED	CEM	GL	BW	200d	400d	600d	Mcw	Milk	SS	CWT	EMA	Rib	Rump	RBY	IMF	SELECTION INDEXES			
-7.2	-6.0	-5.0	+5.6	+53.0	+89.0	+131.0	+104.0	+18.0	+3.2	+76.0	+6.4	-1.4	-2.6	+0.5	+2.6	ABI	Dom.	Grain	Grass
64%	54%	81%	80%	82%	79%	80%	76%	73%	78%	69%	67%	67%	69%	59%	72%	\$149	\$102	\$206	\$136



Purchaser: \$

LOT 68 **PEAKES BOWEN PROCEED T653 SV** **HBR**
 Born: 11/07/2022 AMF,CAF,DDC,NHF,DWF,MAF,MHF,OH F,OSF,RGF Tattoo-Brand: T653 **EVT22T653**



LOT 68 Sire - MILWILLAH PROCEED P745

H P C A PROCEED
SIRE: MILWILLAH PROCEED P745
 MILWILLAH LOWAN H48
 TUWHARETOA REGENT D145
DAM: PEAKES ANNIE K705
 KANSAS ANNIE Y18

Notes: Proceed T653 is a high yielding Proceed P745 son, his EMA & RBY data rates in the top 5% or better within the breed. Dam if from the top performing Annie cow family. Donor Grand dam Y18 left us many top females. Maternal brother sold in the 2019 Bowen bull sale to Karoo Angus stud for \$20K, we have two maternal sisters retained in our stud.

STRUCTURAL ASSESSMENT									
CLAW SET FRONT	CLAW SET REAR	FRONT FEET ANGLE	REAR FEET ANGLE	REAR LEGS SIDE VIEW	REAR LEGS HINDVIEW	SCROTAL (cm)	TEMP.	SHEATH	
6	5	5	6	5	5	42	1	5	

MID MAY 2024 TRANSTASMAN ANGUS CATTLE EVALUATION

CED	CEM	GL	BW	200d	400d	600d	Mcw	Milk	SS	CWT	EMA	Rib	Rump	RBY	IMF	SELECTION INDEXES			
-13.7	-9.0	+1.1	+7.2	+44.0	+75.0	+102.0	+88.0	+18.0	+2.8	+62.0	+12.4	-2.7	-1.7	+2.1	+0.5	ABI	Dom.	Grain	Grass
66%	58%	82%	81%	83%	81%	82%	78%	74%	79%	71%	70%	70%	71%	62%	75%	\$154	\$129	\$191	\$144



Purchaser: \$

LOT 69 **PEAKES BOWEN QARARA T576 SV** **HBR**
 Born: 08/07/2022 AMF,CAF,DDF,NHF,DWF,MAF,MHF,OH F,OSF,RGF Tattoo-Brand: T576 **EVT22T576**



TE MANIA KIRBY K138
SIRE: TE MANIA QARARA Q514
 TE MANIA BARUNAH L537
 EF COMPLEMENT 8088
DAM: PEAKES BOWEN DIANA L513
 PEAKES DIANA G45

Notes: Qarara T576 rates highly for fats, milk, IMF & structural data. It would be hard to find a better set of calving ease credentials with his very low birth weight & short gestation. He is very soft with a super slick skin. At scanning in March, he had the equal third highest IMF measurement in his mob. Maternal brother sold in 2022 Bowen bull sale \$22k.

STRUCTURAL ASSESSMENT									
CLAW SET FRONT	CLAW SET REAR	FRONT FEET ANGLE	REAR FEET ANGLE	REAR LEGS SIDE VIEW	REAR LEGS HINDVIEW	SCROTAL (cm)	TEMP.	SHEATH	
6	5	6	6	6	6	40	1	4	

MID MAY 2024 TRANSTASMAN ANGUS CATTLE EVALUATION

CED	CEM	GL	BW	200d	400d	600d	Mcw	Milk	SS	CWT	EMA	Rib	Rump	RBY	IMF	SELECTION INDEXES			
+7.1	+7.3	-7.5	+1.0	+47.0	+84.0	+109.0	+76.0	+26.0	+1.7	+67.0	+2.7	+2.1	+0.6	-0.8	+4.1	ABI	Dom.	Grain	Grass
66%	56%	83%	82%	83%	81%	82%	78%	73%	80%	71%	70%	70%	71%	62%	75%	\$233	\$189	\$310	\$218



Purchaser: \$

LOT 70 **PEAKES BOWEN TOTAL FOCUS T713 SV** **HBR**
 Born: 14/07/2022 AMF,CAF,DDF,NHF,DWF,MAF,MHF,OH F,OSF,RGF Tattoo-Brand: T713 **EVT22T713**

STRUCTURAL ASSESSMENT									
CLAW SET FRONT	CLAW SET REAR	FRONT FEET ANGLE	REAR FEET ANGLE	REAR LEGS SIDE VIEW	REAR LEGS HINDVIEW	SCROTAL (cm)	TEMP.	SHEATH	
6	5	5	6	5	5	41	1	5	

Notes:

Total Focus T713 has a tremendous powerful sires outlook, just what you want see in a sire when they are out with the cows. He is from a constant breeding cow in Mona J553, this is her fifth son to be offered for sale. Maternal brothers have sold to \$22K. His sire Total Focus M794 has bred many sale toppers over the years & left us some terrific females.

CUDLOBE TOTAL FOCUS 6A
SIRE: PEAKES BOWEN TOTAL FOCUS M794
 PEAKES ANNIE H692

BULLIAC FUSION F33
DAM: PEAKES MONA J553
 BOWEN MONA B77

MID MAY 2024 TRANSTASMAN ANGUS CATTLE EVALUATION

CED	CEM	GL	BW	200d	400d	600d	Mcw	Milk	SS	CWT	EMA	Rib	Rump	RBY	IMF	SELECTION INDEXES			
-4.5	+0.8	-6.1	+7.1	+55.0	+85.0	+111.0	+95.0	+11.0	+1.5	+58.0	+8.9	-0.3	-1.9	+1.0	+0.6	ABI	Dom.	Grain	Grass
65%	56%	83%	81%	83%	81%	82%	78%	74%	79%	71%	70%	70%	71%	61%	74%	\$176	\$145	\$231	\$156



Purchaser: \$

LOT 71 **PEAKES BOWEN QARARA T581 SV** **HBR**
 Born: 09/07/2022 AMF,CAF,DDF,NHF,DWF,MAF,MHF,OH F,OSF,RGF Tattoo-Brand: T581 **EVT22T581**



TE MANIA KIRBY K138
SIRE: TE MANIA QARARA Q514
 TE MANIA BARUNAH L537
 PEAKES REALITY K695
DAM: PEAKES BOWEN LEAH P842
 PEAKES LEAH L529

Notes: Qarara T581 has low birth & shorter gestation data rating with an actual birth weight of 34kg. He is the first son to be offered for sale from dam Leah P842, maternal sister has been retained in stud. We are very impressed with the first of our progeny from sire Qarara Q514, he is an outstanding sound sire rating very highly with in the breed for marbling, fertility & calving ease.

STRUCTURAL ASSESSMENT									
CLAW SET FRONT	CLAW SET REAR	FRONT FEET ANGLE	REAR FEET ANGLE	REAR LEGS SIDE VIEW	REAR LEGS HINDVIEW	SCROTAL (cm)	TEMP.	SHEATH	
7	6	5	6	5	5	42	1	4	

MID MAY 2024 TRANSTASMAN ANGUS CATTLE EVALUATION

CED	CEM	GL	BW	200d	400d	600d	Mcw	Milk	SS	CWT	EMA	Rib	Rump	RBY	IMF	SELECTION INDEXES			
+4.6	+8.5	-5.1	+3.6	+48.0	+81.0	+103.0	+97.0	+13.0	+4.2	+52.0	+2.4	-0.5	-1.4	-0.1	+2.8	ABI	Dom.	Grain	Grass
64%	53%	83%	81%	83%	80%	81%	77%	72%	79%	69%	69%	68%	69%	60%	73%	\$196	\$169	\$247	\$182



Purchaser: \$

LOT 72 **PEAKES BOWEN QOUNTDOWN T841 SV** **HBR**
 Born: 16/08/2022 AMF,CAC,DDF,NHF,DWF,MAF,MHF,OH F,OSF,RGF Tattoo-Brand: T841 **EVT22T841**

STRUCTURAL ASSESSMENT									
CLAW SET FRONT	CLAW SET REAR	FRONT FEET ANGLE	REAR FEET ANGLE	REAR LEGS SIDE VIEW	REAR LEGS HINDVIEW	SCROTAL (cm)	TEMP.	SHEATH	
6	5	5	6	6	6	39	1	5	

Notes:

Qountdown T841 has exceptional data for his growth, carcass weight, fats, IMF & structural evaluations. He is a very soft silky skinned sire with a very sound pedigree. Note he has a small white patch near his testicles & a small spot of white near his pizzle.

TE MANIA KIRBY K138
SIRE: TE MANIA QOUNTDOWN Q1290
 TE MANIA BARUNAH J513

KIDMAN PRECEDENCE K72
DAM: PEAKES BOWEN ABIGAIL Q581
 PEAKES ABIGAIL E31

MID MAY 2024 TRANSTASMAN ANGUS CATTLE EVALUATION

CED	CEM	GL	BW	200d	400d	600d	Mcw	Milk	SS	CWT	EMA	Rib	Rump	RBY	IMF	SELECTION INDEXES			
-6.8	-0.3	-3.4	+7.6	+66.0	+115.0	+145.0	+146.0	+16.0	+1.8	+82.0	+6.4	+2.4	+3.4	-0.8	+2.9	ABI	Dom.	Grain	Grass
63%	54%	81%	80%	82%	80%	80%	77%	73%	78%	69%	68%	68%	69%	59%	73%	\$210	\$172	\$294	\$193



Purchaser: \$

LOT 73

PEAKES BOWEN PRECEDENCE T752 PV

HBR

Born: 17/07/2022

AMF,CAF,DDF,NHF,DWF,MAF,MHF,OH
F,OSF,RGF

Tattoo-Brand: T752

EVT22T752



MATAURI REALITY 839 NZ
SIRE: KIDMAN PRECEDENCE K72
 KIDMAN THELMA H15
 MUSGRAVE BIG SKY
DAM: PEAKES BOWEN DIANNA P682
 PEAKES DIANNA K643

Notes: Precedence T752 has a sound data set rating highly for short gestation, low birth, high growth, carcass weight, fats & structural data evaluations. His two maternal brothers have sold to average \$23k.

STRUCTURAL ASSESSMENT					
CLAW SET FRONT	CLAW SET REAR	FRONT FEET ANGLE	REAR FEET ANGLE		
6	5	5	6		
REAR LEGS SIDE VIEW	REAR LEGS HIND VIEW	SCROTAL (cm)	TEMP.	SHEATH	
5	5	38	1	4	

MID MAY 2024 TRANSTASMAN ANGUS CATTLE EVALUATION

CED	CEM	GL	BW	200d	400d	600d	Mcw	Milk	SS	CWT	EMA	Rib	Rump	RBY	IMF	SELECTION INDEXES			
+0.6	+4.5	-8.2	+2.5	+50.0	+98.0	+126.0	+127.0	+18.0	+0.7	+81.0	+1.6	+3.1	+3.2	-0.6	+1.0	ABI	Dom.	Grain	Grass
66%	58%	82%	81%	83%	81%	81%	78%	75%	79%	71%	70%	69%	70%	62%	74%	\$168	\$142	\$223	\$149



Purchaser: \$

LOT 74

PEAKES BOWEN QOUNTDOWN T706 PV

HBR

Born: 26/07/2022

AMF,CAF,DDF,NHF,DWF,MAF,MHF,OH
F,OSF,RGF

Tattoo-Brand: T706

EVT22T706

STRUCTURAL ASSESSMENT									
CLAW SET FRONT	CLAW SET REAR	FRONT FEET ANGLE	REAR FEET ANGLE	REAR LEGS SIDE VIEW	REAR LEGS HIND VIEW	SCROTAL (cm)	TEMP.	SHEATH	
7	6	5	6	5	5	42	1	4	

Notes:

Qountdown T706 has fantastic depth & length to his body that will give you extra weight in his weaner progeny. He rates highly for growth weight, IMF & EMA. Sire Qountdown Q1290 had a great carcass & his IMF data evaluation is rated in the top 2% of the breed. The first sons of Q1290 sold as yearling bulls at our 2023 Bowen bull sale.

TE MANIA KIRBY K138
SIRE: TE MANIA QOUNTDOWN Q1290
 TE MANIA BARUNAH J513

CONNELY BLACK GRANITE
DAM: PEAKES BOWEN DIANA P822
 PEAKES BOWEN DIANA L605

MID MAY 2024 TRANSTASMAN ANGUS CATTLE EVALUATION

CED	CEM	GL	BW	200d	400d	600d	Mcw	Milk	SS	CWT	EMA	Rib	Rump	RBY	IMF	SELECTION INDEXES			
-9.5	-4.2	-4.1	+9.0	+56.0	+102.0	+122.0	+134.0	+5.0	+3.0	+64.0	+8.6	0.0	-1.5	+0.9	+2.5	ABI	Dom.	Grain	Grass
63%	54%	81%	81%	82%	80%	81%	77%	73%	78%	70%	69%	68%	70%	60%	74%	\$195	\$178	\$248	\$181



Purchaser: \$

LOT 75

PEAKES BOWEN IDENTITY T797 PV

HBR

Born: 20/08/2022

AMF,CAF,DDF,NHF,DWF,MAF,MHF,OH
F,OSF,RGF

Tattoo-Brand: T797

EVT22T797



LOT 75 Sire - MILWILLAH IDENTITY P134

KOUPALS B&B IDENTITY
SIRE: MILWILLAH IDENTITY P134
 MILWILLAH BARUNAH K26
 PEAKES BOWEN EDMUND L733
DAM: PEAKES BOWEN ABIGAIL P751
 PEAKES ABIGAIL H586

Notes: Identity T797 is very smooth fronted. He is highly rated for his IMF, fats & docility data evaluations. His sire Identity P134 has bred very well for us, his sons have sold to a top of \$32K & daughters have sold to \$22K.

STRUCTURAL ASSESSMENT					
CLAW SET FRONT	CLAW SET REAR	FRONT FEET ANGLE	REAR FEET ANGLE		
6	5	5	6		
REAR LEGS SIDE VIEW	REAR LEGS HIND VIEW	SCROTAL (cm)	TEMP.	SHEATH	
5	5	40	1	5	

MID MAY 2024 TRANSTASMAN ANGUS CATTLE EVALUATION

CED	CEM	GL	BW	200d	400d	600d	Mcw	Milk	SS	CWT	EMA	Rib	Rump	RBY	IMF	SELECTION INDEXES			
+2.6	+5.7	-4.9	+4.5	+48.0	+79.0	+101.0	+91.0	+11.0	+1.3	+62.0	+0.6	+3.7	+5.1	-1.5	+3.5	ABI	Dom.	Grain	Grass
64%	54%	82%	81%	82%	80%	81%	77%	73%	78%	69%	68%	68%	69%	60%	73%	\$206	\$168	\$275	\$190



Purchaser: \$

LOT 76 **PEAKES BOWEN IDENTITY T879 PV** **HBR**
 Born: 12/09/2022 AMF,CAF,DDF,NHF,DWF,MAF,MHF,OH F,OSF,RGF Tattoo-Brand: T879 **EVT22T879**

STRUCTURAL ASSESSMENT										
CLAW SET FRONT	CLAW SET REAR	FRONT FEET ANGLE	REAR FEET ANGLE	REAR LEGS SIDE VIEW	REAR LEGS HINDVIEW	SCROTAL (cm)	TEMP.	SHEATH		
6	5	5	6	6	5	40	1	5		

Notes:

Identity T879 is a high yielding young sire. He had the equal third highest EMA measurement in his mob at scanning. Sire Identity P134 sons at 2023 Bowen bull sale averaged \$15,500 selling to a top of \$24K. Note he has a small white patch near his testicles.

KOUPALS B&B IDENTITY
SIRE: MILWILLAH IDENTITY P134
 MILWILLAH BARUNAH K26
 TE MANIA GARTH G67
DAM: PEAKES BOWEN NUMERAL P559
 PEAKES NUMERAL G126

MID MAY 2024 TRANSTASMAN ANGUS CATTLE EVALUATION

CED	CEM	GL	BW	200d	400d	600d	Mcw	Milk	SS	CWT	EMA	Rib	Rump	RBY	IMF	SELECTION INDEXES			
-8.5	+1.3	-4.1	+8.0	+53.0	+87.0	+114.0	+113.0	+10.0	+1.8	+70.0	+10.4	-2.0	-1.9	+1.0	+2.0	ABI	Dom.	Grain	Grass
64%	55%	81%	80%	82%	80%	81%	77%	73%	78%	70%	69%	69%	70%	61%	73%	\$164	\$132	\$220	\$146



Purchaser: \$

LOT 77 **PEAKES BOWEN PRECEDENCE T721 SV** **HBR**
 Born: 25/07/2022 AMF,CAF,DDF,NHF,DWF,MAF,MHF,OH F,OSF,RGF Tattoo-Brand: T721 **EVT22T721**



LOT 77 Sire - KIDMAN PRECEDENCE K72

MATAURI REALITY 839 NZ
SIRE: KIDMAN PRECEDENCE K72
 KIDMAN THELMA H15
 HIGHLANDER OF STERN NZ
DAM: PEAKES DANDLOO G67
 PEAKES DANDLOO D70

Notes: Precedence T721 has great physical growth for age, he is long bodied & smooth fronted. He has a cracking set of calving ease credentials with his very low birth weight & short gestation data evaluations. His sire Precedence K72 has left us great females, very soft & easy doing. Maternal brothers have sold to \$10K. Note he has a small white patch in front of his testicles.

STRUCTURAL ASSESSMENT										
CLAW SET FRONT	CLAW SET REAR	FRONT FEET ANGLE	REAR FEET ANGLE	REAR LEGS SIDE VIEW	REAR LEGS HINDVIEW	SCROTAL (cm)	TEMP.	SHEATH		
7	6	5	6	5	6	41	1	4		

MID MAY 2024 TRANSTASMAN ANGUS CATTLE EVALUATION

CED	CEM	GL	BW	200d	400d	600d	Mcw	Milk	SS	CWT	EMA	Rib	Rump	RBY	IMF	SELECTION INDEXES			
+5.4	+4.6	-5.0	+2.0	+28.0	+55.0	+72.0	+66.0	+18.0	+1.6	+35.0	+3.0	+3.1	+2.3	+0.3	+1.0	ABI	Dom.	Grain	Grass
66%	57%	82%	81%	83%	81%	81%	78%	75%	79%	71%	69%	69%	70%	62%	74%	\$128	\$107	\$164	\$114



Purchaser: \$

LOT 78 **PEAKES BOWEN QOUNTDOWN T839 SV** **HBR**
 Born: 07/08/2022 AMF,CAF,DDF,NHF,DWF,MAF,MHF,OH F,OSF,RGF Tattoo-Brand: T839 **EVT22T839**

STRUCTURAL ASSESSMENT										
CLAW SET FRONT	CLAW SET REAR	FRONT FEET ANGLE	REAR FEET ANGLE	REAR LEGS SIDE VIEW	REAR LEGS HINDVIEW	SCROTAL (cm)	TEMP.	SHEATH		
6	5	5	6	5	6	43	1	4		

Notes:

Qountdown T839 has top of the tree data for IMF, growth & carcass evaluations. His pedigree contains the standout cow families of Lulu, Annie, Beeac & Barunah. Sire Qountdown Q1290 had a great carcass & his IMF data evaluation is rated in the top 2% of the breed.

TE MANIA KIRBY K138
SIRE: TE MANIA QOUNTDOWN Q1290
 TE MANIA BARUNAH J513
 PEAKES BOWEN TOTAL FOCUS M794
DAM: PEAKES BOWEN LULU Q529
 PEAKES LULU K512

MID MAY 2024 TRANSTASMAN ANGUS CATTLE EVALUATION

CED	CEM	GL	BW	200d	400d	600d	Mcw	Milk	SS	CWT	EMA	Rib	Rump	RBY	IMF	SELECTION INDEXES			
-13.0	+0.8	-3.2	+9.3	+64.0	+107.0	+147.0	+162.0	+11.0	+2.8	+80.0	+1.7	-1.6	-2.0	-0.5	+4.9	ABI	Dom.	Grain	Grass
63%	54%	81%	80%	82%	80%	80%	77%	73%	78%	69%	68%	68%	69%	59%	73%	\$184	\$143	\$248	\$172



Purchaser: \$

LOT 79

PEAKES BOWEN QUARTERBACK T603 SV

HBR

Born: 16/07/2022

AMF,CAF,DDF,NHF,DWF,MAF,MHF,OH
F,OSF,RGF

Tattoo-Brand: T603

EVT22T603



LOT 79 Sire - MURDEDUKE QUARTERBACK Q011

LAWSONS MOMENTOUS M518
SIRE: MURDEDUKE QUARTERBACK Q011
 MURDEDUKE BARUNAH N026
 RENNYLEA EDMUND E11
DAM: PEAKES BOWEN NUMERAL L728
 PEAKES NUMERAL H659

Notes: Quarterback T603 has a terrific data set for calving ease, growth, carcass weight, fats, IMF & structural evaluations. He offers an outcross pedigree with the first of Quarterback Q011 sons being offered this year. Dam Numeral L718 has been a consistent breeding Edmund E11 cow.

STRUCTURAL ASSESSMENT					
CLAW SET FRONT	CLAW SET REAR	FRONT FEET ANGLE	REAR FEET ANGLE		
6	5	6	6		
REAR LEGS SIDE VIEW	REAR LEGS HINDVIEW	SCROTAL (cm)	TEMP.	SHEATH	
4	6	41	1	4	

MID MAY 2024 TRANSTASMAN ANGUS CATTLE EVALUATION

CED	CEM	GL	BW	200d	400d	600d	Mcw	Milk	SS	CWT	EMA	Rib	Rump	RBY	IMF	SELECTION INDEXES			
+8.9	+2.9	-9.4	+2.1	+49.0	+98.0	+129.0	+142.0	+12.0	+2.3	+77.0	+2.0	+3.2	+2.8	-0.3	+2.5	ABI	Dom.	Grain	Grass
71%	63%	84%	83%	85%	83%	83%	81%	77%	81%	74%	74%	73%	75%	65%	78%	\$206	\$176	\$260	\$194



Purchaser: \$

LOT 80

PEAKES BOWEN PARATROOPER T692 SV

HBR

Born: 20/07/2022

AMF,CAF,DDF,NHF,DWF,MAF,MHF,OH
F,OSF,RGF

Tattoo-Brand: T692

EVT22T692



EF COMMANDO 1366
SIRE: MILLAH MURRAH PARATROOPER P15
 MILLAH MURRAH ELA M9
 KANSAS EVIDENTLY J81
DAM: PEAKES BOWEN ABIGAIL L632
 BOWEN ABIGAIL X13

Notes: An excellent Paratrooper P15 son with a superior high yielding carcass that visually impresses. He is from the reliable Abigail cow family. We used this young sire last spring over our heifers as yearling. Paratrooper T692 is the third son from Abigail L632 to be offered for sale, his maternal sister has been retained in our stud. His data is low birth weight, with high scrotal, EMA, RBY & foot structure evaluations.

STRUCTURAL ASSESSMENT					
CLAW SET FRONT	CLAW SET REAR	FRONT FEET ANGLE	REAR FEET ANGLE		
6	5	5	6		
REAR LEGS SIDE VIEW	REAR LEGS HINDVIEW	SCROTAL (cm)	TEMP.	SHEATH	
5	5	43	2	4	

MID MAY 2024 TRANSTASMAN ANGUS CATTLE EVALUATION

CED	CEM	GL	BW	200d	400d	600d	Mcw	Milk	SS	CWT	EMA	Rib	Rump	RBY	IMF	SELECTION INDEXES			
+4.1	-0.6	-3.7	+3.1	+45.0	+83.0	+98.0	+99.0	+15.0	+3.0	+64.0	+11.4	-0.2	-3.1	+1.9	+1.7	ABI	Dom.	Grain	Grass
70%	60%	83%	82%	83%	81%	82%	79%	75%	80%	71%	70%	70%	71%	63%	74%	\$189	\$169	\$243	\$170



Purchaser: \$

LOT 81

PEAKES BOWEN QUARTERBACK T776 PV

HBR

Born: 01/09/2022

AMF,CAF,DDF,NHF,DWF,MAF,MHF,OH
F,OSF,RGF

Tattoo-Brand: T776

EVT22T776



LAWSONS MOMENTOUS M518
SIRE: MURDEDUKE QUARTERBACK Q011
 MURDEDUKE BARUNAH N026
 HIGHLANDER OF STERN NZ
DAM: PEAKES ABIGAIL G68
 PEAKES ABIGAIL E78

Notes: We used Quarterback T776 last spring as over our yearling heifers, he is a quality slick skinned sire. He has a cracking set of data with his moderate birth weight & short gestation, excellent growth, carcass weight & IMF evaluations. Donor dam Abigail G68 has had seven sons selling to a top of \$18k twice. We retained his maternal brother Regal Focus R586 as a stud sire. Full embryo transfer brothers to T762 Lot 129 & T764 Lot 39 2024 Bowen Charity Bull. Note he has a small white spot in front of his testicles.

STRUCTURAL ASSESSMENT					
CLAW SET FRONT	CLAW SET REAR	FRONT FEET ANGLE	REAR FEET ANGLE		
6	6	5	6		
REAR LEGS SIDE VIEW	REAR LEGS HINDVIEW	SCROTAL (cm)	TEMP.	SHEATH	
5	5	44	1	5	

MID MAY 2024 TRANSTASMAN ANGUS CATTLE EVALUATION

CED	CEM	GL	BW	200d	400d	600d	Mcw	Milk	SS	CWT	EMA	Rib	Rump	RBY	IMF	SELECTION INDEXES			
+6.7	+1.8	-7.8	+4.1	+59.0	+110.0	+148.0	+154.0	+14.0	+3.7	+82.0	-0.9	-1.7	-0.3	-0.4	+3.3	ABI	Dom.	Grain	Grass
70%	61%	83%	83%	84%	82%	83%	80%	76%	81%	73%	73%	72%	73%	64%	76%	\$207	\$171	\$268	\$195



Purchaser: \$

LOT 82

PEAKES BOWEN QUARTER BACK T645 SV

HBR

Born: 05/07/2022

AMF,CAF,DDF,NHF,DWF,MAF,MHF,OH
F,OSF,RGF

Tattoo-Brand: T645

EVT22T645



LAWSONS MOMENTOUS M518
SIRE: MURDEDUKE QUARTERBACK Q011
 MURDEDUKE BARUNAH N026
 HIGHLANDER OF STERN NZ
DAM: PEAKES GRIDMAKER J552
 LAWSONS GRIDMAKER Y492

Notes: Quarterback T645 has terrific depth of body & is a very soft easy doing type of bull. We used him over our yearling heifers last spring. He is very short gestation and had a birth weight of 37kg. He has a high mature cow weight & fertility evaluation. His three maternal brothers have sold to a top of \$18k & his two maternal sisters have been retained in our stud.

STRUCTURAL ASSESSMENT					
CLAW SET FRONT	CLAW SET REAR	FRONT FEET ANGLE	REAR FEET ANGLE		
6	5	5	6		
REAR LEGS SIDE VIEW	REAR LEGS HINDVIEW	SCROTAL (cm)	TEMP.	SHEATH	
5	5	44	1	5	

MID MAY 2024 TRANSTASMAN ANGUS CATTLE EVALUATION

CED	CEM	GL	BW	200d	400d	600d	Mcw	Milk	SS	CWT	EMA	Rib	Rump	RBV	IMF	SELECTION INDEXES			
-5.3	-7.4	-9.3	+7.5	+51.0	+92.0	+123.0	+133.0	+13.0	+3.4	+56.0	+6.7	-0.3	-1.2	+0.3	+2.3	ABI	Dom.	Grain	Grass
69%	60%	83%	82%	83%	82%	82%	79%	75%	80%	72%	72%	71%	72%	63%	76%	\$157	\$129	\$203	\$144



Purchaser: \$

LOT 83

PEAKES BOWEN REGAL FOCUS T744 SV

HBR

Born: 09/07/2022

AMF,CAF,DDF,NHF,DWF,MAF,MHF,OH
F,OSF,RGF

Tattoo-Brand: T744

EVT22T744



TUWHARETOA REGENT D145
SIRE: PEAKES BOWEN REGAL FOCUS P746
 PEAKES LOWAN K685
 BRAVEHEART OF STERN NZ
DAM: PEAKES NUMERAL K653
 PEAKES NUMERAL E19

Notes: Regal Focus T744 has terrific data for low birth weight with highly rated evaluations for his EMA, fats, IMF & foot structure data. He has a maternally sound pedigree with the Lowan & Numeral cow families. Dam is a Braveheart of Stern daughter. His maternal brothers have sold to \$12K & his maternal sister sold for \$6500 at Bowen heifer sale in 2022.

STRUCTURAL ASSESSMENT					
CLAW SET FRONT	CLAW SET REAR	FRONT FEET ANGLE	REAR FEET ANGLE		
6	5	5	6		
REAR LEGS SIDE VIEW	REAR LEGS HINDVIEW	SCROTAL (cm)	TEMP.	SHEATH	
5	5	42	1	5	

MID MAY 2024 TRANSTASMAN ANGUS CATTLE EVALUATION

CED	CEM	GL	BW	200d	400d	600d	Mcw	Milk	SS	CWT	EMA	Rib	Rump	RBV	IMF	SELECTION INDEXES			
+4.8	-3.7	-3.3	+1.8	+33.0	+67.0	+93.0	+60.0	+22.0	+2.2	+58.0	+9.7	+1.8	+2.8	+0.7	+2.8	ABI	Dom.	Grain	Grass
64%	57%	81%	81%	82%	80%	81%	77%	73%	78%	69%	69%	68%	70%	61%	73%	\$186	\$141	\$245	\$173



Purchaser: \$

LOT 84

PEAKES BOWEN PROCEED T588 SV

HBR

Born: 25/07/2022

AMF,CAF,DDF,NHF,DWF,MAF,MHF,OH
F,OSF,RGF

Tattoo-Brand: T588

EVT22T588



H P C A PROCEED
SIRE: MILWILLAH PROCEED P745
 MILWILLAH LOWAN H48
 MILWILLAH LAD E158
DAM: PEAKES PINNACLE H579
 PEAKES PINNACLE E72

Notes: Proceed T588 would be the ideal bull to produce sound, high weight gain progeny. He is the fourth son from Pinnacle H579 to be offered for sale her sons sold have averaged \$15k & a daughter sold in our 2022 Bowen heifer sale for \$18K. His data rates highly for his structural evaluations.

STRUCTURAL ASSESSMENT					
CLAW SET FRONT	CLAW SET REAR	FRONT FEET ANGLE	REAR FEET ANGLE		
6	5	5	6		
REAR LEGS SIDE VIEW	REAR LEGS HINDVIEW	SCROTAL (cm)	TEMP.	SHEATH	
5	5	41	1	5	

MID MAY 2024 TRANSTASMAN ANGUS CATTLE EVALUATION

CED	CEM	GL	BW	200d	400d	600d	Mcw	Milk	SS	CWT	EMA	Rib	Rump	RBV	IMF	SELECTION INDEXES			
-11.5	-1.9	-4.6	+7.4	+53.0	+92.0	+122.0	+123.0	+24.0	+2.1	+63.0	+4.7	-1.6	-3.1	+0.7	+1.4	ABI	Dom.	Grain	Grass
64%	54%	81%	81%	83%	80%	81%	77%	74%	79%	70%	69%	69%	70%	61%	74%	\$121	\$96	\$169	\$102



Purchaser: \$

LOT 85 **PEAKES BOWEN IDENTITY T749 SV** **HBR**
 Born: 01/09/2022 AMF,CAF,DDF,NHF,DWF,MAF,MHF,OH F,OSF,RGF Tattoo-Brand: T749 **EVT22T749**

STRUCTURAL ASSESSMENT									
CLAW SET FRONT	CLAW SET REAR	FRONT FEET ANGLE	REAR FEET ANGLE	REAR LEGS SIDE VIEW	REAR LEGS HINDVIEW	SCROTAL (cm)	TEMP.	SHEATH	
6	5	5	6	5	5	41	1	4	

Notes:

This Identity P134 son is smooth fronted & as long as a train. His full sister sold in Bowen 2022 heifer sale to Yallambie Angus for \$36k. He offers great spread of data for growth, fertility, fats, IMF & structural evaluations.

KOUPALS B&B IDENTITY
SIRE: MILWILLAH IDENTITY P134
 MILWILLAH BARUNAH K26
 TE MANIA GARTH G67
DAM: PEAKES BOWEN MONICA N822
 PEAKES BOWEN MONICA L501

MID MAY 2024 TRANSTASMAN ANGUS CATTLE EVALUATION

CED	CEM	GL	BW	200d	400d	600d	Mcw	Milk	SS	CWT	EMA	Rib	Rump	RBY	IMF	SELECTION INDEXES			
-2.3	+1.8	-6.0	+6.5	+63.0	+101.0	+137.0	+120.0	+19.0	+3.9	+70.0	+6.1	+2.0	+3.0	-0.9	+3.7	ABI	Dom.	Grain	Grass
67%	58%	83%	82%	83%	81%	82%	79%	75%	80%	71%	71%	70%	72%	63%	75%	\$238	\$186	\$322	\$228



Purchaser: \$

LOT 86 **PEAKES BOWEN QUARTERBACK T596 PV** **HBR**
 Born: 17/07/2022 AMF,CAF,DDF,NHF,DWF,MAF,MHF,OH F,OSF,RGF Tattoo-Brand: T596 **EVT22T596**

STRUCTURAL ASSESSMENT									
CLAW SET FRONT	CLAW SET REAR	FRONT FEET ANGLE	REAR FEET ANGLE	REAR LEGS SIDE VIEW	REAR LEGS HINDVIEW	SCROTAL (cm)	TEMP.	SHEATH	
6	5	5	6	5	6	34	2	5	

Notes:

Quarterback T596 is a cracking free moving Quarterback Q011 son with soft slick skin, he is as long as a train. He has short gestation, a moderate birth weight & rates highly for his IMF & EMA data evaluations. Dam Mona F90 was a very sound female with terrific longevity. We have retained many of her daughters & have sold many of her sons at previous Bowen bull sales.

LAWSONS MOMENTOUS M518
SIRE: MURDEDUKE QUARTERBACK Q011
 MURDEDUKE BARUNAH N026
 BULLIAC DE CASTELLA D1
DAM: PEAKES MONA F90
 BOWEN MONA B77

MID MAY 2024 TRANSTASMAN ANGUS CATTLE EVALUATION

CED	CEM	GL	BW	200d	400d	600d	Mcw	Milk	SS	CWT	EMA	Rib	Rump	RBY	IMF	SELECTION INDEXES			
-2.2	-3.7	-7.9	+4.4	+46.0	+78.0	+107.0	+95.0	+16.0	+1.4	+51.0	+10.1	+0.5	0.0	+0.3	+4.2	ABI	Dom.	Grain	Grass
69%	59%	83%	82%	83%	82%	82%	79%	76%	80%	72%	72%	71%	72%	63%	76%	\$187	\$137	\$260	\$171



Purchaser: \$

LOT 87 **PEAKES BOWEN QARARA T580 SV** **HBR**
 Born: 06/07/2022 AMF,CAF,DDF,NHF,DWF,MAF,MHF,OH F,OSF,RGF Tattoo-Brand: T580 **EVT22T580**

STRUCTURAL ASSESSMENT									
CLAW SET FRONT	CLAW SET REAR	FRONT FEET ANGLE	REAR FEET ANGLE	REAR LEGS SIDE VIEW	REAR LEGS HINDVIEW	SCROTAL (cm)	TEMP.	SHEATH	
6	5	5	6	6	6	42	1	4	

Notes:

Qarara T580 has been a standout since birth & he is from one of our best Abigail cow families. Grand dam Abigail F39 has great longevity which is pleasing to see in a breeder. This Qarara Q514 son has excellent fertility, RBY & EMA data credentials. He had the second heaviest weight in his mob at weaning & had the second highest EMA & IMF in his mob at scanning. Note he has a small white spot in front of his testicles.

TE MANIA KIRBY K138
SIRE: TE MANIA QARARA Q514
 TE MANIA BARUNAH L537
 MILWILLAH LAD E158
DAM: PEAKES BOWEN ABIGAIL L573
 PEAKES ABIGAIL F39

MID MAY 2024 TRANSTASMAN ANGUS CATTLE EVALUATION

CED	CEM	GL	BW	200d	400d	600d	Mcw	Milk	SS	CWT	EMA	Rib	Rump	RBY	IMF	SELECTION INDEXES			
-2.3	-2.0	-6.7	+7.2	+57.0	+96.0	+115.0	+86.0	+18.0	+3.0	+75.0	+10.2	-1.9	-1.8	+1.5	+2.6	ABI	Dom.	Grain	Grass
65%	54%	83%	82%	83%	81%	81%	78%	73%	79%	71%	70%	70%	71%	62%	75%	\$274	\$243	\$345	\$259



Purchaser: \$

LOT
88

PEAKES BOWEN PARATROOPER T568^{SV}

HBR

Born: 07/07/2022

AMF,CAF,DDF,NHF,DWF,MAF,MHF,OH
F,OSF,RGF

Tattoo-Brand: T568

EVT22T568



EF COMMANDO 1366
SIRE: MILLAH MURRAH PARATROOPER P15
 MILLAH MURRAH ELA M9
 HIGHLANDER OF STERN NZ
DAM: PEAKES VICKY G18
 PEAKES VICKY B68

Notes: Paratrooper T568 ticks a lot of boxes with his sheer capacity. He is a very attractive & stylish sire. Dam Vicky G18 is a beautiful Highlander of Stern daughter, her four sons have sold to average \$12k. He offers a top shelf outcross pedigree with the first of our Paratrooper sons selling this year. Data shows excellent growth weight, carcass & RBV. At 600 day weighing he had the second heaviest weight in his mob.

STRUCTURAL ASSESSMENT				
CLAW SET FRONT	CLAW SET REAR	FRONT FEET ANGLE	REAR FEET ANGLE	
6	5	5	5	
REAR LEGS SIDE VIEW	REAR LEGS HIND VIEW	SCROTAL (cm)	TEMP.	SHEATH
5	6	42	1	4

MID MAY 2024 TRANSTASMAN ANGUS CATTLE EVALUATION

CED	CEM	GL	BW	200d	400d	600d	Mcw	Milk	SS	CWT	EMA	Rib	Rump	RBV	IMF	SELECTION INDEXES			
+1.1	+7.1	-6.4	+7.0	+62.0	+105.0	+140.0	+125.0	+18.0	+2.5	+90.0	+3.7	-3.0	-3.5	+1.1	-1.1	ABI	Dom.	Grain	Grass
72%	63%	84%	83%	84%	82%	83%	80%	77%	81%	73%	72%	72%	73%	65%	76%	\$191	\$170	\$236	\$178



Purchaser: \$

LOT
89

PEAKES BOWEN PRIME MINISTER T635^{SV}

HBR

Born: 15/07/2022

AMF,CAF,DDF,NHF,DWF,MAF,MHF,OH
F,OSF,RGF

Tattoo-Brand: T635

EVT22T635

STRUCTURAL ASSESSMENT								
CLAW SET FRONT	CLAW SET REAR	FRONT FEET ANGLE	REAR FEET ANGLE	REAR LEGS SIDE VIEW	REAR LEGS HIND VIEW	SCROTAL (cm)	TEMP.	SHEATH
6	5	5	6	5	5	42	1	5

RENNYLEA NORL508
SIRE: DUNOON PRIME MINISTER P758
 DUNOON JAPARA M1008

KAROO B1 BERKLEY J179
DAM: PEAKES BOWEN GRIDMAKER M755
 PEAKES GRIDMAKER K721

Notes:

One of the standout sons in this years sale sired by the top selling Dunoon Prime Minister P758, who sold for \$140,000 in 2020. Prime Minister T635 has a tremendous body mass & depth to his barrel. He rates very highly for his calving ease, IMF & structural data evaluations. He was the heaviest in his mob at scanning & had the highest EMA measurement.

MID MAY 2024 TRANSTASMAN ANGUS CATTLE EVALUATION

CED	CEM	GL	BW	200d	400d	600d	Mcw	Milk	SS	CWT	EMA	Rib	Rump	RBV	IMF	SELECTION INDEXES			
+6.2	+5.9	-12.3	+3.2	+47.0	+88.0	+125.0	+130.0	+16.0	+3.1	+49.0	+2.2	-0.1	-1.4	-0.1	+4.5	ABI	Dom.	Grain	Grass
66%	56%	84%	83%	84%	82%	83%	79%	75%	80%	72%	71%	71%	72%	63%	76%	\$191	\$148	\$248	\$181



Purchaser: \$

LOT
90

PEAKES BOWEN PROCEED T643^{PV}

HBR

Born: 27/07/2022

AMF,CAF,DDF,NHF,DWF,MAF,MHF,OH
F,OSF,RGF

Tattoo-Brand: T643

EVT22T643



H P C A PROCEED
SIRE: MILWILLAH PROCEED P745
 MILWILLAH LOWAN H48
 KAROO BLACK PEARL L125
DAM: PEAKES BOWEN GRIDMAKER P612
 PEAKES GRIDMAKER K708

Notes: Proceed T643 is the third calf from Gridmaker P612, his maternal sister has been retained & maternal brother sold in the 2023 Bowen bull sale \$18k. He is a powerful sire with terrific growth & weight for age. Rating very highly for his structural evaluations. In his mob he had the third highest weight & EMA measurement at scanning.

STRUCTURAL ASSESSMENT				
CLAW SET FRONT	CLAW SET REAR	FRONT FEET ANGLE	REAR FEET ANGLE	
6	5	5	6	
REAR LEGS SIDE VIEW	REAR LEGS HIND VIEW	SCROTAL (cm)	TEMP.	SHEATH
4	6	39	1	5

MID MAY 2024 TRANSTASMAN ANGUS CATTLE EVALUATION

CED	CEM	GL	BW	200d	400d	600d	Mcw	Milk	SS	CWT	EMA	Rib	Rump	RBV	IMF	SELECTION INDEXES			
-5.4	+3.3	-5.8	+6.3	+51.0	+86.0	+119.0	+96.0	+16.0	+0.5	+70.0	+6.5	-0.7	-0.7	+0.6	+2.1	ABI	Dom.	Grain	Grass
64%	55%	81%	81%	82%	80%	81%	77%	73%	79%	69%	69%	68%	70%	60%	73%	\$183	\$141	\$243	\$165



Purchaser: \$

LOT 91 **PEAKES BOWEN QARARA T658 SV** **HBR**
 Born: 06/07/2022 AMF,CAF,DDF,NHF,DWF,MAF,MHF,OH F,OSF,RGF Tattoo-Brand: T658 **EVT22T658**

STRUCTURAL ASSESSMENT									
CLAW SET FRONT	CLAW SET REAR	FRONT FEET ANGLE	REAR FEET ANGLE	REAR LEGS SIDE VIEW	REAR LEGS HINDVIEW	SCROTAL (cm)	TEMP.	SHEATH	
7	6	6	6	6	6	43	1	5	

TE MANIA KIRBY K138
SIRE: TE MANIA QARARA Q514
 TE MANIA BARUNAH L537
 MILWILLAH LAD E158
DAM: PEAKES ABIGAIL K608
 PEAKES ABIGAIL C28

Notes:

Qarara T658 had the equal second heaviest weight, highest IMF & the fourth highest EMA in his mob at scanning. He has lovely soft slick skin & plenty of length to his body. Maternal brother sold in 2023 Bowen bull sale \$20K. This year is the first of sons Qarara Q514 sons for sale, he is a very sound & correct sire. We have continued to use him over successfully over our yearling heifers. Note he has a white patch in front of his testicles.

MID MAY 2024 TRANSTASMAN ANGUS CATTLE EVALUATION

CED	CEM	GL	BW	200d	400d	600d	Mcw	Milk	SS	CWT	EMA	Rib	Rump	RBY	IMF	SELECTION INDEXES			
+3.1	+4.3	-9.5	+4.9	+49.0	+93.0	+124.0	+105.0	+19.0	+3.2	+68.0	+5.2	+0.6	-2.3	+0.2	+1.9	ABI	Dom.	Grain	Grass
64%	54%	82%	81%	82%	80%	81%	77%	72%	79%	69%	69%	69%	70%	61%	73%	\$194	\$164	\$242	\$182



Purchaser: \$

LOT 92 **PEAKES BOWEN QARARA T710 SV** **HBR**
 Born: 19/07/2022 AMF,CAF,DDF,NHF,DWF,MAF,MHF,OH F,OSF,RGF Tattoo-Brand: T710 **EVT22T710**

STRUCTURAL ASSESSMENT									
CLAW SET FRONT	CLAW SET REAR	FRONT FEET ANGLE	REAR FEET ANGLE	REAR LEGS SIDE VIEW	REAR LEGS HINDVIEW	SCROTAL (cm)	TEMP.	SHEATH	
6	5	5	5	4	6	42	1	5	

TE MANIA KIRBY K138
SIRE: TE MANIA QARARA Q514
 TE MANIA BARUNAH L537
 MURDEDUKE KURRAJONG K18
DAM: PEAKES BOWEN NUMERAL N575
 PEAKES NUMERAL G93

Notes:

Qarara T710 is a very deep soft safe bull that will breed terrific females. His three maternal brothers have sold to average \$22k. Data set rates highly for growth & carass weight with top end structural evaluation data. Note he has a white patch in front of his testicles.

MID MAY 2024 TRANSTASMAN ANGUS CATTLE EVALUATION

CED	CEM	GL	BW	200d	400d	600d	Mcw	Milk	SS	CWT	EMA	Rib	Rump	RBY	IMF	SELECTION INDEXES			
-2.7	-4.9	-4.4	+6.8	+65.0	+112.0	+145.0	+129.0	+14.0	+2.4	+94.0	-1.1	-1.0	0.0	-0.5	+2.3	ABI	Dom.	Grain	Grass
65%	54%	83%	82%	83%	81%	81%	77%	73%	79%	70%	70%	69%	70%	61%	74%	\$192	\$158	\$260	\$173



Purchaser: \$

LOT 93 **PEAKES BOWEN QARARA T708 SV** **HBR**
 Born: 17/07/2022 AMF,CAF,DDF,NHF,DWF,MAF,MHF,OH F,OSF,RGF Tattoo-Brand: T708 **EVT22T708**



TE MANIA KIRBY K138
SIRE: TE MANIA QARARA Q514
 TE MANIA BARUNAH L537
 DUNOON GABBA G548
DAM: PEAKES LULU K724
 BOWEN LULU W27

Notes: A safe sound easy doing type of bull, he is very thick with a deep barrel. Qarara T708 has low birth weight & high IMF data credentials. His pedigree contains the powerful maternal lines of Beeac, Barunah & our top breeding donor Lulu W27. We have continued to use his sire Qarara Q514 successfully over our yearling heifers, he has terrific calving ease credentials. Maternal brothers have sold to \$10k. Note he has a white patch under his flank.

STRUCTURAL ASSESSMENT									
CLAW SET FRONT	CLAW SET REAR	FRONT FEET ANGLE	REAR FEET ANGLE	REAR LEGS SIDE VIEW	REAR LEGS HINDVIEW	SCROTAL (cm)	TEMP.	SHEATH	
6	5	5	6	5	6	43	1	4	

MID MAY 2024 TRANSTASMAN ANGUS CATTLE EVALUATION

CED	CEM	GL	BW	200d	400d	600d	Mcw	Milk	SS	CWT	EMA	Rib	Rump	RBY	IMF	SELECTION INDEXES			
+2.1	+5.6	-3.7	+2.5	+42.0	+68.0	+91.0	+65.0	+13.0	+2.8	+59.0	+5.0	-1.8	-0.1	+0.7	+3.2	ABI	Dom.	Grain	Grass
65%	55%	82%	82%	83%	81%	81%	77%	73%	79%	70%	70%	69%	70%	62%	74%	\$204	\$165	\$263	\$189



Purchaser: \$

LOT
94

PEAKES BOWEN QOUNTDOWN T842^{SV}

HBR

Born: 18/07/2022

AMF,CAF,DDF,NHF,DWF,MAF,MHF,OH
F,OSF,RGF

Tattoo-Brand: T842

EVT22T842



TE MANIA KIRBY K138
SIRE: TE MANIA QOUNTDOWN Q1290
TE MANIA BARUNAH J513
KIDMAN PRECEDENCE K72
DAM: PEAKES BOWEN JESTRESS Q719
PEAKES JESTRESS J716

Notes: Qountdown T842 has an eye-catching head & eye with a tonne of growth. He will stack the weight into his weaner progeny. His data shows low birth with shorter gestation. He is rated in the top 3% or better with in the breed for his IMF & Docility evaluations.

STRUCTURAL ASSESSMENT					
CLAW SET FRONT	CLAW SET REAR	FRONT FEET ANGLE	REAR FEET ANGLE		
6	5	5	6		
REAR LEGS SIDE VIEW	REAR LEGS HINDVIEW	SCROTAL (cm)	TEMP.	SHEATH	
4	5	40	1	4	

MID MAY 2024 TRANSTASMAN ANGUS CATTLE EVALUATION

CED	CEM	GL	BW	200d	400d	600d	Mcw	Milk	SS	CWT	EMA	Rib	Rump	RBY	IMF	SELECTION INDEXES			
+6.1	+9.4	-5.8	+3.5	+43.0	+76.0	+105.0	+123.0	+16.0	+2.0	+46.0	+2.4	+1.3	+0.9	-0.9	+5.5	ABI	Dom.	Grain	Grass
63%	54%	81%	80%	82%	80%	80%	77%	73%	78%	69%	68%	68%	69%	59%	73%	\$179	\$135	\$245	\$165



Purchaser: \$

LOT
95

PEAKES BOWEN REGENT T818^{SV}

HBR

Born: 10/08/2022

AMF,CAF,DDF,NHF,DWF,MAF,MHF,OH
F,OSF,RGF

Tattoo-Brand: T818

EVT22T818

STRUCTURAL ASSESSMENT									
CLAW SET FRONT	CLAW SET REAR	FRONT FEET ANGLE	REAR FEET ANGLE	REAR LEGS SIDE VIEW	REAR LEGS HINDVIEW	SCROTAL (cm)	TEMP.	SHEATH	
6	5	5	6	5	6	39	1	4	

Notes:

A Regent M517 son with loads of capacity & supple soft skin just like his sire. His maternal brothers have sold to \$20k. Grand dam donor Jestress V37 was an exceptional female, very deep bodied & thick with a strong muzzle. She was a breeder that we rate very highly.

TUWHARETOA REGENT D145
SIRE: PEAKES BOWEN REGENT M517
PEAKES ABIGAIL G68

BRAVEHEART OF STERN NZ
DAM: PEAKES JESTRESS J664
MERRIGRANGE JESTRESS V37

MID MAY 2024 TRANSTASMAN ANGUS CATTLE EVALUATION

CED	CEM	GL	BW	200d	400d	600d	Mcw	Milk	SS	CWT	EMA	Rib	Rump	RBY	IMF	SELECTION INDEXES			
+0.8	-2.0	-3.2	+4.9	+42.0	+76.0	+117.0	+104.0	+20.0	-0.8	+85.0	+2.1	-3.7	-3.5	+0.9	+2.1	ABI	Dom.	Grain	Grass
66%	58%	81%	81%	83%	81%	81%	78%	74%	79%	70%	70%	69%	70%	62%	74%	\$147	\$106	\$190	\$135



Purchaser: \$

LOT
96

PEAKES BOWEN REGAL FOCUS T701^{SV}

HBR

Born: 12/08/2022

AMF,CAF,DDF,NHF,DWF,MAF,MHF,OH
F,OSF,RGF

Tattoo-Brand: T701

EVT22T701



TUWHARETOA REGENT D145
SIRE: PEAKES BOWEN REGAL FOCUS P746
PEAKES LOWAN K685
BULLIAC FUSION F33
DAM: PEAKES VICKY K645
PEAKES VICKY D5

Notes: Regal Focus P746 son from a consistent breeding cow family. Three maternal brothers have sold to average \$16k. Regal Focus T701 is long bodied & is smooth fronted for ease of calving. He has low birth weight data & weighed 35kg at birth. Rates highly for his EMA & IMF data evaluations. Note he has a white patch in front of his testicles.

STRUCTURAL ASSESSMENT					
CLAW SET FRONT	CLAW SET REAR	FRONT FEET ANGLE	REAR FEET ANGLE		
6	5	5	6		
REAR LEGS SIDE VIEW	REAR LEGS HINDVIEW	SCROTAL (cm)	TEMP.	SHEATH	
5	6	39	1	5	

MID MAY 2024 TRANSTASMAN ANGUS CATTLE EVALUATION

CED	CEM	GL	BW	200d	400d	600d	Mcw	Milk	SS	CWT	EMA	Rib	Rump	RBY	IMF	SELECTION INDEXES			
-0.6	-0.6	-0.6	+3.3	+43.0	+70.0	+95.0	+71.0	+25.0	+1.4	+46.0	+7.9	-0.7	-1.2	+0.2	+3.9	ABI	Dom.	Grain	Grass
63%	54%	81%	80%	82%	80%	81%	77%	73%	78%	69%	68%	68%	69%	60%	73%	\$191	\$144	\$260	\$173



Purchaser: \$

LOT 97

PEAKES BOWEN IDENTITY T616 PV

HBR

Born: 26/07/2022

AMF,CAF,DDF,NHF,DWF,MAF,MHF,OH
F,OSF,RGF

Tattoo-Brand: T616

EVT22T616



KOUPALS B&B IDENTITY
SIRE: MILWILLAH IDENTITY P134
MILWILLAH BARUNAH K26
RENNYLEA EDMUND E11
DAM: PEAKES BOWEN LULU P785
PEAKES LULU H543

Notes: One of our best Identity P134 sons, he is tank on wheels with lots of potential. He has the rare hard to get data combination of high EMA, IMF & fats evaluations. Identity T616 is the third calf from Lulu P785, his maternal sister has been retained in our stud & maternal brother sold for \$16K.

STRUCTURAL ASSESSMENT					
CLAW SET FRONT	CLAW SET REAR	FRONT FEET ANGLE	REAR FEET ANGLE		
6	5	5	6		
REAR LEGS SIDE VIEW	REAR LEGS HINDVIEW	SCROTAL (cm)	TEMP.	SHEATH	
5	5	44	1	4	

MID MAY 2024 TRANSTASMAN ANGUS CATTLE EVALUATION

CED	CEM	GL	BW	200d	400d	600d	Mcw	Milk	SS	CWT	EMA	Rib	Rump	RBY	IMF	SELECTION INDEXES			
-3.7	+0.9	-5.7	+5.5	+50.0	+86.0	+117.0	+127.0	+2.0	+2.5	+63.0	+11.3	+3.1	+4.5	+0.1	+3.9	ABI	Dom.	Grain	Grass
66%	57%	82%	81%	83%	80%	81%	78%	74%	79%	70%	70%	69%	70%	62%	74%	\$200	\$153	\$271	\$189



Purchaser: \$

LOT 98

PEAKES BOWEN IDENTITY T553 SV

HBR

Born: 08/07/2022

AMF,CAF,DDF,NHF,DWF,MAF,MHF,OH
F,OSF,RGF

Tattoo-Brand: T553

EVT22T553

STRUCTURAL ASSESSMENT									
CLAW SET FRONT	CLAW SET REAR	FRONT FEET ANGLE	REAR FEET ANGLE	REAR LEGS SIDE VIEW	REAR LEGS HINDVIEW	SCROTAL (cm)	TEMP.	SHEATH	
6	5	5	6	5	6	40	1	4	

KOUPALS B&B IDENTITY
SIRE: PEAKES BOWEN IDENTITY P694
PREMIER Y301 DREAM G13

PEAKES REALITY K697
DAM: PEAKES BOWEN LULU P723
PEAKES BOWEN LULU M771

Notes:

Identity T553 is a soft safe easy doing type of sire that will breed excellent vealers. He has a pedigree stacked with calving ease genetics. His data ratings are excellent for very low birth & short gestation with high fats & EMA evaluations. He is the second calf from Lulu P723, his maternal sister has been retained in our stud. Pedigree offers the top cow families of Dream, Dianna & Lulu. Note he has a small spot of white near his testicles.

MID MAY 2024 TRANSTASMAN ANGUS CATTLE EVALUATION

CED	CEM	GL	BW	200d	400d	600d	Mcw	Milk	SS	CWT	EMA	Rib	Rump	RBY	IMF	SELECTION INDEXES			
+5.9	+4.7	-8.7	+1.9	+39.0	+79.0	+106.0	+78.0	+20.0	+2.3	+64.0	+9.1	+2.7	+4.4	+0.2	+0.5	ABI	Dom.	Grain	Grass
64%	54%	82%	81%	82%	80%	80%	77%	73%	78%	68%	68%	68%	69%	59%	73%	\$194	\$160	\$244	\$181



Purchaser: \$

LOT 99

PEAKES BOWEN REGAL FOCUS T815 SV

HBR

Born: 20/08/2022

AMF,CAF,DDF,NHF,DWF,MAF,MHF,OH
F,OSF,RGF

Tattoo-Brand: T815

EVT22T815



TUWHARETOA REGENT D145
SIRE: PEAKES BOWEN REGAL FOCUS P746
PEAKES LOWAN K685
MILWILLAH LAD E158
DAM: PEAKES ABIGAIL H640
PEAKES ABIGAIL E75

Notes: Regal Focus T815 is the complete package with his highly rated evaluations for low birth weight and high IMF, EMA, fats, docility & structural data. Maternal brother sold in 2021 Bowen bull sale to Mountain Valley Angus stud \$36K. His three maternal sisters have been retained in our stud.

STRUCTURAL ASSESSMENT					
CLAW SET FRONT	CLAW SET REAR	FRONT FEET ANGLE	REAR FEET ANGLE		
6	5	5	5		
REAR LEGS SIDE VIEW	REAR LEGS HINDVIEW	SCROTAL (cm)	TEMP.	SHEATH	
5	6	42	1	5	

MID MAY 2024 TRANSTASMAN ANGUS CATTLE EVALUATION

CED	CEM	GL	BW	200d	400d	600d	Mcw	Milk	SS	CWT	EMA	Rib	Rump	RBY	IMF	SELECTION INDEXES			
+4.0	-4.3	-2.1	+2.5	+40.0	+73.0	+88.0	+44.0	+26.0	+1.2	+51.0	+13.8	+3.7	+3.5	-0.1	+5.5	ABI	Dom.	Grain	Grass
64%	56%	81%	81%	82%	80%	81%	77%	73%	78%	70%	69%	69%	70%	61%	74%	\$225	\$169	\$332	\$210



Purchaser: \$

LOT 100 **PEAKES BOWEN BLACK PEARL T593^{SV}** **HBR**
 Born: 26/07/2022 AMF,CAF,DDF,NHF,DWF,MAF,MHF,OH F,OSF,RGF Tattoo-Brand: T593 **EVT22T593**

STRUCTURAL ASSESSMENT								
CLAW SET FRONT	CLAW SET REAR	FRONT FEET ANGLE	REAR FEET ANGLE	REAR LEGS SIDE VIEW	REAR LEGS HINDVIEW	SCROTAL (cm)	TEMP.	SHEATH
6	5	5	6	5	6	42	1	5

SYDGEN BLACK PEARL 2006
SIRE: KAROO BLACK PEARL L125
 KAROO MONTANA J263
 S A V PIONEER 7301
DAM: PEAKES BOWEN ABIGAIL L579
 PEAKES ABIGAIL G76

Notes:

Black Pearl T593 has two sisters retained in our stud, maternal brother sold for \$28k. At scanning he had the highest EMA & equal third highest IMF in his mob. His data evaluations seem to contradict the bulls actual scanning measurements. This year will be last of the Black Pearl L125 sons to be offered. He has bred very well leaving some beautiful females, his sons have sold to \$34K & his females to \$12k at Bowen sales. Note he has a small spot of white beside his testicles.

MID MAY 2024 TRANSTASMAN ANGUS CATTLE EVALUATION

CED	CEM	GL	BW	200d	400d	600d	Mcw	Milk	SS	CWT	EMA	Rib	Rump	RBV	IMF	SELECTION INDEXES			
-0.2	+1.4	-4.2	+5.1	+42.0	+71.0	+90.0	+56.0	+15.0	+2.4	+50.0	+5.7	+3.3	+5.2	0.0	-0.5	ABI	Dom.	Grain	Grass
66%	58%	83%	82%	83%	81%	82%	78%	76%	80%	72%	71%	71%	72%	63%	75%	\$156	\$130	\$206	\$138



Purchaser: \$

LOT 101 **PEAKES BOWEN IDENTITY T807^{PV}** **HBR**
 Born: 18/08/2022 AMF,CAF,DDF,NHF,DWF,MAF,MHF,OH F,OSF,RGF Tattoo-Brand: T807 **EVT22T807**



KOUPALS B&B IDENTITY
SIRE: MILWILLAH IDENTITY P134
 MILWILLAH BARUNAH K26
 KAROO BLACK PEARL L125
DAM: PEAKES BOWEN LULU P588
 PEAKES LULU K520

Notes: This Identity P134 son really fills his pants, he will produce high yielding weighty progeny. Identity T807 excels in fats, IMF & structural data traits. Sire Identity P134 is a soft easy doing sire, his sons have sold to \$32K & daughters have sold to \$22K.

STRUCTURAL ASSESSMENT								
CLAW SET FRONT	CLAW SET REAR	FRONT FEET ANGLE	REAR FEET ANGLE	REAR LEGS SIDE VIEW	REAR LEGS HINDVIEW	SCROTAL (cm)	TEMP.	SHEATH
6	5	5	6	5	6	40	1	5

MID MAY 2024 TRANSTASMAN ANGUS CATTLE EVALUATION

CED	CEM	GL	BW	200d	400d	600d	Mcw	Milk	SS	CWT	EMA	Rib	Rump	RBV	IMF	SELECTION INDEXES			
-0.6	+2.9	-3.6	+5.6	+52.0	+88.0	+124.0	+127.0	+12.0	+1.5	+67.0	+4.8	+2.6	+2.9	0.0	+2.8	ABI	Dom.	Grain	Grass
63%	54%	81%	80%	82%	80%	81%	77%	73%	78%	69%	68%	68%	69%	59%	73%	\$204	\$160	\$265	\$191



Purchaser: \$

LOT 102 **PEAKES BOWEN IDENTITY T632^{PV}** **HBR**
 Born: 26/07/2022 AMF,CAF,DDF,NHF,DWF,MAF,MHF,OH F,OSF,RGF Tattoo-Brand: T632 **EVT22T632**

STRUCTURAL ASSESSMENT								
CLAW SET FRONT	CLAW SET REAR	FRONT FEET ANGLE	REAR FEET ANGLE	REAR LEGS SIDE VIEW	REAR LEGS HINDVIEW	SCROTAL (cm)	TEMP.	SHEATH
6	5	5	6	6	6	39	1	4

KOUPALS B&B IDENTITY
SIRE: MILWILLAH IDENTITY P134
 MILWILLAH BARUNAH K26
 TE MANIA GARTH G67
DAM: PEAKES BOWEN NUMERAL P758
 PEAKES NUMERAL K539

Notes:

Identity T632 has a top shelf pedigree combination & rates highly for his IMF. He is very stylish with soft slick skin & is very thick. We retained his maternal brother Peakes Bowen Prophet R728 to use in our stud. Note he has a touch of white near his testicles.

MID MAY 2024 TRANSTASMAN ANGUS CATTLE EVALUATION

CED	CEM	GL	BW	200d	400d	600d	Mcw	Milk	SS	CWT	EMA	Rib	Rump	RBV	IMF	SELECTION INDEXES			
+0.6	+7.4	-5.4	+5.3	+50.0	+87.0	+114.0	+101.0	+18.0	+1.3	+60.0	+2.5	+0.4	+1.1	-0.3	+3.7	ABI	Dom.	Grain	Grass
65%	56%	82%	81%	83%	81%	81%	78%	74%	79%	70%	69%	69%	70%	61%	74%	\$198	\$156	\$269	\$179



Purchaser: \$

LOT 103 **PEAKES BOWEN REMBRANT T613 SV** **HBR**
 Born: 18/07/2022 AMF,CAF,DDF,NHF,DWF,MAF,MHF,OH F,OSF,RGF Tattoo-Brand: T613 **EVT22T613**

STRUCTURAL ASSESSMENT									
CLAW SET FRONT	CLAW SET REAR	FRONT FEET ANGLE	REAR FEET ANGLE	REAR LEGS SIDE VIEW	REAR LEGS HINDVIEW	SCROTAL (cm)	TEMP.	SHEATH	
6	5	5	6	5	6	40	1	4	

Notes:

Rembrant T613 is well made with sound structure & carcass attributes. His data Rates highly for fats, RBY & IMF with short gestation and a moderate birth weight weighing 36 kg at birth. His maternal brother sold for \$26k. Sire Millah Murrah Rembrant R48 sold in 2021 for \$240,000. This year we have the first of our Rembrant R48 sons for sale.

MILLAH MURRAH PARATROOPER P15
SIRE: MILLAH MURRAH REMBRANT R48
 MILLAH MURRAH ABIGAIL N60
 MILWILLAH LAD E158
DAM: PEAKES BOWEN VICKY L587
 PEAKES VICKY D5

MID MAY 2024 TRANSTASMAN ANGUS CATTLE EVALUATION

CED	CEM	GL	BW	200d	400d	600d	Mcw	Milk	SS	CWT	EMA	Rib	Rump	RBY	IMF	SELECTION INDEXES			
+6.5	+4.0	-9.1	+4.2	+44.0	+82.0	+98.0	+71.0	+12.0	+2.9	+52.0	+7.3	+2.3	+2.7	+0.8	+3.5	ABI	Dom.	Grain	Grass
65%	54%	83%	82%	83%	81%	81%	77%	73%	79%	70%	70%	69%	70%	61%	74%	\$255	\$221	\$326	\$242



Purchaser: \$

LOT 104 **PEAKES BOWEN QARARA T625 SV** **HBR**
 Born: 17/07/2022 AMF,CAF,DDF,NHF,DWF,MAF,MHF,OH F,OSF,RGF Tattoo-Brand: T625 **EVT22T625**



TE MANIA KIRBY K138
SIRE: TE MANIA QARARA Q514
 TE MANIA BARUNAH L537
 VERMILION NEW DESIGN L805
DAM: VERMONT LOWAN E334
 VERMONT LOWAN B136

Notes: Qarara T625 has fantastic depth to his barrel and high data ratings for his IMF, fertility & docility evaluations. He offers an outcross pedigree with new sire Qarara Q514. Dam Vermont Lowan E334 we purchased at the Vermont dispersal. Her sons have averaged \$14k & daughters have sold to \$7K, we only sold her last year she certainly had longevity which is pleasing to see in a matron. Note he has a touch of white near his testicles.

STRUCTURAL ASSESSMENT									
CLAW SET FRONT	CLAW SET REAR	FRONT FEET ANGLE	REAR FEET ANGLE	REAR LEGS SIDE VIEW	REAR LEGS HINDVIEW	SCROTAL (cm)	TEMP.	SHEATH	
6	5	5	6	6	5	42	1	5	

MID MAY 2024 TRANSTASMAN ANGUS CATTLE EVALUATION

CED	CEM	GL	BW	200d	400d	600d	Mcw	Milk	SS	CWT	EMA	Rib	Rump	RBY	IMF	SELECTION INDEXES			
-7.1	+1.8	-1.0	+4.9	+55.0	+92.0	+115.0	+95.0	+13.0	+3.2	+69.0	+7.1	-0.2	+1.1	+0.2	+3.2	ABI	Dom.	Grain	Grass
65%	54%	83%	82%	83%	81%	82%	78%	74%	80%	70%	70%	69%	71%	62%	74%	\$220	\$184	\$292	\$205



Purchaser: \$

LOT 105 **PEAKES BOWEN REGAL FOCUS T808 SV** **HBR**
 Born: 11/08/2022 AMF,CAF,DDF,NHF,DWF,MAF,MHF,OH F,OSF,RGF Tattoo-Brand: T808 **EVT22T808**



TUWHARETOA REGENT D145
SIRE: PEAKES BOWEN REGAL FOCUS P746
 PEAKES LOWAN K685
 MILWILLAH ULTRAVOX B100
DAM: PEAKES NUMERAL G126
 BOWEN NUMERAL X19

Notes: This Regal Focus P746 son has super slick skin, he is a very safe young sire with highly rated data for his fertility, RBY & structural evaluations. Regal Focus T808 is from the top performing dam Numeral G126 her four sons have sold to average \$11,250. Her three daughters have been retained in our stud. Note he has a touch of white in front of his testicles.

STRUCTURAL ASSESSMENT									
CLAW SET FRONT	CLAW SET REAR	FRONT FEET ANGLE	REAR FEET ANGLE	REAR LEGS SIDE VIEW	REAR LEGS HINDVIEW	SCROTAL (cm)	TEMP.	SHEATH	
6	5	5	6	5	5	43	1	4	

MID MAY 2024 TRANSTASMAN ANGUS CATTLE EVALUATION

CED	CEM	GL	BW	200d	400d	600d	Mcw	Milk	SS	CWT	EMA	Rib	Rump	RBY	IMF	SELECTION INDEXES			
-0.6	-3.3	-4.2	+4.3	+38.0	+70.0	+95.0	+64.0	+24.0	+4.0	+57.0	+6.2	-0.4	-0.7	+1.1	+0.6	ABI	Dom.	Grain	Grass
64%	55%	82%	81%	83%	80%	81%	78%	74%	79%	70%	69%	69%	70%	60%	74%	\$168	\$143	\$204	\$159



Purchaser: \$

LOT 106 **PEAKES BOWEN REGAL FOCUS T785 SV** **HBR**
 Born: 16/08/2022 AMF,CAF,DDC,NHF,DWF,MAF,MHF,OH F,OSF,RGF Tattoo-Brand: T785 **EVT22T785**

STRUCTURAL ASSESSMENT									
CLAW SET FRONT	CLAW SET REAR	FRONT FEET ANGLE	REAR FEET ANGLE	REAR LEGS SIDE VIEW	REAR LEGS HINDVIEW	SCROTAL (cm)	TEMP.	SHEATH	
6	5	6	6	6	6	40	1	4	

Notes:

Regal Focus T785 has a fantastic muscle pattern & excellent thickness down his lower thigh. A very sound safe sire that will breed top weaner steers & heifers. His data rates well for moderate birth weight with a high IMF evaluation.

TUWHARETOA REGENT D145
SIRE: PEAKES BOWEN REGAL FOCUS P746
 PEAKES LOWAN K685

KANSAS EVIDENTLY J81
DAM: PEAKES BOWEN NUMERAL M616
 PEAKES NUMERAL D68

MID MAY 2024 TRANSTASMAN ANGUS CATTLE EVALUATION

CED	CEM	GL	BW	200d	400d	600d	Mcw	Milk	SS	CWT	EMA	Rib	Rump	RBY	IMF	SELECTION INDEXES			
+1.8	+0.7	-2.9	+4.2	+47.0	+68.0	+92.0	+64.0	+22.0	+2.5	+55.0	+7.0	-0.9	-2.0	+1.0	+2.9	ABI	Dom.	Grain	Grass
63%	55%	81%	80%	82%	80%	81%	77%	73%	78%	69%	68%	68%	69%	60%	73%	\$199	\$155	\$266	\$180



Purchaser: \$

LOT 107 **PEAKES BOWEN PROCEED T657 PV** **HBR**
 Born: 12/08/2022 AMF,CAF,DDF,NHF,DWF,MAF,MHF,OH F,OSF,RGF Tattoo-Brand: T657 **EVT22T657**



H P C A PROCEED
SIRE: MILWILLAH PROCEED P745
 MILWILLAH LOWAN H48
 MUSGRAVE 316 STUNNER
DAM: PEAKES BOWEN ABIGAIL P719
 PEAKES BOWEN ABIGAIL M664

Notes: Proceed T657 will breed top vealers he is deep bodied & stout. He is the second son from Abigail P719 to offered for sale, maternal brother sold in 2023 Bowen bull sale for \$16k. This year we have the first of our Proceed P745 sons for sale.

STRUCTURAL ASSESSMENT									
CLAW SET FRONT	CLAW SET REAR	FRONT FEET ANGLE	REAR FEET ANGLE	REAR LEGS SIDE VIEW	REAR LEGS HINDVIEW	SCROTAL (cm)	TEMP.	SHEATH	
6	5	5	6	5	6	40	1	5	

MID MAY 2024 TRANSTASMAN ANGUS CATTLE EVALUATION

CED	CEM	GL	BW	200d	400d	600d	Mcw	Milk	SS	CWT	EMA	Rib	Rump	RBY	IMF	SELECTION INDEXES			
-6.9	+0.1	-1.3	+5.6	+50.0	+86.0	+95.0	+83.0	+17.0	+2.0	+54.0	+3.8	-1.1	-0.5	+0.8	+0.7	ABI	Dom.	Grain	Grass
65%	56%	81%	81%	82%	80%	81%	78%	74%	79%	70%	69%	69%	70%	60%	74%	\$171	\$161	\$222	\$147



Purchaser: \$

LOT 108 **PEAKES BOWEN PROCEED T557 SV** **HBR**
 Born: 28/07/2022 AMF,CAF,DDF,NHF,DWF,MAF,MHF,OH F,OSF,RGF Tattoo-Brand: T557 **EVT22T557**

STRUCTURAL ASSESSMENT									
CLAW SET FRONT	CLAW SET REAR	FRONT FEET ANGLE	REAR FEET ANGLE	REAR LEGS SIDE VIEW	REAR LEGS HINDVIEW	SCROTAL (cm)	TEMP.	SHEATH	
6	5	5	5	6	6	45	2	4	

Notes:

Proceed T557 is a high-volume sire. He has top end data for foot structure & rates highly for his RBY, EMA, scrotal & mature cow weight data evaluations. Maternal sister sold in 2022 Bowen heifer sale for \$22k.

H P C A PROCEED
SIRE: MILWILLAH PROCEED P745
 MILWILLAH LOWAN H48

TE MANIA INFINITY 04 379
DAM: PEAKES NUMERAL F44
 PEAKES NUMERAL D68

MID MAY 2024 TRANSTASMAN ANGUS CATTLE EVALUATION

CED	CEM	GL	BW	200d	400d	600d	Mcw	Milk	SS	CWT	EMA	Rib	Rump	RBY	IMF	SELECTION INDEXES			
-12.4	-2.3	-5.3	+7.2	+53.0	+96.0	+117.0	+140.0	+6.0	+3.3	+55.0	+9.3	-2.7	-3.2	+1.7	+1.6	ABI	Dom.	Grain	Grass
66%	58%	82%	82%	83%	81%	82%	79%	75%	79%	72%	71%	70%	72%	62%	75%	\$142	\$130	\$186	\$126



Purchaser: \$

LOT 109

PEAKES BOWEN PRIME MINISTER T564 SV

HBR

Born: 07/07/2022

AMF,CAF,DDF,NHC,DWF,MAF,MHF,OH
F,OSF,RGF

Tattoo-Brand: T564

EVT22T564



LOT 109 Sire - DUNOON PRIME MINISTER P758

RENNYLEA NORL508
SIRE: DUNOON PRIME MINISTER P758
DUNOON JAPARA M1008
BULLIAC FUSION F33
DAM: PEAKES LULU K626
PEAKES LULU D34

Notes: This year we have the first of our sons sired by the top selling sire Dunoon Prime Minister P758 who sold for \$140,000 in 2020. This strong son has plenty of scope & has soft slick skin. Prime Minister T564 has short gestation, a moderate birth weight weighing 30kg at birth and a very high EMA, RBY & IMF data ratings. His maternal brothers have sold to \$12K.

STRUCTURAL ASSESSMENT					
CLAW SET FRONT	CLAW SET REAR	FRONT FEET ANGLE	REAR FEET ANGLE		
6	5	5	6		
REAR LEGS SIDE VIEW	REAR LEGS HIND VIEW	SCROTAL (cm)	TEMP.	SHEATH	
6	6	43	1	4	

MID MAY 2024 TRANSTASMAN ANGUS CATTLE EVALUATION

CED	CEM	GL	BW	200d	400d	600d	Mcw	Milk	SS	CWT	EMA	Rib	Rump	RBY	IMF	SELECTION INDEXES			
+4.6	+6.3	-7.5	+3.9	+39.0	+79.0	+107.0	+68.0	+23.0	+3.3	+63.0	+12.4	-0.6	-2.5	+2.0	+3.0	ABI	Dom.	Grain	Grass
63%	53%	83%	81%	82%	80%	81%	77%	73%	78%	69%	69%	68%	69%	60%	73%	\$233	\$192	\$291	\$225



Purchaser: \$

LOT 110

PEAKES BOWEN EDMUND T555 SV

HBR

Born: 07/07/2022

AMF,CAF,DDF,NHF,DWF,MAF,MHF,OH
F,OSF,RGF

Tattoo-Brand: T555

EVT22T555

STRUCTURAL ASSESSMENT									
CLAW SET FRONT	CLAW SET REAR	FRONT FEET ANGLE	REAR FEET ANGLE	REAR LEGS SIDE VIEW	REAR LEGS HIND VIEW	SCROTAL (cm)	TEMP.	SHEATH	
6	5	5	6	5	6	40	1	5	

Notes:

Edmund T555 is a very sound structured free moving sire, he oozes doing ability. Sired by proven the proven calving ease sire Edmund L733. This son has terrific calving ease & IMF data ratings. Maternal brothers have sold to \$22K. Note he has a small spot of white near his testicles.

RENNYLEA EDMUND E11
SIRE: PEAKES BOWEN EDMUND L733
PEAKES LULU H543

BULLIAC DE CASTELLA D1
DAM: PEAKES ABIGAIL H586
BOWEN ABIGAIL B44

MID MAY 2024 TRANSTASMAN ANGUS CATTLE EVALUATION

CED	CEM	GL	BW	200d	400d	600d	Mcw	Milk	SS	CWT	EMA	Rib	Rump	RBY	IMF	SELECTION INDEXES			
+4.6	+6.8	-6.2	+2.7	+45.0	+85.0	+106.0	+108.0	+9.0	+1.2	+60.0	-4.3	+1.6	+2.7	-1.7	+4.3	ABI	Dom.	Grain	Grass
65%	56%	83%	81%	83%	81%	81%	77%	75%	78%	70%	69%	69%	70%	61%	73%	\$168	\$138	\$231	\$149



Purchaser: \$

LOT 111

PEAKES BOWEN REMBRANT T619 SV

HBR

Born: 29/07/2022

AMF,CAF,DDF,NHF,DWF,MAF,MHF,OH
F,OSF,RGF

Tattoo-Brand: T619

EVT22T619



LOT 111 Sire - MILLAH MURRAH REMBRANDT R48

MILLAH MURRAH PARATROOPER P15
SIRE: MILLAH MURRAH REMBRANDT R48
MILLAH MURRAH ABIGAIL N60
MAR INNOVATION 251
DAM: PEAKES BOWEN LULU N520
PEAKES LULU K715

Notes: Rembrant T619 is a strong easy doing type of bull with terrific sires outlook & he has an outcross pedigree. His maternal brother sold for \$14k. He has a low birth weight & weighed 36kg at birth. Rating highly for his scrotal, fats, RBY & structural evaluations. His Sire Millah Murrah Rembrandt R48 sold in 2021 for \$240,000.

STRUCTURAL ASSESSMENT					
CLAW SET FRONT	CLAW SET REAR	FRONT FEET ANGLE	REAR FEET ANGLE		
6	5	5	6		
REAR LEGS SIDE VIEW	REAR LEGS HIND VIEW	SCROTAL (cm)	TEMP.	SHEATH	
5	5	42	1	4	

MID MAY 2024 TRANSTASMAN ANGUS CATTLE EVALUATION

CED	CEM	GL	BW	200d	400d	600d	Mcw	Milk	SS	CWT	EMA	Rib	Rump	RBY	IMF	SELECTION INDEXES			
+4.1	+4.7	-3.2	+3.9	+49.0	+89.0	+109.0	+82.0	+16.0	+4.1	+61.0	+7.0	+0.2	+0.4	+0.7	+1.3	ABI	Dom.	Grain	Grass
65%	54%	83%	81%	83%	80%	81%	77%	72%	79%	68%	68%	68%	69%	60%	72%	\$196	\$168	\$255	\$178



Purchaser: \$

LOT 112 **PEAKES BOWEN QOUNTDOWN T781 SV** **HBR**
 Born: 22/08/2022 AMF,CAF,DDF,NHF,DWF,MAF,MHF,OH F,OSF,RGF Tattoo-Brand: T781 **EVT22T781**

STRUCTURAL ASSESSMENT									
CLAW SET FRONT	CLAW SET REAR	FRONT FEET ANGLE	REAR FEET ANGLE	REAR LEGS SIDE VIEW	REAR LEGS HINDVIEW	SCROTAL (cm)	TEMP.	SHEATH	
6	5	5	6	6	4	44	1	4	

Notes:

A powerful strong bull with fantastic depth to his body. Qountdown T781 has a pedigree stacked with high marbling genetics. Data shows moderate birth weight & high IMF. Note he has a white patch near his testicles.

TE MANIA KIRBY K138
SIRE: TE MANIA QOUNTDOWN Q1290
 TE MANIA BARUNAH J513
 DUNOON GABBA G548
DAM: BOWEN ENNA M574
 PEAKES ENNA J608

MID MAY 2024 TRANSTASMAN ANGUS CATTLE EVALUATION

CED	CEM	GL	BW	200d	400d	600d	Mcw	Milk	SS	CWT	EMA	Rib	Rump	RBY	IMF	SELECTION INDEXES			
+2.3	-2.8	-4.4	+5.4	+46.0	+90.0	+115.0	+102.0	+20.0	+3.1	+56.0	+4.6	+1.7	+2.7	-0.3	+3.7	ABI	Dom.	Grain	Grass
63%	54%	81%	80%	82%	80%	80%	77%	73%	78%	69%	68%	68%	69%	60%	73%	\$210	\$173	\$276	\$197



Purchaser: \$

LOT 113 **PEAKES BOWEN PROCEED T587 SV** **HBR**
 Born: 31/07/2022 AMF,CAF,DDF,NHF,DWF,MAF,MHF,OH F,OSF,RGF Tattoo-Brand: T587 **EVT22T587**

STRUCTURAL ASSESSMENT									
CLAW SET FRONT	CLAW SET REAR	FRONT FEET ANGLE	REAR FEET ANGLE	REAR LEGS SIDE VIEW	REAR LEGS HINDVIEW	SCROTAL (cm)	TEMP.	SHEATH	
6	5	5	6	5	6	42	1	4	

Notes:

Proceed T587 is a powerful free moving young sire who has highly rated evaluations for his structural soundness. His three maternal brothers have averaged \$13k. Grand dam donor Jestress V37 was an exceptional female, very deep bodied with a strong muzzle.

H P C A PROCEED
SIRE: MILWILLAH PROCEED P745
 MILWILLAH LOWAN H48
 WOODBANK 6027 NZE
DAM: PEAKES JESTRESS G147
 MERRIGRANGE JESTRESS V37

MID MAY 2024 TRANSTASMAN ANGUS CATTLE EVALUATION

CED	CEM	GL	BW	200d	400d	600d	Mcw	Milk	SS	CWT	EMA	Rib	Rump	RBY	IMF	SELECTION INDEXES			
-8.0	-1.0	-3.4	+7.1	+54.0	+89.0	+124.0	+136.0	+19.0	+1.3	+61.0	+3.5	-3.6	-3.8	+1.2	+1.2	ABI	Dom.	Grain	Grass
62%	52%	80%	80%	82%	79%	80%	76%	72%	77%	68%	67%	67%	68%	59%	72%	\$115	\$85	\$162	\$96



Purchaser: \$

LOT 114 **PEAKES BOWEN IDENTITY T798 SV** **HBR**
 Born: 22/08/2022 AMF,CAF,DDF,NHF,DWF,MAF,MHF,OH F,OSF,RGF Tattoo-Brand: T798 **EVT22T798**



LOT 114 Sire - MILWILLAH IDENTITY P134

KOUPALS B&B IDENTITY
SIRE: MILWILLAH IDENTITY P134
 MILWILLAH BARUNAH K26
 MURDEDUKE KURRAJONG K18
DAM: PEAKES BOWEN LULU N635
 PEAKES LULU G60

Notes: Identity T798 is a strong slick skinned son of Identity P134 that covers a lot of ground. Sire Identity P134 sons have sold to \$32K & daughters have sold to \$22K. Note he has a very small dot of white near his testicles.

STRUCTURAL ASSESSMENT									
CLAW SET FRONT	CLAW SET REAR	FRONT FEET ANGLE	REAR FEET ANGLE	REAR LEGS SIDE VIEW	REAR LEGS HINDVIEW	SCROTAL (cm)	TEMP.	SHEATH	
6	5	6	6	6	6	41	1	4	

MID MAY 2024 TRANSTASMAN ANGUS CATTLE EVALUATION

CED	CEM	GL	BW	200d	400d	600d	Mcw	Milk	SS	CWT	EMA	Rib	Rump	RBY	IMF	SELECTION INDEXES			
-3.5	-0.2	-4.4	+6.5	+54.0	+94.0	+124.0	+129.0	+14.0	+3.0	+74.0	+5.8	-0.6	-0.4	+0.2	+1.2	ABI	Dom.	Grain	Grass
62%	53%	81%	80%	82%	79%	80%	76%	72%	77%	67%	67%	67%	68%	59%	71%	\$164	\$138	\$213	\$149



Purchaser: \$

LOT 115 **PEAKES BOWEN QARARA T592^{SV}** **HBR**
 Born: 06/07/2022 AMF,CAF,DDF,NHF,DWF,MAF,MHF,OH F,OSF,RGF Tattoo-Brand: T592 **EVT22T592**

STRUCTURAL ASSESSMENT										
CLAW SET FRONT	CLAW SET REAR	FRONT FEET ANGLE	REAR FEET ANGLE	REAR LEGS SIDE VIEW	REAR LEGS HINDVIEW	SCROTAL (cm)	TEMP.	SHEATH		
6	5	5	6	5	6	45	1	4		

Notes:

This soft smooth skinned son of Qarara Q514, he has terrific calving ease & fertility data credentials. This year is the first of sons Qarara Q514 sons for sale, he is a very sound & correct sire. We have continued to use him over successfully over our yearling heifers.

TE MANIA KIRBY K138
SIRE: TE MANIA QARARA Q514
 TE MANIA BARUNAH L537
 MATAURI REALITY 839 NZ
DAM: PEAKES LOWAN K685
 PEAKES LOWAN H621

MID MAY 2024 TRANSTASMAN ANGUS CATTLE EVALUATION

CED	CEM	GL	BW	200d	400d	600d	Mcw	Milk	SS	CWT	EMA	Rib	Rump	RBY	IMF	SELECTION INDEXES			
+8.5	+7.6	-8.4	+2.5	+47.0	+81.0	+103.0	+87.0	+18.0	+3.7	+51.0	-1.2	+0.6	+0.5	-0.9	+2.2	ABI	Dom.	Grain	Grass
65%	56%	83%	82%	83%	81%	82%	78%	73%	79%	70%	70%	69%	71%	62%	74%	\$165	\$137	\$220	\$147



Purchaser: \$

LOT 116 **PEAKES BOWEN REGENT T809^{SV}** **HBR**
 Born: 18/08/2022 AMF,CAF,DDF,NHF,DWF,MAF,MHF,OH F,OSF,RGF Tattoo-Brand: T809 **EVT22T809**



TUWHARETOA REGENT D145
SIRE: PEAKES BOWEN REGENT M517
 PEAKES ABIGAIL G68
 BT RIGHT TIME 24J
DAM: PEAKES LULU E32
 BOWEN LULU Z42

Notes: A long bodied high yielding son of Regent M517. His dam Lulu E32 has been a very sound breeding cow who had terrific longevity. Her five sons have sold to average \$11k. See photo of his maternal sister Peakes Bowen Lulu R624 taken at 18 months of age.

STRUCTURAL ASSESSMENT									
CLAW SET FRONT	CLAW SET REAR	FRONT FEET ANGLE	REAR FEET ANGLE	REAR LEGS SIDE VIEW	REAR LEGS HINDVIEW	SCROTAL (cm)	TEMP.	SHEATH	
6	5	5	6	4	6	40	1	5	

MID MAY 2024 TRANSTASMAN ANGUS CATTLE EVALUATION

CED	CEM	GL	BW	200d	400d	600d	Mcw	Milk	SS	CWT	EMA	Rib	Rump	RBY	IMF	SELECTION INDEXES			
+3.1	-1.1	-4.0	+4.1	+50.0	+88.0	+122.0	+103.0	+20.0	+0.6	+76.0	+4.4	-4.1	-5.4	+1.4	+1.5	ABI	Dom.	Grain	Grass
64%	57%	81%	81%	82%	80%	81%	77%	74%	78%	70%	69%	69%	70%	62%	74%	\$176	\$142	\$227	\$159



Purchaser: \$

LOT 117 **PEAKES BOWEN REGAL FOCUS T799^{SV}** **HBR**
 Born: 20/08/2022 AMF,CAF,DDF,NHF,DWF,MAF,MHF,OH F,OSF,RGF Tattoo-Brand: T799 **EVT22T799**

STRUCTURAL ASSESSMENT									
CLAW SET FRONT	CLAW SET REAR	FRONT FEET ANGLE	REAR FEET ANGLE	REAR LEGS SIDE VIEW	REAR LEGS HINDVIEW	SCROTAL (cm)	TEMP.	SHEATH	
6	5	5	6	6	6	42	1	4	

Notes:

Identity T799 rates highly for EMA, IMF & fertility evaluations. His pedigree contains some of our best performing cow families featuring the Lowan, Annie & Abigail lines. His maternal brother sold in 2020 Bowen bull sale for \$11K.

TUWHARETOA REGENT D145
SIRE: PEAKES BOWEN REGAL FOCUS P746
 PEAKES LOWAN K685

KANSAS EVIDENTLY J81
DAM: PEAKES BOWEN ABIGAIL M658
 BOWEN ABIGAIL X13

MID MAY 2024 TRANSTASMAN ANGUS CATTLE EVALUATION

CED	CEM	GL	BW	200d	400d	600d	Mcw	Milk	SS	CWT	EMA	Rib	Rump	RBY	IMF	SELECTION INDEXES			
-2.8	-5.2	-1.0	+5.2	+45.0	+77.0	+97.0	+101.0	+14.0	+3.2	+57.0	+9.0	-0.2	-1.2	+0.6	+3.3	ABI	Dom.	Grain	Grass
63%	54%	81%	80%	82%	80%	80%	77%	72%	77%	69%	67%	67%	69%	59%	72%	\$175	\$145	\$232	\$159



Purchaser: \$

LOT 118 **PEAKES BOWEN ELSOM T847** **UN - REG**
 Born: 21/07/2022 Tattoo-Brand: T847 **EVT22T847**

STRUCTURAL ASSESSMENT									
CLAW SET FRONT	CLAW SET REAR	FRONT FEET ANGLE	REAR FEET ANGLE	REAR LEGS SIDE VIEW	REAR LEGS HINDVIEW	SCROTAL (cm)	TEMP.	SHEATH	
6	5	5	6	4	6	39	1	5	

Notes:

A high growth long bodied smooth skinned son of Peakes Bowen Elsom P773 who sold in the 2020 Bowen Bull sale for \$22k.

MILWILLAH ELSOM H283
SIRE: PEAKES BOWEN ELSOM P773
 PEAKES CLEMYNTYNE K546
 PEAKES LAD K638
DAM: PEAKES BOWEN P576
 PEAKES BOWEN F003

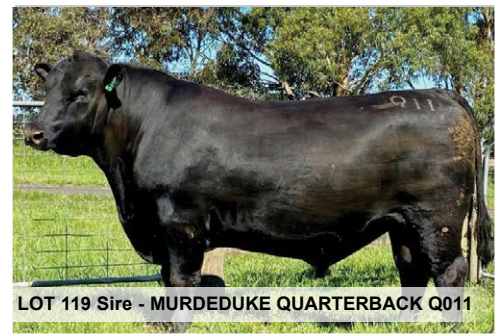
SIRE PEAKES BOWEN ELSOM P773 - MAY 2024 TRANS TASMAN ANGUS CATTLE EVALUATION

CED	CEM	GL	BW	200d	400d	600d	Mcw	Milk	SS	CWT	EMA	Rib	Rump	RBV	IMF	SELECTION INDEXES			
+4.3	+1.6	-2.2	+2.6	+41.0	+81.0	+117.0	+114.0	+18.0	+0.9	+63.0	+5.0	-4.1	-4.5	+0.8	+2.8	ABI	Dom.	Grain	Grass
66%	56%	83%	82%	84%	82%	83%	79%	76%	81%	74%	73%	73%	74%	66%	77%	\$129	\$92	\$178	\$115



Purchaser: \$

LOT 119 **PEAKES BOWEN QUARTERBACK T582 SV** **HBR**
 Born: 07/07/2022 AMF,CAF,DDF,NHF,DWF,MAF,MHF,OH Tattoo-Brand: T582 **EVT22T582**
 F,OSF,RGF



LAWSONS MOMENTOUS M518
SIRE: MURDEDUKE QUARTERBACK Q011
 MURDEDUKE BARUNAH N026
 MILWILLAH LAD E158
DAM: PEAKES LULU K520
 PEAKES LULU F98

Notes: Outcross pedigree with the first of our Quarterback Q011 sons being offered this year. Quarterback T582 has fantastic calving ease credentials with low birth weight & shorter gestation, and he has a very high IMF data evaluation. We have retained two maternal sisters in our stud. Dam Lulu K520 sons have sold to \$20k & a daughter sold for \$6500.

STRUCTURAL ASSESSMENT									
CLAW SET FRONT	CLAW SET REAR	FRONT FEET ANGLE	REAR FEET ANGLE	REAR LEGS SIDE VIEW	REAR LEGS HINDVIEW	SCROTAL (cm)	TEMP.	SHEATH	
6	5	5	6	5	6	37	1	4	

MID MAY 2024 TRANSTASMAN ANGUS CATTLE EVALUATION

CED	CEM	GL	BW	200d	400d	600d	Mcw	Milk	SS	CWT	EMA	Rib	Rump	RBV	IMF	SELECTION INDEXES			
+3.6	+4.2	-6.1	+3.6	+39.0	+73.0	+101.0	+102.0	+12.0	+2.7	+53.0	+6.3	+0.3	0.0	+0.1	+4.0	ABI	Dom.	Grain	Grass
69%	59%	83%	82%	83%	82%	82%	79%	75%	80%	72%	72%	71%	72%	63%	76%	\$171	\$132	\$225	\$159



Purchaser: \$

LOT 120 **PEAKES BOWEN PRIME MINISTER T669 PV** **HBR**
 Born: 07/07/2022 AMF,CAF,DDF,NHF,DWF,MAF,MHF,OH Tattoo-Brand: T669 **EVT22T669**
 F,OSF,RGF



RENNYLEA NORL508
SIRE: DUNOON PRIME MINISTER P758
 DUNOON JAPARA M1008
 VISION UNANIMOUS 1418
DAM: PEAKES BOWEN VICKY P788
 PEAKES VICKY K525

Notes: A soft slick skinned bull with a deep barrel. Prime Minister T669 has short gestation data with an actual birth weight of 34kg. The first of our Prime Minister P758 sons sell this year, he is an impressive sire used throughout the Angus breed. This is the third son from dam Vicky P788 to be offered for sale, two maternal brothers have sold to average \$13k at previous Bowen bull sales. Note he has a birth mark below his ear on his near side neck & a very small spot of white near his testicles.

STRUCTURAL ASSESSMENT									
CLAW SET FRONT	CLAW SET REAR	FRONT FEET ANGLE	REAR FEET ANGLE	REAR LEGS SIDE VIEW	REAR LEGS HINDVIEW	SCROTAL (cm)	TEMP.	SHEATH	
6	5	5	6	5	6	41	1	5	

MID MAY 2024 TRANSTASMAN ANGUS CATTLE EVALUATION

CED	CEM	GL	BW	200d	400d	600d	Mcw	Milk	SS	CWT	EMA	Rib	Rump	RBV	IMF	SELECTION INDEXES			
+3.5	+1.1	-6.6	+5.0	+48.0	+99.0	+135.0	+123.0	+21.0	+5.2	+64.0	+6.3	+0.3	+0.3	+0.5	+2.4	ABI	Dom.	Grain	Grass
64%	54%	83%	82%	83%	81%	81%	77%	73%	79%	70%	70%	69%	70%	61%	74%	\$189	\$155	\$241	\$182



Purchaser: \$

LOT 121 **PEAKES BOWEN QOUNTDOWN T715 SV** **HBR**
 Born: 10/08/2022 AMF,CAF,DDF,NHF,DWF,MAF,MHF,OH F,OSF,RGF Tattoo-Brand: T715 **EVT22T715**

STRUCTURAL ASSESSMENT									
CLAW SET FRONT	CLAW SET REAR	FRONT FEET ANGLE	REAR FEET ANGLE	REAR LEGS SIDE VIEW	REAR LEGS HINDVIEW	SCROTAL (cm)	TEMP.	SHEATH	
6	5	5	6	5	6	41	2	4	

Notes:

Qountdown T715 has very high IMF & fats data evaluations. He is a strong powerful bull, his pedigree contains the top performing cow lines of Barunah, Beeac & Lulu going back to our legendary donor Lulu W27.

TE MANIA KIRBY K138
SIRE: TE MANIA QOUNTDOWN Q1290
 TE MANIA BARUNAH J513
 TUWHARETOA REGENT D145
DAM: PEAKES BOWEN LULU L565
 PEAKES LULU D52

MID MAY 2024 TRANSTASMAN ANGUS CATTLE EVALUATION

CED	CEM	GL	BW	200d	400d	600d	Mcw	Milk	SS	CWT	EMA	Rib	Rump	RBV	IMF	SELECTION INDEXES			
-9.0	-10.7	-1.5	+8.0	+51.0	+95.0	+121.0	+127.0	+11.0	+3.0	+65.0	+5.5	+3.8	+3.6	-0.9	+5.6	ABI	Dom.	Grain	Grass
63%	55%	81%	80%	82%	79%	80%	77%	73%	77%	69%	68%	68%	69%	60%	73%	\$192	\$153	\$268	\$183



Purchaser: \$

LOT 122 **PEAKES BOWEN PRIME MINISTER T554 SV** **HBR**
 Born: 07/07/2022 AMF,CAF,DDF,NHF,DWF,MAF,MHF,OH F,OSF,RGF Tattoo-Brand: T554 **EVT22T554**

STRUCTURAL ASSESSMENT									
CLAW SET FRONT	CLAW SET REAR	FRONT FEET ANGLE	REAR FEET ANGLE	REAR LEGS SIDE VIEW	REAR LEGS HINDVIEW	SCROTAL (cm)	TEMP.	SHEATH	
6	5	5	6	6	6	39	1	4	

Notes:

Prime Minister T554 ticks a lot of boxes, he is very deep with a soft slick skin. Data shows very short gestation length, weighing 36kg at birth. He rates well for his fertility & IMF data evaluation. Two maternal brothers have sold at previous Bowen bull sales to average \$17k. The first of our Prime Minister P758 sons sell this year, he is an impressive sire used throughout the Angus breed. Note he has a small white spot in front of his testicles.

RENNYLEA NORL508
SIRE: DUNOON PRIME MINISTER P758
 DUNOON JAPARA M1008
 BULLIAC FUSION F33
DAM: PEAKES BOWEN ENNA L655
 PEAKES ENNA F82

MID MAY 2024 TRANSTASMAN ANGUS CATTLE EVALUATION

CED	CEM	GL	BW	200d	400d	600d	Mcw	Milk	SS	CWT	EMA	Rib	Rump	RBV	IMF	SELECTION INDEXES			
+5.5	+9.4	-9.4	+4.4	+47.0	+88.0	+117.0	+107.0	+17.0	+3.7	+46.0	+6.5	0.0	+1.1	+0.6	+2.9	ABI	Dom.	Grain	Grass
63%	53%	83%	81%	83%	81%	81%	77%	73%	79%	70%	69%	69%	70%	61%	73%	\$221	\$183	\$282	\$210



Purchaser: \$

LOT 123 **PEAKES BOWEN PRIME MINISTER T665** **UN - REG**
 Born: 26/07/2022 Tattoo-Brand: T665 **EVT22T665**

STRUCTURAL ASSESSMENT									
CLAW SET FRONT	CLAW SET REAR	FRONT FEET ANGLE	REAR FEET ANGLE	REAR LEGS SIDE VIEW	REAR LEGS HINDVIEW	SCROTAL (cm)	TEMP.	SHEATH	
6	5	5	6	4	6	42	1	5	

Notes:

A deep soft easy doing type of bull. The first of our Prime Minister P758 sons sell this year, he is an impressive sire used throughout the Angus breed.

RENNYLEA L508
SIRE: DUNOON PRIME MINISTER P758
 DUNOON JAPARA M1008
 BULLIAC FUSION F33
DAM: PEAKES BOWEN K821
 PEAKES BOWEN H788

SIRE DUNOON PRIME MINISTER P758 - MAY 2024 TRANSTASMAN ANGUS CATTLE EVALUATION

CED	CEM	GL	BW	200d	400d	600d	Mcw	Milk	SS	CWT	EMA	Rib	Rump	RBV	IMF	SELECTION INDEXES			
+1.4	+4.3	-10.0	+5.9	+56.0	+105.0	+145.0	+136.0	+21.0	+4.2	+70.0	+11.9	-1.2	-1.6	+1.4	+3.5	ABI	Dom.	Grain	Grass
74%	64%	98%	99%	98%	98%	98%	90%	84%	98%	84%	86%	85%	85%	79%	85%	\$242	\$194	\$312	\$234



Purchaser: \$

LOT 124

PEAKES BOWEN ROCKETMAN T771 PV

HBR

Born: 06/09/2022

AMF,CAF,DDF,NHF,DWF,MAF,MHF,OH
F,OSF,RGF

Tattoo-Brand: T771

EVT22T771



LOT 124 Sire - MILLAH MURRAH ROCKET MAN R38

MILLAH MURRAH PARATROOPER P15
SIRE: MILLAH MURRAH ROCKET MAN R38
 MILLAH MURRAH ABIGAIL P57
 BT RIGHT TIME 24J
DAM: PEAKES MONICA E11
 KANSAS MONICA W67

Notes: Sired by the highly rated sought after sire Millah Murrah Rocket Man R38. Rocket Man T771 has beautiful soft slick skin with easy doing qualities. He has outstanding calving ease credentials with short gestation & very low birth weight evaluations, weighing 32kg at birth. Donor dam Monica E11 has longevity which is a great trait to see in a cow, a true testament to her terrific structure & overall constitution. Her sons have sold to a top of \$34k & we have retained many of her daughters.

STRUCTURAL ASSESSMENT					
CLAW SET FRONT	CLAW SET REAR	FRONT FEET ANGLE	REAR FEET ANGLE		
6	5	5	6		
REAR LEGS SIDE VIEW	REAR LEGS HIND VIEW	SCROTAL (cm)	TEMP.	SHEATH	
6	6	39	1	4	

MID MAY 2024 TRANSTASMAN ANGUS CATTLE EVALUATION

CED	CEM	GL	BW	200d	400d	600d	Mcw	Milk	SS	CWT	EMA	Rib	Rump	RBY	IMF	SELECTION INDEXES			
+8.3	+3.2	-7.4	+1.7	+41.0	+89.0	+107.0	+71.0	+16.0	+1.9	+61.0	+6.3	+2.0	+6.0	-0.6	+2.4	ABI	Dom.	Grain	Grass
67%	57%	83%	82%	83%	82%	82%	78%	74%	80%	70%	70%	70%	71%	63%	74%	\$211	\$178	\$282	\$196



Purchaser: \$

LOT 125

PEAKES BOWEN PRIME MINISTER T422 SV

HBR

Born: 14/07/2022

AMF,CAF,DDF,NHF,DWF,MAF,MHF,OH
F,OSF,RGF

Tattoo-Brand: T422

EVT22T422

STRUCTURAL ASSESSMENT									
CLAW SET FRONT	CLAW SET REAR	FRONT FEET ANGLE	REAR FEET ANGLE	REAR LEGS SIDE VIEW	REAR LEGS HIND VIEW	SCROTAL (cm)	TEMP.	SHEATH	
6	5	5	6	6	6	40	1	5	

Notes:

Prime Minister T422 is as long as a train. He has short gestation with a very low actual birth weight of 29kg. Data shows high RBY, milk & mature cow weight data evaluations. At weaning he was the 2nd heaviest in his mob. The first of our Prime Minister P758 sons sell this year, he is an impressive sire used throughout the Angus breed. He sold for a top price of \$140,000.

RENNYLEA NORL508
SIRE: DUNOON PRIME MINISTER P758
 DUNOON JAPARA M1008

KIDMAN PRECEDENCE K72
DAM: PEAKES BOWEN GRIDMAKER Q771
 PEAKES GRIDMAKER K708

MID MAY 2024 TRANSTASMAN ANGUS CATTLE EVALUATION

CED	CEM	GL	BW	200d	400d	600d	Mcw	Milk	SS	CWT	EMA	Rib	Rump	RBY	IMF	SELECTION INDEXES			
+1.4	+3.6	-6.2	+5.2	+42.0	+93.0	+128.0	+146.0	+25.0	+2.0	+60.0	+6.8	-1.1	-3.3	+1.8	+1.9	ABI	Dom.	Grain	Grass
63%	53%	82%	81%	83%	81%	81%	77%	73%	79%	69%	69%	69%	69%	60%	73%	\$151	\$126	\$193	\$142



Purchaser: \$

LOT 126

PEAKES BOWEN BLACK PEARL T437

UN - REG

Born: 21/07/2022

Tattoo-Brand: T437

EVT22T437

STRUCTURAL ASSESSMENT									
CLAW SET FRONT	CLAW SET REAR	FRONT FEET ANGLE	REAR FEET ANGLE	REAR LEGS SIDE VIEW	REAR LEGS HIND VIEW	SCROTAL (cm)	TEMP.	SHEATH	
7	5	5	6	4	6	39	1	5	

Notes:

A Black Pearl P645 son, he is long bodied with fantastic soft slick skin. He is from a terrific cow line, grand dam L708 sons have sold to \$22K & we have retained many of her daughters. Note he has a white patch in front of his testicles.

KAROO BLACK PEARL L125
SIRE: PEAKES BOWEN BLACK PEARL P645
 PEAKES ABIGAIL K530

PEAKES BOWEN REGENT M517
DAM: PEAKES BOWEN Q642
 PEAKES BOWEN L708

SIRE PEAKES BOWEN BLACK PEARL P645 - MAY 2024 TRANSTASMAN ANGUS CATTLE EVALUATION

CED	CEM	GL	BW	200d	400d	600d	Mcw	Milk	SS	CWT	EMA	Rib	Rump	RBY	IMF	SELECTION INDEXES			
-1.8	+3.5	-2.7	+3.5	+51.0	+97.0	+135.0	+100.0	+29.0	+1.2	+80.0	+1.9	-0.5	-2.5	+0.1	+2.5	ABI	Dom.	Grain	Grass
74%	58%	76%	94%	92%	91%	90%	84%	75%	88%	78%	73%	74%	74%	66%	76%	\$181	\$139	\$241	\$165



Purchaser: \$

LOT 127 **PEAKES BOWEN QOUNTDOWN T846** **UN - REG**
 Born: 25/07/2022 Tattoo-Brand: T846 **EVT22T846**

STRUCTURAL ASSESSMENT									
CLAW SET FRONT	CLAW SET REAR	FRONT FEET ANGLE	REAR FEET ANGLE	REAR LEGS SIDE VIEW	REAR LEGS HINDVIEW	SCROTAL (cm)	TEMP.	SHEATH	
6	5	5	6	5	4	39	1	5	

Notes:

A soft deep barrelled son of Qountdown Q1290. T846 had the second highest IMF measurement in his mob at scanning. Sire Qountdown Q1290 had a great carcass & his IMF data evaluation is rated in the top 2% of the breed. The first sons of Q1290 sold as yearling bulls at our 2023 Bowen bull sale.

TE MANIA KIRBY K138
SIRE: TE MANIA QOUNTDOWN Q1290
 TE MANIA BARUNAH J513
 KIDMAN PRECEDENCE K72
DAM: PEAKES BOWEN Q812
 PEAKES BOWEN K577

SIRE TE MANIA QOUNTDOWN Q1290 - MAY 2024 TRANS TASMAN ANGUS CATTLE EVALUATION

CED	CEM	GL	BW	200d	400d	600d	Mcw	Milk	SS	CWT	EMA	Rib	Rump	RBV	IMF	SELECTION INDEXES			
+1.7	+3.0	-2.5	+6.2	+56.0	+103.0	+134.0	+137.0	+11.0	+3.1	+73.0	+2.7	+2.2	+2.0	-1.3	+6.0	ABI	Dom.	Grain	Grass
71%	64%	85%	86%	90%	87%	89%	85%	80%	87%	80%	78%	78%	79%	73%	80%	\$240	\$195	\$322	\$232



Purchaser: \$

LOT 128 **PEAKES BOWEN QOUNTDOWN T733^{SV}** **HBR**
 Born: 05/09/2022 **AMF,CAF,DDF,NHF,DWF,MAF,MHF,OH** Tattoo-Brand: T733 **EVT22T733**
F,OSF,RGF

STRUCTURAL ASSESSMENT									
CLAW SET FRONT	CLAW SET REAR	FRONT FEET ANGLE	REAR FEET ANGLE	REAR LEGS SIDE VIEW	REAR LEGS HINDVIEW	SCROTAL (cm)	TEMP.	SHEATH	
6	5	5	6	5	5	41	1	5	

Notes:

A powerful son of Qountdown Q1290, note his thick topline & deep barrel. Data rates very high IMF with high fats, structural & fertility evaluations. Qountdown T733 Pedigree contains the top performing cow lines of Barunah, Beec & Lulu going back to our legendary donor Lulu R13.

TE MANIA KIRBY K138
SIRE: TE MANIA QOUNTDOWN Q1290
 TE MANIA BARUNAH J513
 PEAKES LAD K638
DAM: PEAKES BOWEN LULU Q611
 PEAKES LULU D42

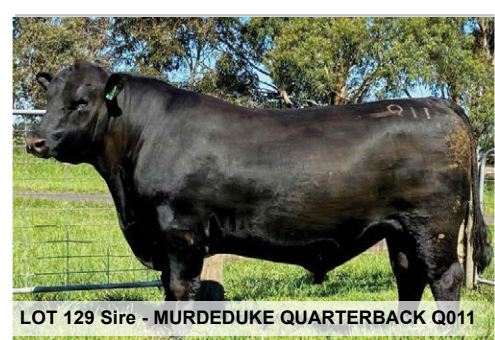
MID MAY 2024 TRANSTASMAN ANGUS CATTLE EVALUATION

CED	CEM	GL	BW	200d	400d	600d	Mcw	Milk	SS	CWT	EMA	Rib	Rump	RBV	IMF	SELECTION INDEXES			
+0.7	+3.0	-5.1	+5.2	+49.0	+87.0	+115.0	+110.0	+15.0	+3.2	+66.0	+3.9	+2.5	+0.8	-1.1	+5.0	ABI	Dom.	Grain	Grass
63%	54%	81%	81%	82%	80%	81%	77%	73%	78%	70%	69%	69%	70%	60%	74%	\$195	\$152	\$266	\$183



Purchaser: \$

LOT 129 **PEAKES BOWEN QUARTERBACK T762^{PV}** **HBR**
 Born: 02/09/2022 **AMF,CAF,DDF,NHF,DWF,MAF,MHF,OH** Tattoo-Brand: T762 **EVT22T762**
F,OSF,RGF



LOT 129 Sire - MURDEDUKE QUARTERBACK Q011

LAWSONS MOMENTOUS M518
SIRE: MURDEDUKE QUARTERBACK Q011
 MURDEDUKE BARUNAH N026
 HIGHLANDER OF STERN NZ
DAM: PEAKES ABIGAIL G68
 PEAKES ABIGAIL E78

Notes: Quarterback T762 oozes quality, a very soft easy doing type of bull. He comes with an impressive data set, excellent calving ease with very short gestation & low birth weight. Rating highly for his IMF, fats & docility data evaluations. He had the equal second highest IMF measurement in his mob at scanning. Donor dam Abigail G68 is a beautiful cow. Maternal brothers have sold to \$18K twice averaging \$12,600 for seven sons sold. Full ET brother to T764 Lot 39 2024 Bowen Charity Bull, T776 Lot 81 & T770 Lot 132.

STRUCTURAL ASSESSMENT									
CLAW SET FRONT	CLAW SET REAR	FRONT FEET ANGLE	REAR FEET ANGLE	REAR LEGS SIDE VIEW	REAR LEGS HINDVIEW	SCROTAL (cm)	TEMP.	SHEATH	
7	6	6	6	4	6	44	1	5	

MID MAY 2024 TRANSTASMAN ANGUS CATTLE EVALUATION

CED	CEM	GL	BW	200d	400d	600d	Mcw	Milk	SS	CWT	EMA	Rib	Rump	RBV	IMF	SELECTION INDEXES			
+6.7	-0.3	-9.9	+2.1	+48.0	+92.0	+122.0	+119.0	+25.0	+4.4	+67.0	-2.4	+0.9	+0.1	-1.3	+3.9	ABI	Dom.	Grain	Grass
69%	61%	83%	82%	84%	82%	82%	79%	76%	80%	72%	72%	72%	73%	64%	76%	\$164	\$130	\$223	\$150



Purchaser: \$

LOT 130

PEAKES BOWEN QUARTERBACK T598 SV

HBR

Born: 08/07/2022

AMF,CAF,DDF,NHF,DWF,MAF,MHF,OH
F,OSF,RGF

Tattoo-Brand: T598

EVT22T598



LAWSONS MOMENTOUS M518
SIRE: MURDEDUKE QUARTERBACK Q011
 MURDEDUKE BARUNAH N026
 VISION UNANIMOUS 1418
DAM: PEAKES BOWEN LULU N551
 PEAKES LULU K594

Notes: Quarterback T598 has a terrific barrel & loads of muscle. He has short gestation, is low birth weight with high EMA, IMF & structural data evaluations. Offers an outcross pedigree with the first of Quarterback sons being offered this year.

STRUCTURAL ASSESSMENT					
CLAW SET FRONT	CLAW SET REAR	FRONT FEET ANGLE	REAR FEET ANGLE		
6	5	5	6		
REAR LEGS SIDE VIEW	REAR LEGS HINDVIEW	SCROTAL (cm)	TEMP.	SHEATH	
5	5	40	1	5	

MID MAY 2024 TRANSTASMAN ANGUS CATTLE EVALUATION

CED	CEM	GL	BW	200d	400d	600d	Mcw	Milk	SS	CWT	EMA	Rib	Rump	RBY	IMF	SELECTION INDEXES			
+2.8	-1.0	-7.0	+3.7	+48.0	+90.0	+123.0	+110.0	+12.0	+2.8	+75.0	+10.8	+0.1	-0.3	+0.5	+3.5	ABI	Dom.	Grain	Grass
68%	58%	83%	82%	83%	81%	82%	79%	75%	80%	72%	71%	71%	72%	62%	75%	\$210	\$165	\$276	\$200



Purchaser: \$

LOT 131

PEAKES BOWEN CHISUM T438 SV

HBR

Born: 03/08/2022

AMF,CAF,DDF,NHF,DWF,MAF,MHF,OH
F,OSF,RGF

Tattoo-Brand: T438

EVT22T438

STRUCTURAL ASSESSMENT									
CLAW SET FRONT	CLAW SET REAR	FRONT FEET ANGLE	REAR FEET ANGLE	REAR LEGS SIDE VIEW	REAR LEGS HINDVIEW	SCROTAL (cm)	TEMP.	SHEATH	
6	5	5	6	5	6	35	1	4	

Notes:

Chisum T438 is built for calving ease with his smooth laid in shoulder setting, he has low birth weight & short gestation data weighing 32kg at birth. He rates well for his carcass weight, fats & IMF evaluations. He is the second calf from Leah Q618, maternal sister has been retained in stud. Note he has a white patch in front of his testicles.

S CHISUM 255
SIRE: PREMIER CHISUM R24
 PREMIER LOWAN J1
 PEAKES BOWEN REGENT M517
DAM: PEAKES BOWEN LEAH Q618
 PEAKES BOWEN LEAH L720

MID MAY 2024 TRANSTASMAN ANGUS CATTLE EVALUATION

CED	CEM	GL	BW	200d	400d	600d	Mcw	Milk	SS	CWT	EMA	Rib	Rump	RBY	IMF	SELECTION INDEXES			
+5.6	+7.4	-6.6	+2.3	+43.0	+75.0	+105.0	+31.0	+33.0	-1.6	+80.0	+6.8	+2.5	+1.6	+0.1	+2.6	ABI	Dom.	Grain	Grass
62%	53%	81%	80%	82%	79%	80%	76%	72%	77%	68%	67%	67%	68%	58%	72%	\$247	\$188	\$328	\$228



Purchaser: \$

LOT 132

PEAKES BOWEN QUARTERBACK T770 PV

HBR

Born: 06/09/2022

AMF,CAF,DDF,NHF,DWF,MAF,MHF,OH
F,OSF,RGF

Tattoo-Brand: T770

EVT22T770

STRUCTURAL ASSESSMENT									
CLAW SET FRONT	CLAW SET REAR	FRONT FEET ANGLE	REAR FEET ANGLE	REAR LEGS SIDE VIEW	REAR LEGS HINDVIEW	SCROTAL (cm)	TEMP.	SHEATH	
6	5	5	6	6	5	42	1	5	

Notes:

A very soft quality bull typical of the Quarterback Q011 progeny. Quarterback T770 has a top shelf pedigree combination. Donor dam Abigail G68 is a beautiful cow. Maternal brothers have sold to \$18K twice averaging \$12,600 for seven sons sold. He rates highly for shorter gestation & lower birth weight with high scrotal & IMF evaluations. Full ET brother to T776 Lot 81, T762 Lot 129 & T764 Lot 39 2024 Bowen Charity Bull. Note he has a touch of white in front of his testicles.

LAWSONS MOMENTOUS M518
SIRE: MURDEDUKE QUARTERBACK Q011
 MURDEDUKE BARUNAH N026
 HIGHLANDER OF STERN NZ
DAM: PEAKES ABIGAIL G68
 PEAKES ABIGAIL E78

MID MAY 2024 TRANSTASMAN ANGUS CATTLE EVALUATION

CED	CEM	GL	BW	200d	400d	600d	Mcw	Milk	SS	CWT	EMA	Rib	Rump	RBY	IMF	SELECTION INDEXES			
+6.0	-4.6	-6.1	+3.7	+52.0	+95.0	+134.0	+149.0	+16.0	+4.7	+68.0	+1.5	-0.8	-0.5	-0.2	+3.2	ABI	Dom.	Grain	Grass
70%	61%	83%	83%	84%	82%	83%	80%	76%	81%	73%	73%	72%	73%	64%	76%	\$159	\$121	\$212	\$148



Purchaser: \$

LOT 133

PEAKES BOWEN PROCEED T668 SV

HBR

Born: 20/07/2022

AMF,CAF,DDF,NHF,DWF,MAF,MHF,OH
F,OSF,RGF

Tattoo-Brand: T668

EVT22T668



LOT 133 Sire - MILWILLAH PROCEED P745

H P C A PROCEED
SIRE: MILWILLAH PROCEED P745
 MILWILLAH LOWAN H48
 HIGHLANDER OF STERN NZ
DAM: PEAKES PRIMROSE H541
 PEAKES PRIMROSE E40

Notes: Proceed T668 has loads of capacity with his terrific carcass attributes. His data is highly rated for structure & docility with a good IMF evaluation. His dam Primrose H541 has been a sound breeding Highlander of Stern daughter, her six sons have sold to average \$15k.

STRUCTURAL ASSESSMENT					
CLAW SET FRONT	CLAW SET REAR	FRONT FEET ANGLE	REAR FEET ANGLE		
6	5	5	6		
REAR LEGS SIDE VIEW	REAR LEGS HIND VIEW	SCROTAL (cm)	TEMP.	SHEATH	
5	6	40	1	5	

MID MAY 2024 TRANSTASMAN ANGUS CATTLE EVALUATION

CED	CEM	GL	BW	200d	400d	600d	Mcw	Milk	SS	CWT	EMA	Rib	Rump	RBY	IMF	SELECTION INDEXES			
-6.5	-0.2	-7.2	+7.2	+48.0	+84.0	+115.0	+117.0	+17.0	+1.5	+58.0	+4.1	-0.3	0.0	0.0	+3.1	ABI	Dom.	Grain	Grass
65%	56%	82%	81%	83%	81%	82%	78%	74%	79%	71%	70%	70%	71%	62%	74%	\$154	\$118	\$208	\$137



Purchaser: \$

LOT 134

PEAKES BOWEN BLACKHAWK T465 SV

HBR

Born: 02/08/2022

AMF,CAF,DDF,NHF,DWF,MAF,MHF,OH
F,OSF,RGF

Tattoo-Brand: T465

EVT22T465

STRUCTURAL ASSESSMENT									
CLAW SET FRONT	CLAW SET REAR	FRONT FEET ANGLE	REAR FEET ANGLE	REAR LEGS SIDE VIEW	REAR LEGS HIND VIEW	SCROTAL (cm)	TEMP.	SHEATH	
6	5	5	6	6	6	41	1	5	

TOPBOS LEADING EDGE L292
SIRE: DUNOON BLACK HAWK Q857
 DUNOON BLACKBIRD L785

PEAKES BOWEN TOTAL FOCUS M794
DAM: PEAKES BOWEN LULU Q549
 PEAKES BOWEN LULU N700

Notes:

Blackhawk T465 from a young female. This Blackhawk Q857 son is very soft & easy doing with great depth to his barrel. At scanning he had the equal highest IMF measurement in his mob. His data has low birth weight and he rates highly for his IMF, fertility, milk & fats data evaluations. Grand dam Lulu N700 is proving to be a top breeder with her two sons selling to average \$24k. Note he has a small spot of white near his pizzle & in front of testicles.

MID MAY 2024 TRANSTASMAN ANGUS CATTLE EVALUATION

CED	CEM	GL	BW	200d	400d	600d	Mcw	Milk	SS	CWT	EMA	Rib	Rump	RBY	IMF	SELECTION INDEXES			
+2.8	+3.4	-2.8	+2.9	+57.0	+93.0	+129.0	+84.0	+35.0	+4.0	+60.0	+5.7	+3.1	+4.1	-1.3	+4.1	ABI	Dom.	Grain	Grass
65%	55%	82%	81%	83%	81%	81%	78%	74%	79%	70%	70%	69%	71%	60%	75%	\$251	\$188	\$348	\$241



Purchaser: \$

LOT 135

PEAKES BOWEN CHISUM T457 SV

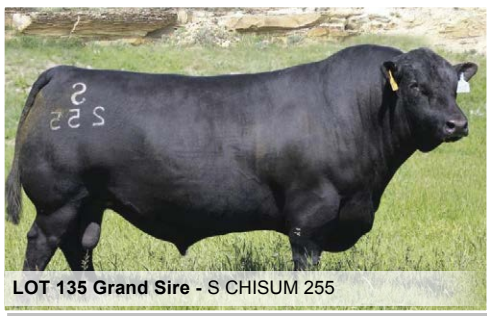
HBR

Born: 10/08/2022

AMF,CAF,DDF,NHF,DWF,MAF,MHF,OH
F,OSF,RGF

Tattoo-Brand: T457

EVT22T457



LOT 135 Grand Sire - S CHISUM 255

S CHISUM 255
SIRE: PREMIER CHISUM R35
 PREMIER LOWAN J1
 PEAKES BOWEN TOTAL FOCUS M794
DAM: PEAKES BOWEN LEAH Q584
 PEAKES LEAH G63

Notes: Chisum T457 is deep bodied & very thick with super soft skin. Pedigree contains the top female lines of Lowan, Annie & Leah. Grand dam Leah G63 has been a consistent sound breeder with longevity & will calve again in spring. Note he has a white spot near his testicles.

STRUCTURAL ASSESSMENT					
CLAW SET FRONT	CLAW SET REAR	FRONT FEET ANGLE	REAR FEET ANGLE		
6	5	5	6		
REAR LEGS SIDE VIEW	REAR LEGS HIND VIEW	SCROTAL (cm)	TEMP.	SHEATH	
6	6	37	1	4	

MID MAY 2024 TRANSTASMAN ANGUS CATTLE EVALUATION

CED	CEM	GL	BW	200d	400d	600d	Mcw	Milk	SS	CWT	EMA	Rib	Rump	RBY	IMF	SELECTION INDEXES			
+0.2	+1.3	-7.4	+5.7	+52.0	+88.0	+121.0	+90.0	+15.0	+0.4	+72.0	+2.1	+0.5	+2.2	+0.6	-1.3	ABI	Dom.	Grain	Grass
61%	52%	80%	80%	81%	79%	80%	75%	71%	77%	67%	66%	66%	67%	57%	71%	\$174	\$145	\$220	\$158



Purchaser: \$

LOT 136 **PEAKES BOWEN CHISIM T436 SV** **HBR**
 Born: 23/08/2022 AMF,CAF,DDF,NHF,DWF,MAF,MHF,OH F,OSF,RGF Tattoo-Brand: T436 **EVT22T436**

STRUCTURAL ASSESSMENT									
CLAW SET FRONT	CLAW SET REAR	FRONT FEET ANGLE	REAR FEET ANGLE	REAR LEGS SIDE VIEW	REAR LEGS HINDVIEW	SCROTAL (cm)	TEMP.	SHEATH	
6	5	5	6	5	6	40	1	5	

Notes:

Pedigree offers an outcross with the first of our Chisum R24 sons selling this year. Chisum T436 is from a young female. Grand dam Alison G66 sons have sold to \$18K.

S CHISUM 255
SIRE: PREMIER CHISUM R24
 PREMIER LOWAN J1
 MURDEDUKE KURRAJONG K18
DAM: PEAKES BOWEN ALISON Q692
 PEAKES ALISON G66

MID MAY 2024 TRANSTASMAN ANGUS CATTLE EVALUATION

CED	CEM	GL	BW	200d	400d	600d	Mcw	Milk	SS	CWT	EMA	Rib	Rump	RBV	IMF	SELECTION INDEXES			
-1.5	+4.2	-4.8	+6.1	+53.0	+94.0	+127.0	+75.0	+29.0	+2.9	+74.0	+0.2	-0.8	-0.9	-0.4	+2.4	ABI	Dom.	Grain	Grass
63%	53%	81%	80%	82%	79%	80%	76%	72%	77%	68%	67%	67%	68%	58%	72%	\$196	\$155	\$259	\$180



Purchaser: \$

LOT 137 **PEAKES BOWEN QARARA T490 PV** **HBR**
 Born: 05/08/2022 AMF,CAF,DDF,NHF,DWF,MAF,MHF,OH F,OSF,RGF Tattoo-Brand: T490 **EVT22T490**



TE MANIA KIRBY K138
SIRE: TE MANIA QARARA Q514
 TE MANIA BARUNAH L537
 MURDEDUKE KURRAJONG K18
DAM: PEAKES BOWEN MONA R532
 PEAKES BOWEN MONA L594

Notes: Qarara T490 is very long with great mobility & a tight sheath. He rates very highly for his IMF & EMA with good growth, RBV & structural data evaluations. This year is the first of sons Qarara Q514 sons for sale, he is very sound & correct sire. We have continued to use him over successfully over our yearling heifers with his terrific calving ease credentials.

STRUCTURAL ASSESSMENT									
CLAW SET FRONT	CLAW SET REAR	FRONT FEET ANGLE	REAR FEET ANGLE	REAR LEGS SIDE VIEW	REAR LEGS HINDVIEW	SCROTAL (cm)	TEMP.	SHEATH	
6	5	5	6	6	4	40	1	5	

MID MAY 2024 TRANSTASMAN ANGUS CATTLE EVALUATION

CED	CEM	GL	BW	200d	400d	600d	Mcw	Milk	SS	CWT	EMA	Rib	Rump	RBV	IMF	SELECTION INDEXES			
-2.6	-4.4	-4.5	+6.2	+59.0	+96.0	+128.0	+114.0	+19.0	+2.6	+78.0	+13.1	-2.8	-3.5	+1.4	+3.7	ABI	Dom.	Grain	Grass
66%	56%	82%	81%	83%	81%	81%	77%	73%	79%	70%	70%	69%	70%	61%	74%	\$252	\$204	\$328	\$238



Purchaser: \$

LOT 138 **PEAKES BOWEN QOUNTDOWN T698 PV** **HBR**
 Born: 11/08/2022 AMF,CAF,DDF,NHF,DWF,MAF,MHF,OH F,OSF,RGF Tattoo-Brand: T698 **EVT22T698**

STRUCTURAL ASSESSMENT									
CLAW SET FRONT	CLAW SET REAR	FRONT FEET ANGLE	REAR FEET ANGLE	REAR LEGS SIDE VIEW	REAR LEGS HINDVIEW	SCROTAL (cm)	TEMP.	SHEATH	
6	5	5	6	6	5	41	1	4	

Notes:

Qountdown T698 has loads of volume with fantastic depth to his barrel. His data excels in IMF, carcass & growth weight with very high data evaluations for his fertility & structure. The first sons of Q1290 sold as yearling bulls at our 2023 Bowen bull sale. Note he has a small white spot in front of his testicles.

TE MANIA KIRBY K138
SIRE: TE MANIA QOUNTDOWN Q1290
 TE MANIA BARUNAH J513
 PATHFINDER GENESIS G357
DAM: PEAKES BOWEN ABIGAIL P606
 PEAKES ABIGAIL K554

MID MAY 2024 TRANSTASMAN ANGUS CATTLE EVALUATION

CED	CEM	GL	BW	200d	400d	600d	Mcw	Milk	SS	CWT	EMA	Rib	Rump	RBV	IMF	SELECTION INDEXES			
+3.0	+3.5	-5.4	+6.5	+62.0	+101.0	+136.0	+135.0	+13.0	+3.7	+83.0	+3.4	-0.6	-0.9	-0.8	+3.7	ABI	Dom.	Grain	Grass
66%	58%	82%	82%	83%	81%	82%	79%	75%	79%	72%	71%	70%	72%	62%	75%	\$235	\$194	\$301	\$224



Purchaser: \$

LOT 139 **PEAKES BOWEN QARARA T443 SV** **HBR**
 Born: 26/07/2022 AMF,CAF,DDF,NHF,DWF,MAF,MHF,OH F,OSF,RGF Tattoo-Brand: T443 **EVT22T443**

STRUCTURAL ASSESSMENT									
CLAW SET FRONT	CLAW SET REAR	FRONT FEET ANGLE	REAR FEET ANGLE	REAR LEGS SIDE VIEW	REAR LEGS HINDVIEW	SCROTAL (cm)	TEMP.	SHEATH	
6	5	6	6	6	4	42	1	5	

Notes:

Qarara T443 has fantastic body length. His data excels with a very low birth weight & shorter gestation. Rating highly for his IMF, fertility & fats data evaluations. At scanning he had the equal highest IMF measurement in his mob. He is from a young female, grand dam Lowan E334 was purchased at the Vermont dispersal, her sons have sold to a top of \$26K.

TE MANIA KIRBY K138
SIRE: TE MANIA QARARA Q514
 TE MANIA BARUNAH L537
 PEAKES BOWEN TOTAL FOCUS M794
DAM: PEAKES BOWEN LOWAN Q745
 VERMONT LOWAN E334

MID MAY 2024 TRANSTASMAN ANGUS CATTLE EVALUATION

CED	CEM	GL	BW	200d	400d	600d	Mcw	Milk	SS	CWT	EMA	Rib	Rump	RBY	IMF	SELECTION INDEXES			
+1.6	+5.9	-4.5	+2.0	+47.0	+77.0	+90.0	+50.0	+15.0	+3.4	+70.0	+3.1	+1.6	+1.9	-0.4	+4.2	ABI	Dom.	Grain	Grass
64%	53%	82%	81%	83%	80%	81%	77%	72%	79%	69%	69%	68%	70%	60%	73%	\$240	\$203	\$319	\$224



Purchaser: \$

LOT 140 **PEAKES BOWEN CHISIM T448 SV** **HBR**
 Born: 22/08/2022 AMF,CAF,DDF,NHF,DWF,MAF,MHF,OH F,OSF,RGF Tattoo-Brand: T448 **EVT22T448**

STRUCTURAL ASSESSMENT									
CLAW SET FRONT	CLAW SET REAR	FRONT FEET ANGLE	REAR FEET ANGLE	REAR LEGS SIDE VIEW	REAR LEGS HINDVIEW	SCROTAL (cm)	TEMP.	SHEATH	
6	5	6	6	6	6	38	1	4	

Notes:

Chisum T448 is long bodied & smooth fronted, he rates highly for his fats & EMA data evaluations. His dam is a young female, grand dam Enna K642 sons have sold to \$28k. We purchased his sire Chisum R24 & full ET brother Chisum R35 as calves at the Premier dispersal & used them over our first calver heifers as yearlings.

S CHISUM 255
SIRE: PREMIER CHISUM R24
 PREMIER LOWAN J1
 PEAKES REALITY K695
DAM: PEAKES BOWEN ENNA Q675
 PEAKES ENNA K642

MID MAY 2024 TRANSTASMAN ANGUS CATTLE EVALUATION

CED	CEM	GL	BW	200d	400d	600d	Mcw	Milk	SS	CWT	EMA	Rib	Rump	RBY	IMF	SELECTION INDEXES			
+2.5	+4.3	-4.2	+5.3	+43.0	+77.0	+98.0	+71.0	+21.0	+1.4	+55.0	+7.9	+3.0	+2.8	+0.7	+0.8	ABI	Dom.	Grain	Grass
62%	52%	81%	80%	81%	79%	80%	76%	72%	77%	67%	67%	66%	68%	57%	72%	\$202	\$171	\$259	\$185



Purchaser: \$

LOT 141 **PEAKES BOWEN REGAL FOCUS T703 SV** **HBR**
 Born: 12/08/2022 AMF,CAF,DDF,NHF,DWF,MAF,MHF,OH F,OSF,RGF Tattoo-Brand: T703 **EVT22T703**



LOT 141 Sire - PEAKES BOWEN REGAL FOCUS P746

TUWHARETOA REGENT D145
SIRE: PEAKES BOWEN REGAL FOCUS P746
 PEAKES LOWAN K685
 MATAURI REALITY 839 NZ
DAM: PEAKES BOWEN ALISON M604
 PEAKES ALISON J603

Notes: Regal Focus T703 has a terrific temperament & will breed progeny with superior carcass attributes. He is sired by the powerful Regal Focus P746, the first of his sons sold at Bowen bull sale last year to average \$17k selling to a top of \$24k. We retained this sire for his calving ease & high marbling credentials.

STRUCTURAL ASSESSMENT									
CLAW SET FRONT	CLAW SET REAR	FRONT FEET ANGLE	REAR FEET ANGLE	REAR LEGS SIDE VIEW	REAR LEGS HINDVIEW	SCROTAL (cm)	TEMP.	SHEATH	
6	5	5	6	5	4	42	1	4	

MID MAY 2024 TRANSTASMAN ANGUS CATTLE EVALUATION

CED	CEM	GL	BW	200d	400d	600d	Mcw	Milk	SS	CWT	EMA	Rib	Rump	RBY	IMF	SELECTION INDEXES			
+5.7	+6.2	-2.9	+4.1	+49.0	+84.0	+114.0	+121.0	+21.0	+2.3	+69.0	+2.4	-1.2	-0.8	0.0	+2.8	ABI	Dom.	Grain	Grass
66%	58%	82%	81%	83%	81%	82%	78%	74%	79%	70%	69%	69%	70%	61%	74%	\$173	\$138	\$231	\$156



Purchaser: \$

LOT 142 **PEAKES BOWEN CHISIM T425^{SV}** **HBR**
 Born: 19/08/2022 AMF,CAF,DDF,NHF,DWF,MAF,MHF,OH F,OSF,RGF Tattoo-Brand: T425 **EVT22T425**



LOT 142 Grand Sire - S CHISUM 255

S CHISUM 255
SIRE: PREMIER CHISUM R24
 PREMIER LOWAN J1
 PEAKES LAD K638
DAM: PEAKES BOWEN BUTTONS Q773
 PEAKES BUTTON F21

Notes: Chisum T425 is a very sound well put together sire. His pedigree offers an outcross with the first of our Chisum R24 sons selling this year. This son has a moderate birth weight rating weighing 37kg at birth and rates well for his fats & IMF evaluations. Maternal grand dam Buttons F21 had terrific longevity, with sons selling to \$22K.

STRUCTURAL ASSESSMENT					
CLAW SET FRONT	CLAW SET REAR	FRONT FEET ANGLE	REAR FEET ANGLE		
6	5	5	6		
REAR LEGS SIDE VIEW	REAR LEGS HIND VIEW	SCROTAL (cm)	TEMP.	SHEATH	
5	5	38	1	5	

MID MAY 2024 TRANSTASMAN ANGUS CATTLE EVALUATION

CED	CEM	GL	BW	200d	400d	600d	Mcw	Milk	SS	CWT	EMA	Rib	Rump	RBY	IMF	SELECTION INDEXES			
+6.4	+2.5	-2.0	+3.9	+45.0	+72.0	+83.0	+42.0	+20.0	+1.5	+57.0	+8.0	+1.4	+0.5	+0.3	+2.8	ABI	Dom.	Grain	Grass
61%	51%	80%	79%	81%	78%	79%	75%	71%	75%	66%	65%	66%	67%	57%	70%	\$226	\$190	\$303	\$204



Purchaser: \$

LOT 143 **PEAKES BOWEN CHISUM T453^{SV}** **HBR**
 Born: 10/08/2022 AMF,CAF,DDF,NHF,DWF,MAF,MHF,OH F,OSF,RGF Tattoo-Brand: T453 **EVT22T453**

STRUCTURAL ASSESSMENT									
CLAW SET FRONT	CLAW SET REAR	FRONT FEET ANGLE	REAR FEET ANGLE	REAR LEGS SIDE VIEW	REAR LEGS HIND VIEW	SCROTAL (cm)	TEMP.	SHEATH	
6	5	5	6	5	6	40	1	5	

Notes:

Chisum T453 was the third heaviest in his mob at weaning. His data evaluations rate very well for his calving ease with very short gestation & a moderate birth weight rating. He has high EMA, fats & RBV data ratings. Pedigree offers an outcross with the first of our Chisum R24 sons selling this year.

S CHISUM 255
SIRE: PREMIER CHISUM R24
 PREMIER LOWAN J1
 PEAKES LAD K638
DAM: PEAKES BOWEN JESTRESS Q601
 PEAKES JESTRESS G148

MID MAY 2024 TRANSTASMAN ANGUS CATTLE EVALUATION

CED	CEM	GL	BW	200d	400d	600d	Mcw	Milk	SS	CWT	EMA	Rib	Rump	RBY	IMF	SELECTION INDEXES			
+5.3	+8.5	-7.9	+3.5	+48.0	+73.0	+92.0	+58.0	+23.0	+1.9	+63.0	+9.4	+1.0	+0.9	+1.0	-0.2	ABI	Dom.	Grain	Grass
61%	51%	80%	79%	81%	78%	79%	75%	71%	76%	66%	65%	65%	66%	57%	70%	\$208	\$175	\$267	\$186



Purchaser: \$

LOT 144 **PEAKES BOWEN QARARA T757^{SV}** **HBR**
 Born: 26/07/2022 AMF,CAF,DDF,NHF,DWF,MAF,MHF,OH F,OSF,RGF Tattoo-Brand: T757 **EVT22T757**



LOT 144 Sire - TE MANIA QARARA Q514

TE MANIA KIRBY K138
SIRE: TE MANIA QARARA Q514
 TE MANIA BARUNAH L537
 KANSAS FATHOM F167
DAM: PEAKES BOWEN GRIDMAKER L771
 LAWSONS GRIDMAKER Y492

Notes: Qarara T757 has shorter gestation & moderate birth weight data, weighing 36kg at birth. He rates highly for his IMF & RBV evaluations. His three maternal brothers have sold to average \$11k. We have continued to use his sire Qarara Q514 successfully over our yearling heifers, he is an outstanding sound sire rating very highly within the breed for his marbling, fertility & calving ease traits.

STRUCTURAL ASSESSMENT					
CLAW SET FRONT	CLAW SET REAR	FRONT FEET ANGLE	REAR FEET ANGLE		
6	5	5	6		
REAR LEGS SIDE VIEW	REAR LEGS HIND VIEW	SCROTAL (cm)	TEMP.	SHEATH	
6	6	39	1	4	

MID MAY 2024 TRANSTASMAN ANGUS CATTLE EVALUATION

CED	CEM	GL	BW	200d	400d	600d	Mcw	Milk	SS	CWT	EMA	Rib	Rump	RBY	IMF	SELECTION INDEXES			
+1.7	+5.3	-6.8	+3.9	+47.0	+68.0	+93.0	+81.0	+22.0	+1.4	+49.0	+6.4	-5.4	-6.9	+1.2	+3.8	ABI	Dom.	Grain	Grass
64%	53%	82%	81%	82%	80%	81%	77%	72%	79%	69%	69%	68%	69%	61%	73%	\$197	\$156	\$257	\$178



Purchaser: \$

LOT 145	PEAKES BOWEN REGAL FOCUS T746 SV	HBR
Born: 12/08/2022	AMF,CAF,DDF,NHF,DWF,MAF,MHF,OH F,OSF,RGF	Tattoo-Brand: T746
EVT22T746		EVT22T746

STRUCTURAL ASSESSMENT										
CLAW SET FRONT	CLAW SET REAR	FRONT FEET ANGLE	REAR FEET ANGLE	REAR LEGS SIDE VIEW	REAR LEGS HINDVIEW	SCROTAL (cm)	TEMP.	SHEATH		
6	5	6	6	5	5	40	1	5		

Notes:

Regal Focus T746 has excellent calving ease credentials with his low birth weight data. He has very high fats & IMF data evaluations. A soft easy doing quality bull with a great temperament. His maternal brothers have sold to \$10k. The sons from Regal Focus P746 averaged \$17k in the 2023 Bowen bull sale. We retained this sire for his calving ease & high marbling credentials.

TUWHARETOA REGENT D145
SIRE: PEAKES BOWEN REGAL FOCUS P746
 PEAKES LOWAN K685

SILVEIRAS CONVERSION 8064
DAM: PEAKES LOWAN J710
 TE MANIA LOWAN Z461

MID MAY 2024 TRANSTASMAN ANGUS CATTLE EVALUATION

CED	CEM	GL	BW	200d	400d	600d	Mcw	Milk	SS	CWT	EMA	Rib	Rump	RBY	IMF	SELECTION INDEXES			
+6.2	0.0	-4.5	+1.8	+30.0	+56.0	+70.0	+46.0	+21.0	+3.0	+40.0	+5.9	+1.9	+3.5	-0.2	+3.9	ABI	Dom.	Grain	Grass
65%	58%	82%	81%	83%	81%	81%	78%	74%	79%	71%	70%	70%	71%	62%	74%	\$189	\$152	\$249	\$174



Purchaser: \$

LOT 146	PEAKES BOWEN REALITY T682 SV	HBR
Born: 16/08/2022	AMF,CAF,DDF,NHF,DWF,MAF,MHF,OH F,OSF,RGC	Tattoo-Brand: T682
EVT22T682		EVT22T682

STRUCTURAL ASSESSMENT										
CLAW SET FRONT	CLAW SET REAR	FRONT FEET ANGLE	REAR FEET ANGLE	REAR LEGS SIDE VIEW	REAR LEGS HINDVIEW	SCROTAL (cm)	TEMP.	SHEATH		
6	5	5	6	5	6	40	1	4		

Notes:

Reality T682 has cracking data set for high growth, carcass weight, EMA & RBY evaluations. His structural data is rated in the top 8% or better within the breed. Sire Regent P814 sons sold to a top of \$20k & averaged \$12,500 in 2023 Bowen bull sale.

PEAKES REALITY K697
SIRE: PEAKES BOWEN REALITY P841
 PEAKES BOWEN ELINE L640

PEAKES LAD K638
DAM: PEAKES BOWEN LULU N633
 PEAKES LULU J574

MID MAY 2024 TRANSTASMAN ANGUS CATTLE EVALUATION

CED	CEM	GL	BW	200d	400d	600d	Mcw	Milk	SS	CWT	EMA	Rib	Rump	RBY	IMF	SELECTION INDEXES			
-6.4	-27.5	-2.2	+8.4	+65.0	+110.0	+145.0	+138.0	+9.0	+2.8	+90.0	+10.5	-1.1	-2.2	+1.3	+0.6	ABI	Dom.	Grain	Grass
65%	54%	82%	81%	83%	80%	81%	77%	73%	79%	70%	69%	69%	70%	60%	74%	\$162	\$129	\$221	\$142



Purchaser: \$



Successful debut for Bowen Pastoral Co

MAKING their debut in the Beef Spectacular Feedback Trial Bowen Pastoral Company, Barraba, shot up the leaderboard finishing sixth overall.

With a score of 779.5 points out of 1000, Bowen Pastoral also took out Rookie of the Year, a new award introduced in 2024 for the highest performing first-time entrant.

The team of five Angus steers finished seventh for feedlot performance with a score of 290 points out of 350.

One steer received the full 70 points for feedlot performance with an average daily gain of 2.56 kilograms per day.

In the carcass section, two carcasses were marbled score two and branded under Riverine Premium Beef and the remaining three were

marbled score one and made the grade for Teys Certified Premium Black Angus.

Stephen, Josh and Nick Peake are co-principles of Bowen Poll Herefords, Peakes Angus and Bowen Wagyu, collectively under Bowen Pastoral Company.

Stephen Peake said they wanted to get more of their animals tested and see how they were performing.

Mr Peake said the Angus herd was about 500 head, with only about 30 Angus steers to choose from for the trial.

"Most of the contemporary group they are from remain as bulls," he said.

"The male group of calves certainly weren't from the top end so it is a great thrill and shows the program has a fair bit of depth in the genetics."

Mr Peake said the results from the trial would help make future breeding decisions, as they as they knew the pedigree of each steer and were testing various sire lines.

He said the stud was run as a commercial herd and they covered a variety of markets for their clients.

"We keep them as commercial stock so they've got to perform under climatic and environmental conditions they're thrown under to get the performance," he said.

"They've got to tick all the fertility boxes, temperament, feet, do-ability."

He said performance in all conditions was key.

"If you get cattle with survivability then you can really focus on your carcass traits."

—ALEXANDRA BERNARD



Rookie of the Year in the 2024 Beef Spectacular Feedback Trial Stephen Peake from Bowen Pastoral Company. Picture by Ben Jaffrey.

